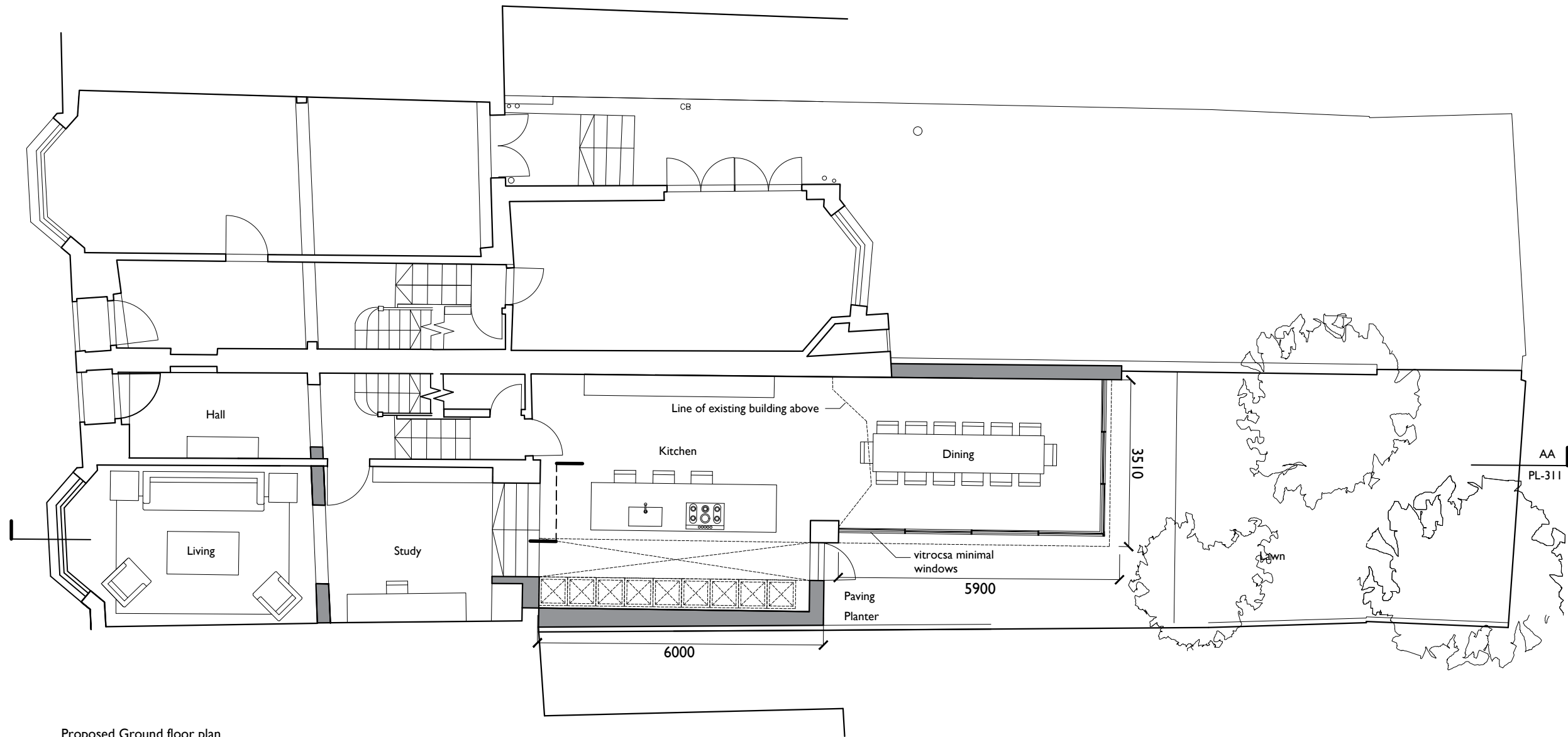


notes

Proposed



Proposed Ground floor plan

E	18/07/16	Permitted Developments
D	13/07/16	Permitted Developments
C	15/06/16	Permitted Developments
B	02/06/16	Planning
A	27/04/16	Planning
/	06/04/16	Planning
rev	date	amendment
project	25 Holmdale Road	

scale 1:100 @ A3

drawing Ground Floor Plan
Proposed
drawing no. PL - 112

Paul+O Architects Ltd
Unit 8, 73 Maygrove Road
NW6 2EG
t/f +44 020 7604 3818
www.paul-o-architects.com