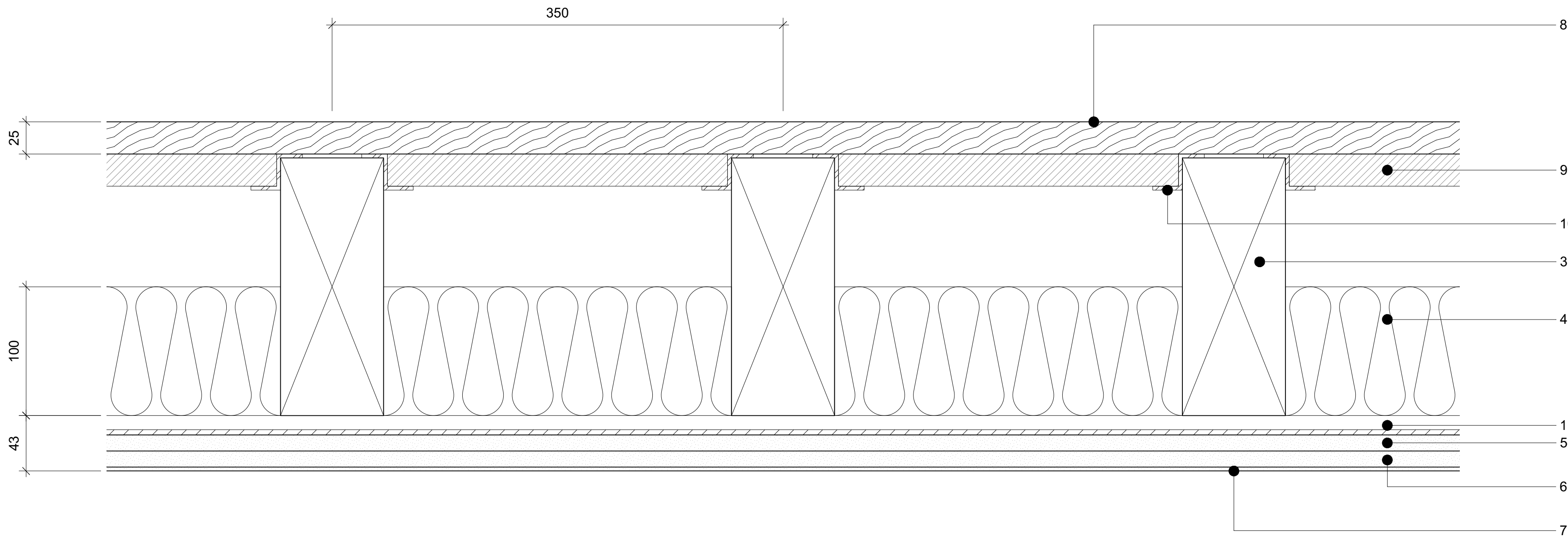


Type A1 floor build up: on 2F between Flat 2 / Flat 1

Airborne sound insulation  $R_w$  ( $R_w+C_{tr}$ ) = 46dB  
Impact sound insulation  $L_{nw}$  = 56dB

60 minutes fire resistance to BS

as per TRIM acoustics product literature



Type A2 floor build up: on 1F between Flat 1 / Shop

Airborne sound insulation  $R_w$  ( $R_w+C_{tr}$ ) = 46dB

60 minutes fire resistance to BS

as per TRIM acoustics product literature

SHOP

- Notes
- 25mm existing floorboard to be lifted to install insulation - K20.150A
  - 35mm flooring resilient layer - K20.150A
  - Existing timber joist 200mm high and width varying between 60-100mm
  - 100mm Mineral wool insulation - P10.240
  - 12.5mm Gypsum board (improved sound insulation) - K10.409
  - 12.5mm Gypsum board (improved fire protection) - K10.404
  - 3mm Gypsum plaster skim coat - M20.280
  - 25mm existing floorboard to be lifted to install insulation - K20.150B
  - Concealed acoustic board in between joists - K20.150B
  - Metal rails fixed on joist - K20.150B
  - 15mm resilient bars - K10.245

NOTES:

- DO NOT SCALE FROM THIS DRAWING.  
USE FIGURED DIMENSIONS ONLY.  
CONTRACTOR TO CHECK DIMENSIONS ON SITE  
PRIOR TO CONSTRUCTIONS AND NOTIFY ARCHITECT  
OF ANY DISCREPANCY.
- THIS DRAWING TO BE READ IN CONJUNCTION WITH  
ALL OTHER RELEVANT CONTRACT DRAWINGS,  
SPECIFICATIONS, AND SCHEDULES.

No.	ISSUE/REVISIONS	DATE
T1	TENDER	20/02/15
C0	FOR CONSTRUCTION	08/06/15
C1	General Updates	03/02/16
C2	General Updates	29/02/16

DRAWING: **Type A floor upgrade**

CLIENT: Connock & Lockie Ltd +  
Masanori Nagashima

PROJECT: 33/33a Lambs Conduit Street

STATUS: CONSTRUCTION

SCALE AT A1: - DRAWN: TO

SCALE AT A3: 1:5 CHECKED: TO

DRAWING NO: **321.60.100** REVISION: **C2**

**McDowell+Benedetti**

34-35 Hutton Garden, London EC1N 8DX  
email@McDowellBenedetti.com

t. 020 3475 7500  
f. 020 3475 7501