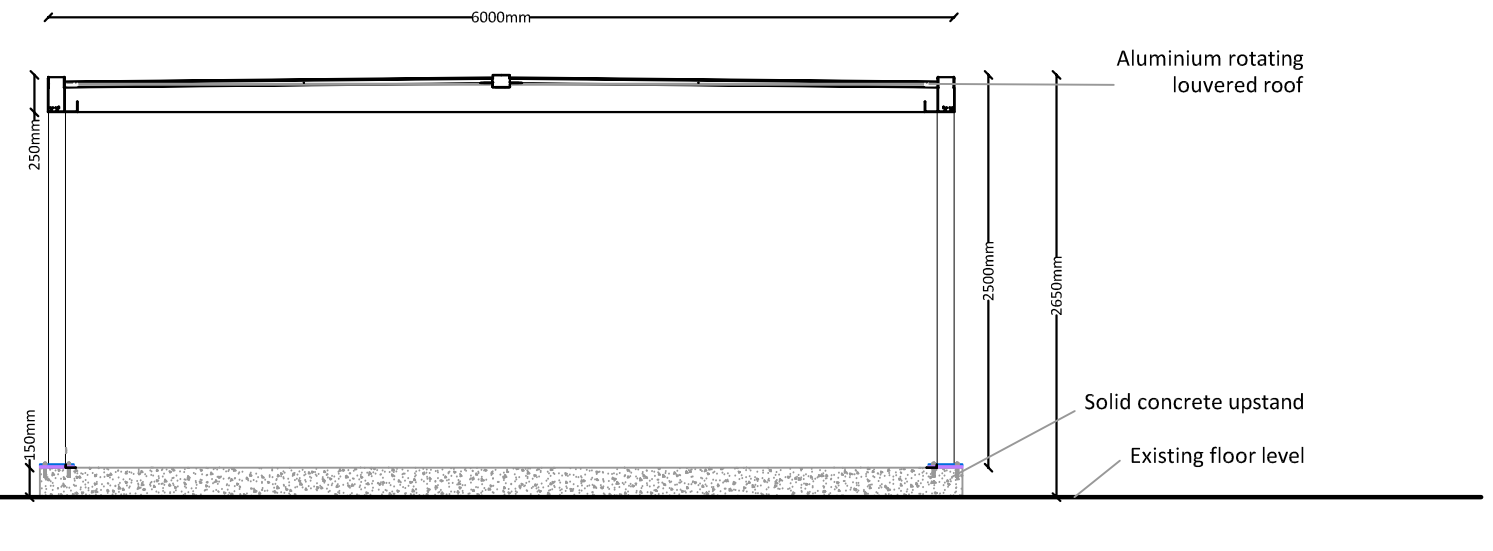
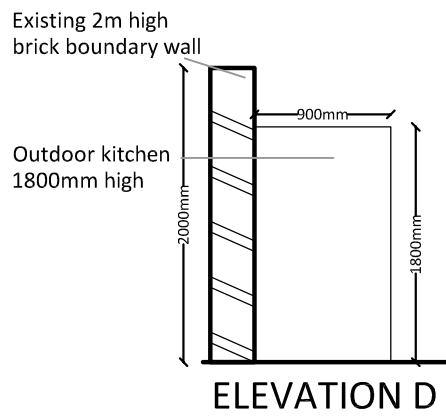
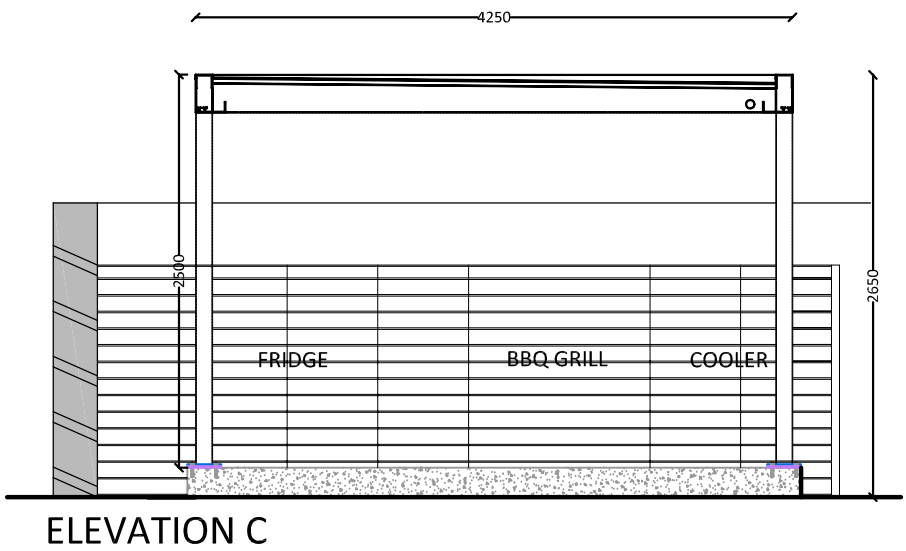


Umbis Gazebo automated solar shading device
 All louvres are fully automated
 2 x 2400 WATT heaters
 8 LED lights 6 WATT with dimming function
 rain sensor
 colour is grey
 Width 4250mm x Length 6000mm x Height 2600mm
 The structure will be mainly aluminium with two timber louvre walls.
 Including 4 supporting legs and integrated rain water drainage system.



PROPOSED GAZEBO

project Flats 1 & 2, 7 Strathray Gardens London NW3 4PA	drawing PLANNING		
	drawn JRS	checked RS	date 15.07.2016
client	scale 1:50	paper size A3	drawing no. 7905 / 13

MDC

METROPOLITAN
DEVELOPMENT
CONSULTANCY

66 Bickenhall Mansions
Bickenhall Street
London W1U 6BS
t: +44(0)207 486 6675
e: info@mdclondon.com
w: www.mdclondon.com