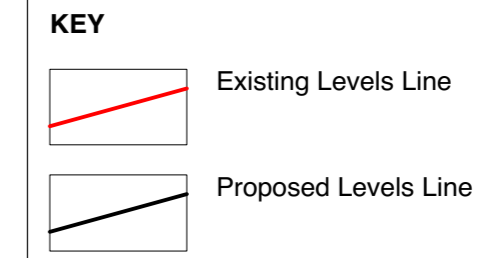




- NOTES**
1. This drawing is copyright of Camlins and may not be reproduced in whole or in part without the written permission of Camlins.
 2. Do not scale from this drawing.
 3. All dimensions in millimetres unless otherwise shown.
 4. All levels in metres above Ordinance Datum (mAOD) unless otherwise shown.
 5. All dimensions to be checked on site and any discrepancies reported to CA before pricing / work starts.
 6. Any ambiguities or discrepancies within this drawing or between this drawing and any other information given elsewhere must be reported to Camlins and the CA for clarification before pricing / work proceeds.
 7. All drawings to be read in conjunction with other Camlins drawings and specification and with relevant Engineer's and Architect's work packages as appropriate.
 8. All works carried out in accordance with the latest British Standards and appropriate codes of practice as a minimum.



LANDSCAPE BUILD-UP REQUIREMENTS

P2/P3 Dutch clay paver over external building slab
 70mm for surface material
 30-40mm mortar
 Minimum 100mm concrete base

Architectural and Structural information shown is indicative only. Contractor external designer to co-ordinate with current Architectural and Structural information.

Contractor design for Clay pavers to include bonding patterns, cuts etc.

Contractor design for Brickwork to include:

- Brick Type
- Bond
- Mortar
- Method of securing coping
- Weep holes

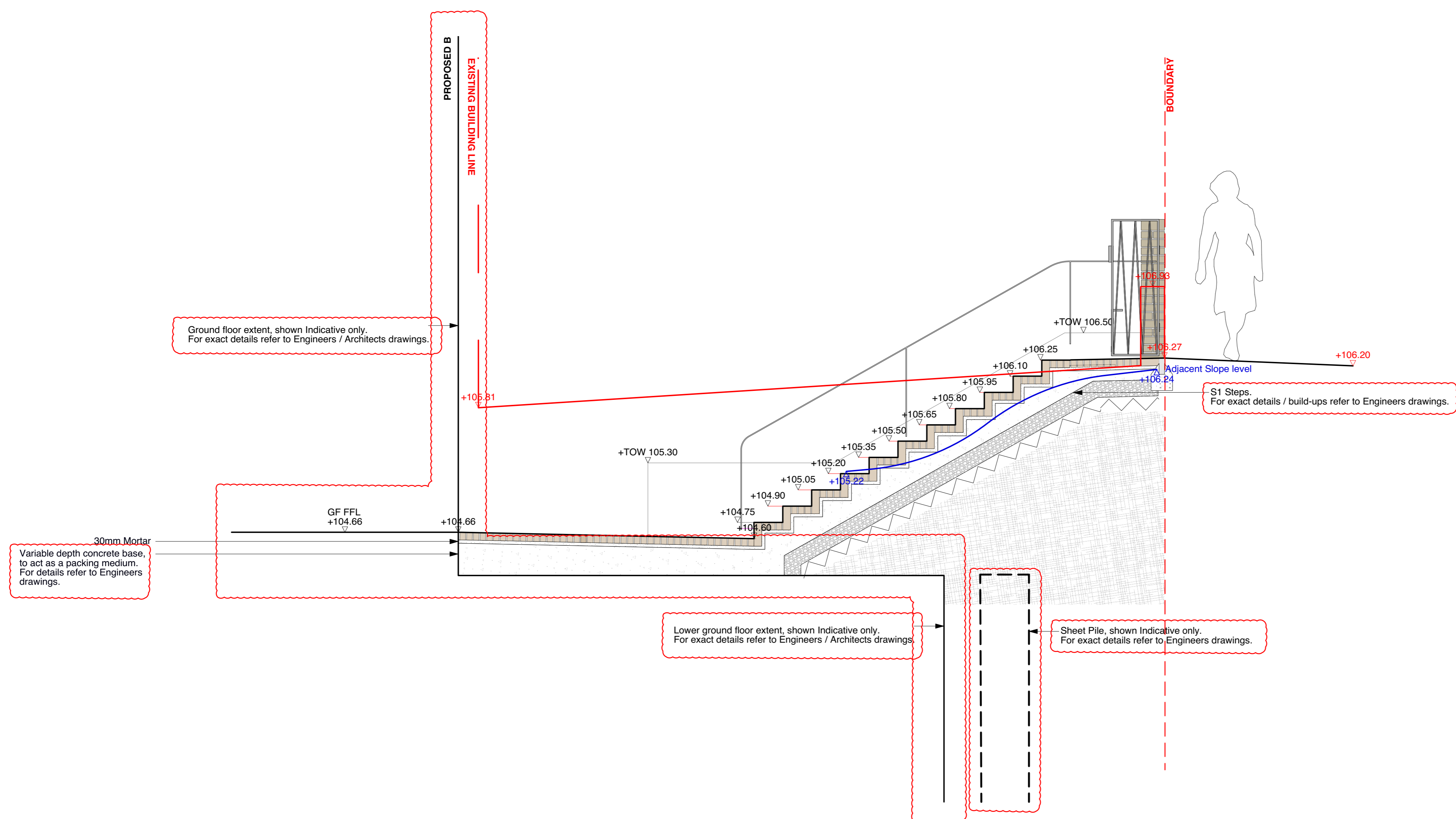
Contractor Design for Metalwork to include:

- Fabrication quality
- Finishes
- Fixings
- Hinges / All moving parts etc
- Gates to be lockable
- Fabrication drawings to be provided for comment
- To match architectural steel work

Works within the highway are shown as indicative only, all to be detailed by transport engineer agreed with LHA

Contractor design for steps to include any requirements for tactile surfacing, handrails etc if any are required.

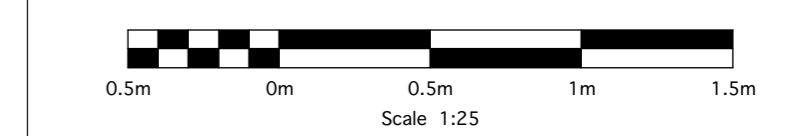
For exact details on foundations / Build-ups / Structural information etc please refer to Engineers and Architects details.



Section B - B'
Scale: 1:25 at A1

Revisions

Rev.	Date:	Description:	Revised by:	Checked by:
1	14/04/2016	Updated to match new architectural information Sheet pile location updated Note / Label Updates	LC	PSS



EMPLOYERS REQUIREMENTS

FITZJOHNS AVENUE
PEGASUS LIFE

Section B - B'

Drawing No.:	Revision:	Scale:	Date:
LL489-400-0103	1	1:25@A1	18.03.2016

Drawn by: LC
Checked by: PSS

Camlins

Landscape Architects, New Dolanog House, Severn Road, Welshpool, Powys, SY21 7AP
 Tel: 01938 554886 / studio@camlins.com / www.camlins.com