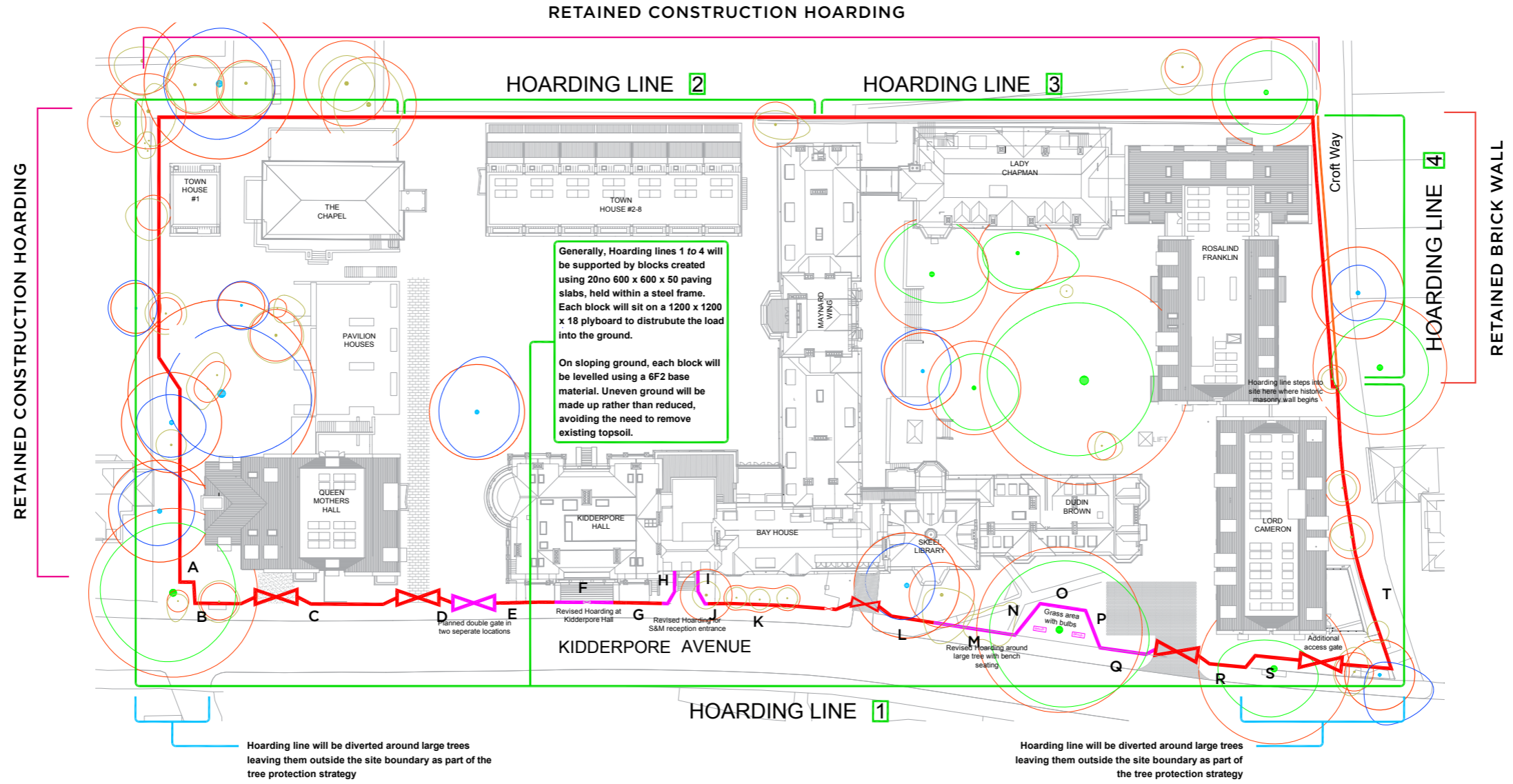
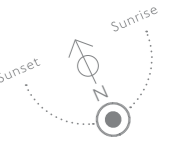


**MOUNT ANVIL**

**HAMPSTEAD MANOR PROJECT**

**HOARDING LAYOUT & DETAILS – PLANNING & ADVERT SUBMISSIONS**

Showing panel layout and placement of branding.

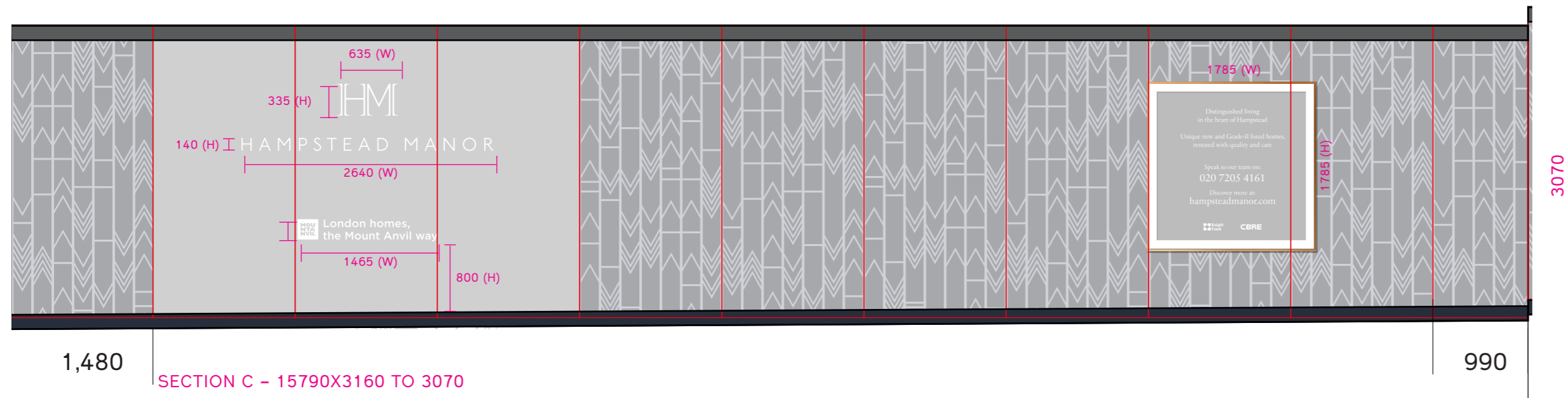
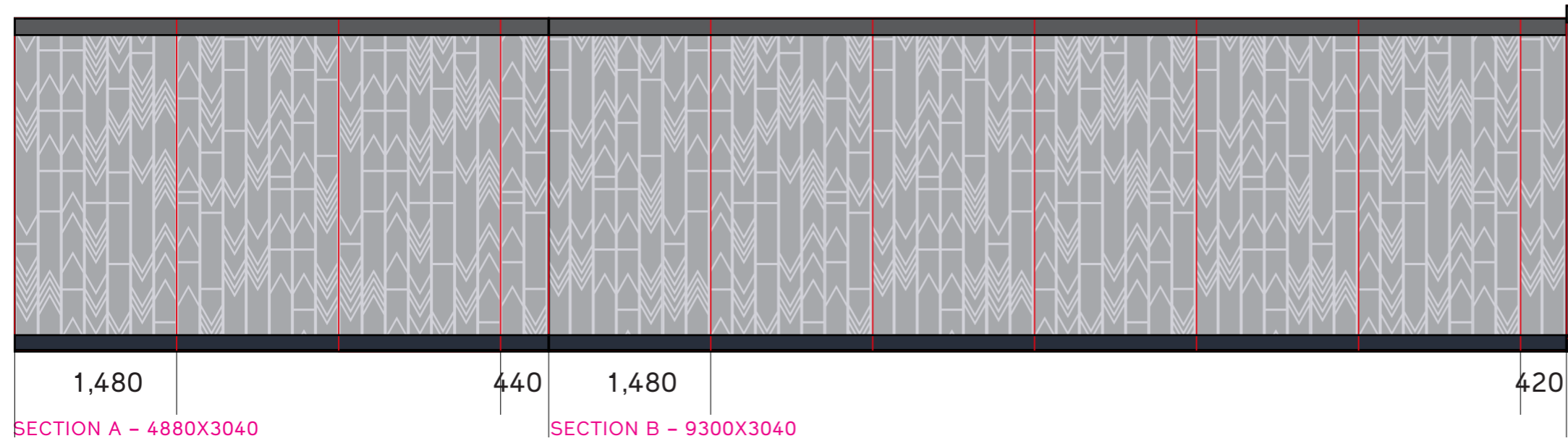


Hoarding line will be diverted around large trees leaving them outside the site boundary as part of the tree protection strategy

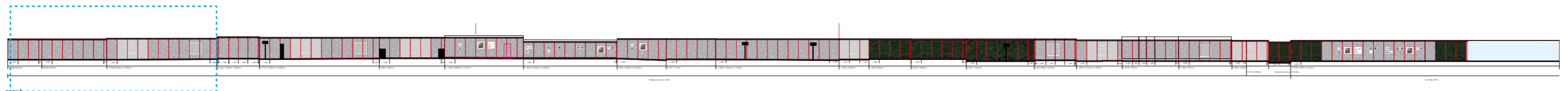
Hoarding line will be diverted around large trees leaving them outside the site boundary as part of the tree protection strategy

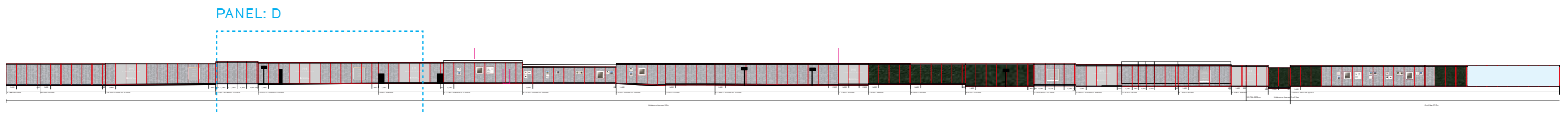
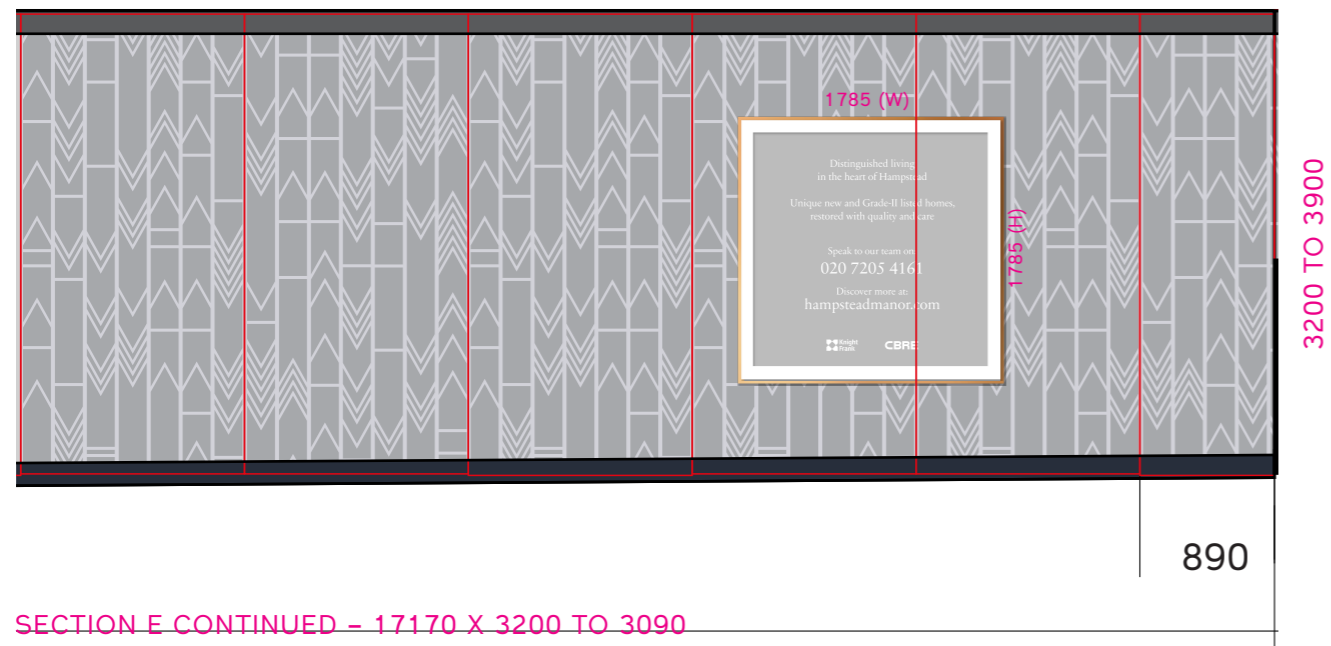
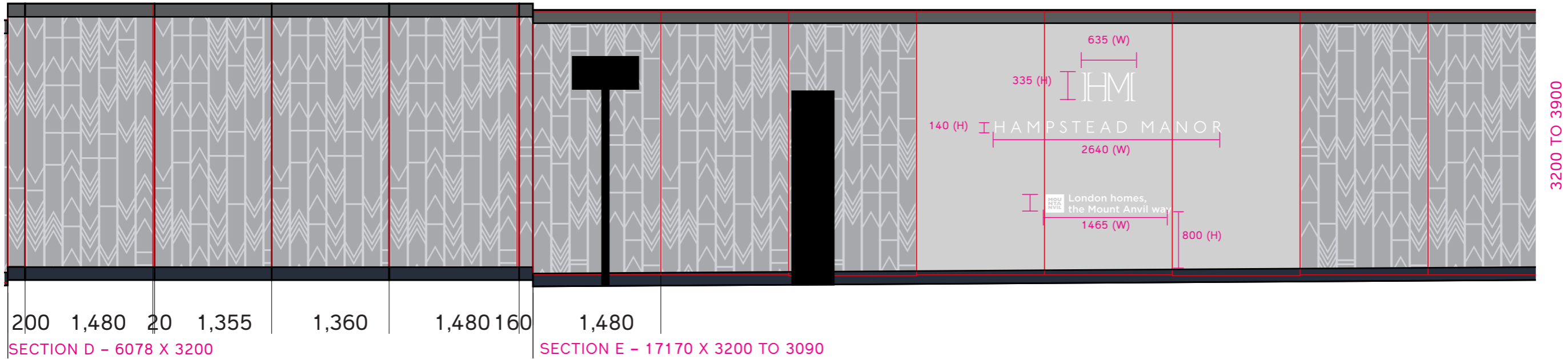
19.01.16 Rev C - Post hole support notes removed following Tree Officers comments  
 26.02.16 Rev D - Revised to add gate at LC & revise hoarding line to expose more trees and grass areas  
 24.03.16 Rev E - Revised Hoarding line to reflect S&M comments

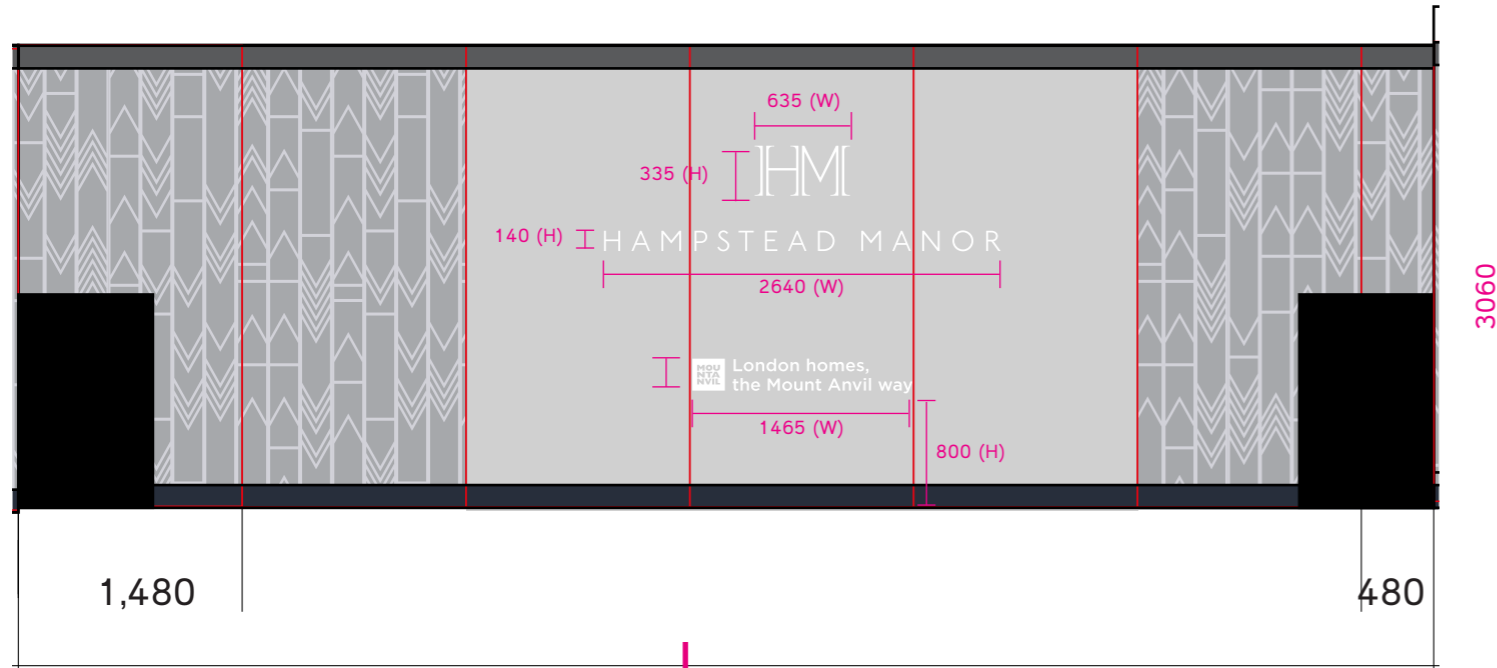
J.E.T.  
 09.09.15  
 rev- E



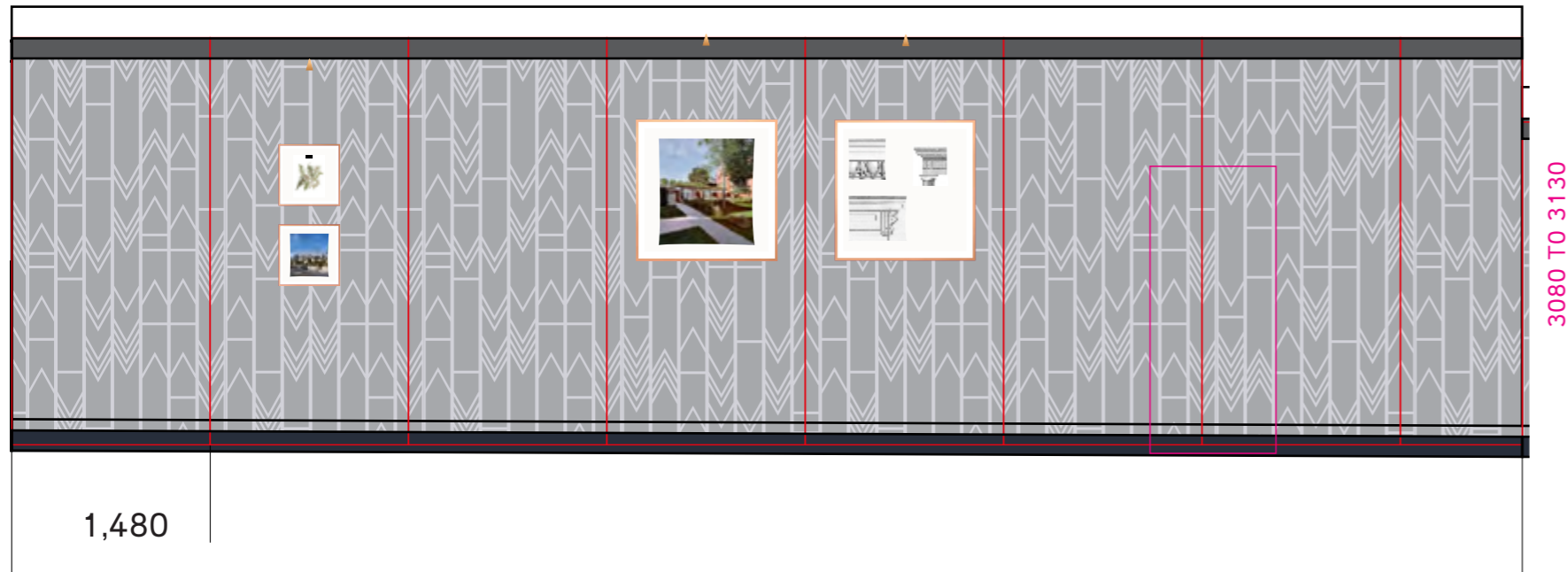
PANEL: A, B & C







SECTION F - 9360 X 3060



SECTION G - 11280 X 3080 TO 3130

PANEL: F & G

