

Which? HQ

Address
**2 Marylebone Road &
 1-9 Albany Street**



Client
 Which?
 2 Marylebone Road
 London, NW1 4DF
 Tel: +44 (0)20 7770 7000 Fax: +44 (0)20 7770 7600

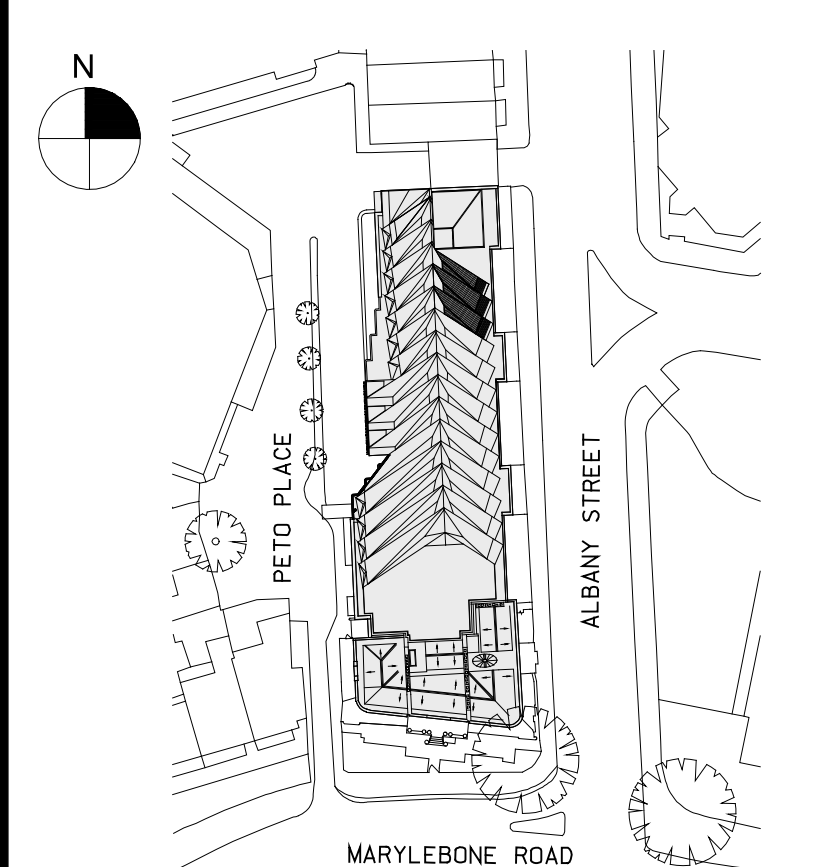
Architect
 Kohn Pedersen Fox Associates (International) PA
 Architects & Planning Consultants
 7a Langley Street
 London WC2H 9JA, United Kingdom
 Tel: +44 (0)20 31195300 Fax: +44 (0)20 74971175

— SITE BOUNDARY

0m 5m 10m 20m

04	S73 PLANNING	30.07.15
03	REVISED STAGE D	26.06.15
02	STAGE 1 TENDER	08.05.15
01	STAGE D ISSUE	24.04.15
00	PLANNING SUBMISSION	21.08.13
No.	Issue	Date

Key Plan



Date
 18.04.13

Scale
 1:500 @ A0

Project No.
 859

Drawn By

**SITE PLAN PROPOSED
 PLANNING PERMISSION**

A-011

