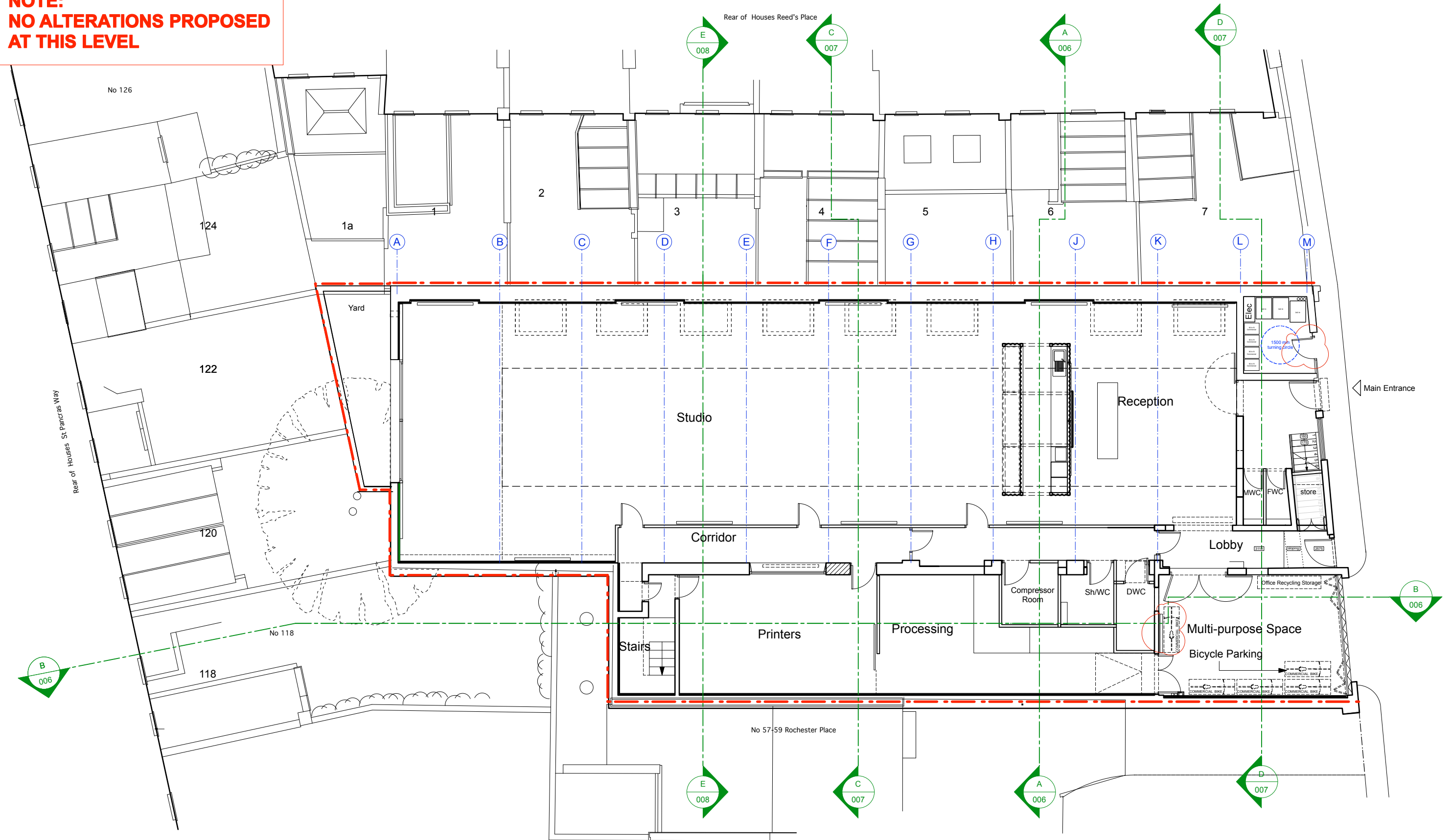


**NOTE:
NO ALTERATIONS PROPOSED
AT THIS LEVEL**



REV. D - 15.02.16 - Refuse door opening direction revised.
Bike layout revised
REV. C - 16.10.15 - Additional bicycle parking added
Rev B - Amendments to existing entrance hallway dimensions



Norton Ellis Architects Ltd
14 Baltic Street East
London EC1Y 0UJ
Tel: 020 7490 3142
Fax: 056 0209 3407
www.nortonellis.co.uk
mail@nortonellis.co.uk

These particulars do not constitute, nor constitute any part of, an offer or a contract. All statements contained in these particulars as to this property are made without the responsibility on the part of Norton Ellis Architects Ltd, or the Vendors or Lessors. None of the statements contained in these particulars as to this property are to be relied on as statements or representations of fact. All measurements are approximate and no responsibility is taken for any error, omission, or mis-statement and any intending purchaser or tenants must satisfy themselves by inspection or otherwise as to the correctness of each of the statements contained in these particulars/ plans.
Do not scale from this drawing. All dimensions to be checked on site and any discrepancy to be reported to the Architect prior to construction.
This drawing to be read in conjunction with all other drawings including those of other consultants.
Samples of all materials to be provided for comment/ approval prior to fabrication/construction.
© 2015 Norton Ellis Architects Ltd.

Proposed Ground Floor Plan

PURPOSE OF ISSUE
Preliminary
Planning
Tender
Construction

266-001
Rev: D
Date: 10.04.2015
Scale: 1:100 @ A2

norton ellis architects **nea**

61-63 Rochester Place, NW11 9JU

Proposed Ground Floor Plan

