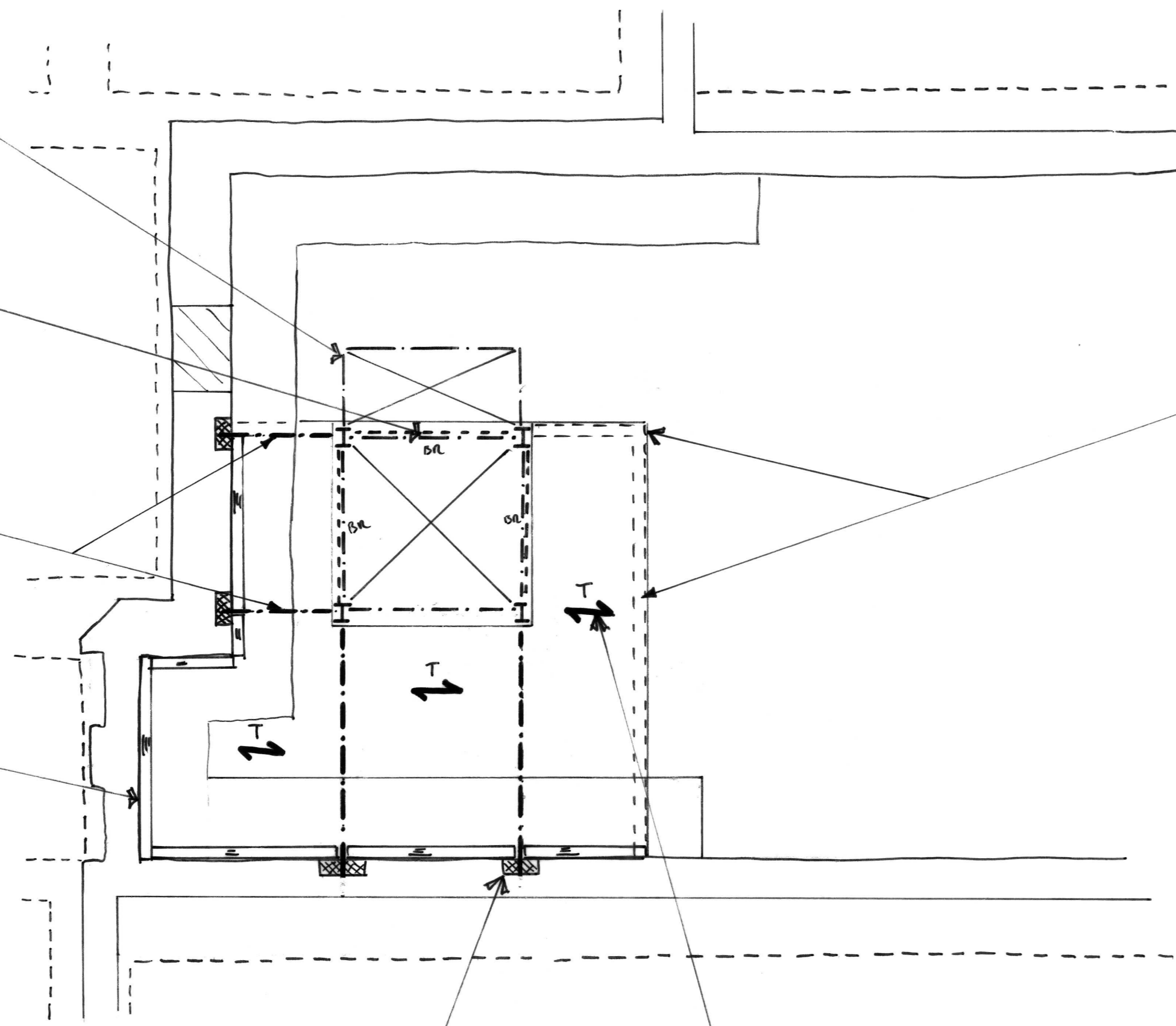


CANTILEVER STEEL BEAM TO SUPPORT SANDICE STAIRS, TO CANTILEVER FROM LIFT SHAFT.

NEW STEEL LIFT SHAFT TO BE BALCO ON 3 NO. SIDES AS SHOWN.

STEEL BEAMS SPANNING FROM LIFT SHAFT TO EXISTING MASONRY WALLS AT BELOW CORNICE LEVEL.

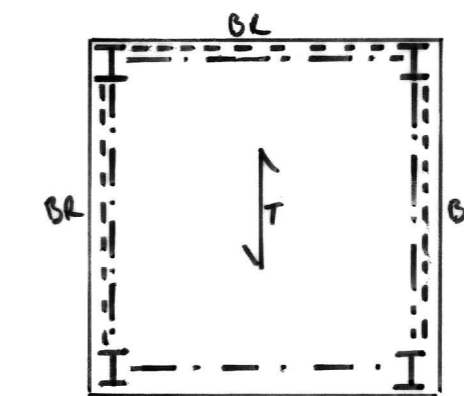
TIMBER WALL PLATE



LOADBEARING STUD WALL TO PICK UP EDGE OF ROOF.

CONCRETE PADSTONES

TIMBER ROOF TO COMPRISE JOISTS AND HANDED PLY LAYER WITH STEEL STRAPS CONNECTING TO STEEL BEAMS FOR STABILITY.



PART PLAN OF LIFT SHAFT ROOF

notes
1. THIS DRAWING SHOULD BE READ IN CONJUNCTION WITH ALL OTHER RELEVANT ARCHITECTS AND ENGINEERS DRAWINGS AND THE SPECIFICATION.

7.6.16 ISSUED FOR PLANNING LK

BRITISH MUSEUM
WHITE WING -
CRAWFORD STAIR

PROPOSED STRUCTURE
ROOF LEVEL PLAN

drawn LK checked FN
date MAY '16 scale (original - A1) 1:50

Alan Baxter

75 Cowcross Street London EC1M 6EL
tel 020 7250 1555
email aba@alanbaxter.co.uk
www.alanbaxter.co.uk

0699/454/70