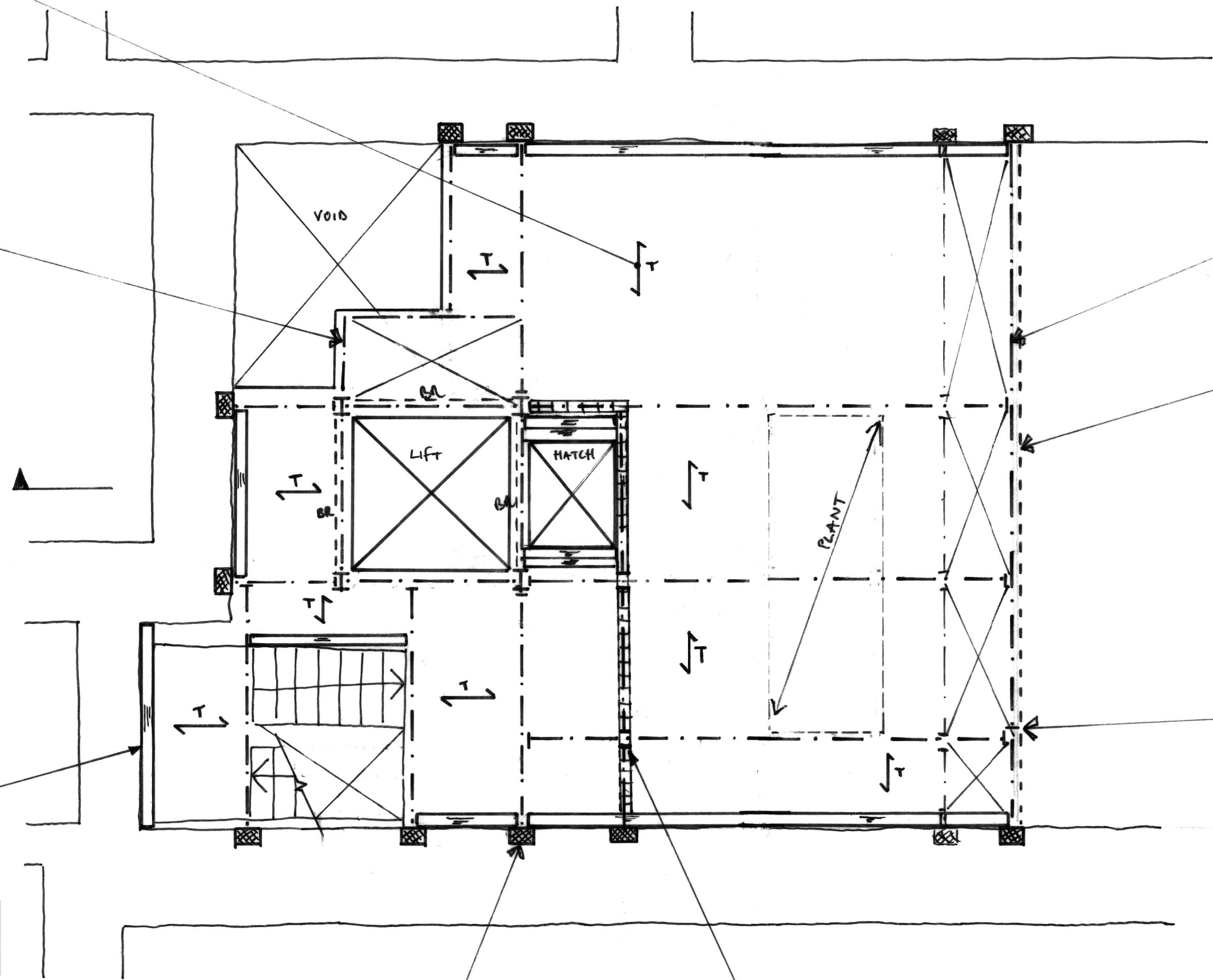


NEW JOISTED TIMBER
FLOOR WITH 18mm
PLY LAYER SCAWED
TO TOP AND STEEL
STRAPS CONNECTED
TO STEEL BEAMS FOR
LATERAL STABILITY

STEEL BEAM TO
CANTILEVER FROM
LIFT SHAFT TO
SUPPORT EDGE OF
STRUCTURE

TIMBER WALL PLATE
TO PICK UP TIMBER
DECK FORMING
HALF LANDING.



NEW STEEL BEAM TO SUPPORT
NEW FACADE

PROPRIETARY PRE-ASSEMBLED
FACADE SYSTEM TO FORM
ELEVATION TO ARCHITECT'S
SPECIFICATIONS

D-D
62

SPLICE IN NEW STEEL
BEAM.

CONCRETE
PADSTONES

STEEL BEAM SUPPORTING
LOAD BEARING STUD
WALL.

notes

1. THIS DRAWING IS TO BE READ IN CONJUNCTION
WITH ALL RELEVANT ARCHITECTS AND ENGINEERS
DRAWINGS AND THE SPECIFICATIONS.

7.6.16 ISSUED FOR PLANNING LK

job
**BRITISH MUSEUM
WHITE WING -
CRAWFORD STAIR**

title
**PROPOSED STRUCTURE
PLANT LEVEL PLAN**

drawn
LK
checked
fa
date
MAY '16
scale (original - A1)
1:50

Alan Baxter

75 Cowcross Street London EC1M 6EL
tel 020 7250 1555
email aba@alanbaxter.co.uk

www.alanbaxter.co.uk

diag. no.
0699/454/69
rev.
—