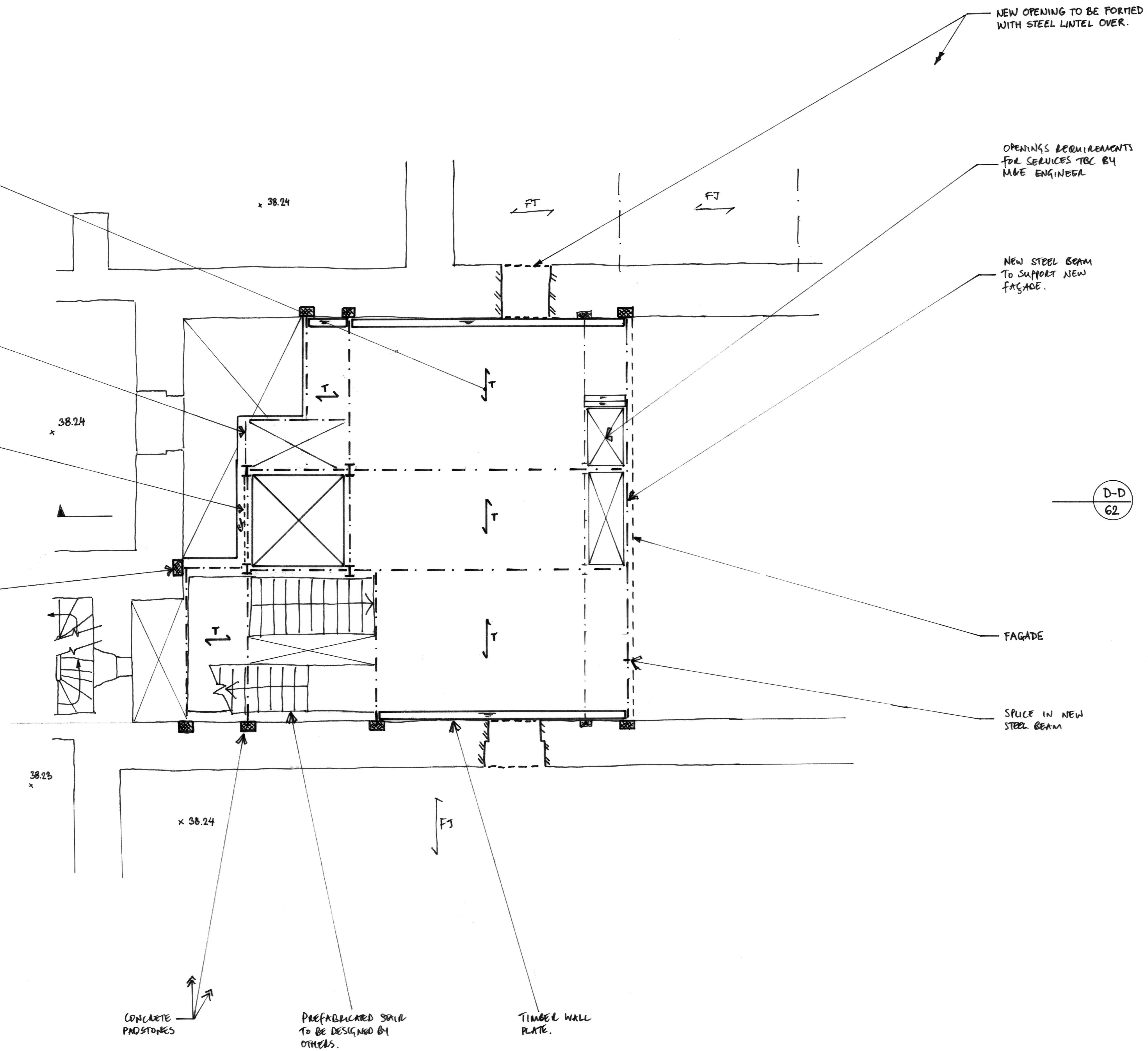


NEW JOISTED TIMBER FLOOR WITH 18mm PLY LAYER SCREWED TO TOP AND STEEL STRIPS CONNECTING TO STEEL BEAMS FOR LATERAL STABILITY.

STEEL BEAM TO CANTILEVER FROM LIFT SHAFT TO SUPPORT EDGE OF STRUCTURE

NEW STEEL LIFT SHAFT TO BE BALANCED ON 1 NO. SIDE AS SHOWN

NEW STEEL BEAM AT HALF LANDING LEVEL TO PICK UP HALF LANDING



NEW OPENING TO BE FORMED WITH STEEL LINTEL OVER.

OPENINGS REQUIREMENTS FOR SERVICES TO BE BY M&E ENGINEER

NEW STEEL BEAM TO SUPPORT NEW FACADE.

FACADE

SPICE IN NEW STEEL BEAM

D-D
62

CONCRETE PADSTONES

PREFABRICATED STAIR TO BE DESIGNED BY OTHERS.

TIMBER WALL PLATE.

NOTES
1. THIS DRAWING IS TO BE READ IN CONJUNCTION WITH ALL OTHER RELEVANT ARCHITECT'S AND ENGINEER'S DRAWINGS.

1.6.16 ISSUED FOR PLANNING LK

job
**BRITISH MUSEUM
WHITE WING -
CRAWFORD STAIR**

title
**PROPOSED STRUCTURE
LEVEL 6 PLAN**

drawn LK checked FN
date MAY '16 scale (original - A1) 1:50

Alan Baxter

75 Cowcross Street London EC1M 6EL
tel 020 7250 1555
email aba@alanbaxter.co.uk

www.alanbaxter.co.uk

drg. no. **0699/454/68** rev. -