

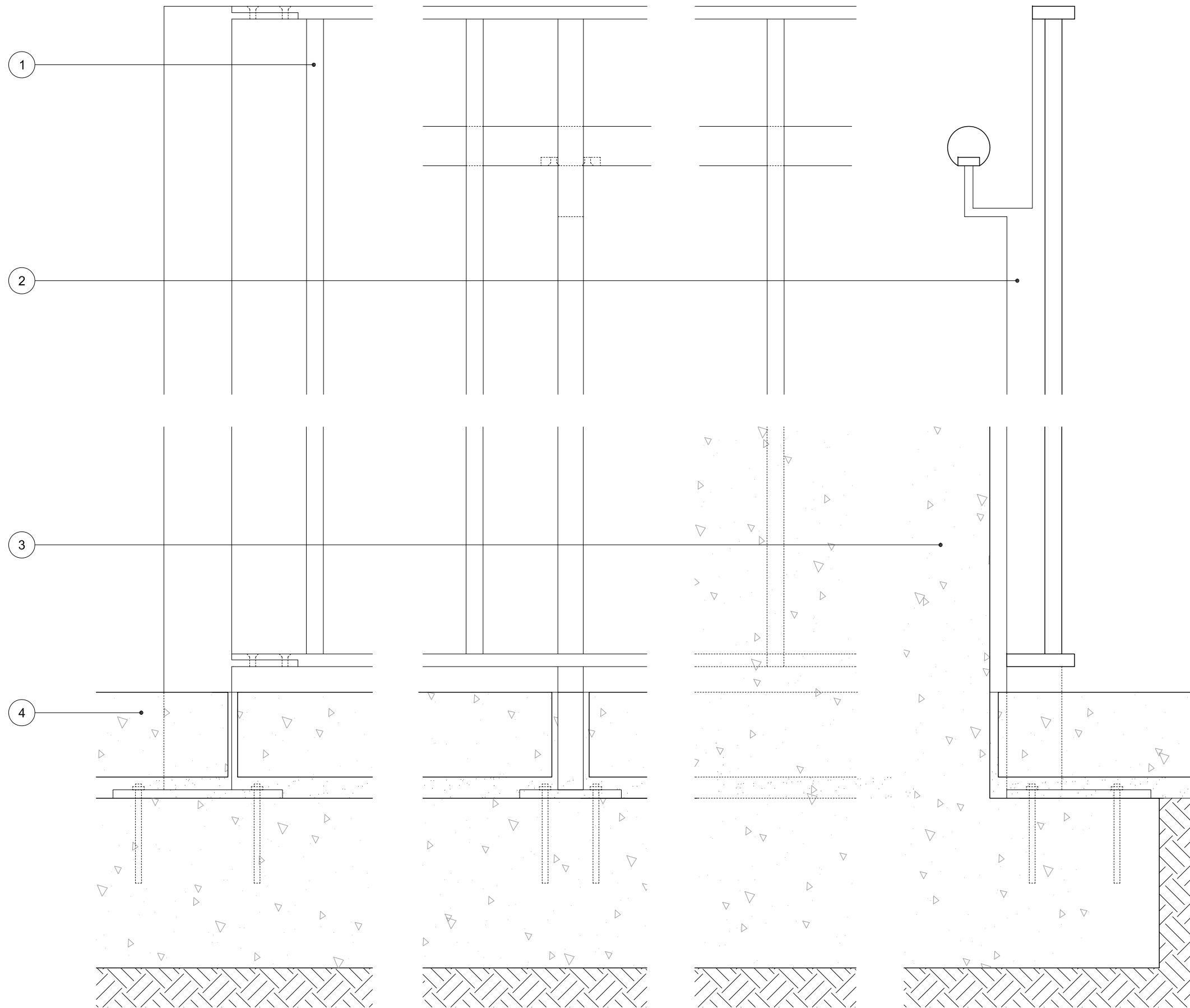
Do not scale from this drawing. Verify all dimensions on site. Drawing should be read in conjunction with information from all other design consultants and contractors. All drawings in digital format are for reference only, paper copies are available on request.

FOR PLANNING

© Maccreanor Lavington Architects

Materials Key

- 1 Polyester powder coated metal railing
- 2 Polyester powder coated metal railing handrail support
- 3 Insitu Concrete steps
- 4 Existing concrete paving reinstalled

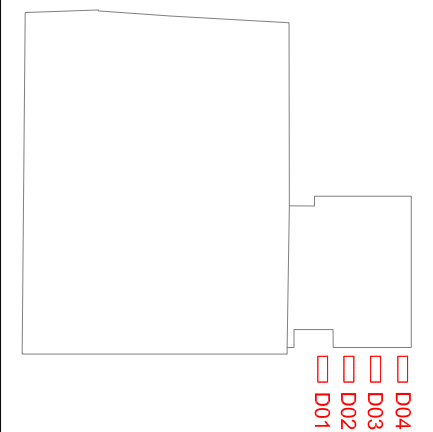


Detail 01 - Post Connection Elevation

Detail 02 - Handrail Support Elevation

Detail 03 - Rod Elevation

Detail 04 - Railing & Handrail Section



Issued for Planning Condition Discharge MH 25-04-16

Rev Details Drwn Date

Holy Trinity + St. Silas Primary School

Client: Holy Trinity + St. Silas Primary School

Title: Proposed External Details

Railing

Scale: 1:5 @ A3

Date: 25-04-2016

Drawn: MH

MLA / 369 / P / 352

MaccreanorLavington

3rd Floor
19-21 Nile Street
London N1 7LL

t +44(0)207 336 73 53
f +44(0)207 336 76 55
e uk@ml-architects.com