



Scoping Elevation East
1 : 100

Facade Type 1

- Brick type 3 SPEC F10/113
- Glazed Sawtooth Vent brick
- Brick type 1 SPEC F10/111
- Bat box with brick facings to match surrounding brickwork

Window frame colour = Schueco Anoline Colour C34

Facade Type 2

- Brick types 2a and 2b SPEC F10/112A and F10112B
- Air Brick 215 x 215

Window frame colour external = Schueco Anoline Colour C33
Window frame colour internal = Schueco Anoline Colour C34

- House sparrow box with brick facings to match surrounding brickwork
- Swallow box with brick facings to match surrounding brickwork
- Blue hatch denotes brick soffit

Movement joints

- 10mm
- 20mm

notes

The contractor is responsible for checking dimensions, tolerances and references. Any discrepancy to be verified with the Architect before proceeding with the works. Where an item is covered by drawings to different scales the larger scale drawing is to be worked to. Do not scale drawing. Figured dimensions to be worked to in all cases.

CDM Regulations 2015

ALL current drawings and specifications for the project must be read in conjunction with the Designer's Hazard and Environment Assessment Record.

GRID REFERENCE

SECTION REFERENCE

PLAN CALLOUT / DETAIL REFERENCE

DIMENSIONS:

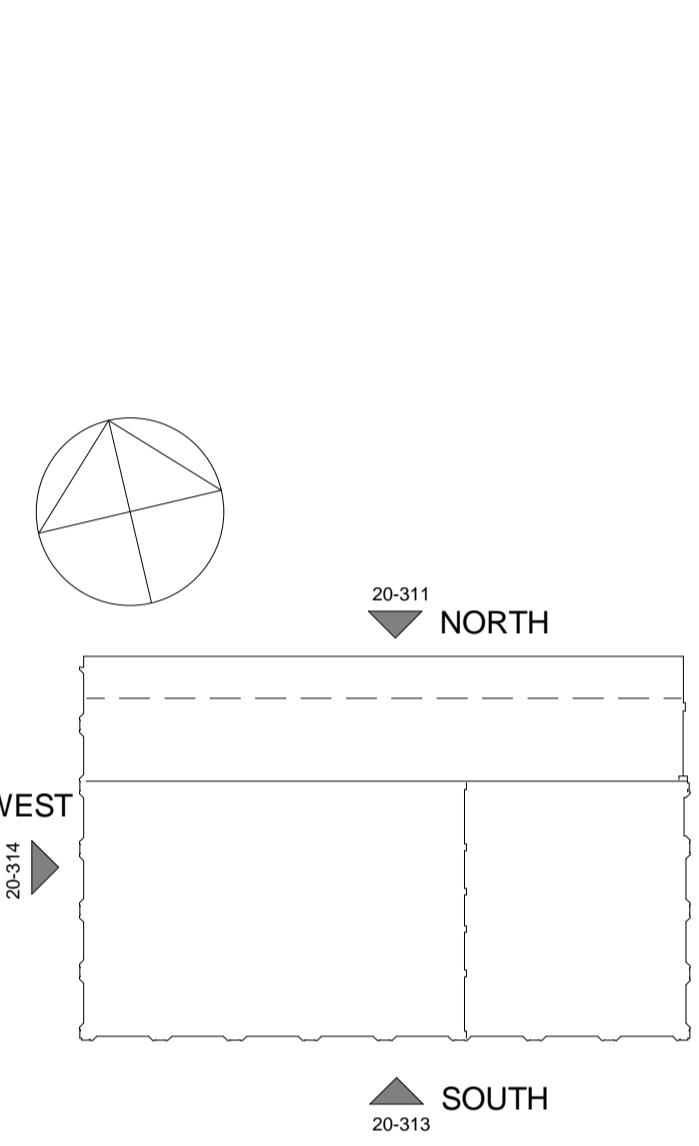
- Dimensions to finishes or face of brickwork.
- Dimensions are to Structure (face of Light gauge steel Frame, stud or concrete)

SPOT LEVELS:

- Plan
- Elevation
- Prefixes: SSU indicates structural slab level, FFL indicates top of notional 20mm floor finish

PREFABRICATED COMPONENT REFERENCING:

Type	Prefixes	Drawing Series	Refer to
B	B-Balcony type	21-700	Refer to Drawing Series
C	C-Cill type	32-500	Refer to Drawing Series
D	D-Internal door	31-700	Refer to Drawing Series
F	F-Pre-cast Frame	21-700	Refer to Drawing Series
PF	PF-PS/PD-Pre-cast	21-700	Refer to Drawing Series
Plinth/Cill		34-700	Refer to Drawing Series
R	R-Railing/Balustrade	31-700	Refer to Drawing Series
W	W-Ext Window/Door	31-700	Refer to Drawing Series
BT	BT-Bathroom	74-500	Refer to Drawing Series
KT	KT-Kitchen	73-500	Refer to Drawing Series



date	rev	revision/author/checker
24.06.2016	8	Issued for construction A/JH
20.05.2016	7	Issued for Status Assign IM A/JH
30.03.2016	6	Bird and bat boxes added A/JH A/JH
11.01.2016	5	Issued for Status Assign IM A/JH
09.12.2015	4	CP Amendments IM / A/JH
04.11.2015	3	Stage 4 General Revisions, Issue for Contractors Proposal. IM / MSB
26.10.2015	2	Stage 4 - General Revisions IM / MSB
25.09.2015	1	Stage 4 - Issued for comment DE MSB
18.09.2015	00	Stage 4 - Issued for Comment MB / A/JH

FOR CONSTRUCTION

project
KINGS CROSS R6

drawing
Scoping Elevation East

drawing no
KXC-R6-001-A-5145C-20-312- 08

drawn **DE** checked **MSB**

scale @ A1 As indicated date **06/15/15**

carillion

For information
For comment
For client sanction
For construction

PRP Architects ©
10 Lindsey Street
Smithfield
London EC1A 9HP
T +44 (0)20 7653 1200
F +44 (0)20 7653 1201
lon.prp@prparchitects.co.uk