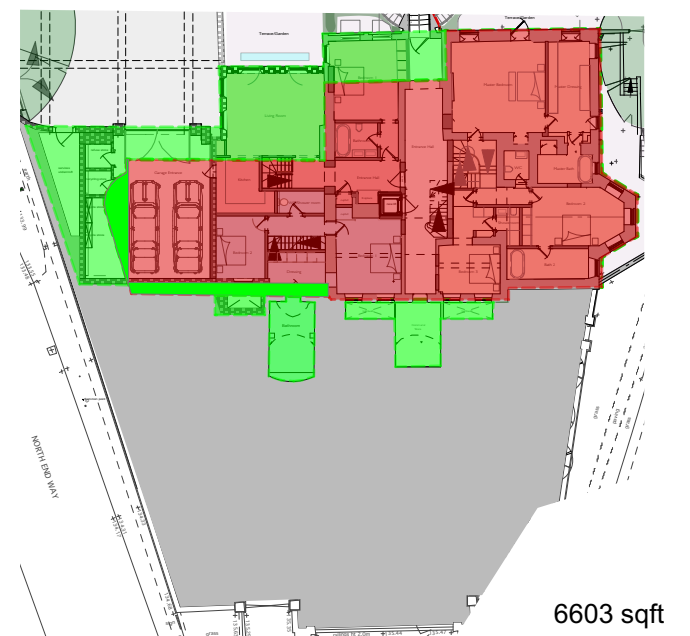
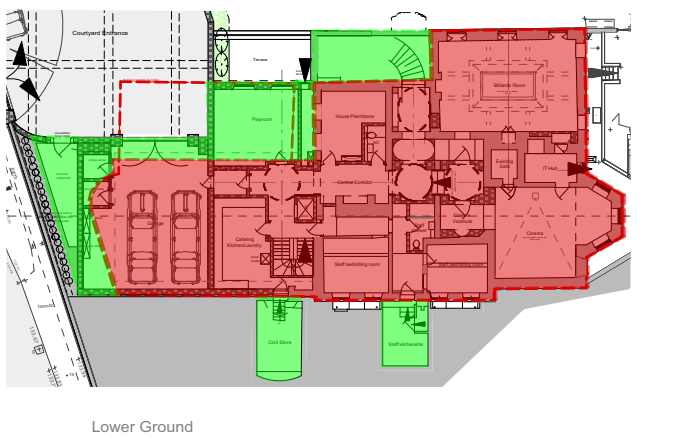
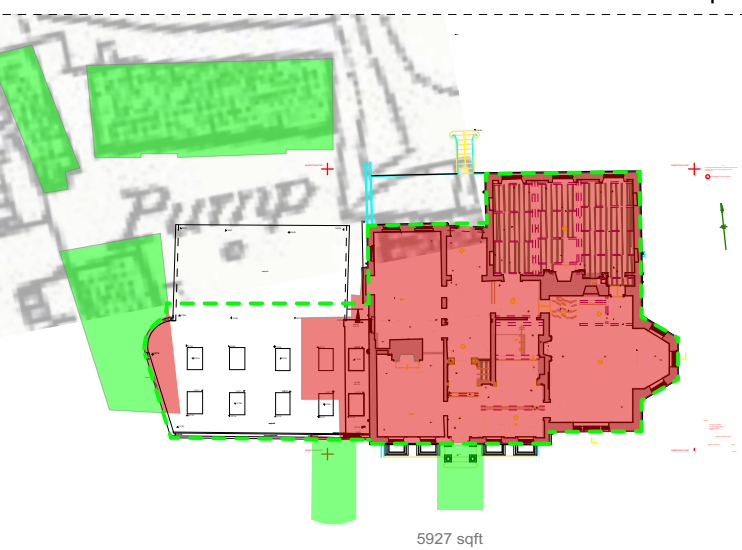
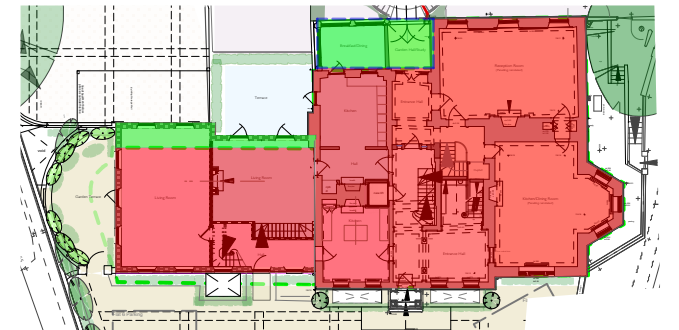
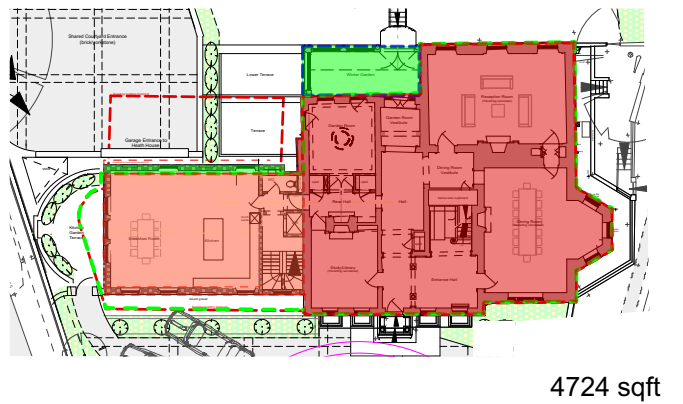
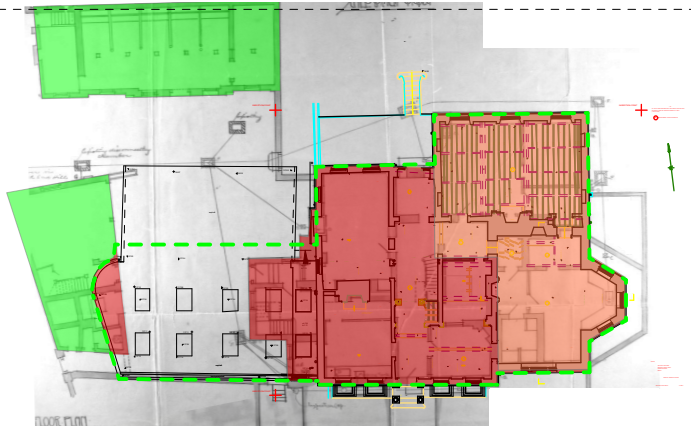
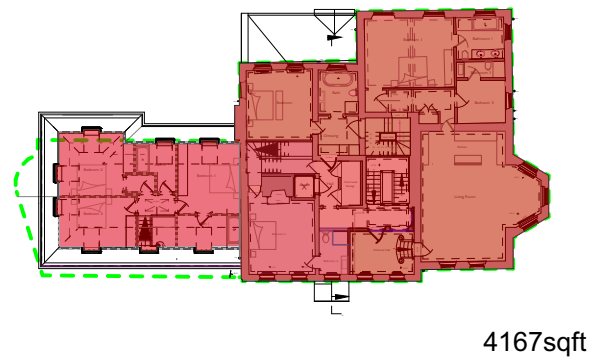
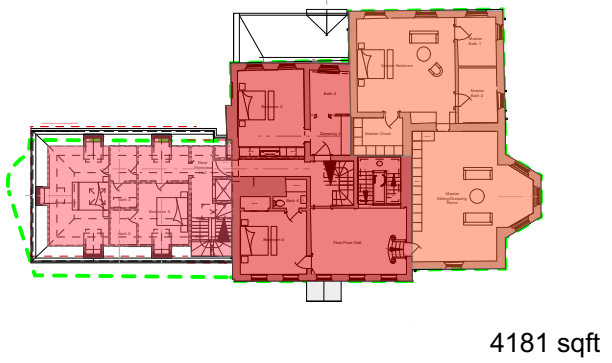
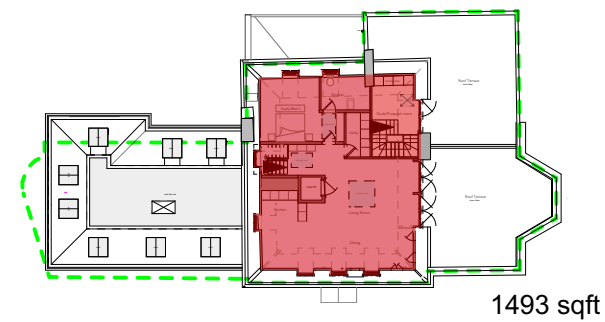
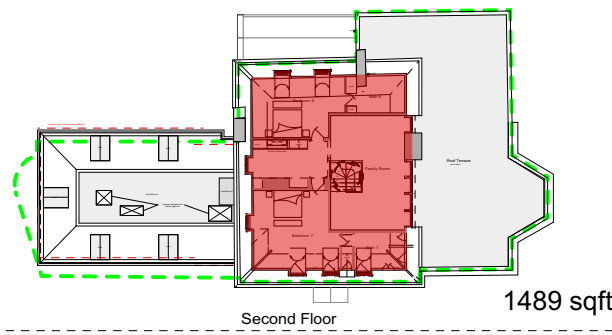


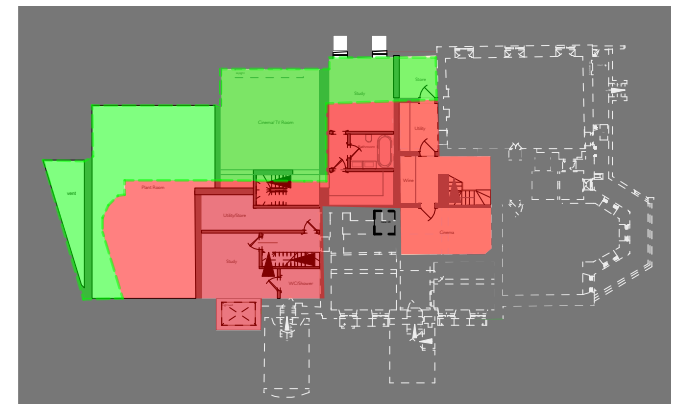
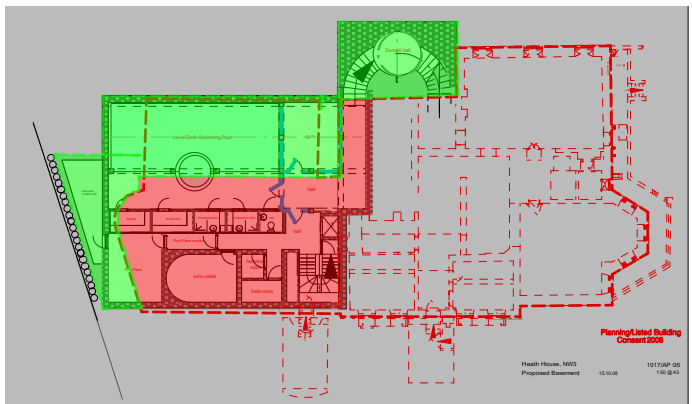
1948

2008 Consent

2015 (Proposal)



Basement



Notes:
 These areas are prepared for comparative purposes only.
 The 1948 calculation is based on based available information including 1902 drainage plan and NMR record photographs.
 Areas have not been cross checked against any previously reported areas
WORKING INFORMATION ONLY

KEY:

- MOL boundary
- Area outside MOL
- Area inside MOL

Charlton Brown Architects
Heath House
Working MOL Areas (Rev A)
 The Belvedere 2 Back Lane Hampstead London NW3 1HL
 T 020 7794 1234 E office@charltonbrown.com
 Please follow the drawings exactly. If you find errors or omissions ask for clarification. Do not pr

1948 Extent	
Second Floor	= 3578 sqft
First Floor	= 3578 sqft
Ground Floor	= 5339 sqft (1648sq ft inside MOL)
Lower Ground Floor	= 5927 sqft (2247sq ft inside MOL)
Total	= 18422sqft
Area in MOL	= 3895 sqft

2008 Consent	
Second Floor	= 1489 sqft
First Floor	= 4181 sqft
Ground Floor	= 4724 sqft (343 sq ft inside MOL)
Lower Ground Floor	= 6041 sqft(1453sq ft inside MOL)
Basement	= 3178 sqft (1667sq ft inside MOL)
Total	= 19613 sqft
Area in MOL	= 3463 sqft

2015 Proposal	
Second Floor	= 1493 sqft
First Floor	= 4167 sqft
Ground Floor	= 4854 sqft (444sq ft inside MOL)
Lower Ground Floor	= 6603 sqft (2002sq ft inside MOL)
Basement	= 3659 sqft (1534sq ft inside MOL)
Total	= 20776sqft
Area in MOL	= 3980 sq ft