

[consented work](#)  
[proposed work](#)

- 1.10 New window in existing opening
- 4.4 New chimney
- 4.5 New stone balustrade
- 4.6 Glass safety balustrade 0.5m behind revised balustrade
- 5.1 New roof
- 5.2 New dividing wall

General note on brickwork and general repairs, (as found in the release of conditions related to Listed Building Consent 2008/0662/L):

**Internal courtyard boundary walls:**

Brickwork: Ibstock West Hoathly 50:50 Handmade and Medium Multi Stock - this matches that previously approved for works in connection with the boundary walls.  
 Facing bricks laid in Flemish Bond with both bed and perpend joint to match the existing bed dimensions. Pointing: 1 part hydraulic lime (NHL 3.5), 3 parts sieved, washed sharp sand. Flush pointed then brushed to expose aggregate .

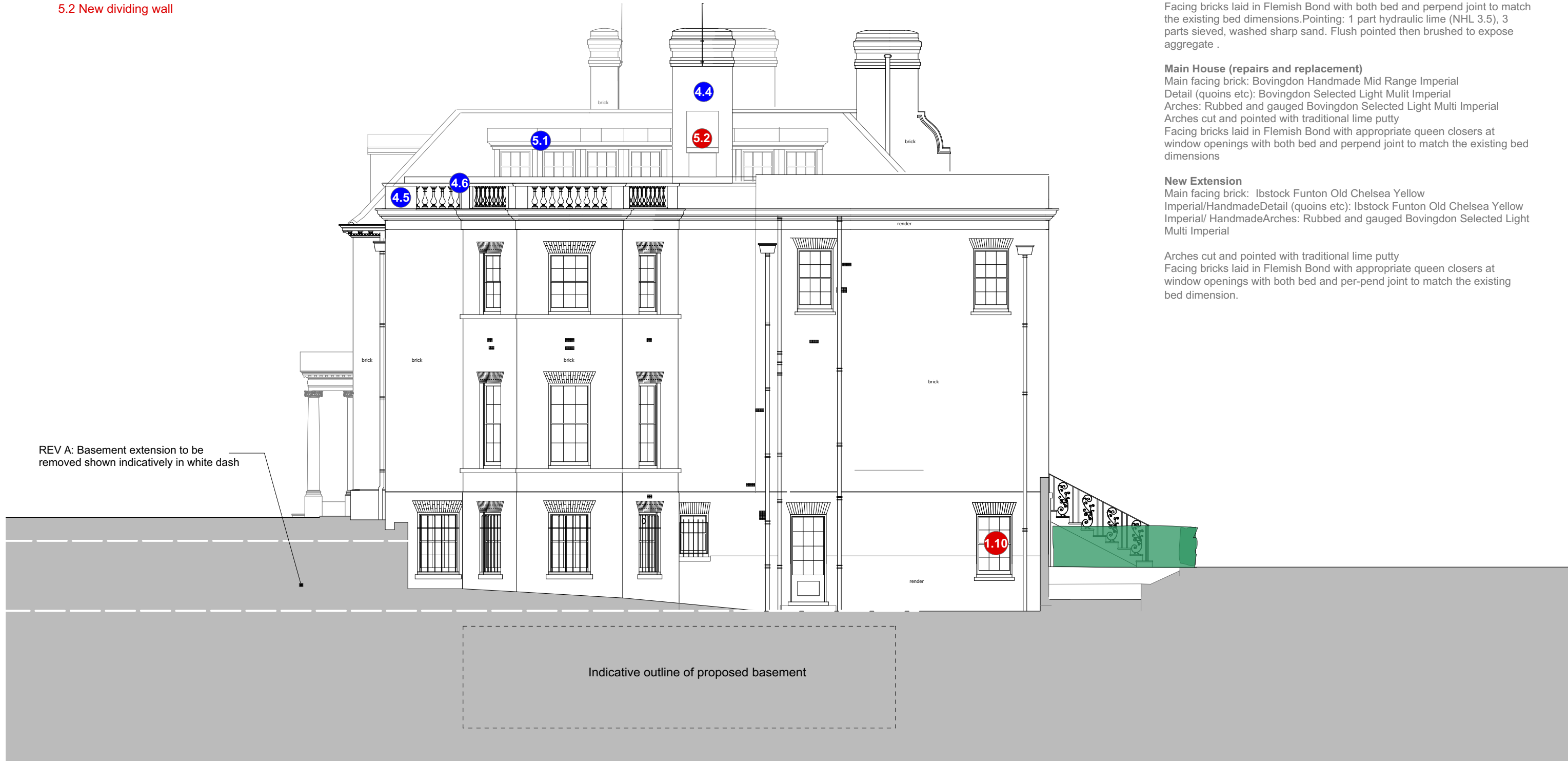
**Main House (repairs and replacement)**

Main facing brick: Bovingdon Handmade Mid Range Imperial  
 Detail (quoins etc): Bovingdon Selected Light Multi Imperial  
 Arches: Rubbed and gauged Bovingdon Selected Light Multi Imperial  
 Arches cut and pointed with traditional lime putty  
 Facing bricks laid in Flemish Bond with appropriate queen closers at window openings with both bed and perpend joint to match the existing bed dimensions

**New Extension**

Main facing brick: Ibstock Funton Old Chelsea Yellow  
 Imperial/Handmade Detail (quoins etc): Ibstock Funton Old Chelsea Yellow  
 Imperial/ Handmade Arches: Rubbed and gauged Bovingdon Selected Light Multi Imperial

Arches cut and pointed with traditional lime putty  
 Facing bricks laid in Flemish Bond with appropriate queen closers at window openings with both bed and per-pend joint to match the existing bed dimension.



REV A: Basement extension to be removed shown indicatively in white dash

Indicative outline of proposed basement

