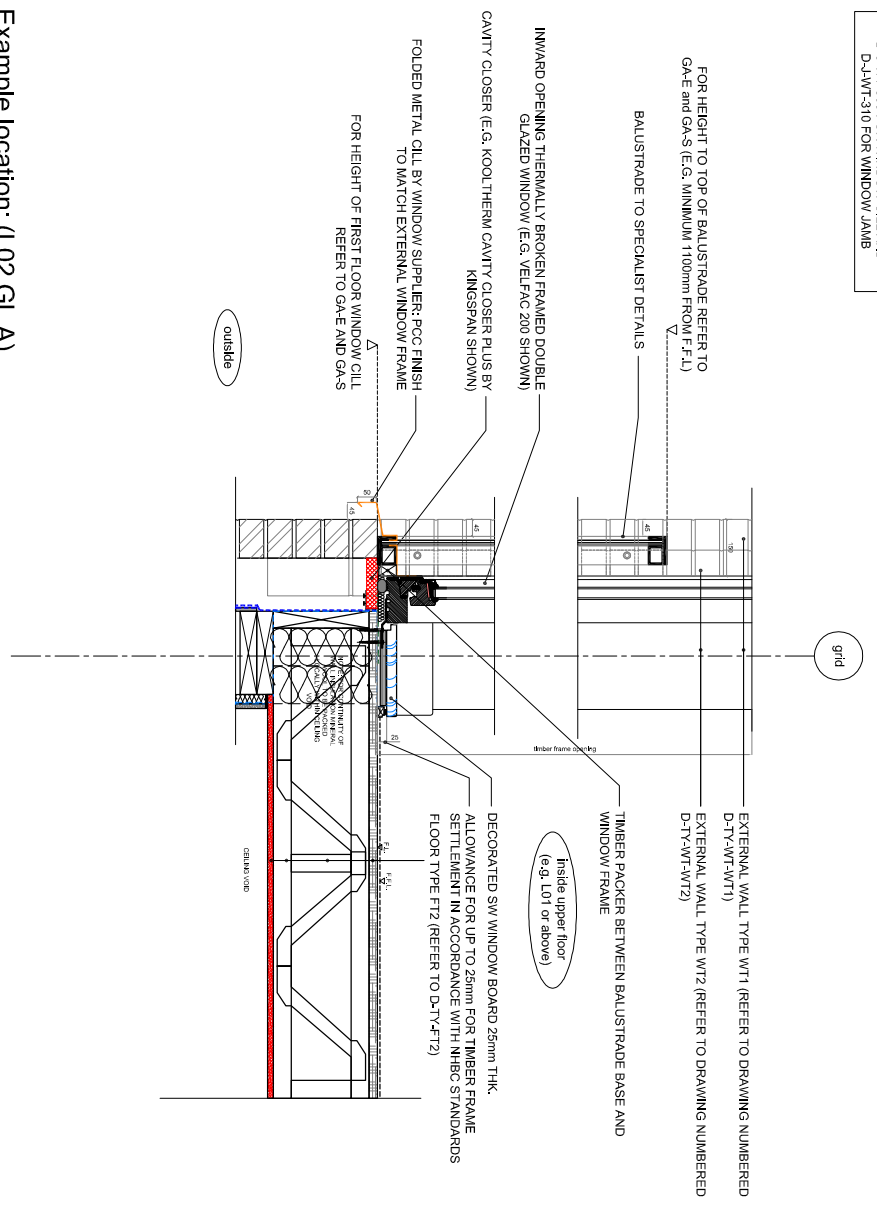


NOTE: THIS DETAIL IS TO BE READ IN CONJUNCTION WITH DETAILS D-J-WT-108 AND D-J-WT-109 FOR INTERFERENCE WITH EXTERNAL WALL TYPE WT1/WT2 AND D-J-WT-308 FOR WINDOW JAMB AND D-J-WT-310 FOR WINDOW JAMB

ACCREDITED DETAIL NEAREST TFW-WD-01 & 02
ROBUST DETAIL

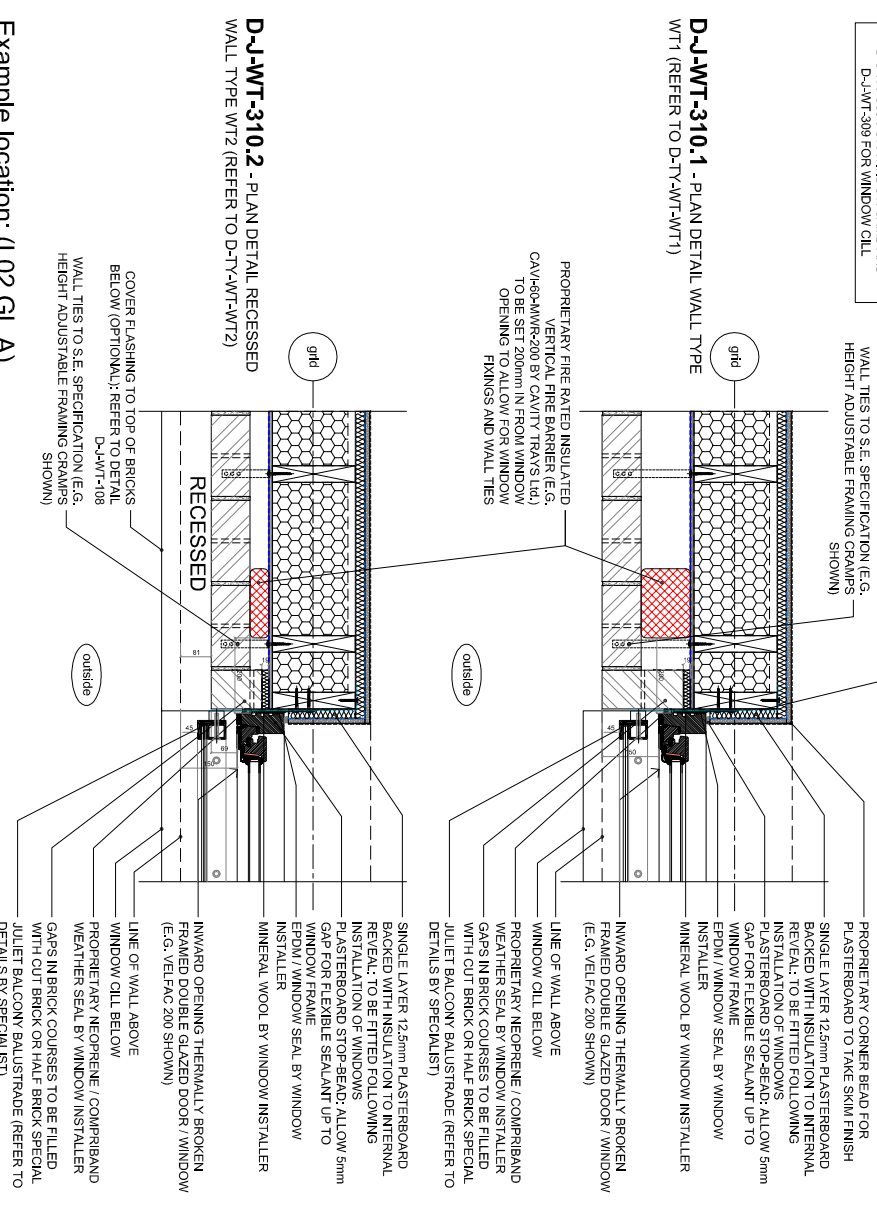


Example location: (L02 GL A)
DETAIL - Block B2 - D-J-WT-309 - Upper Level Window Cill - Inward Opening with Juliet Balcony

NOT USED

NOTE: THIS DETAIL IS TO BE READ IN CONJUNCTION WITH DETAILS D-J-WT-108 AND D-J-WT-109 FOR INTERFERENCE WITH EXTERNAL WALL TYPE WT1/WT2 AND D-J-WT-309 FOR WINDOW JAMB AND D-J-WT-310 FOR WINDOW CILL

ACCREDITED DETAIL NEAREST TFW-WD-03
ROBUST DETAIL



Example location: (L02 GL A)
DETAIL - Block B2 - D-J-WT-310 - Upper Level Window Jamb - Inward Opening with Juliet Balcony

NOT USED

Alan Camp Architects
ALAN CAMP ARCHITECTS

Alan Camp Architects LLP, 48 Urban Street, London, SE1 0NY
Tel: 020 7583 1000, fax: 020 7583 1001, mail@alancamp.com

CONSTRUCTION

job no:	BACTION LOW RISE WINDOW JAMBS	date:	06.16
client:	ALAN CAMP ARCHITECTS	scale:	1:10 @ A1
drawing no.:	D-J-WT-309 to 312	rev.:	1962
as below			

rev.	date	description	issued by	checked by
C1	03.06.16	First issue for CONSTRUCTION	DWW	RR