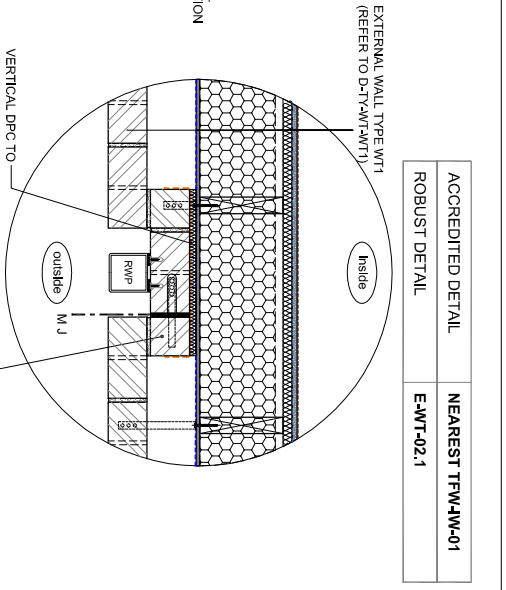
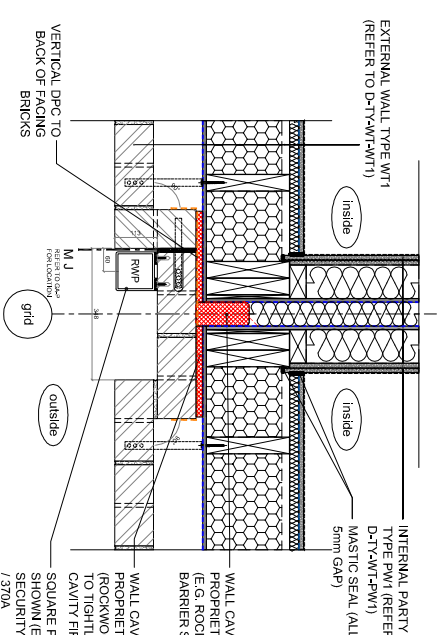


D-J-WT-105.2 - PLAN DETAIL EXAMPLE LOCATION
(L00 GL A-03)



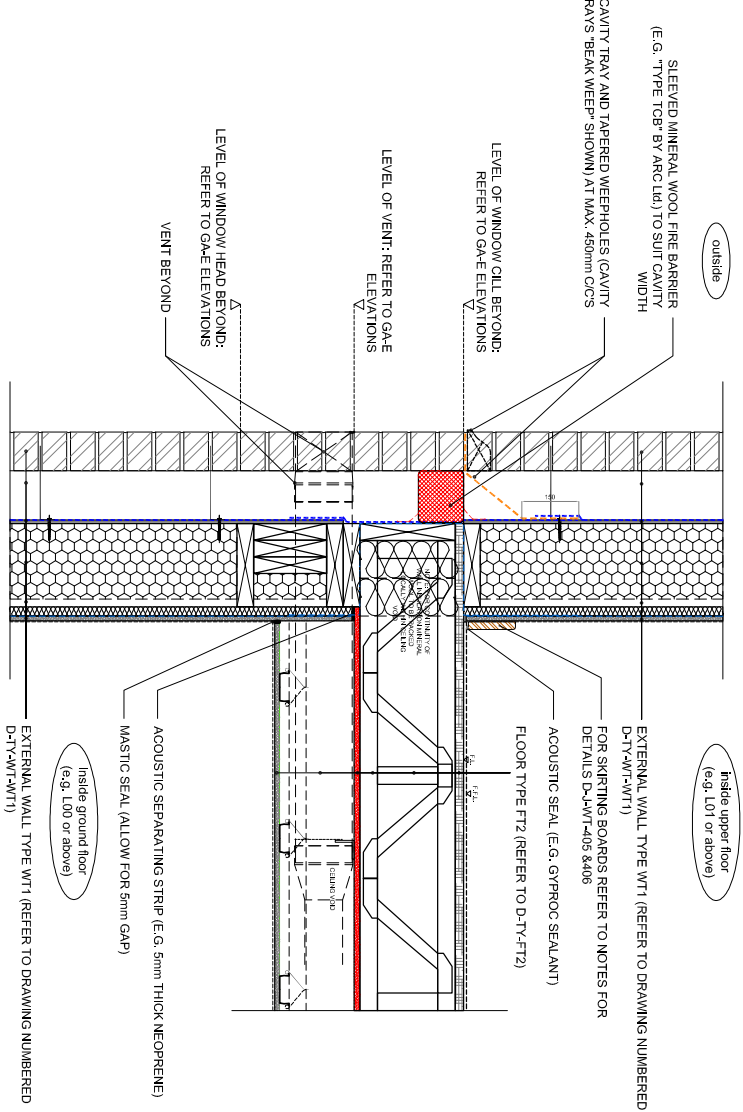
D-J-WT-105.3 - PLAN DETAIL OF BRICK COURSING ON ALTERNATE COURSE: STANDARD SPECIAL (HALF BRICK INFILLS REQUIRED)



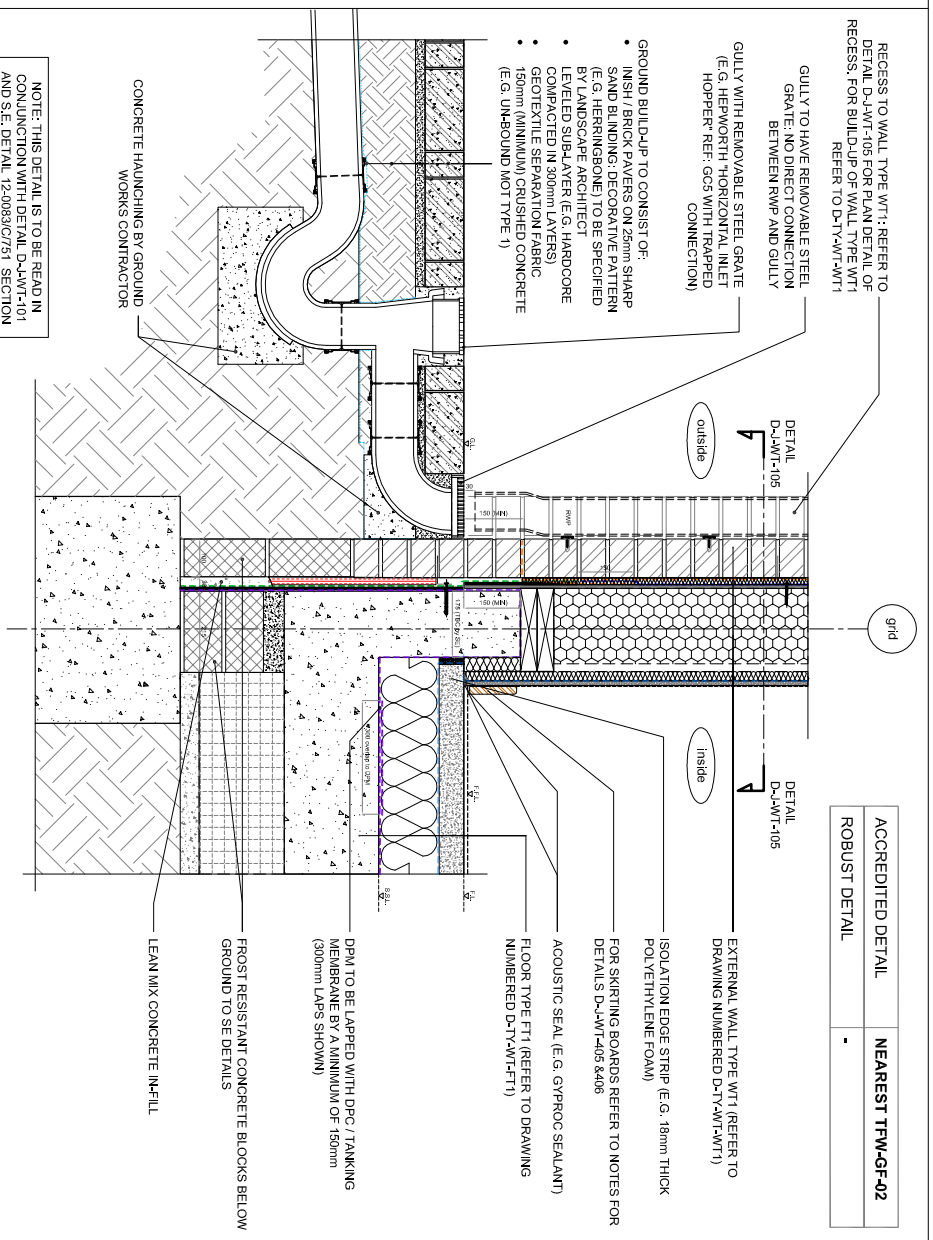
D-J-WT-105.1 - PLAN DETAIL EXAMPLE LOCATION
(L00 GL A-02)

DETAIL - Block B2 - D-J-WT-105 - Recessed Rainwater Downpipe

ACCREDITED DETAIL	NEAREST TFW4F-01
ROBUST DETAIL	NEAREST E-WT-02.1



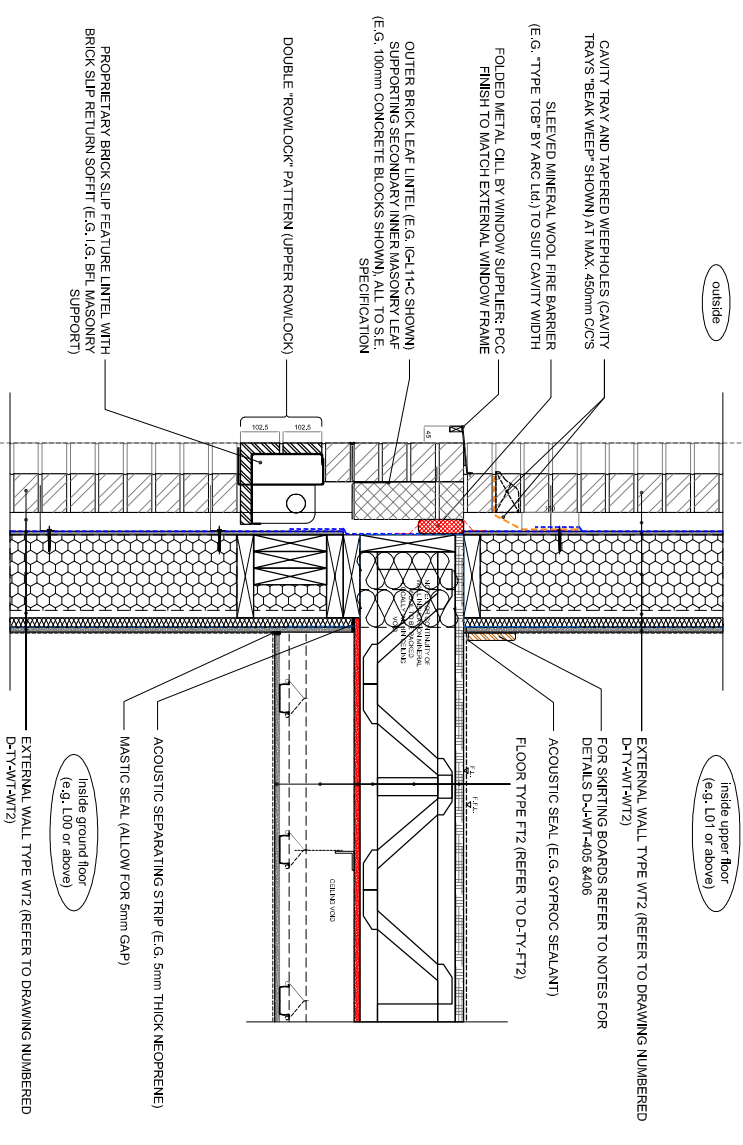
Example location: (L01 GL 03)
DETAIL - Block B2 - D-J-WT-107 - External Wall Type WT-107 / Upper Floor WT-FT2 - Section



Example location: (L00 GL A-03)
DETAIL - Block B2 - D-J-WT-106 - GF Tanking - Wall Type WT-106 / WT-FT1 - Recessed RWP

NOTE: THIS DETAIL IS TO BE READ IN CONJUNCTION WITH DETAIL D-J-WT-109

ACCREDITED DETAIL	NEAREST TFW4F-01
ROBUST DETAIL	NEAREST E-WT-02.1



Example location: (L02 GL A-02/03)
DETAIL - Block B2 - D-J-WT-108 - External Wall Type WT-108 / Upper Floor WT-FT2 - Section

ALAN CAMP ARCHITECTS
Alan Camp Architects LLP, 48 Upper Street, London, SE1 0NY
Tel: 020 7593 1000, fax: 020 7593 1001, mail@alancamp.com

CONSTRUCTION

DATE: 06.16
SCALE: 1:20 @ A1
DRAWING NO.: D-J-WT-105 TO 108
AS BELOW

ISSUED BY: DWW
CHECKED BY: RR

DESCRIPTION: First issue for CONSTRUCTION