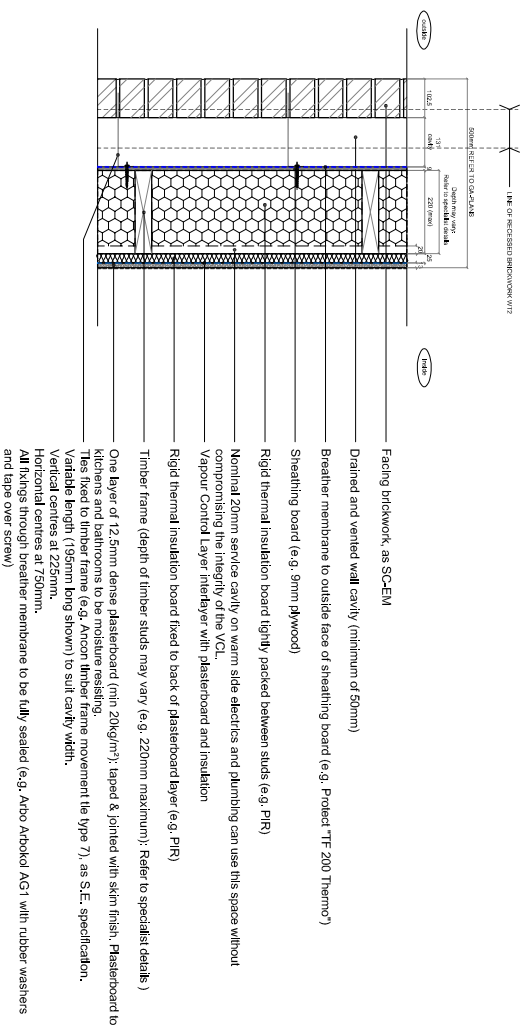


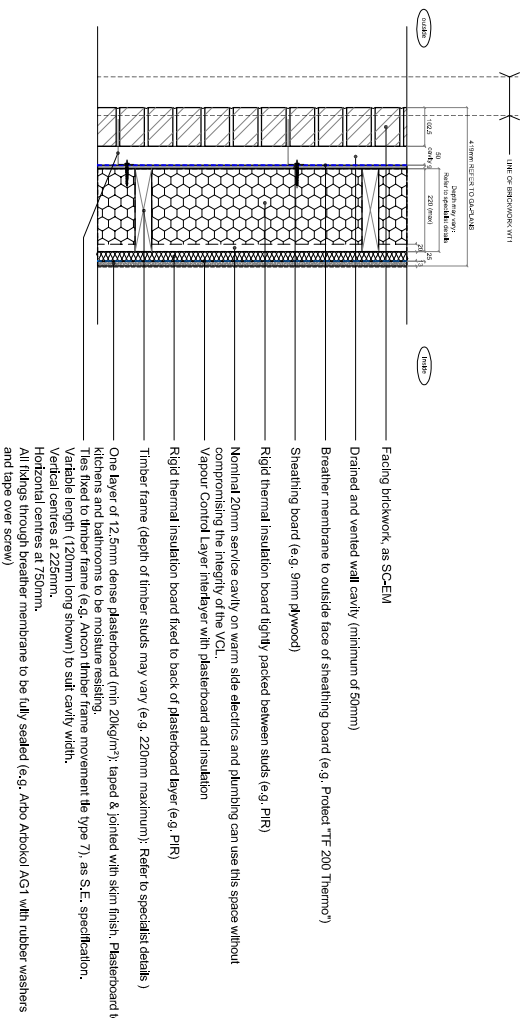
ACCREDITED DETAIL	-
ROBUST DETAIL	-



- NOTE:
- TARGET U-VALUE: 0.12 W/m<sup>2</sup>K
  - U-VALUE OF 0.11 ACHIEVED AS HARMONY TIMBER CALCULATION DATED 14.03.16.
  - ALL INSULATING MATERIAL TO HAVE A GLOBAL WARMING POTENTIAL OF LESS THAN 5.
  - SERVICES RECESSED INTO STUD ZONE TO MAKE ENGINEERS DETAILS.
  - BASED ON GREEN GUIDE TO SPECIFICATION REFERENCE ELEMENT NUMBER:

BLOCK B2 DETAIL - D-TY-WT-WT1 - SECTION

ACCREDITED DETAIL	-
ROBUST DETAIL	-



- NOTE:
- TARGET U-VALUE: 0.12 W/m<sup>2</sup>K
  - U-VALUE OF 0.11 ACHIEVED AS HARMONY TIMBER CALCULATION DATED 14.03.16.
  - ALL INSULATING MATERIAL TO HAVE A GLOBAL WARMING POTENTIAL OF LESS THAN 5.
  - SERVICES RECESSED INTO STUD ZONE TO MAKE ENGINEERS DETAILS.
  - BASED ON GREEN GUIDE TO SPECIFICATION REFERENCE ELEMENT NUMBER:

BLOCK B2 DETAIL - D-TY-WT-WT2 - SECTION - (Recessed)

NOT USED

NOT USED

**Rydon** ALAN CAMP ARCHITECTS

Alan Camp Architects LLP, 68 Lifford Street, London, SE11 6NW  
 Tel: 020 7593 1000, Fax: 020 7593 1001, mail@alancamp.com

job no:	06.16
client:	ALAN CAMP ARCHITECTS
project:	RECESS
description:	TYPICAL BLOCK B2 DETAILS
sheet no.:	1 : 20 @ A3
drawing no.:	D-TY-WT-1962
rev.:	as below

DATE: 03.06.16 | FIRST ISSUE FOR CONSTRUCTION | ISSUED BY: DW | CHECKED BY: RR

NOTE: TO BE READ IN CONJUNCTION WITH ACA WALL TYPE KEY PLAN. PLEASE REFER TO ACA GA-P's