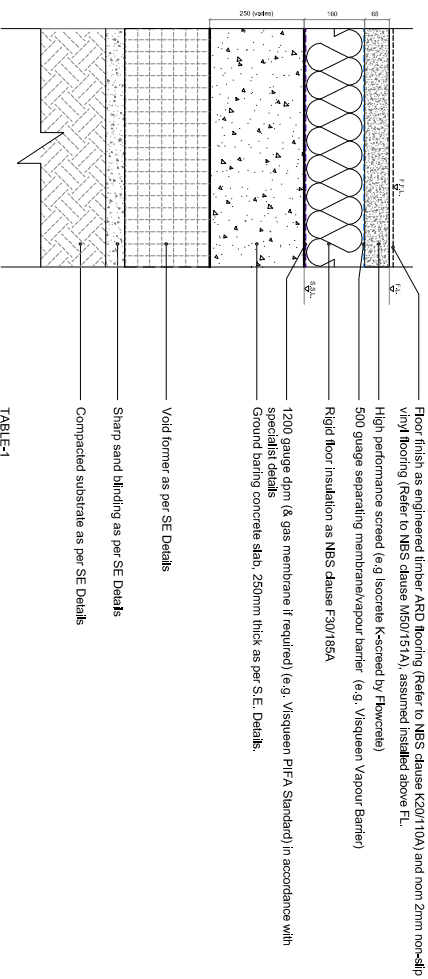


ACCREDITED DETAIL	-
ROBUST DETAIL	-

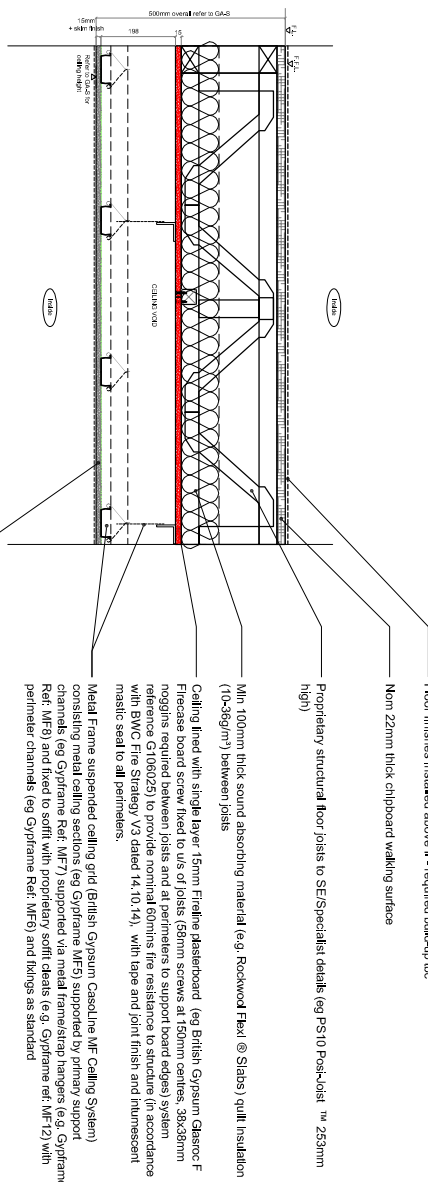
ACCREDITED DETAIL	-
ROBUST DETAIL	Nearest E-FT-06



BLOCK	Perimeter (m)	Area (m <sup>2</sup> )	Target U-value	U-value (Kingspan)	U-value (Celvex)
B2	44.7	118	0.10	0.10	0.11

- NOTE:
1. Target U-value: 0.1 W/m<sup>2</sup>K
  2. KINGSPAN U-VALUES REFER TO TABLE-1 ABOVE/ACHIEVED USING 160mm KINGSPAN
  3. CELVEX U-VALUES REFER TO TABLE-1 ABOVE/ACHIEVED USING 160mm
  4. ALL INSULATING MATERIAL TO HAVE A GLOBAL WARMING POTENTIAL OF LESS THAN 5
  5. SERVICES RECESSED INTO LGS ZONE TO MAE ENGINEERS DETAILS
  6. BASED ON GREEN GUIDE TO SPECIFICATION REFERENCE ELEMENT NUMBER: 82100048

BLOCK B2 DETAIL - D-TY-WT-FT1



BLOCK B2 DETAIL - D-TY-WT-FT2

NOT USED

NOT USED

job no:	06.16	date:	06.16
client:	ALAN CAMP ARCHITECTS	drawn by:	DWW
project name:	FACTORY LOW RISE	checked by:	RR
location:	LONDON NW5	scale:	1:20 @ A3
typical block:	B2 DETAILS	drawing no.:	D-TY-WT-FT1 to FT4
sheet:	1	rev.:	as below

rev.	date	description	issued by	checked by
C1	03.06.16	First issue for CONSTRUCTION	DWW	RR

NOTE: TO BE READ IN  
 CONJUNCTION WITH ACA  
 WALL TYPE KEY PLAN.  
 PLEASE REFER TO ACA  
 GA-P's