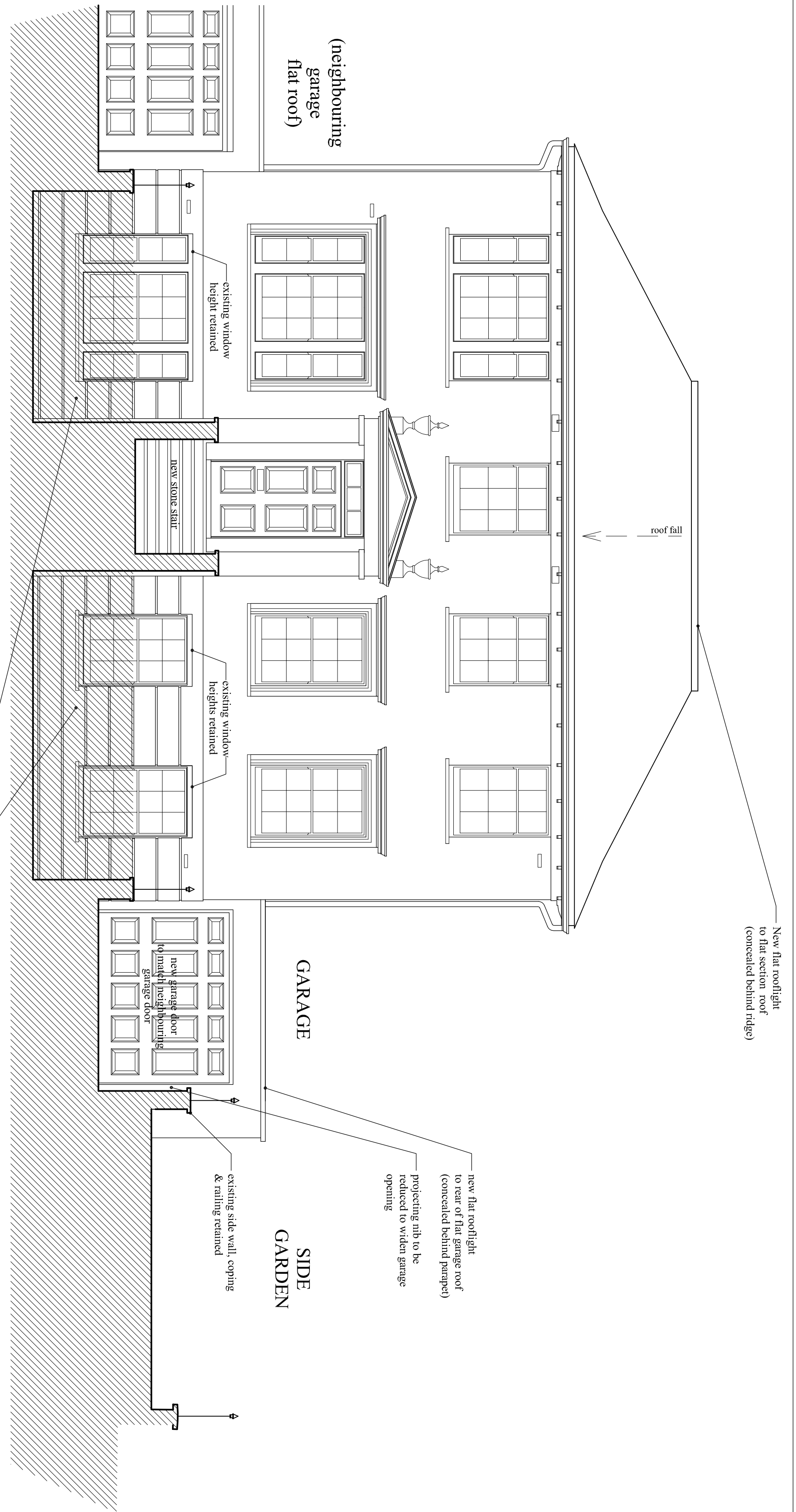


All dimensions to be checked onsite.  
DO NOT SCALE THIS DRAWING

NOTES

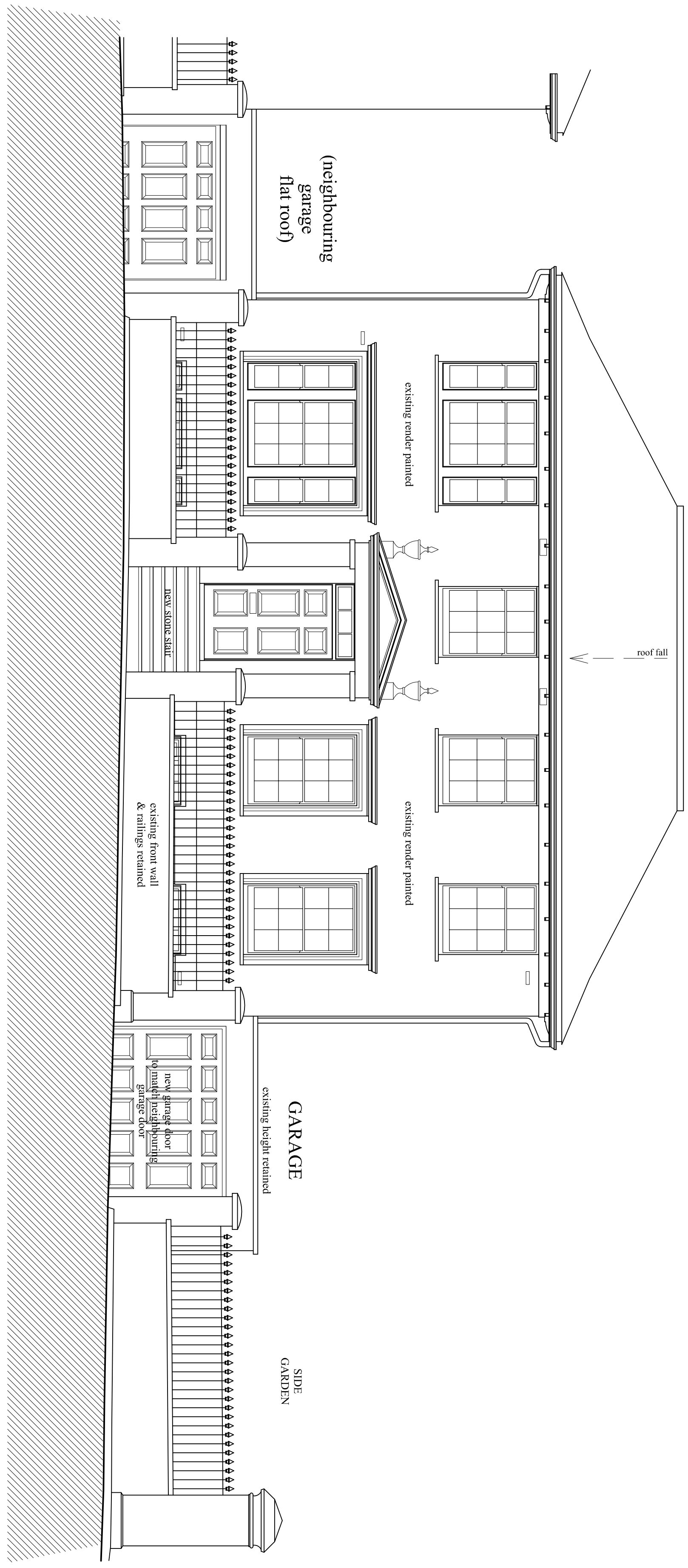
© Copyright      CHARLES BRICE LTD

This confidential drawing and the copyright is the property of Charles Brice Ltd and is not to be copied in any way, nor disclosed to any third party without the written consent of Charles Brice Ltd.



FRONT ELEVATION 02 - As Proposed

creation of lightwells with lowered windows to Lower Ground Floor bedrooms sinceco with painted finish to lightwell walls & new windows to match existing timber sash windows in details

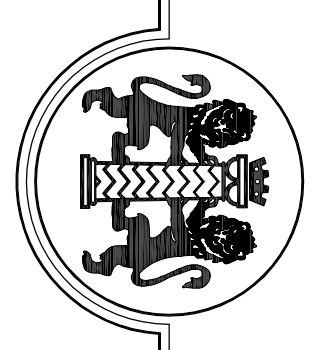


FRONT ELEVATION 01 - As Proposed

PLANNING

A	railing to neighbour's side moved over	08.07.16
REVISIONS		

REVISIONS



CHARLES BRICE LTD  
95 YORK STREET  
MARLBORNE  
LONDON W1H 4QG  
Tel. 020 7491 1932 Fax. 020 7491 1952  
Email: office@charlesbrice.co.uk  
www.charlesbrice.co.uk

Title Front Elevations 01 & 02  
- As Proposed  
Project 15 Park Village West  
London NW1 4AE  
Client Mr & Mrs Gurbanov

Scale	Date	Drawn By
1:50@A1	Mar 2016	db
Job Number	Drawing Number	Revision
885	PL05	A