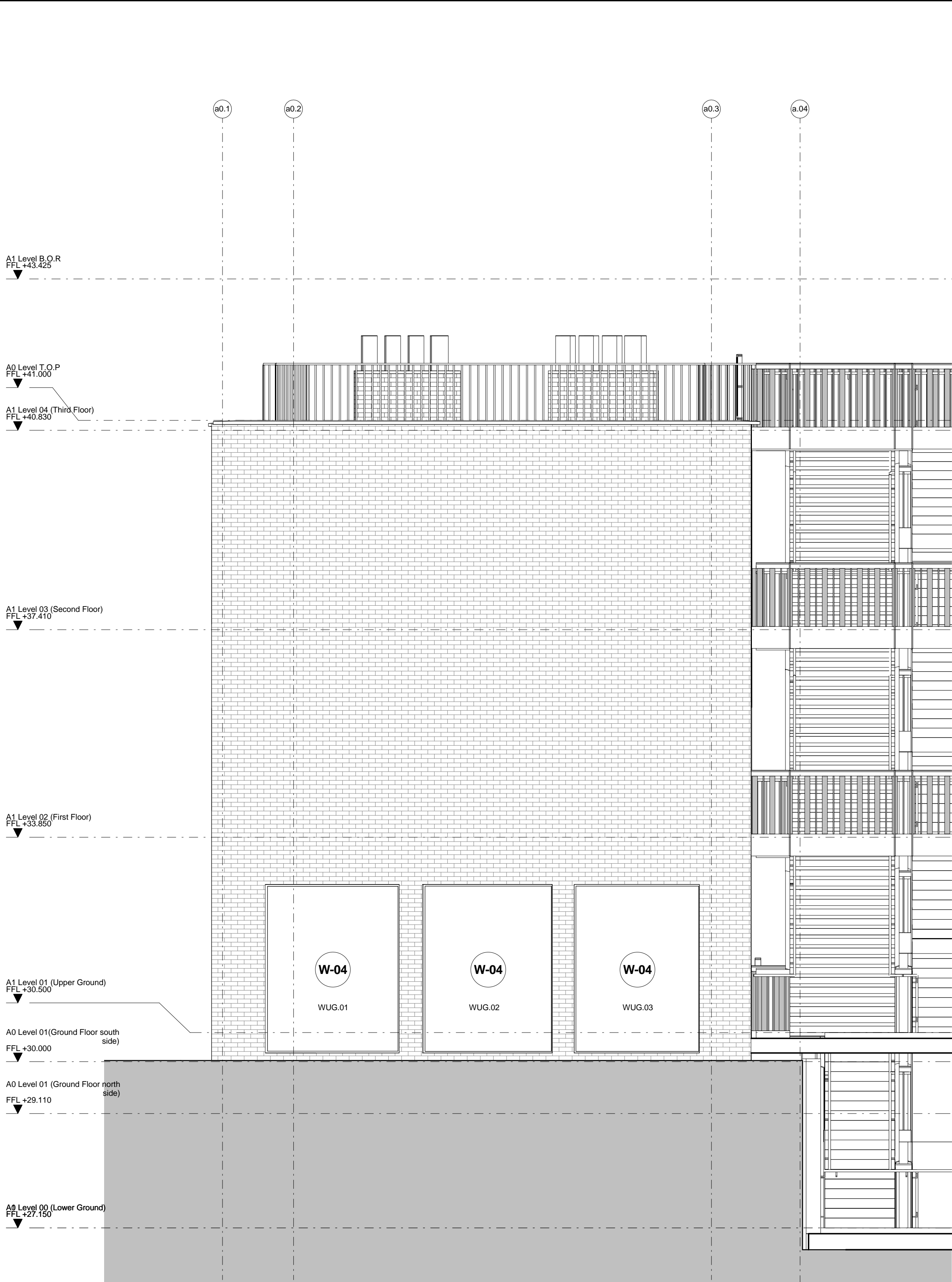


1 Window Scope - A0 North Elevation



2 Window Scope - A0 South Elevation

NOTES <div>W-01 Window Type</div> <div>W2.01 Window Number</div> <div>EW2.01 Replacement Windows</div> <div>1. Final Design for Shopfront Glazing subject to Council Review</div> <div>2. Refer to AX_(32) series for doors to A0</div> <div>3. Refer to AX_(31)_1000 for new windows</div> <div>4. Refer to MX_(71) series for gate details</div> <div>5. All existing openings for windows to be measure on site prior to manufacture</div> <div>6. Variations to drawings to be agreed with Heritage Planner</div> <div>REPLACEMENT WINDOW TYPES</div> <div>W-A Timber Sash with double glazing</div> <div>W-B Timbe Sash with double glazing</div> <div>W-C French Doors with Fanlight, double glazing</div>		NEW WINDOW TYPES <div>W-01 Timber Sash with double glazing</div> <div>W-02 Timber Sash with double glazing</div> <div>W-03 Fixed glazing</div> <div>W-04 Operable shopfront glazing</div> <div>W-05 Crittal windows</div> <div>W-06 Hansen Millenium (Refer to 21 series for details)</div> <div>W-07 Hansen Millenium (Refer to 21 series for details)</div> <div>W-08 Rooflight System (Refer to 27 series for details)</div> <div>W-09 Crittal Window adjacent to Stair 02</div> <div>W-10 Fixed Glazing adjacent to Stair 03</div> <div>W-11 Fixed Glazing adjacent to Platform Lift</div> <div>W-12 Crittal windows</div>		REV DATE DESCRIPTION F01 01/07/16 Stage F - For Coordination	CONSULTANTS <div>CLIENT: Stanley Sidings</div> <div>CONTRACTOR: Mace Group</div> <div>STRUCTURAL ENGINEER: Walsh Group</div> <div>MECHANICAL ENGINEER: AECOM</div> <div>COST CONSULTANT: Gardiner & Theobald</div> <div>PROJECT MANAGER: Gardiner & Theobald</div> <div>ACOUSTIC CONSULTANT: Arup</div> <div>TRANSPORT CONSULTANT: Arup</div> <div>PLANNING CONSULTANT: Gerald Eve</div> <div>LANDSCAPE ARCHITECT: Fabrik</div> <div>CDM CO-ORDINATOR: Gardiner & Theobald</div>		NOTE <div>1. Do not scale from this drawing.</div> <div>2. All dimensions to be checked on site by the contractor and such dimensions to be his responsibility.</div> <div>3. Report all drawing errors, omissions and discrepancies to the architect.</div> <div>4. This document may be issued in an uncontrolled CAD format to enable others to use it as background information to make alterations and/or additions. In that instance the file will be accompanied by a PDF version. It is for those making such alterations and additions to ensure that they make use of current background information.</div> <div>AHMM Ltd accepts no liability for any such alterations or additions to the background information or arising out of changes to background information which occur prior to alterations of additions being made.</div>			AL FORD HALL MONAGHAN MORRIS ARCHITECTS Ltd 5-23 OLD STREET, LONDON, EC1V 9HL TEL 020 7251 5261 FAX 020 7251 5123 WEB WWW.AHMM.CO.UK job title CAMDEN LOCK VILLAGE drawing title / location Window Scope - Building A0 North & South Elevation drawn by checked scale status FG AH 1 : 50 @ A1 For Coordination project zone C1/S1B drawing no. revision 14045 AX_(31)_ 0011 F01	
--	--	--	--	--	--	--	--	--	--	--	--