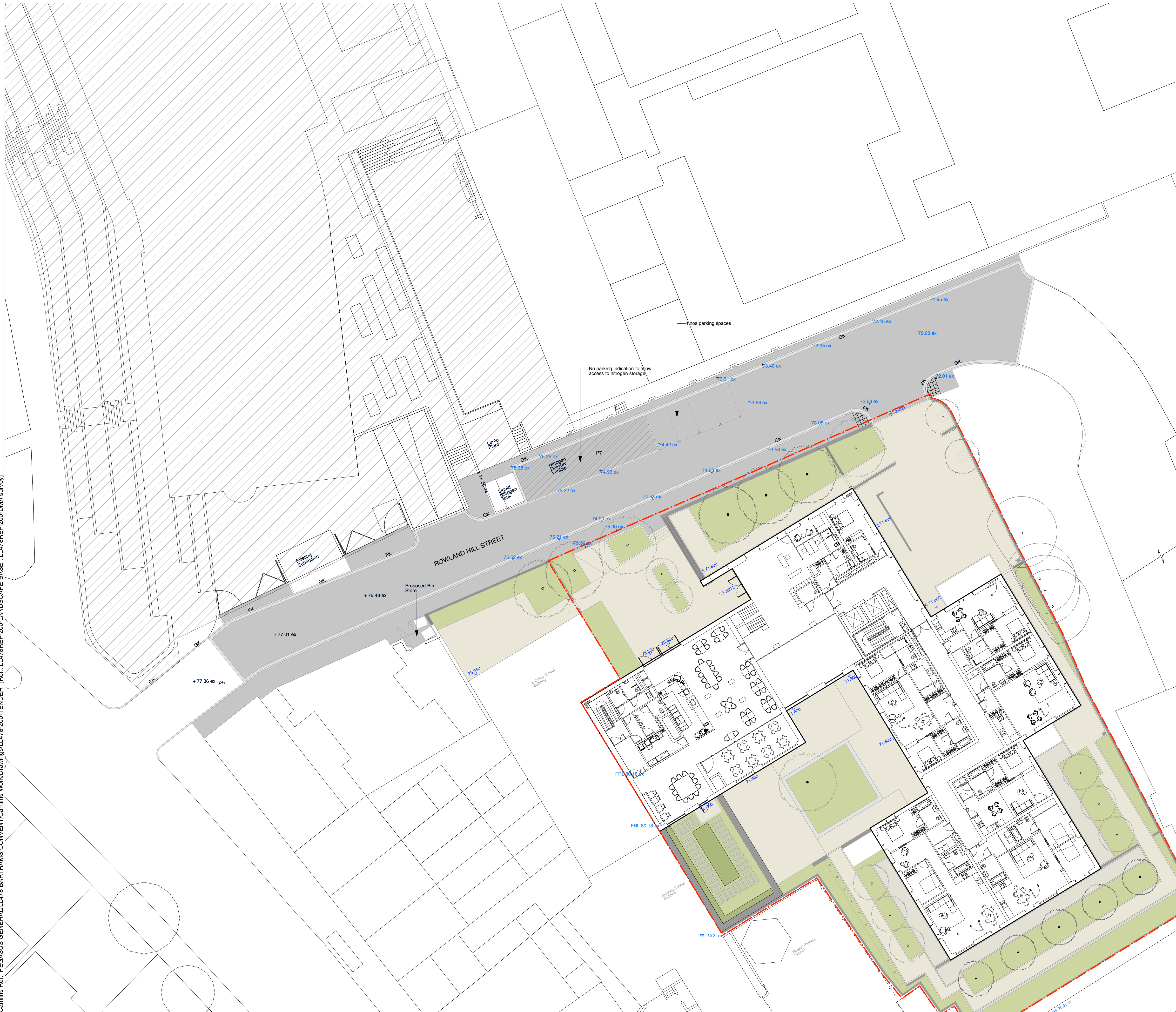







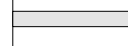



Camllins Ref: PEGASUS GENERAL/LL478 BARTRAMS CONVENT/Camllins WorkDrawings/LL478-200-TENDER [Ref: LL478REF-200-LANDSCAPE BASE : LL478REF-200-DMA survey]



- NOTES**
1. All dimensions in millimetres unless otherwise shown.
 2. All levels in metres above Ordinance Datum (mAOD) unless otherwise shown.
 3. All dimensions to be checked on site and any discrepancies reported to Employer before pricing / work starts.
 4. Any ambiguities or discrepancies within this drawing and any other information given elsewhere must be reported to Camllins and the Employer for clarification before pricing work proceeds.
 5. All drawings to be read in conjunction with other Camllins drawings and specification information as required.
 6. Refer to relevant Engineer's and Architect's work packages as appropriate for confirmation of all engineering and architectural details.
 7. All works to be carried out in accordance with the latest British Standards and appropriate codes of practice as a minimum.

- KEY:**
-  Hampstead Green application boundary line
 -  Pears building application boundary line
 -  Neighbouring development
 -  Bitumen Macadam carriageway
 -  Mid grey granite kerbs to have 10mm bullnose radius 255mm height x 780mm lengths x 125mm width
 -  Mid grey flush granite kerbs 255mm height x 780mm lengths x 125mm width
 -  Mid grey drop granite kerbs 255/150mm height x 780mm lengths x 125mm width
 -  Mid grey granite channel 125mm height x 914mm lengths x 255mm width
 -  Mid grey tactile granite paving

Revisions

Rev	Date	Description	Revised by	Checked by



FOR INFORMATION

HAMPSTEAD GREEN
PEGASUSLIFE

General Arrangement - Rowland Hill Street

Drawing No. LL478-000-1301	Revision -	Scale 1:200@A1	Date 08.02.2016
Drawn by SB	Checked by AN		

Camllins
Landscape Architects, New Dolanog House, Severn Road, Welshpool, Powys, SY21 7AP
Tel: 01938 554886 / studio@camllins.com / www.camllins.com