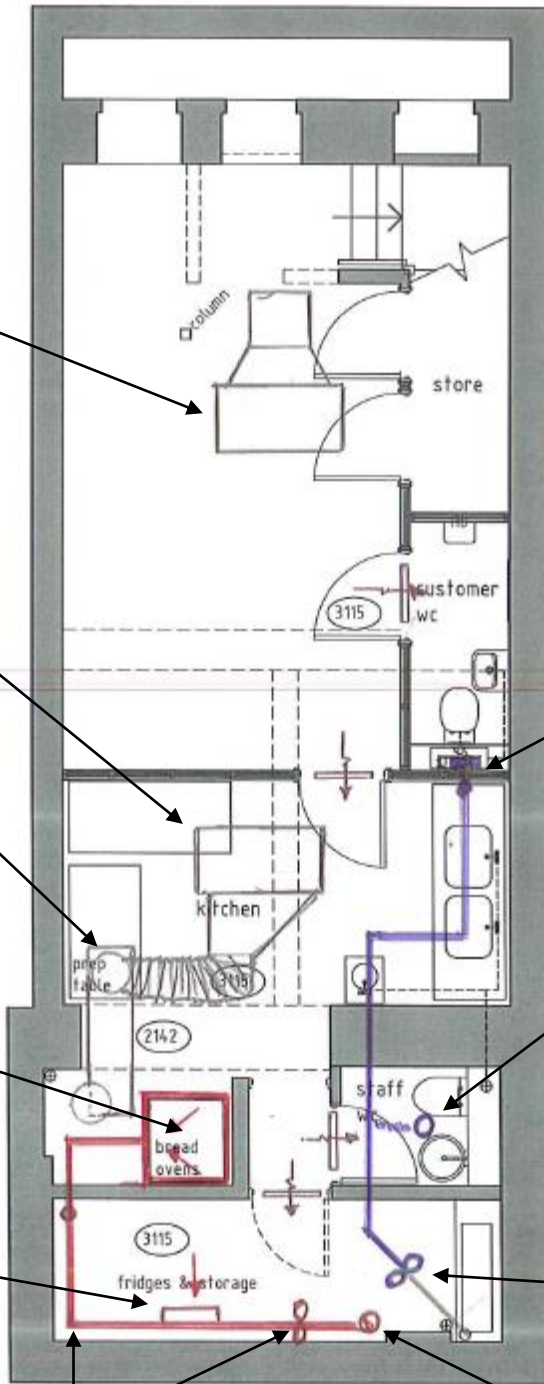


Proposed ventilation & air conditioning works, Nordic Bakery Neal St London



2 no Mitsubishi ducted units to remain. Units and ductwork to be concealed by 2200long x 1800w x 650high boxing c/w 1100long x 1800wide access panel to under side



existing rectangular duct to be move across 530mm tight to side wall. Reconnect to fan coil taper with new 250dia insulated flex

new 100 dia spiral duct runs at HL and drops under beam into end wall of WC complete with 100dia extract valve



new catchment canopy over oven

fit new 100dia extract valve onto new duct to serve existing WC

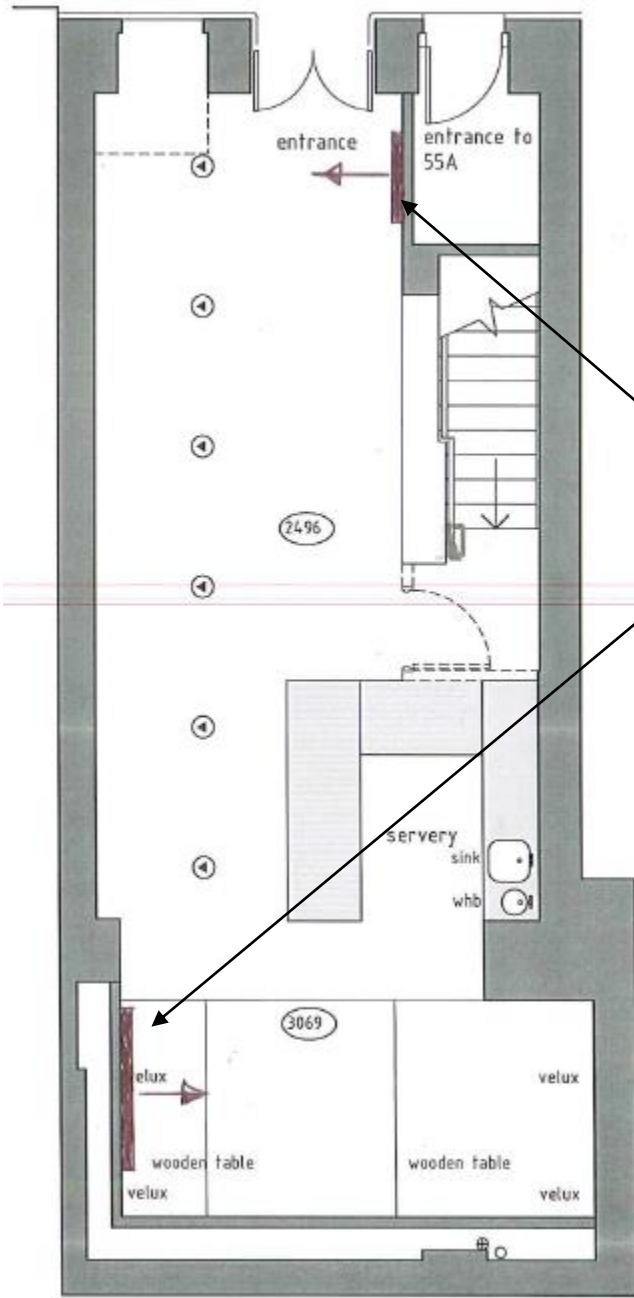
new spiral duct grille to extract from fridge / freezer store room

cut back existing 100dia PVC duct and fit new 100dia in line fan toilet extract fan and spiral duct to serve new and existing WC's.

new 150 dia in line fan and spiral duct work runs at HL to oven canopy

existing 150dia duct to be retained for oven extract.

NEAL STREET



2no existing air conditioning linear grilles to remain



Roof Terminations

- 100 dia waste pipe
- 150 dia oven extract duct
- 100 dia duct for pipework services
- 100 dia PVC duct