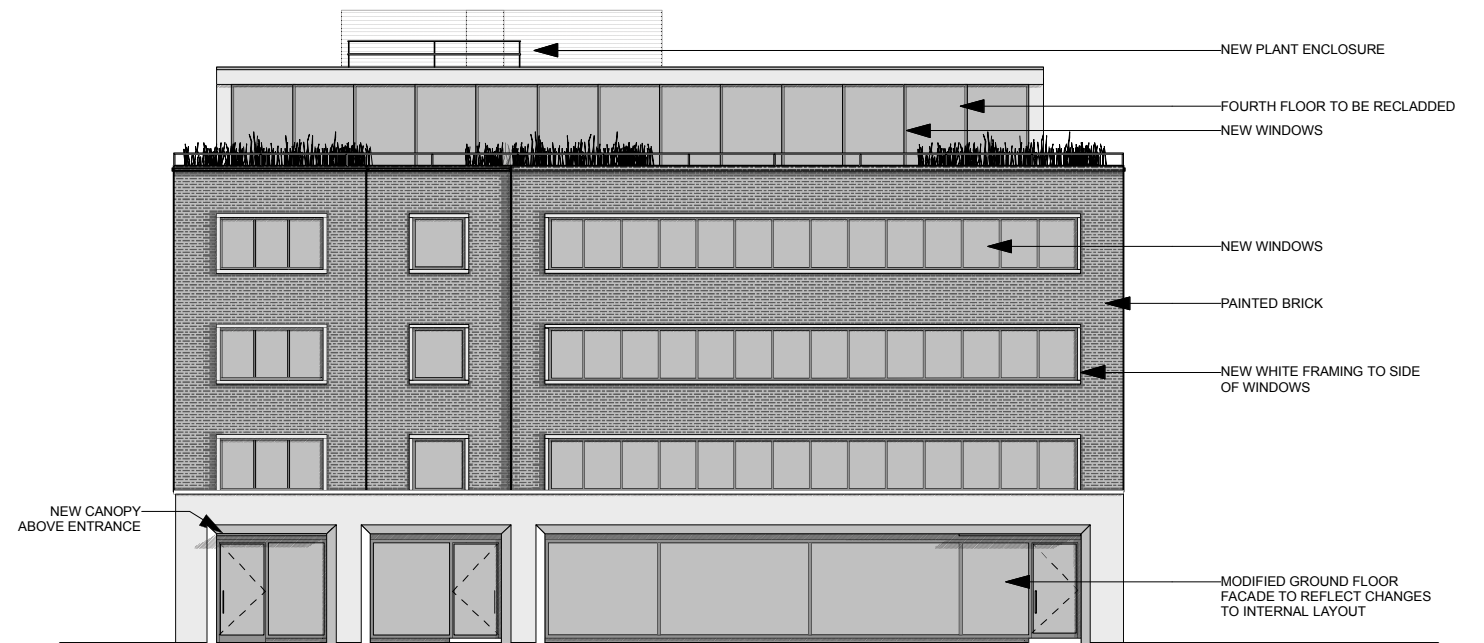


PAINTED BRICKWORK TO FRONT FACADE AS PROPOSED (RAL 9004)



FRONT ELEVATION 1:200



VIEW FROM PENTONVILLE ROAD / NORTHDOWN STREET

GENERAL NOTES:
 Do not scale from this drawing.
 Check drawing on receipt and immediately report any discrepancies to the Architect.
 Verify all dimensions and levels on site prior to construction.
 The contents of this drawing are Stiff + Trevillion Architects LLP copyright and shall not be re-used without their written permission.

No.	Date	Revision Notes

PLANNING

Stiff + Trevillion

Stiff + Trevillion Architects Ltd
 16 Woodfield Road
 London W9 2BE
 T +44(0)20 8960 5550
 F +44(0)20 8969 8668
 mail@stiffandtrevillion.com
 www.stiffandtrevillion.com

Project 207-215 KINGS CROSS ROAD LONDON WC1X		
Drawing PAINTED BRICKWORK TO NORTH ELEVATION		
Project No 3926	Drawing No SK160706-001	Revision P1
1:200 @ A3 Scale	Date JUL 2016	Revised 06/07/16