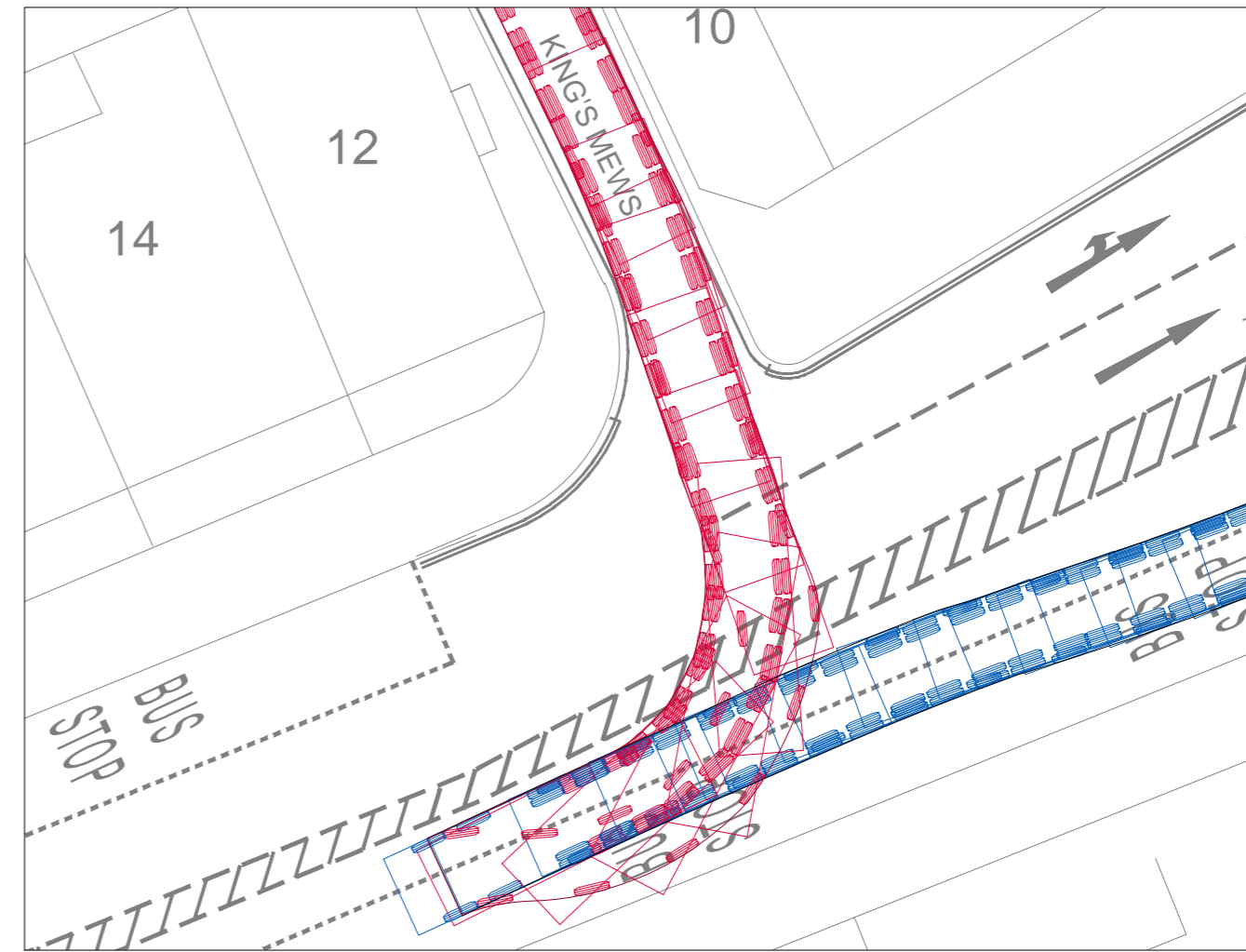
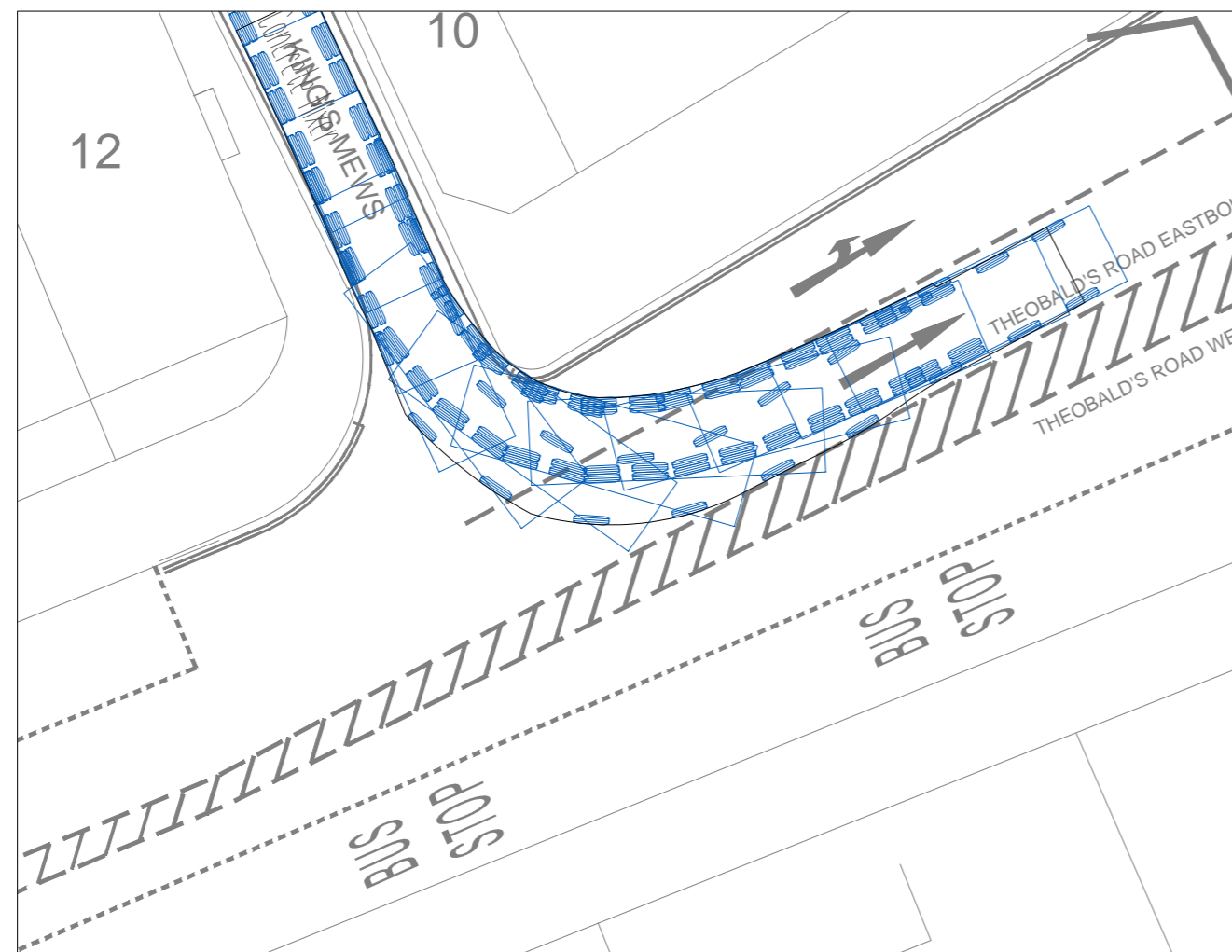


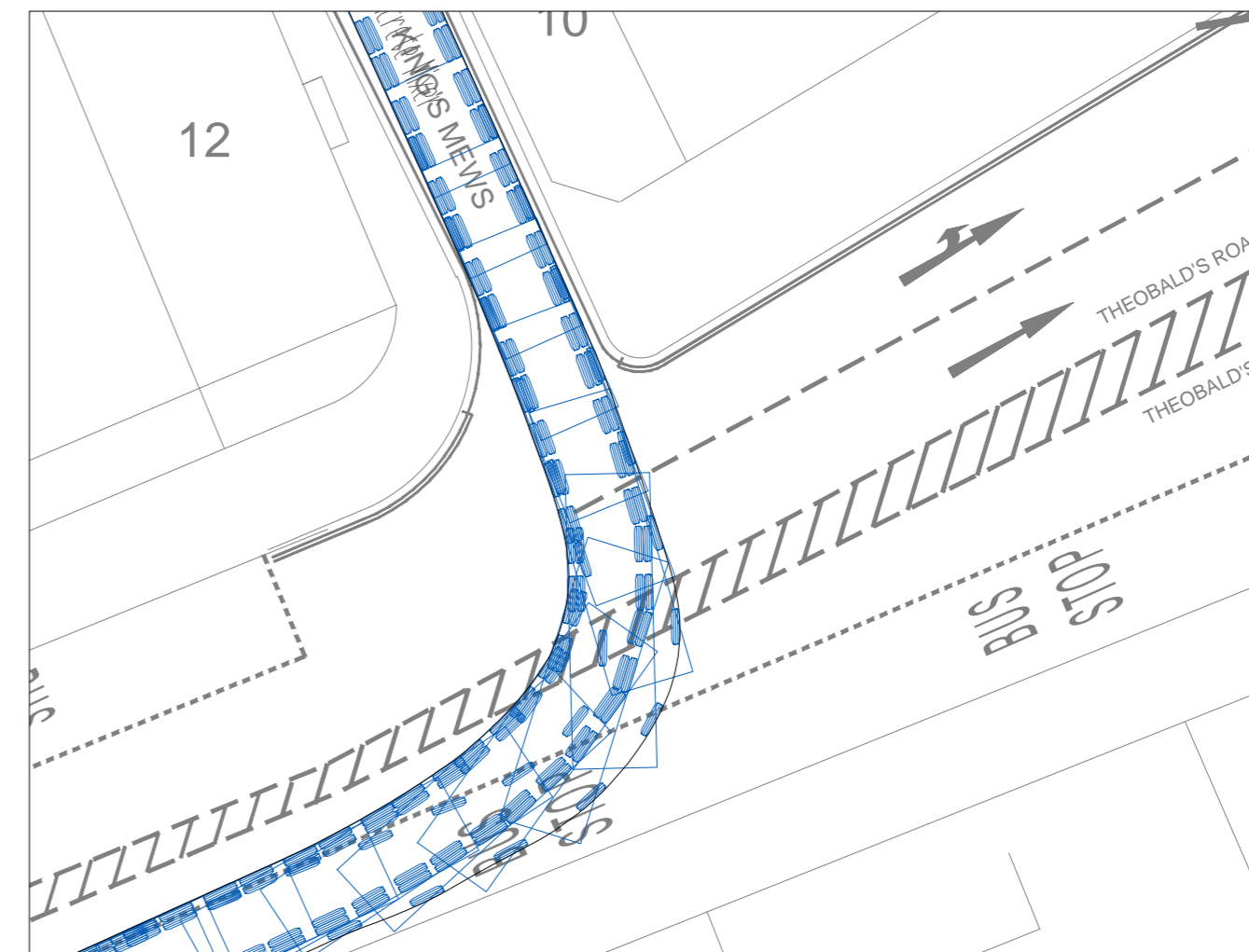
VEHICLE REVERSING ONTO KINGS MEWS FROM THEOBALD'S ROAD EASTBOUND



VEHICLE REVERSING ONTO KINGS MEWS FROM THEOBALD'S ROAD WESTBOUND



VEHICLE EXITING KINGS MEWS ONTO THEOBALD'S ROAD EASTBOUND (IN FORWARD GEAR)



VEHICLE EXITING KINGS MEWS ONTO THEOBALD'S ROAD WESTBOUND (IN FORWARD GEAR)

-10mm 0 10mm

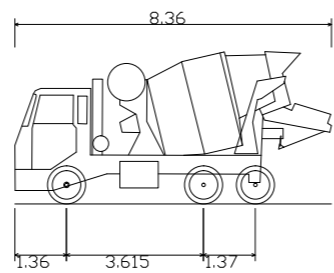
Based upon the Ordnance Survey Map with the permission of the Controller of H.M. Stationary Office @ Crown Copyright Contract No. 100048330

REV	DR	CH	PA	DATE

NOTES

DRAWING KEY

- FORWARD MANOEUVRE
- REVERSE MANOEUVRE



Concrete Mixer  
 Overall Length 8.360m  
 Overall Width 2.390m  
 Overall Body Height 4.027m  
 Min Body Ground Clearance 0.358m  
 Max Track Width 2.413m  
 Lock to Lock Time 6.00s  
 Kerb to Kerb Turning Radius 8.210m

KINGS MEWS, LONDON

VEHICLE SWEEP PATH ANALYSIS

DRAWN BY	CHECKED BY	PASSED BY	DATE	SCALES @ A2 SIZE	ISSUE STATUS
JLD	NRF	GP	01-07-16	1:500	PRELIMINARY

WC1 PROJECTS LTD



1 BLENHEIM COURT, BEAUFORT OFFICE PARK, WOODLANDS, BRADLEY STOKE, BRISTOL, BS32 4NE  
 TEL: 0845 600 6668 FAX: 01454 410389  
 enquiries@matrixlp.co.uk www.matrixlp.co.uk  
 Also at: Bedford, Cardiff, London & Sheffield

DRAWING NUMBER	REV.
LCN5007-M-002	-

CAD FILE NAME : LCN5007-M