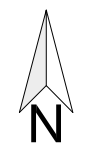
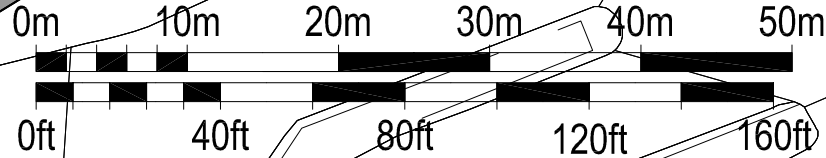
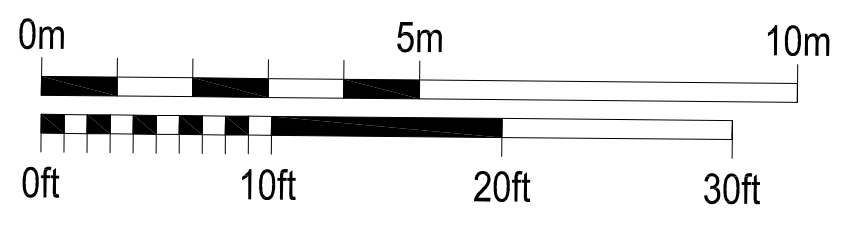
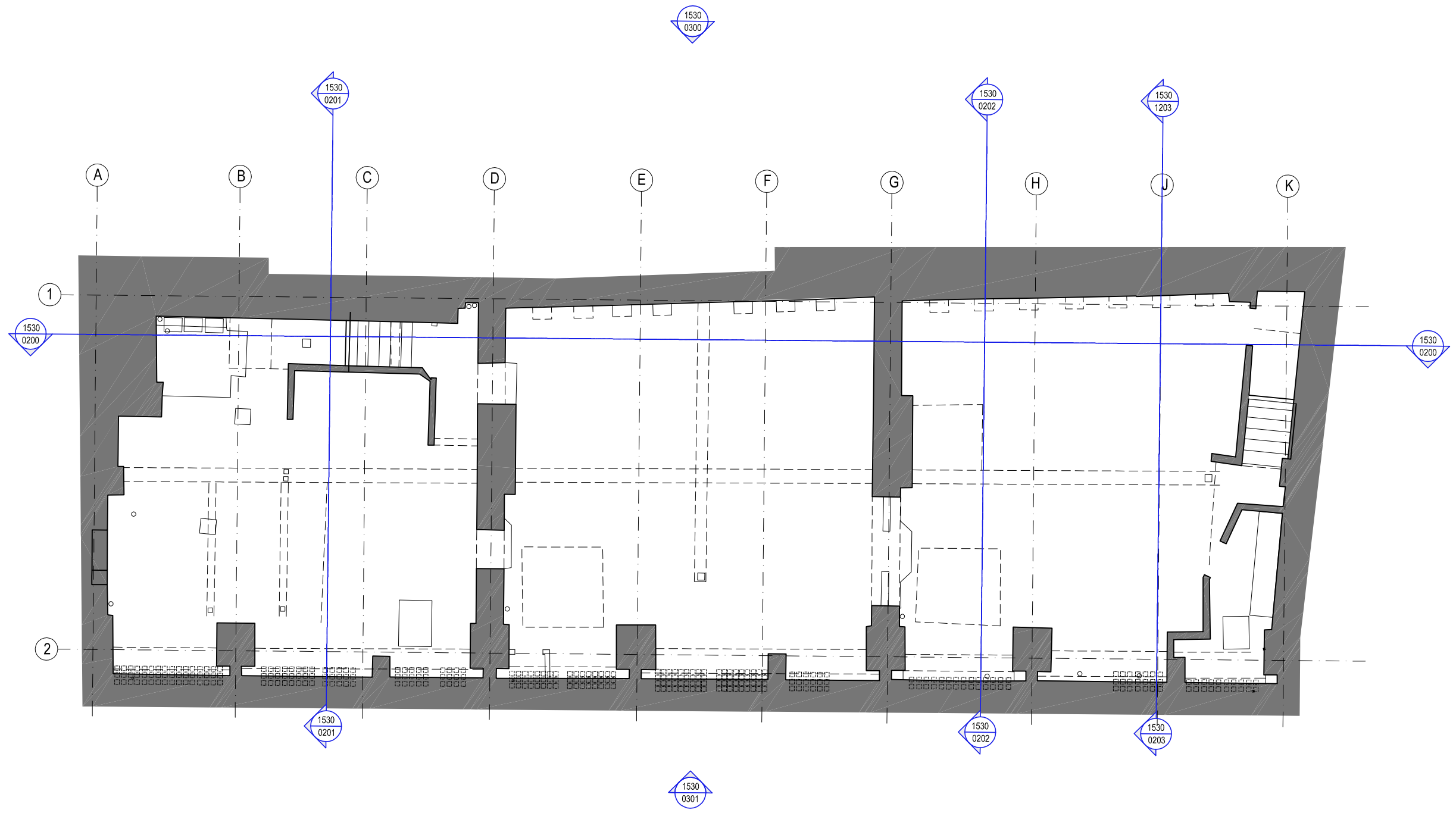


Do not scale from this drawing, except for town planning purposes.  
 Work to figured dimensions only.  
 This drawing is the property of Brimelow McSweeney Architects and copyright is reserved by them.  
 This drawing is issued on condition that it is not copied, used or disclosed by or to any unauthorised person without the prior written consent of Brimelow McSweeney Architects.  
 The areas on the drawing have been measured directly from a CAD drawing and have no tolerances added or subtracted.  
 The areas have been calculated in accordance with the Code of Measuring Practice, 6th Edition (2007) using the stated options NIA, GIA, GEA. They are approximate and relate to the likely areas of the building at the current state of the design. Any decisions to be made on the basis of these predictions, whether as to project viability, pre-letting, lease agreements and the like, should make allowance for the following:  
 - Design development  
 - Accurate site survey, site levels and dimensions need to be fully evaluated  
 - Allowance for construction methods and building tolerances.  
 - Local authority consents  
 rev date drawn by chkd description  
 / 13.06.16 AB SE ISSUED FOR PLANNING



status		
<b>FOR PLANNING</b>		
<b>BRIMELOW McSWEENEY ARCHITECTS</b> <small>28 Great Queen Street, Covent Garden, London WC2B 5EJ.        tel: 020 7831 7835 - fax: 020 7831 7839 - email: admin@bm-architects.co.uk</small>		
<small>project</small> <b>9-13 Grape Street,        London, WC2H</b>		
<small>file</small> <b>Existing Site Plan</b>		
<small>scale</small>	<small>date</small>	<small>drawn</small>
1:500@A3	09-06-16	AB
<small>drawing no.</small>	<small>revision</small>	
1530-0001	.	

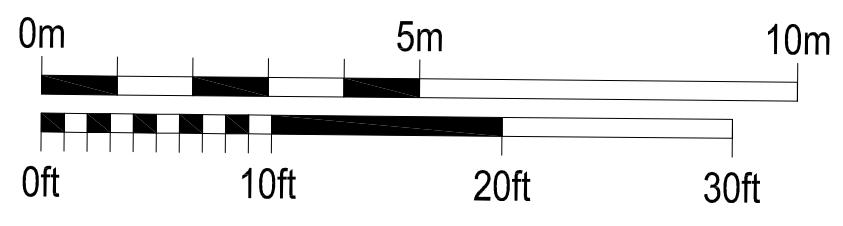
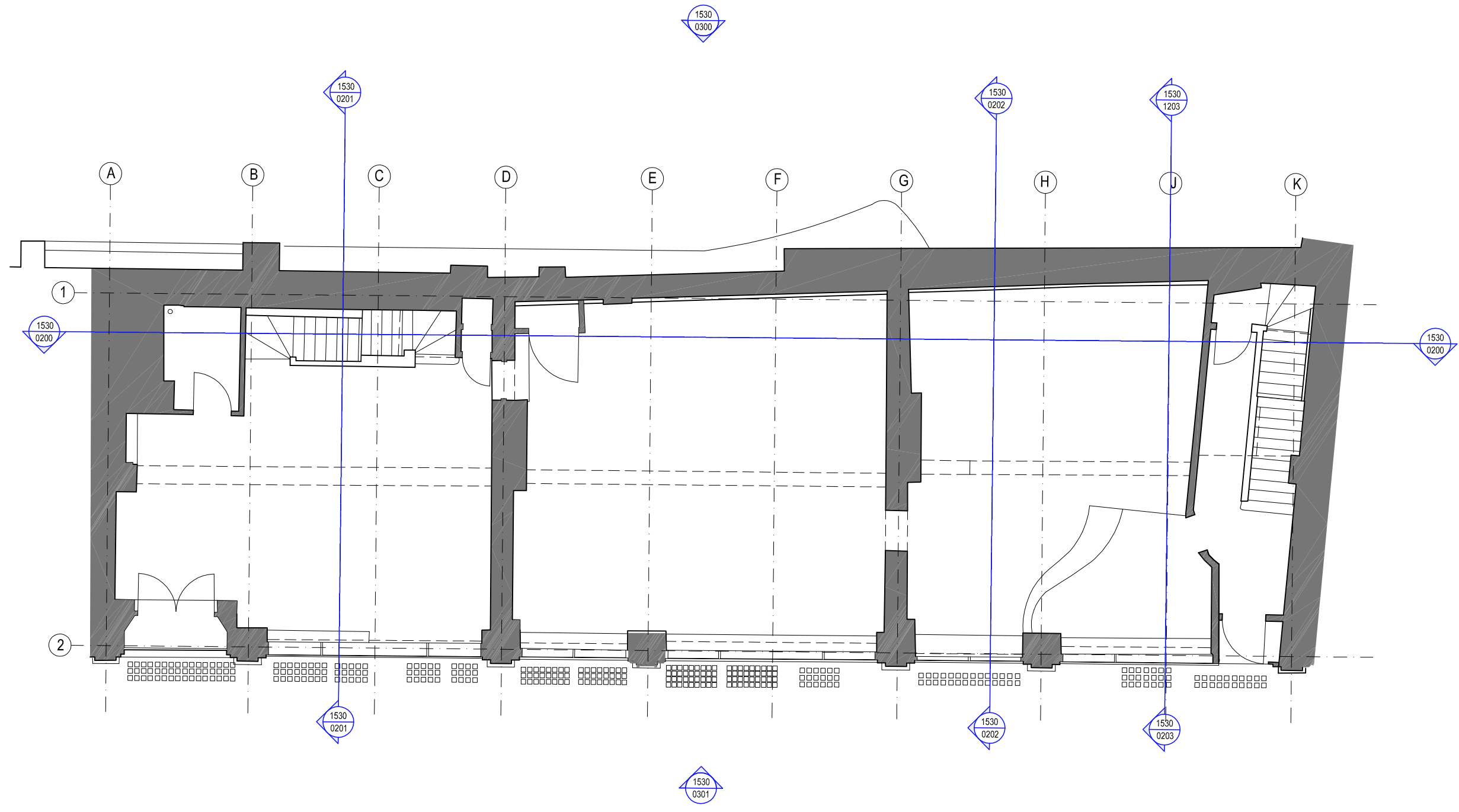
Do not scale from this drawing, except for town planning purposes.  
 Work to figured dimensions only.  
 This drawing is the property of Brimelow McSweeney Architects and copyright is reserved by them.  
 This drawing is issued on condition that it is not copied, used or disclosed by or to any unauthorised person without the prior written consent of Brimelow McSweeney Architects.  
 The areas on the drawing have been measured directly from a CAD drawing and have no tolerances added or subtracted.  
 The areas have been calculated in accordance with the Code of Measuring Practice, 6th Edition (2007) using the stated options N/A, GIA, GEA. They are approximate and relate to the likely areas of the building at the current state of the design. Any decisions to be made on the basis of these predictions, whether as to project viability, pre-letting, lease agreements and the like, should make allowance for the following:  
 - Design development  
 - Accurate site survey, site levels and dimensions need to be fully evaluated  
 - Allowance for construction methods and building tolerances.  
 - Local authority consents  
 rev date drawn by chkd description  
 / 13.06.16 AB SE ISSUED FOR PLANNING



status		
FOR PLANNING		
BRIMELOW McSWEENEY ARCHITECTS		
<small>26 Great Queen Street, Covent Garden, London WC2B 5EJ.          tel: 020 7831 7835 - fax: 020 7831 7839 - email: admin@bm-architects.co.uk</small>		
project		
9-13 Grape Street, London, WC2H		
file		
Existing Basement Plan		
scale	date	drawn
1:100@A3	14-03-16	AB
drawing no.	revision	
1530-0100	.	

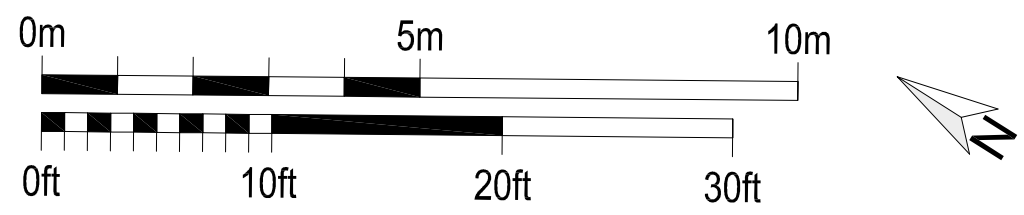
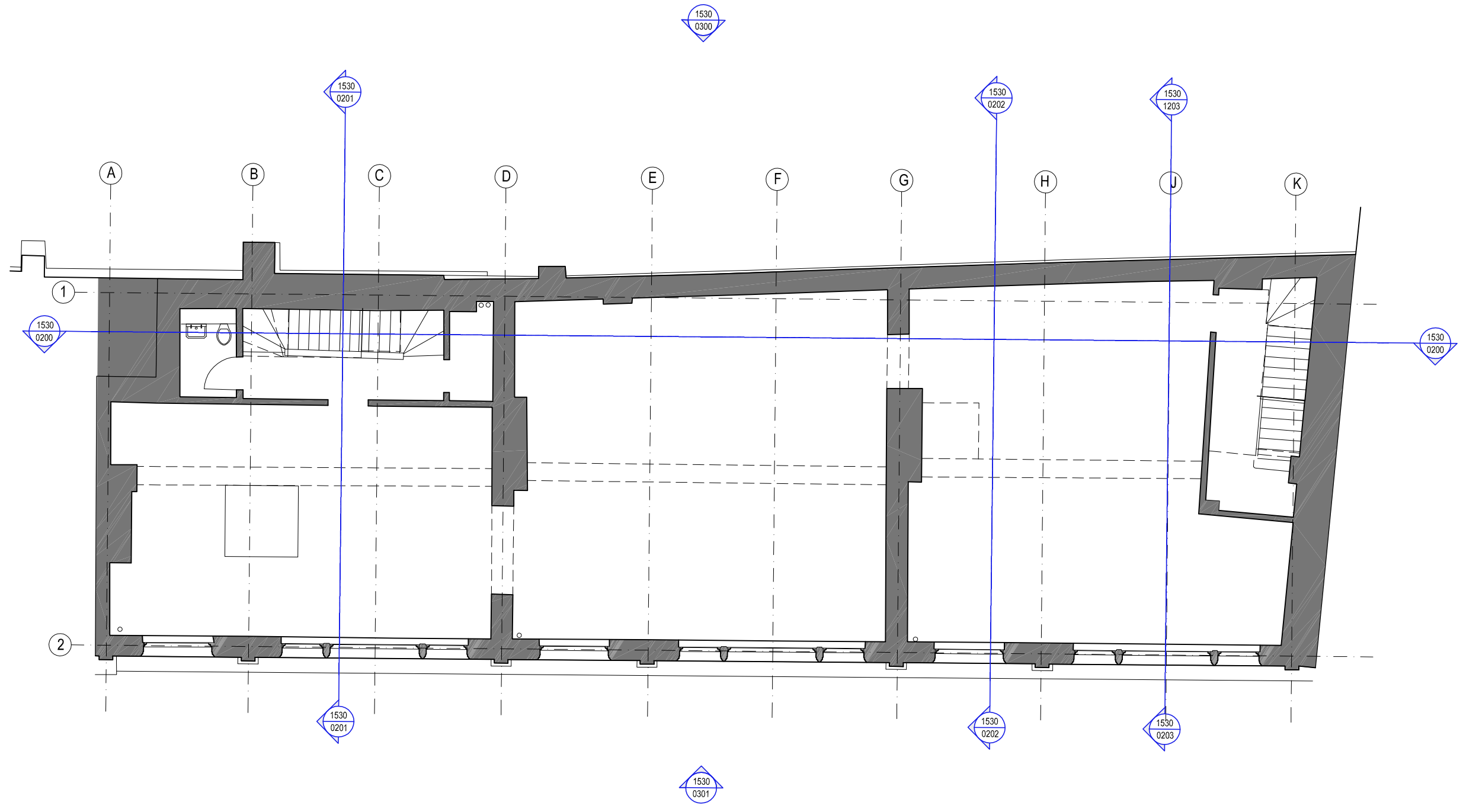


Do not scale from this drawing, except for town planning purposes.  
 Work to figured dimensions only.  
 This drawing is the property of Brimelow McSweeney Architects and copyright is reserved by them.  
 This drawing is issued on condition that it is not copied, used or disclosed by or to any unauthorised person without the prior written consent of Brimelow McSweeney Architects.  
 The areas on the drawing have been measured directly from a CAD drawing and have no tolerances added or subtracted.  
 The areas have been calculated in accordance with the Code of Measuring Practice, 6th Edition (2007) using the stated options N/A, GIA, GEA. They are approximate and relate to the likely areas of the building at the current state of the design. Any decisions to be made on the basis of these predictions, whether as to project viability, pre-letting, lease agreements and the like, should make allowance for the following:  
 - Design development  
 - Accurate site survey, site levels and dimensions need to be fully evaluated  
 - Allowance for construction methods and building tolerances.  
 - Local authority consents  
 rev date drawn by chkd description  
 / 13.06.16 AB SE ISSUED FOR PLANNING



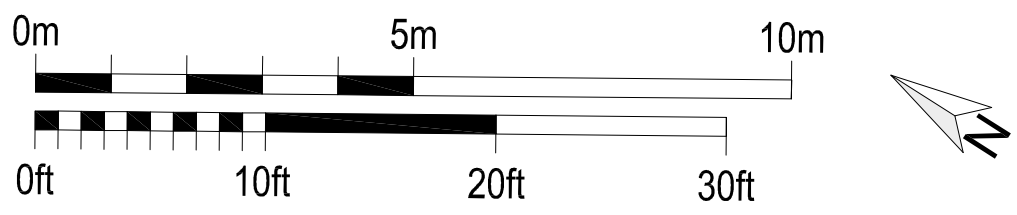
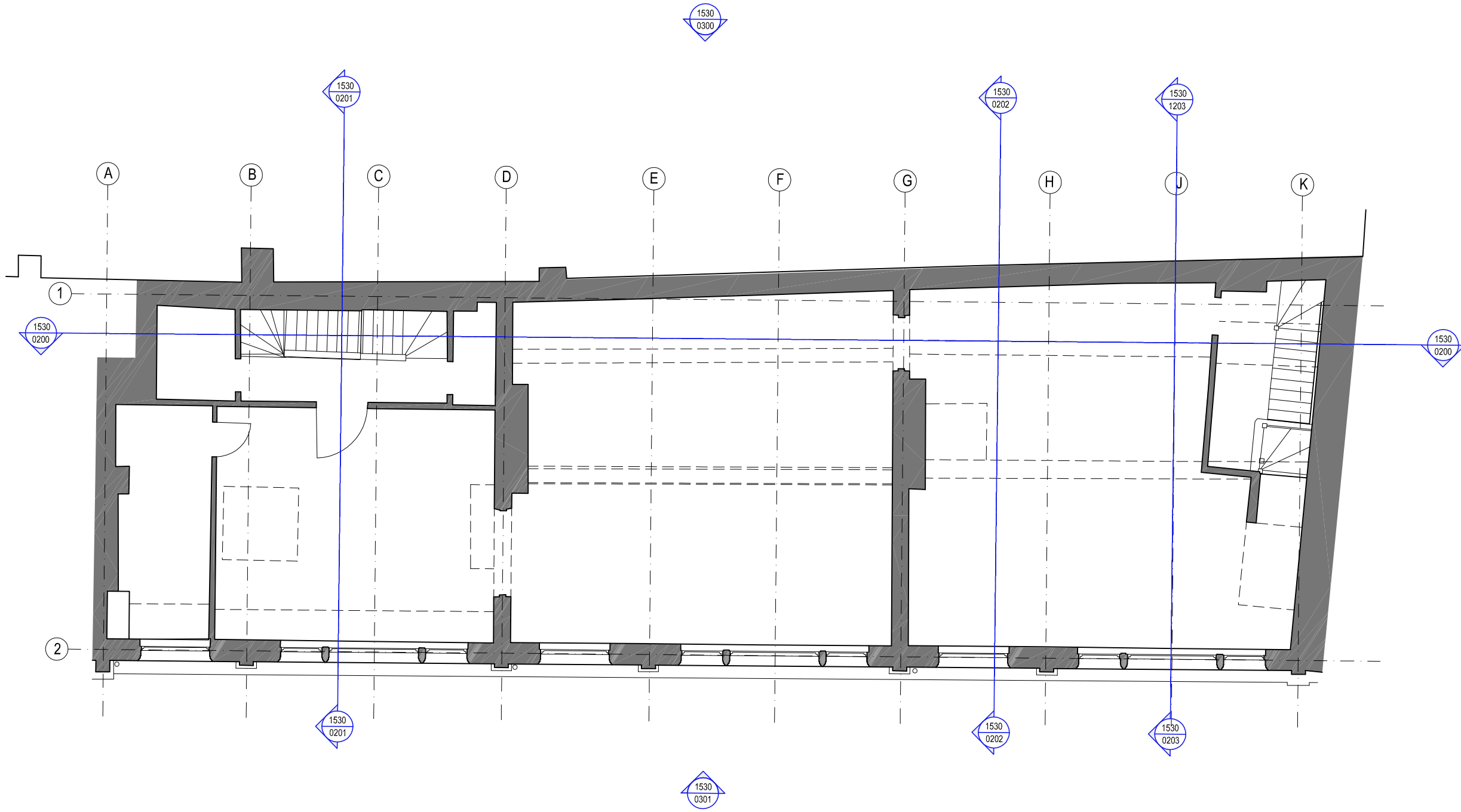
status		
<b>FOR PLANNING</b>		
<b>BRIMELOW          McSWEENEY          ARCHITECTS</b>		
<small>26 Great Queen Street, Covent Garden, London WC2B 5EJ.          tel: 020 7831 7835 - fax: 020 7831 7839 - email: admin@bm-architects.co.uk</small>		
<small>project</small> <b>9-13 Grape Street,          London, WC2H</b>		
<small>file</small> <b>Existing Ground Floor Plan</b>		
<small>scale</small> <b>1:100@A3</b>	<small>date</small> <b>14-03-16</b>	<small>drawn</small> <b>AB</b>
<small>drawing no.</small> <b>1530-0101</b>	<small>revision</small> .	

Do not scale from this drawing, except for town planning purposes.  
 Work to figured dimensions only.  
 This drawing is the property of Brimelow McSweeney Architects and copyright is reserved by them.  
 This drawing is issued on condition that it is not copied, used or disclosed by or to any unauthorised person without the prior written consent of Brimelow McSweeney Architects.  
 The areas on the drawing have been measured directly from a CAD drawing and have no tolerances added or subtracted.  
 The areas have been calculated in accordance with the Code of Measuring Practice, 6th Edition (2007) using the stated options NIA, GIA, GEA. They are approximate and relate to the likely areas of the building at the current state of the design. Any decisions to be made on the basis of these predictions, whether as to project viability, pre-letting, lease agreements and the like, should make allowance for the following:  
 - Design development  
 - Accurate site survey, site levels and dimensions need to be fully evaluated  
 - Allowance for construction methods and building tolerances.  
 - Local authority consents  
 rev date drawn by chkd description  
 / 13.06.16 AB SE ISSUED FOR PLANNING



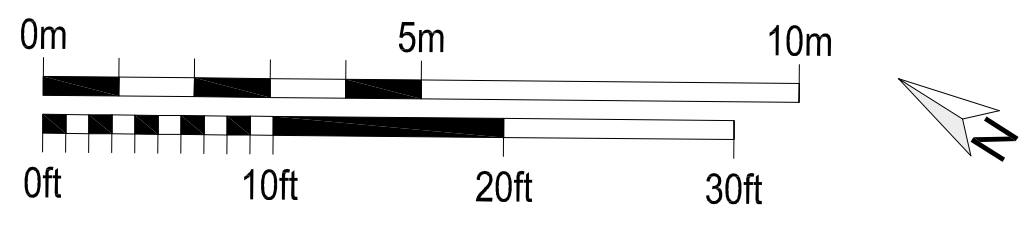
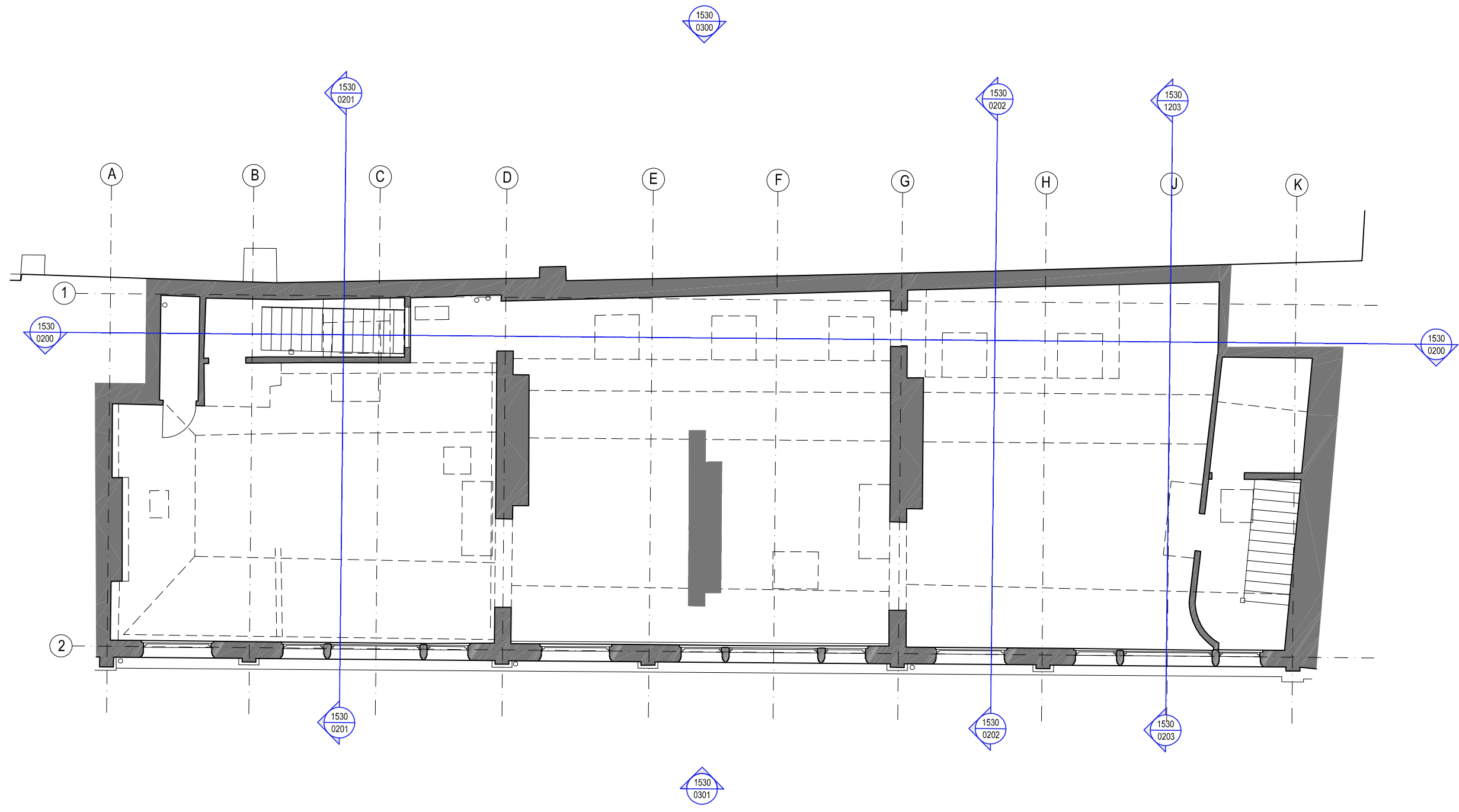
status		
<b>FOR PLANNING</b>		
<b>BRIMELOW McSWEENEY ARCHITECTS</b> <small>26 Great Queen Street, Covent Garden, London WC2B 5EJ.          tel: 020 7831 7835 - fax: 020 7831 7839 - email: admin@bm-architects.co.uk</small>		
<small>project</small> <b>9-13 Grape Street,          London, WC2H</b>		
<small>file</small> <b>Existing First Floor Plan</b>		
<small>scale</small>	<small>date</small>	<small>drawn</small>
1:100@A3	14-03-16	AB
<small>drawing no.</small>	<small>revision</small>	
<b>1530-0102</b>	.	

Do not scale from this drawing, except for town planning purposes.  
 Work to figured dimensions only.  
 This drawing is the property of Brimelow McSweeney Architects and copyright is reserved by them.  
 This drawing is issued on condition that it is not copied, used or disclosed by or to any unauthorised person without the prior written consent of Brimelow McSweeney Architects.  
 The areas on the drawing have been measured directly from a CAD drawing and have no tolerances added or subtracted.  
 The areas have been calculated in accordance with the Code of Measuring Practice, 6th Edition (2007) using the stated options N/A, GIA, GEA. They are approximate and relate to the likely areas of the building at the current state of the design. Any decisions to be made on the basis of these predictions, whether as to project viability, pre-letting, lease agreements and the like, should make allowance for the following:  
 - Design development  
 - Accurate site survey, site levels and dimensions need to be fully evaluated  
 - Allowance for construction methods and building tolerances.  
 - Local authority consents  
 rev date drawn by chkd description  
 / 13.06.16 AB SE ISSUED FOR PLANNING



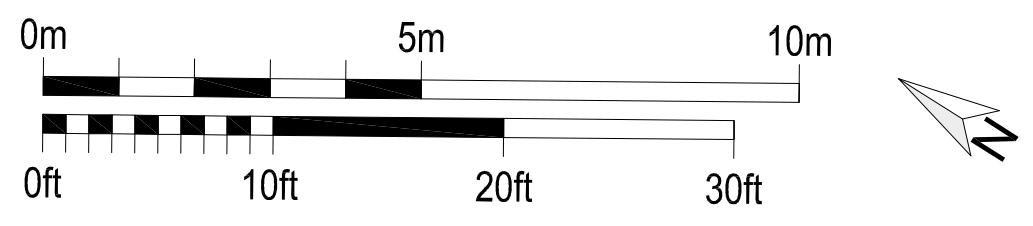
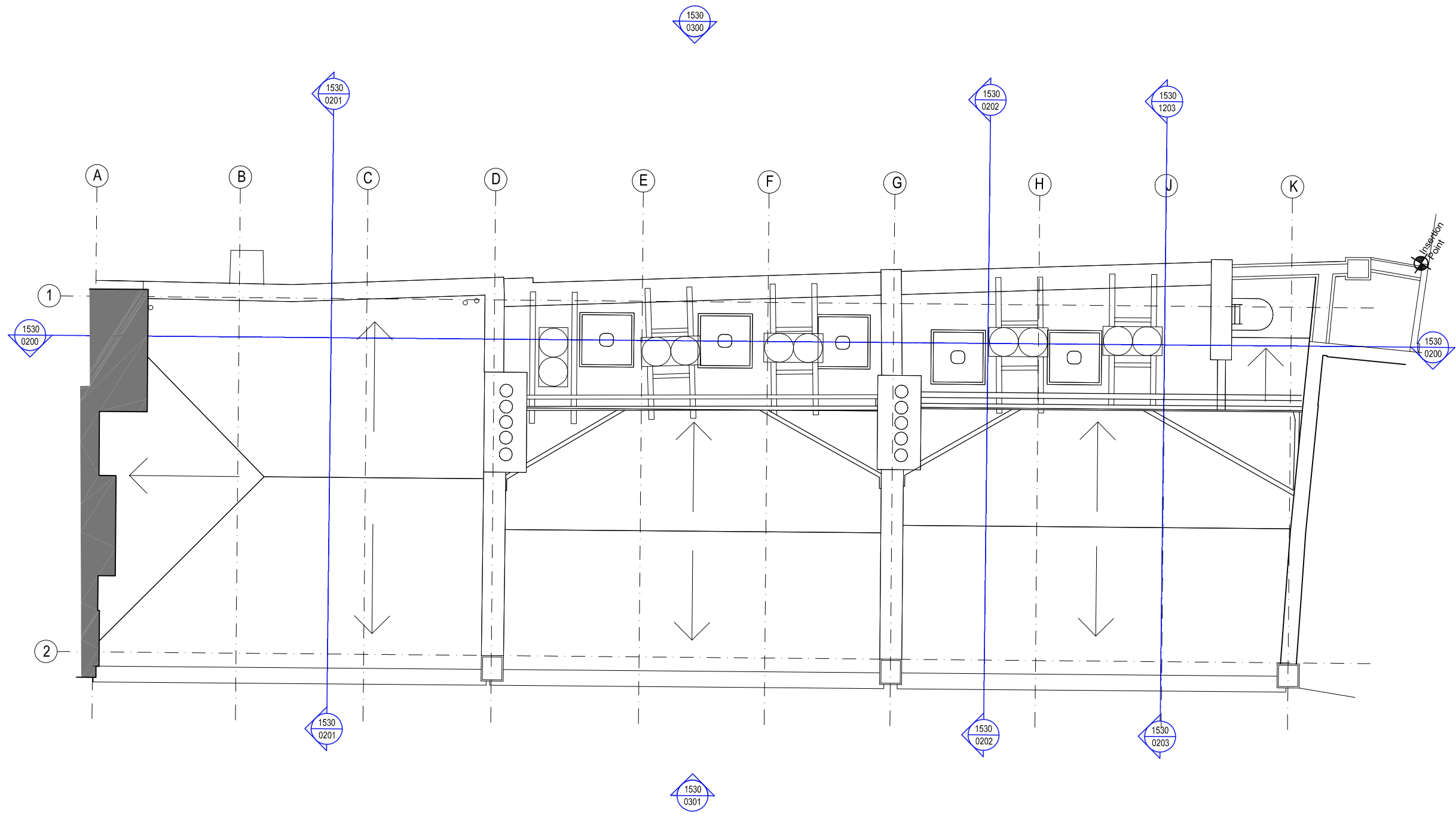
status		
<b>FOR PLANNING</b>		
<b>BRIMELOW          McSWEENEY          ARCHITECTS</b> 		
<small>26 Great Queen Street, Covent Garden, London WC2B 5EL.          tel: 020 7831 7835 - fax: 020 7831 7839 - email: admin@bm-architects.co.uk</small>		
project		
9-13 Grape Street, London, WC2H		
file		
Existing Second Floor Plan		
scale	date	drawn
1:100@A3	14-03-16	AB
drawing no.	revision	
1530-0103		

Do not scale from this drawing, except for town planning purposes.  
 Work to figured dimensions only.  
 This drawing is the property of Brimelow McSweeney Architects and copyright is reserved by them.  
 This drawing is issued on condition that it is not copied, used or disclosed by or to any unauthorised person without the prior written consent of Brimelow McSweeney Architects.  
 The areas on the drawing have been measured directly from a CAD drawing and have no tolerances added or subtracted.  
 The areas have been calculated in accordance with the Code of Measuring Practice, 6th Edition (2007) using the stated options N/A, GIA, GEA. They are approximate and relate to the likely areas of the building at the current state of the design. Any decisions to be made on the basis of these predictions, whether as to project viability, pre-letting, lease agreements and the like, should make allowance for the following:  
 - Design development  
 - Accurate site survey, site levels and dimensions need to be fully evaluated  
 - Allowance for construction methods and building tolerances.  
 - Local authority consents  
 rev date drawn by chkd description  
 / 13.06.16 AB SE ISSUED FOR PLANNING



status		
<b>FOR PLANNING</b>		
<b>BRIMELOW McSWEENEY ARCHITECTS</b>		
<small>26 Great Queen Street, Covent Garden, London WC2B 5EJ. tel: 020 7831 7835 - fax: 020 7831 7839 - email: admin@bm-architects.co.uk</small>		
project		
9-13 Grape Street, London, WC2H		
file		
Existing Third Floor Plan		
scale	date	drawn
1:100@A3	14-03-16	AB
drawing no.	revision	
1530-0104	.	

Do not scale from this drawing, except for town planning purposes.  
 Work to figured dimensions only.  
 This drawing is the property of Brimelow McSweeney Architects and copyright is reserved by them.  
 This drawing is issued on condition that it is not copied, used or disclosed by or to any unauthorised person without the prior written consent of Brimelow McSweeney Architects.  
 The areas on the drawing have been measured directly from a CAD drawing and have no tolerances added or subtracted.  
 The areas have been calculated in accordance with the Code of Measuring Practice, 6th Edition (2007) using the stated options N/A, GIA, GEA. They are approximate and relate to the likely areas of the building at the current state of the design. Any decisions to be made on the basis of these predictions, whether as to project viability, pre-letting, lease agreements and the like, should make allowance for the following:  
 - Design development  
 - Accurate site survey, site levels and dimensions need to be fully evaluated  
 - Allowance for construction methods and building tolerances.  
 - Local authority consents  
 rev date drawn by chkd description  
 / 13.06.16 AB SE ISSUED FOR PLANNING



status		
<b>FOR PLANNING</b>		
<b>BRIMELOW          McSWEENEY          ARCHITECTS</b>		
<small>26 Great Queen Street, Covent Garden, London WC2B 5EJ.          tel: 020 7831 7835 - fax: 020 7831 7839 - email: admin@bm-architects.co.uk</small>		
project		
9-13 Grape Street, London, WC2H		
file		
Existing Roof Plan		
scale	date	drawn
1:100@A3	07-06-16	AB
drawing no.	revision	
1530-0105		



Do not scale from this drawing, except for town planning purposes.  
 Work to figured dimensions only.  
 This drawing is the property of Brimelow McSweeney Architects and copyright is reserved by them.  
 This drawing is issued on condition that it is not copied, used or disclosed by or to any unauthorised person without the prior written consent of Brimelow McSweeney Architects.  
 The areas on the drawing have been measured directly from a CAD drawing and have no tolerances added or subtracted.  
 The areas have been calculated in accordance with the Code of Measuring Practice, 6th Edition (2007) using the stated options NIA, GIA, GEA. They are approximate and relate to the likely areas of the building at the current state of the design. Any decisions to be made on the basis of these predictions, whether as to project viability, pre-letting, lease agreements and the like, should make allowance for the following:  
 - Design development  
 - Accurate site survey, site levels and dimensions need to be fully evaluated  
 - Allowance for construction methods and building tolerances.  
 - Local authority consents  
 rev date drawn by chkd description  
 / 13.06.16 AB SE ISSUED FOR PLANNING

status		
<b>FOR PLANNING</b>		
<b>BRIMELOW          McSWEENEY          ARCHITECTS</b>		
<small>26 Great Queen Street, Covent Garden, London WC2B 5EJ.          tel: 020 7831 7835 - fax: 020 7831 7839 - email: admin@bm-architects.co.uk</small>		
project		
9-13 Grape Street, London, WC2H		
file		
Existing Section A-A		
scale	date	drawn
1:100@A3	17-03-16	AB
drawing no.	revision	
1530-0200		





Do not scale from this drawing, except for town planning purposes.  
 Work to figured dimensions only.  
 This drawing is the property of Brimelow McSweeney Architects and copyright is reserved by them.  
 This drawing is issued on condition that it is not copied, used or disclosed by or to any unauthorised person without the prior written consent of Brimelow McSweeney Architects.  
 The areas on the drawing have been measured directly from a CAD drawing and have no tolerances added or subtracted.  
 The areas have been calculated in accordance with the Code of Measuring Practice, 6th Edition (2007) using the stated options N/A, GIA, GEA. They are approximate and relate to the likely areas of the building at the current state of the design. Any decisions to be made on the basis of these predictions, whether as to project viability, pre-letting, lease agreements and the like, should make allowance for the following:  
 - Design development  
 - Accurate site survey, site levels and dimensions need to be fully evaluated  
 - Allowance for construction methods and building tolerances.  
 - Local authority consents

rev date drawn by chkd description  
 / 13.06.16 AB SE ISSUED FOR PLANNING

status		
<b>FOR PLANNING</b>		
<b>BRIMELOW          McSWEENEY          ARCHITECTS</b>		
<small>26 Great Queen Street, Covent Garden, London WC2B 5EJ.          tel: 020 7831 7835 - fax: 020 7831 7839 - email: admin@bm-architects.co.uk</small>		
project		
9-13 Grape Street, London, WC2H		
file		
Existing Section B-B		
scale	date	drawn
1:100@A3	17-03-16	AB
drawing no.	revision	
1530-0201		



Do not scale from this drawing, except for town planning purposes.  
 Work to figured dimensions only.  
 This drawing is the property of Brimelow McSweeney Architects and copyright is reserved by them.  
 This drawing is issued on condition that it is not copied, used or disclosed by or to any unauthorised person without the prior written consent of Brimelow McSweeney Architects.  
 The areas on the drawing have been measured directly from a CAD drawing and have no tolerances added or subtracted.  
 The areas have been calculated in accordance with the Code of Measuring Practice, 6th Edition (2007) using the stated options NIA, GIA, GEA. They are approximate and relate to the likely areas of the building at the current state of the design. Any decisions to be made on the basis of these predictions, whether as to project viability, pre-letting, lease agreements and the like, should make allowance for the following:  
 - Design development  
 - Accurate site survey, site levels and dimensions need to be fully evaluated  
 - Allowance for construction methods and building tolerances.  
 - Local authority consents

rev	date	drawn by	chkd	description
/	13.06.16	AB	SE	ISSUED FOR PLANNING

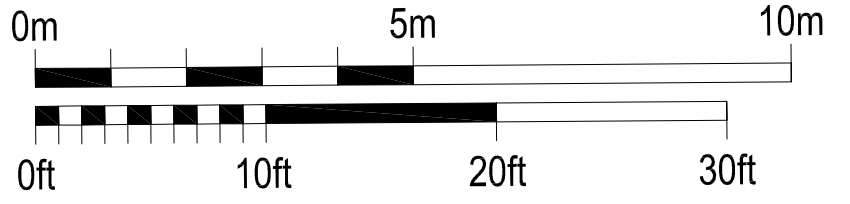
status		
<b>FOR PLANNING</b>		
<b>BRIMELOW McSWEENEY ARCHITECTS</b>		
<small>26 Great Queen Street, Covent Garden, London WC2B 5EL.        tel: 020 7831 7835 - fax: 020 7831 7839 - email: admin@bm-architects.co.uk</small>		
project		
9-13 Grape Street, London, WC2H		
file		
Existing Section C-C		
scale	date	drawn
1:100@A3	09-06-16	AB
drawing no.	revision	
1530-0202		



Do not scale from this drawing, except for town planning purposes.  
 Work to figured dimensions only.  
 This drawing is the property of Brimelow McSweeney Architects and copyright is reserved by them.  
 This drawing is issued on condition that it is not copied, used or disclosed by or to any unauthorised person without the prior written consent of Brimelow McSweeney Architects.  
 The areas on the drawing have been measured directly from a CAD drawing and have no tolerances added or subtracted.  
 The areas have been calculated in accordance with the Code of Measuring Practice, 6th Edition (2007) using the stated options NIA, GIA, GEA. They are approximate and relate to the likely areas of the building at the current state of the design. Any decisions to be made on the basis of these predictions, whether as to project viability, pre-letting, lease agreements and the like, should make allowance for the following:  
 - Design development  
 - Accurate site survey, site levels and dimensions need to be fully evaluated  
 - Allowance for construction methods and building tolerances.  
 - Local authority consents

rev	date	drawn by	chkd	description
/	13.06.16	AB	SE	ISSUED FOR PLANNING

status			FOR PLANNING
BRIMELOW McSWEENEY ARCHITECTS			
26 Great Queen Street, Covent Garden, London WC2B 5EJ. tel: 020 7831 7835 - fax: 020 7831 7839 - email: admin@bm-architects.co.uk			
project			9-13 Grape Street, London, WC2H
file			Existing Section D-D
scale	date	drawn	
1:100@A3	09-06-16	AB	
drawing no.	revision		
1530-0203			.

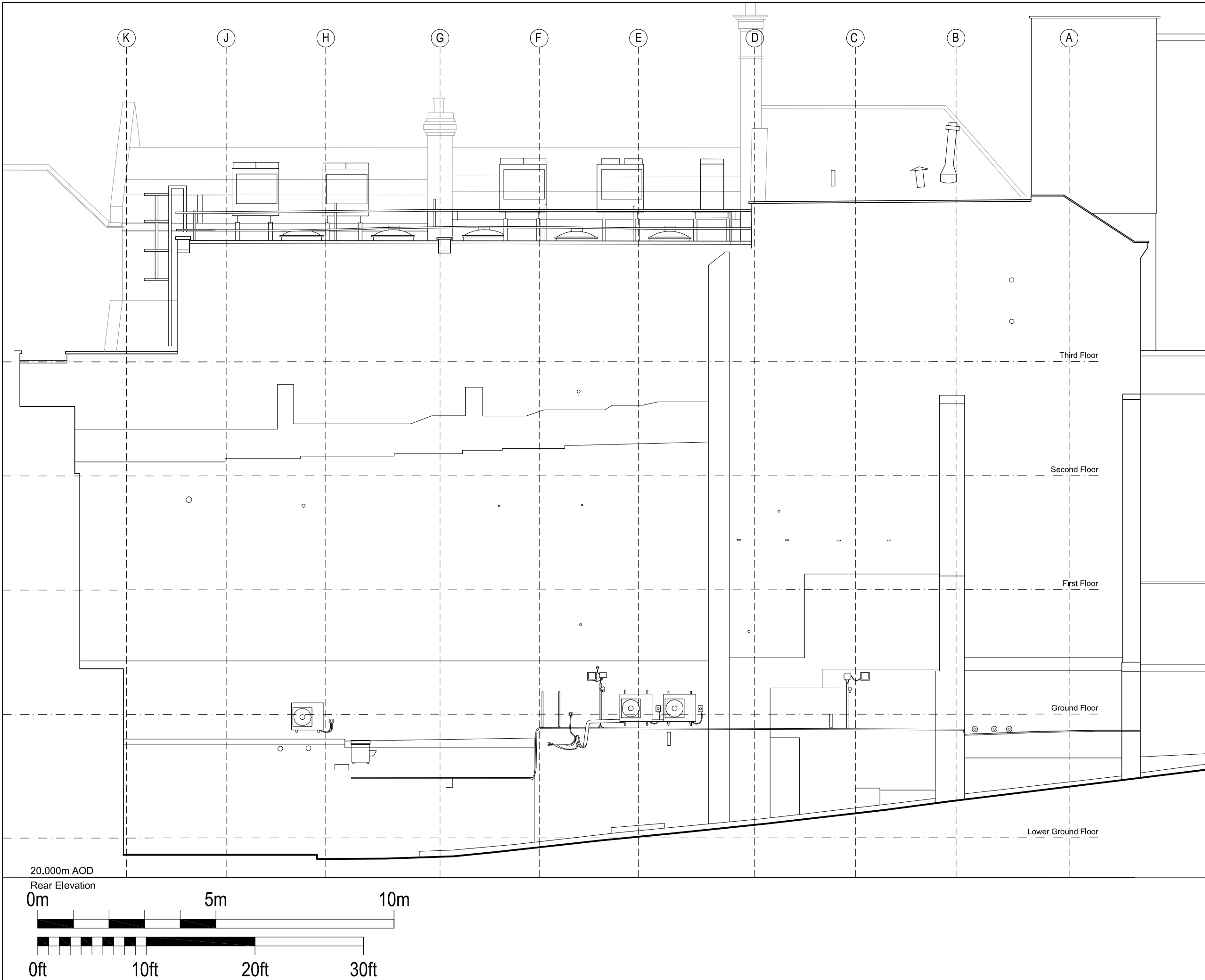


20.000m AOD  
Front Elevation

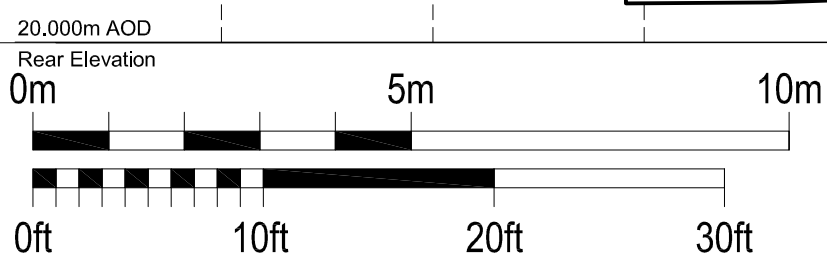
Do not scale from this drawing, except for town planning purposes.  
Work to figured dimensions only.  
This drawing is the property of Brimelow McSweeney Architects and copyright is reserved by them.  
This drawing is issued on condition that it is not copied, used or disclosed by or to any unauthorised person without the prior written consent of Brimelow McSweeney Architects.  
The areas on the drawing have been measured directly from a CAD drawing and have no tolerances added or subtracted.  
The areas have been calculated in accordance with the Code of Measuring Practice, 6th Edition (2007) using the stated options N/A, GIA, GEA. They are approximate and relate to the likely areas of the building at the current state of the design. Any decisions to be made on the basis of these predictions, whether as to project viability, pre-letting, lease agreements and the like, should make allowance for the following:  
- Design development  
- Accurate site survey, site levels and dimensions need to be fully evaluated  
- Allowance for construction methods and building tolerances.  
- Local authority consents

rev	date	drawn by	chkd	description
/	10.06.16	AB	SE	ISSUED FOR PLANNING

status			FOR PLANNING		
BRIMELOW McSWEENEY ARCHITECTS					
26 Great Queen Street, Covent Garden, London WC2B 5EL. tel: 020 7831 7835 - fax: 020 7831 7830 - email: admin@bm-architects.co.uk					
project			9-13 Grape Street, London, WC2H		
file			Existing Front Elevation		
scale			date		drawn
1:100@A3			17-03-16		AB
drawing no.			revision		
1530-0300			.		



Do not scale from this drawing, except for town planning purposes.  
 Work to figured dimensions only.  
 This drawing is the property of Brimelow McSweeney Architects and copyright is reserved by them.  
 This drawing is issued on condition that it is not copied, used or disclosed by or to any unauthorised person without the prior written consent of Brimelow McSweeney Architects.  
 The areas on the drawing have been measured directly from a CAD drawing and have no tolerances added or subtracted.  
 The areas have been calculated in accordance with the Code of Measuring Practice, 6th Edition (2007) using the stated options NIA, GIA, GEA. They are approximate and relate to the likely areas of the building at the current state of the design. Any decisions to be made on the basis of these predictions, whether as to project viability, pre-letting, lease agreements and the like, should make allowance for the following:  
 - Design development  
 - Accurate site survey, site levels and dimensions need to be fully evaluated  
 - Allowance for construction methods and building tolerances.  
 - Local authority consents  
 rev date drawn by chkd description  
 / 13.06.16 AB SE ISSUED FOR PLANNING



status		
<b>FOR PLANNING</b>		
<b>BRIMELOW McSWEENEY ARCHITECTS</b> <small>26 Great Queen Street, Covent Garden, London WC2B 5EJ.        tel: 020 7831 7835 - fax: 020 7831 7830 - email: admin@bm-architects.co.uk</small>		
		
project		
9-13 Grape Street, London, WC2H		
file		
Existing Rear Elevation		
scale	date	drawn
1:100@A3	17-03-16	AB
drawing no.	revision	
1530-0301		