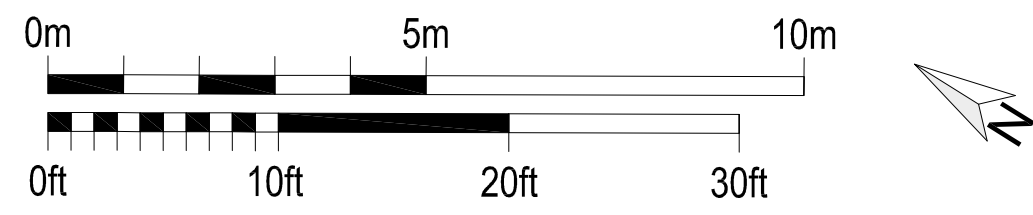
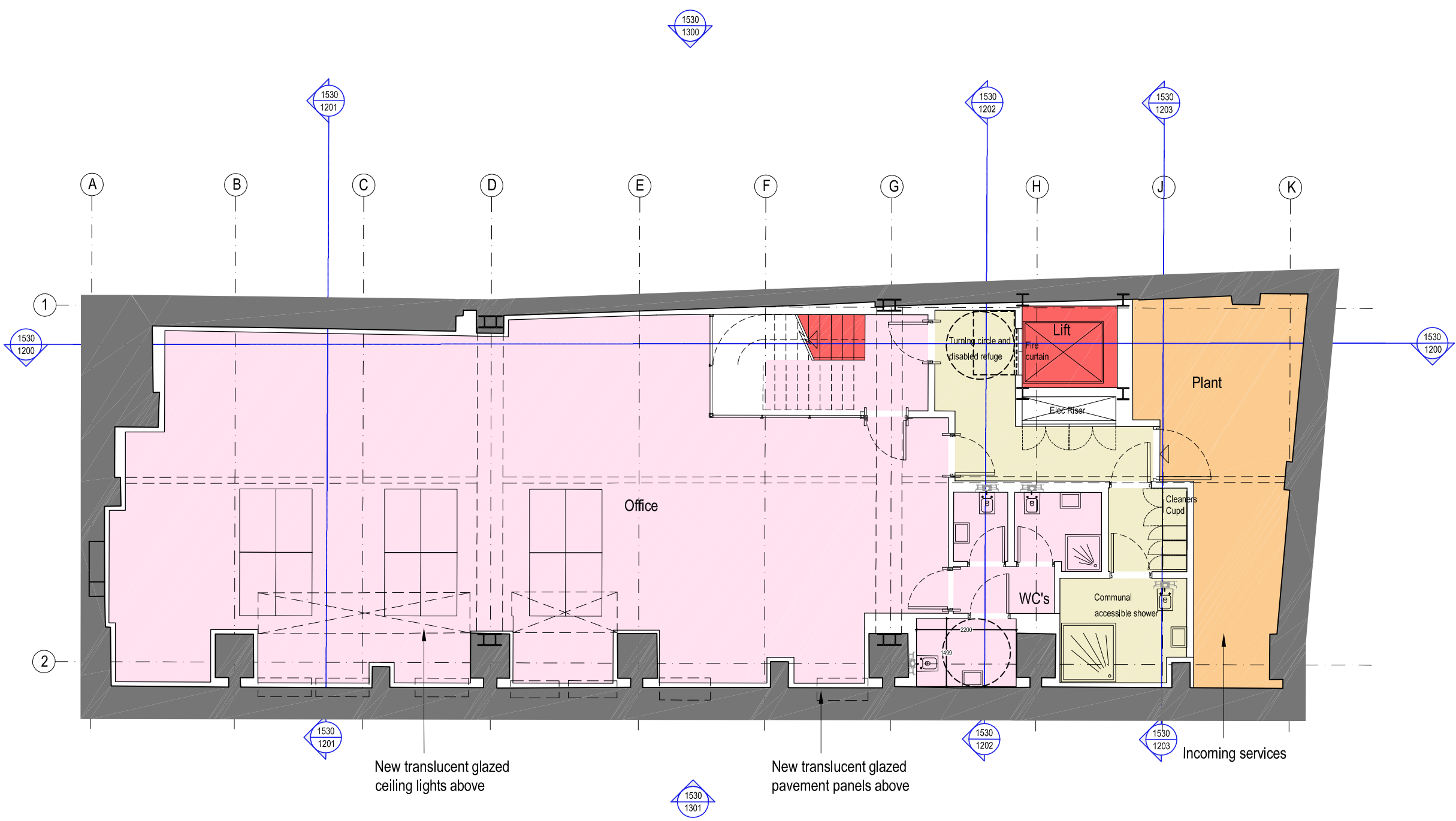


Do not scale from this drawing, except for town planning purposes.
 Work to figured dimensions only.
 This drawing is the property of Brimelow McSweeney Architects and copyright is reserved by them.
 This drawing is issued on condition that it is not copied, used or disclosed by or to any unauthorised person without the prior written consent of Brimelow McSweeney Architects.
 The areas on the drawing have been measured directly from a CAD drawing and have no tolerances added or subtracted.
 The areas have been calculated in accordance with the Code of Measuring Practice, 6th Edition (2007) using the stated options N/A, GIA, GEA. They are approximate and relate to the likely areas of the building at the current state of the design. Any decisions to be made on the basis of these predictions, whether as to project viability, pre-letting, lease agreements and the like, should make allowance for the following:
 - Design development
 - Accurate site survey, site levels and dimensions need to be fully evaluated
 - Allowance for construction methods and building tolerances.
 - Local authority consents

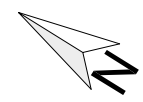
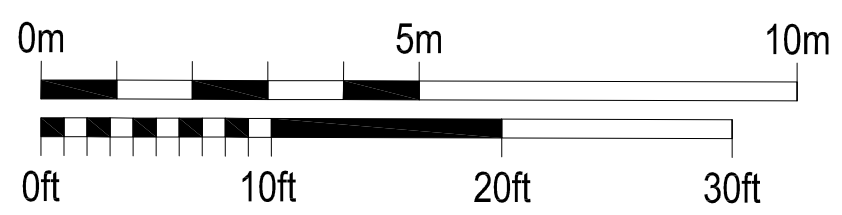
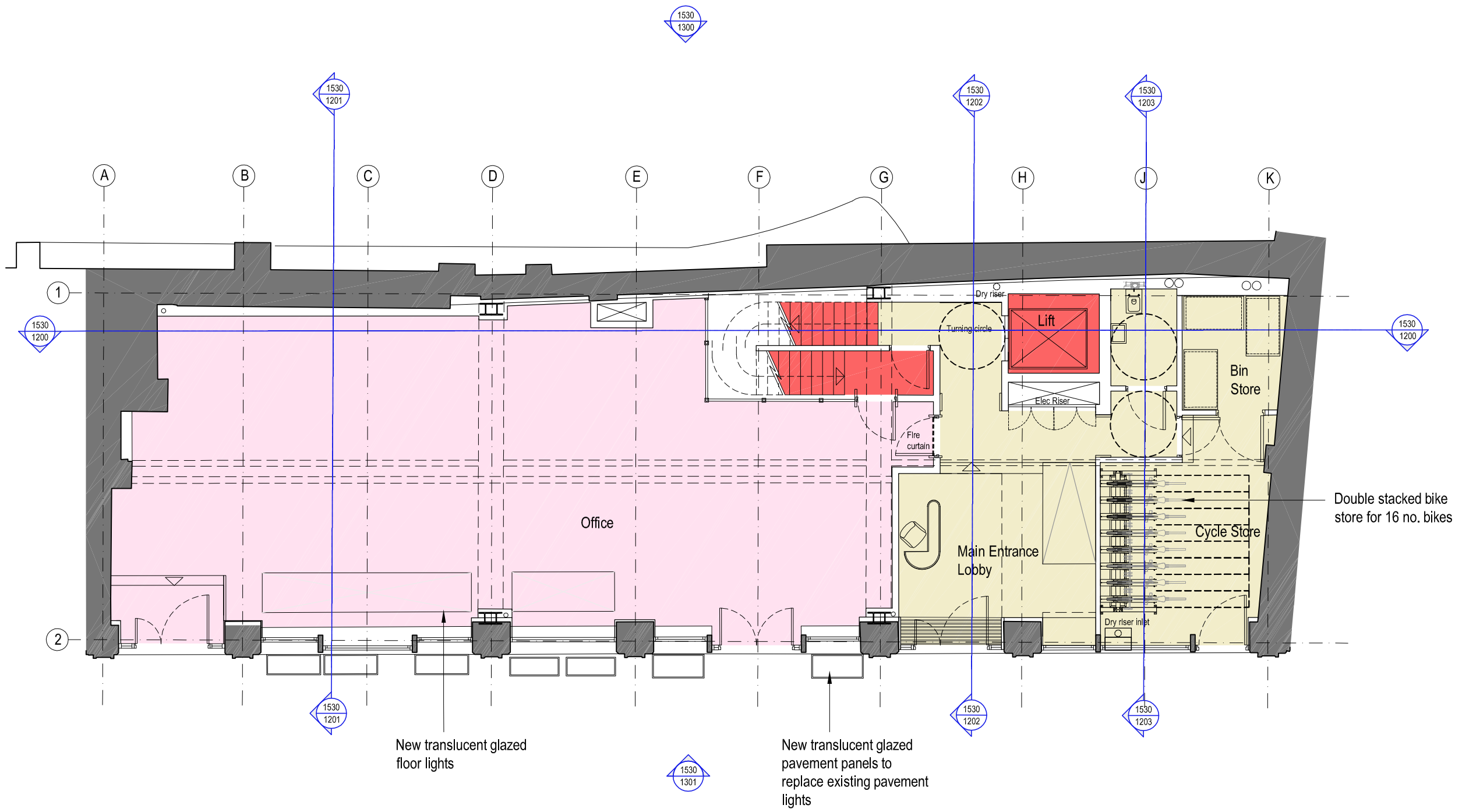
rev	date	drawn by	chkd	description
/	01.04.16	AB	SE	First Issue
A	05.04.16	AB	SE	Layouts adjusted
B	16.04.16	AB	SE	Layouts adjusted
C	23.05.16	AB	SE	Notes Added
D	02.06.16	AB	SE	Notes and Section Lines Updated
E	13.06.16	AB	SE	ISSUED FOR PLANNING



status		FOR PLANNING	
BRIMELOW McSWEENEY ARCHITECTS			
26 Great Queen Street, Covent Garden, London WC2B 5EJ. tel: 020 7831 7835 - fax: 020 7831 7839 - email: admin@bm-architects.co.uk			
project		9-13 Grape Street, London, WC2H	
file		Proposed Basement Plan	
scale	date	drawn	
1:100@A3	14-03-16	AB	
drawing no.			revision
1530-1100			E

Do not scale from this drawing, except for town planning purposes.
 Work to figured dimensions only.
 This drawing is the property of Brimelow McSweeney Architects and copyright is reserved by them.
 This drawing is issued on condition that it is not copied, used or disclosed by or to any unauthorised person without the prior written consent of Brimelow McSweeney Architects.
 The areas on the drawing have been measured directly from a CAD drawing and have no tolerances added or subtracted.
 The areas have been calculated in accordance with the Code of Measuring Practice, 6th Edition (2007) using the stated options NIA, GIA, GEA. They are approximate and relate to the likely areas of the building at the current state of the design. Any decisions to be made on the basis of these predictions, whether as to project viability, pre-letting, lease agreements and the like, should make allowance for the following:
 - Design development
 - Accurate site survey, site levels and dimensions need to be fully evaluated
 - Allowance for construction methods and building tolerances.
 - Local authority consents

rev	date	drawn by	chkd	description
/	01.04.16	AB	SE	First Issue
A	05.04.16	AB	SE	Layouts Adjusted
B	16.05.16	AB	SE	Window line and bike store adjusted
C	23.05.16	AB	SE	Window line and bike store adjusted
D	02.06.16	AB	SE	Notes and Section Lines Updated
E	13.06.16	AB	SE	ISSUED FOR PLANNING



status **FOR PLANNING**

BRIMELOW McSWEENEY ARCHITECTS 

26 Great Queen Street, Covent Garden, London WC2B 5EJ.
 tel: 020 7831 7835 - fax: 020 7831 7839 - email: admin@brim-architects.co.uk

project
 9-13 Grape Street,
 London, WC2H

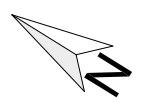
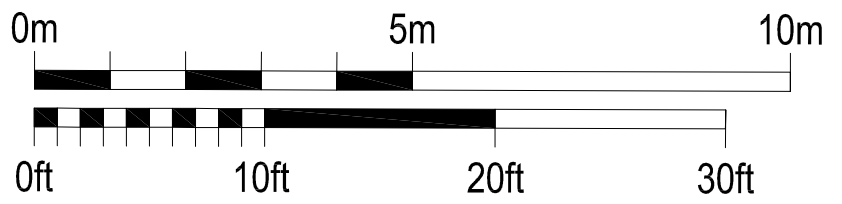
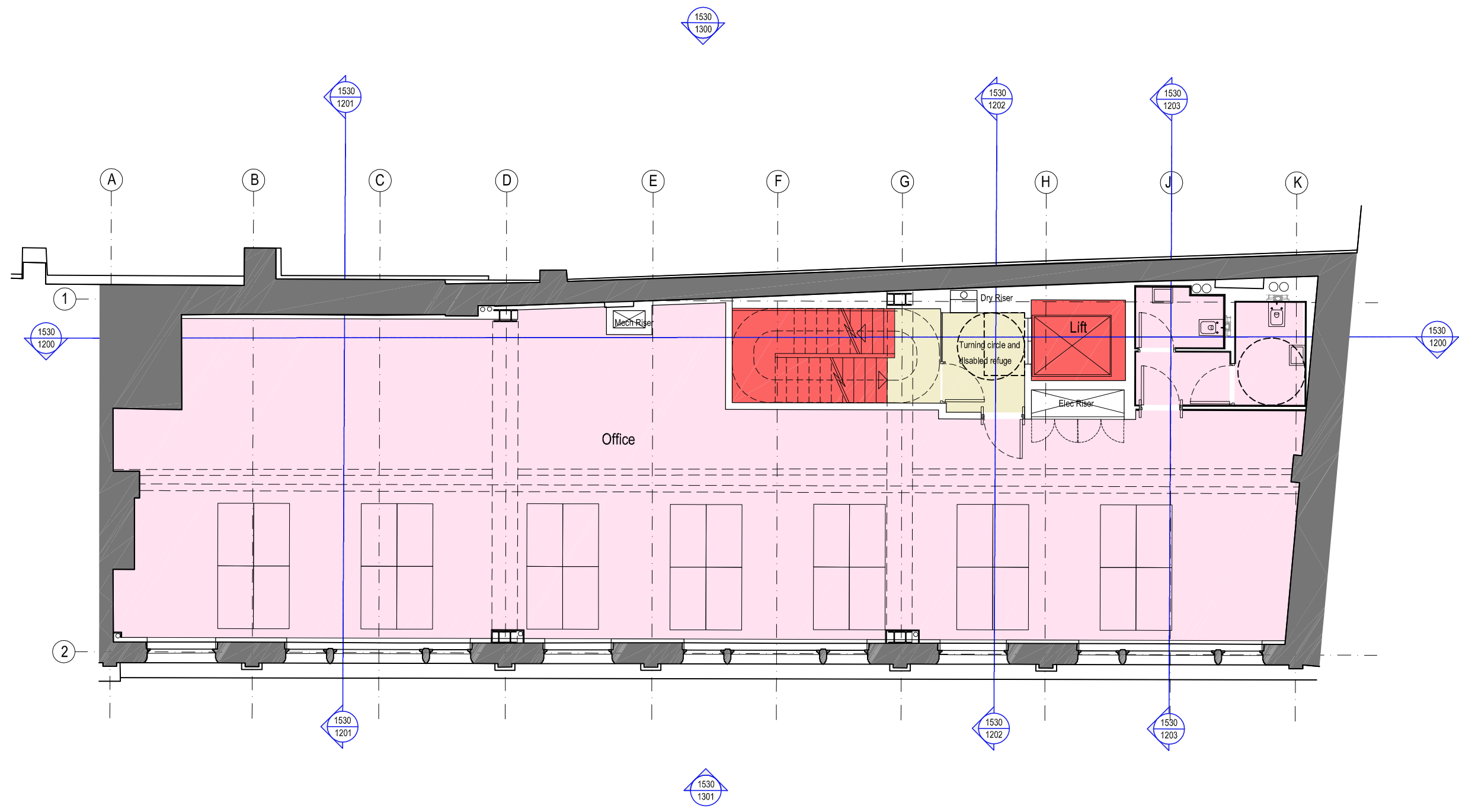
file
 Proposed Ground Floor Plan

scale	date	drawn
1:100@A3	14-03-16	AB

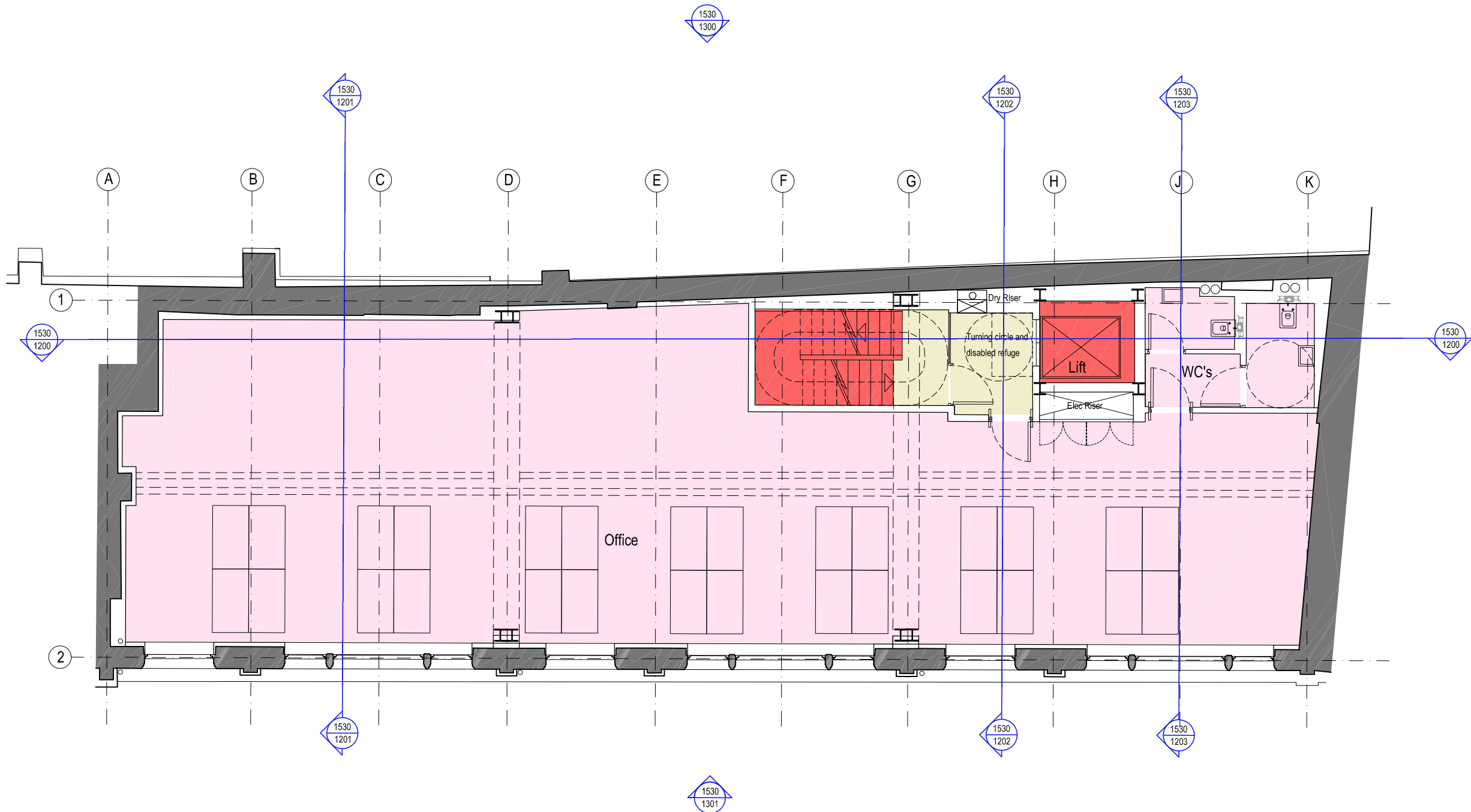
drawing no.	revision
1530-1101	E

Do not scale from this drawing, except for town planning purposes.
 Work to figured dimensions only.
 This drawing is the property of Brimelow McSweeney Architects and copyright is reserved by them.
 This drawing is issued on condition that it is not copied, used or disclosed by or to any unauthorised person without the prior written consent of Brimelow McSweeney Architects.
 The areas on the drawing have been measured directly from a CAD drawing and have no tolerances added or subtracted.
 The areas have been calculated in accordance with the Code of Measuring Practice, 6th Edition (2007) using the stated options NIA, GIA, GEA. They are approximate and relate to the likely areas of the building at the current state of the design. Any decisions to be made on the basis of these predictions, whether as to project viability, pre-letting, lease agreements and the like, should make allowance for the following:
 - Design development
 - Accurate site survey, site levels and dimensions need to be fully evaluated
 - Allowance for construction methods and building tolerances.
 - Local authority consents

rev	date	drawn by	chkd	description
/	01.04.16	AB	SE	First Issue
A	05.04.16	AB	SE	Layouts Adjusted
B	16.05.16	AB	SE	Layouts Adjusted
C	23.05.16	AB	SE	Notes Added
D	02.06.16	AB	SE	Notes and Section Lines Updated
E	13.06.16	AB	SE	ISSUED FOR PLANNING

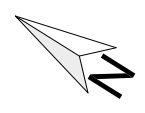
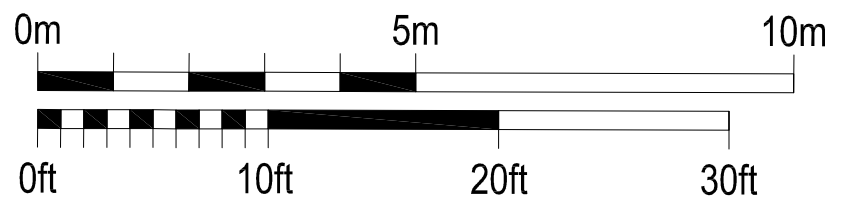


status		FOR PLANNING	
BRIMELOW McSWEENEY ARCHITECTS			
<small>26 Great Queen Street, Covent Garden, London WC2B 5EJ. tel: 020 7831 7835 - fax: 020 7831 7839 - email: admin@bm-architects.co.uk</small>			
project		9-13 Grape Street, London, WC2H	
file		Proposed First Floor Plan	
scale	date	drawn	
1:100@A3	14-03-16	AB	
drawing no.	revision		
1530-1102	E		



Do not scale from this drawing, except for town planning purposes.
 Work to figured dimensions only.
 This drawing is the property of Brimelow McSweeney Architects and copyright is reserved by them.
 This drawing is issued on condition that it is not copied, used or disclosed by or to any unauthorised person without the prior written consent of Brimelow McSweeney Architects.
 The areas on the drawing have been measured directly from a CAD drawing and have no tolerances added or subtracted.
 The areas have been calculated in accordance with the Code of Measuring Practice, 6th Edition (2007) using the stated options N/A, GIA, GEA. They are approximate and relate to the likely areas of the building at the current state of the design. Any decisions to be made on the basis of these predictions, whether as to project viability, pre-letting, lease agreements and the like, should make allowance for the following:
 - Design development
 - Accurate site survey, site levels and dimensions need to be fully evaluated
 - Allowance for construction methods and building tolerances.
 - Local authority consents

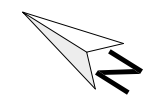
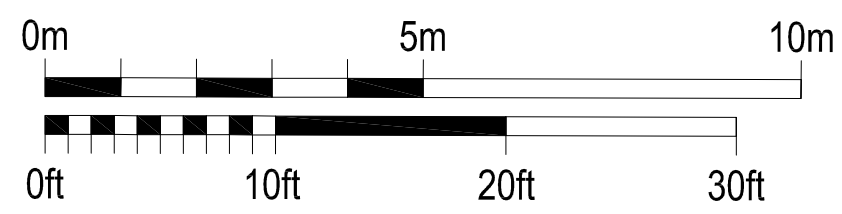
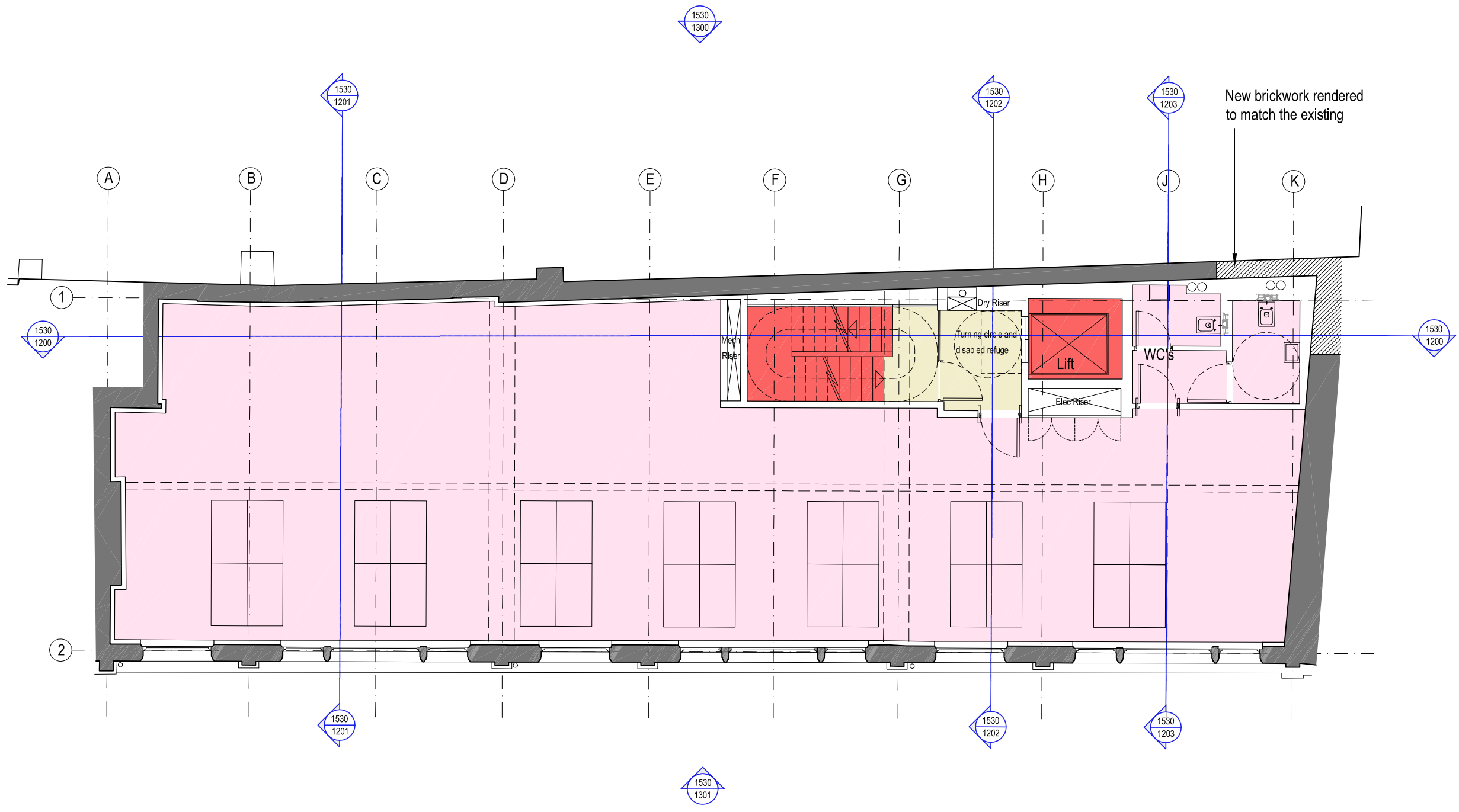
rev	date	drawn by	chkd	description
/	01.04.16	AB	SE	First Issue
A	05.04.16	AB	SE	Layouts Adjusted
B	16.05.16	AB	SE	Layouts Adjusted
C	23.05.16	AB	SE	Notes Added
D	02.06.16	AB	SE	Notes and Section Lines Updated
E	13.06.16	AB	SE	ISSUED FOR PLANNING



FOR PLANNING	
BRIMELOW McSWEENEY ARCHITECTS <small>26 Great Queen Street, Covent Garden, London WC2B 5EJ. tel: 020 7831 7835 - fax: 020 7831 7839 - email: admin@brm-architects.co.uk</small>	
<small>project</small> 9-13 Grape Street, London, WC2H	
<small>file</small> Proposed Second Floor Plan	
<small>scale</small>	<small>date</small>
1:100@A3	14-03-16
<small>drawn</small>	<small>drawn</small>
AB	AB
<small>drawing no.</small>	<small>revision</small>
1530-1103	E

Do not scale from this drawing, except for town planning purposes.
 Work to figured dimensions only.
 This drawing is the property of Brimelow McSweeney Architects and copyright is reserved by them.
 This drawing is issued on condition that it is not copied, used or disclosed by or to any unauthorised person without the prior written consent of Brimelow McSweeney Architects.
 The areas on the drawing have been measured directly from a CAD drawing and have no tolerances added or subtracted.
 The areas have been calculated in accordance with the Code of Measuring Practice, 6th Edition (2007) using the stated options NIA, GIA, GEA. They are approximate and relate to the likely areas of the building at the current state of the design. Any decisions to be made on the basis of these predictions, whether as to project viability, pre-letting, lease agreements and the like, should make allowance for the following:
 - Design development
 - Accurate site survey, site levels and dimensions need to be fully evaluated
 - Allowance for construction methods and building tolerances.
 - Local authority consents

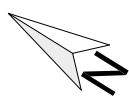
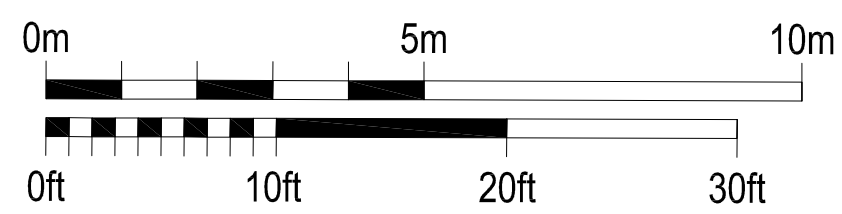
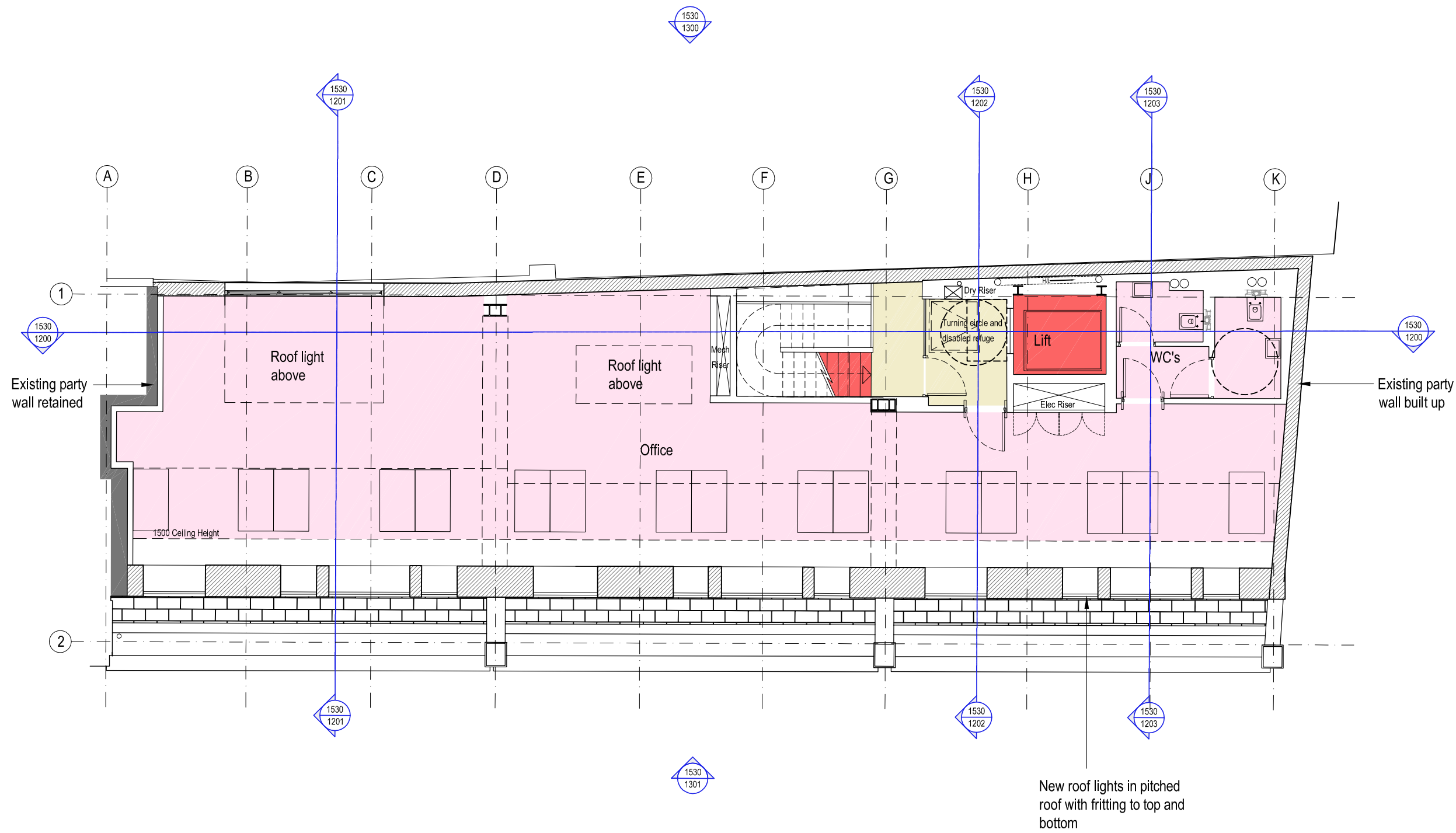
rev	date	drawn by	chkd	description
/	05.05.16	AB	SE	First Issue
A	16.05.16	AB	SE	Dry riser adjusted
B	23.05.16	AB	SE	Notes Added
C	02.06.16	AB	SE	Notes and Section Lines Updated
D	13.06.16	AB	SE	ISSUED FOR PLANNING



status		FOR PLANNING	
BRIMELOW McSWEENEY ARCHITECTS <small>26 Great Queen Street, Covent Garden, London WC2B 5EJ. tel: 020 7831 7835 - fax: 020 7831 7839 - email: admin@brm-architects.co.uk</small>			
project		9-13 Grape Street, London, WC2H	
file		Proposed Third Floor Plan	
scale	date	drawn	
1:100@A3	14-03-16	AB	
drawing no.	revision		
1530-1103	D		

Do not scale from this drawing, except for town planning purposes.
 Work to figured dimensions only.
 This drawing is the property of Brimelow McSweeney Architects and copyright is reserved by them.
 This drawing is issued on condition that it is not copied, used or disclosed by or to any unauthorised person without the prior written consent of Brimelow McSweeney Architects.
 The areas on the drawing have been measured directly from a CAD drawing and have no tolerances added or subtracted.
 The areas have been calculated in accordance with the Code of Measuring Practice, 6th Edition (2007) using the stated options N/A, GIA, GEA. They are approximate and relate to the likely areas of the building at the current state of the design. Any decisions to be made on the basis of these predictions, whether as to project viability, pre-letting, lease agreements and the like, should make allowance for the following:
 - Design development
 - Accurate site survey, site levels and dimensions need to be fully evaluated
 - Allowance for construction methods and building tolerances.
 - Local authority consents

rev	date	drawn by	chkd	description
/	01.04.16	AB	SE	First Issue
A	05.04.16	AB	SE	Layouts Adjusted
B	16.05.16	AB	SE	Rooflights Adjusted
C	23.05.16	AB	SE	Notes Added
D	02.06.16	AB	SE	Notes and Section Lines Updated
E	13.06.16	AB	SE	ISSUED FOR PLANNING



status **FOR PLANNING**

BRIMELOW McSWEENEY ARCHITECTS 

26 Great Queen Street, Covent Garden, London WC2B 5EL.
 tel: 020 7831 7835 - fax: 020 7831 7839 - email: admin@brim-architects.co.uk

project
 9-13 Grape Street,
 London, WC2H

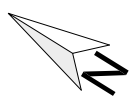
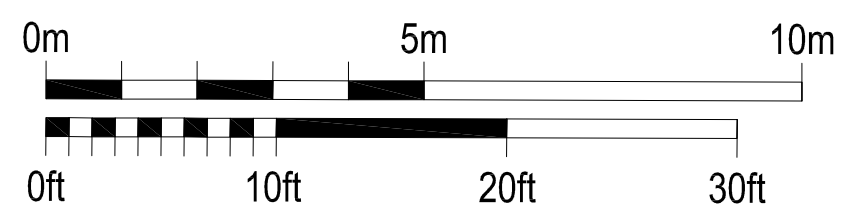
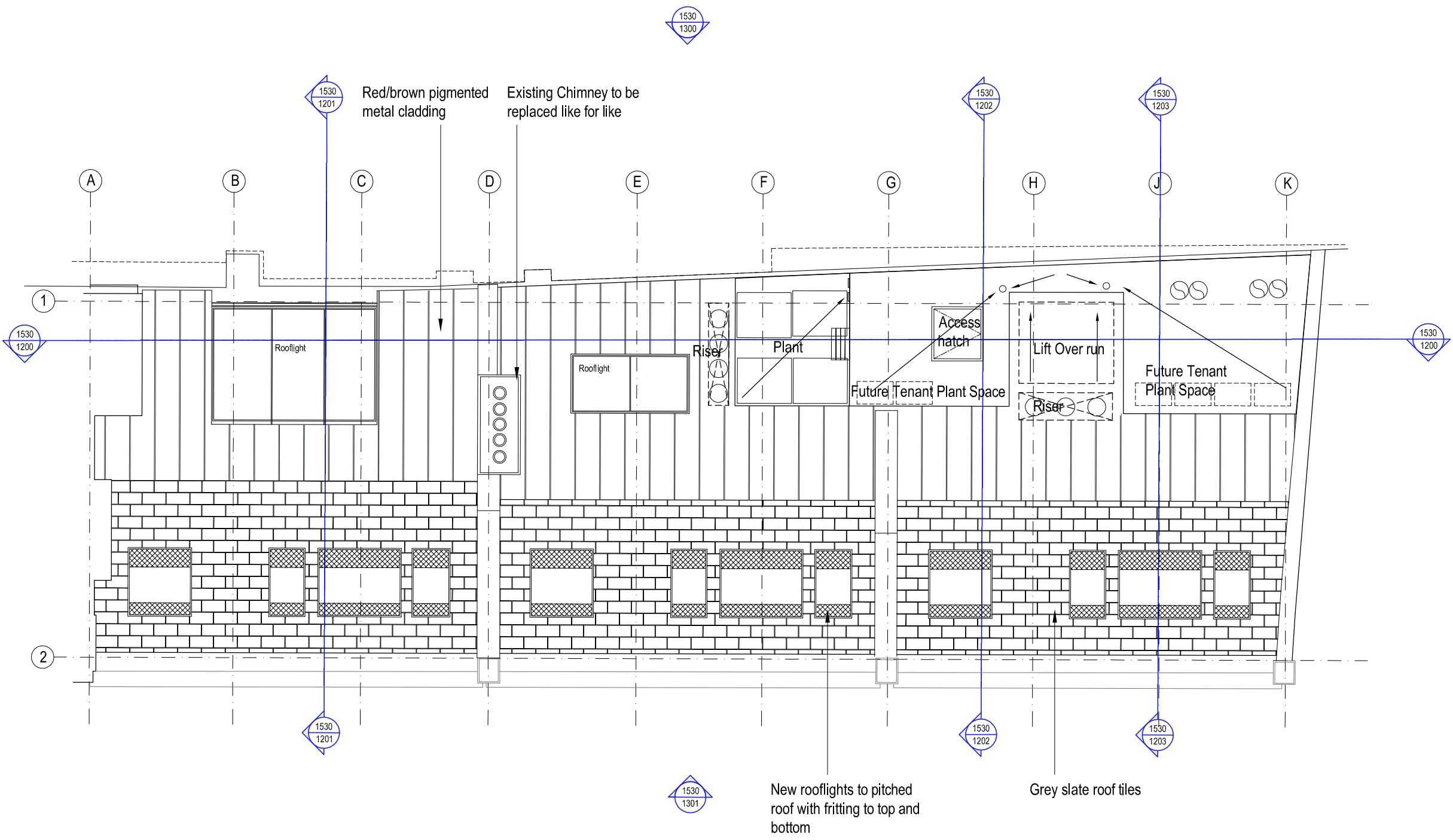
file
 Proposed Fourth Floor Plan

scale 1:100@A3 date 14-03-16 drawn AB

drawing no. 1530-1105 revision E

Do not scale from this drawing, except for town planning purposes.
 Work to figured dimensions only.
 This drawing is the property of Brimelow McSweeney Architects and copyright is reserved by them.
 This drawing is issued on condition that it is not copied, used or disclosed by or to any unauthorised person without the prior written consent of Brimelow McSweeney Architects.
 The areas on the drawing have been measured directly from a CAD drawing and have no tolerances added or subtracted.
 The areas have been calculated in accordance with the Code of Measuring Practice, 6th Edition (2007) using the stated options N/A, GIA, GEA. They are approximate and relate to the likely areas of the building at the current state of the design. Any decisions to be made on the basis of these predictions, whether as to project viability, pre-letting, lease agreements and the like, should make allowance for the following:
 - Design development
 - Accurate site survey, site levels and dimensions need to be fully evaluated
 - Allowance for construction methods and building tolerances.
 - Local authority consents

rev	date	drawn by	chkd	description
/	01.04.16	AB	SE	First Issue
A	05.04.16	AB	SE	Layouts Adjusted
B	16.05.16	AB	SE	Skylights adjusted
C	23.05.16	AB	SE	Notes Added
D	02.06.16	AB	SE	Notes and Section Lines Amended
E	13.06.16	AB	SE	ISSUED FOR PLANNING



status **FOR PLANNING**

BRIMELOW McSWEENEY ARCHITECTS 

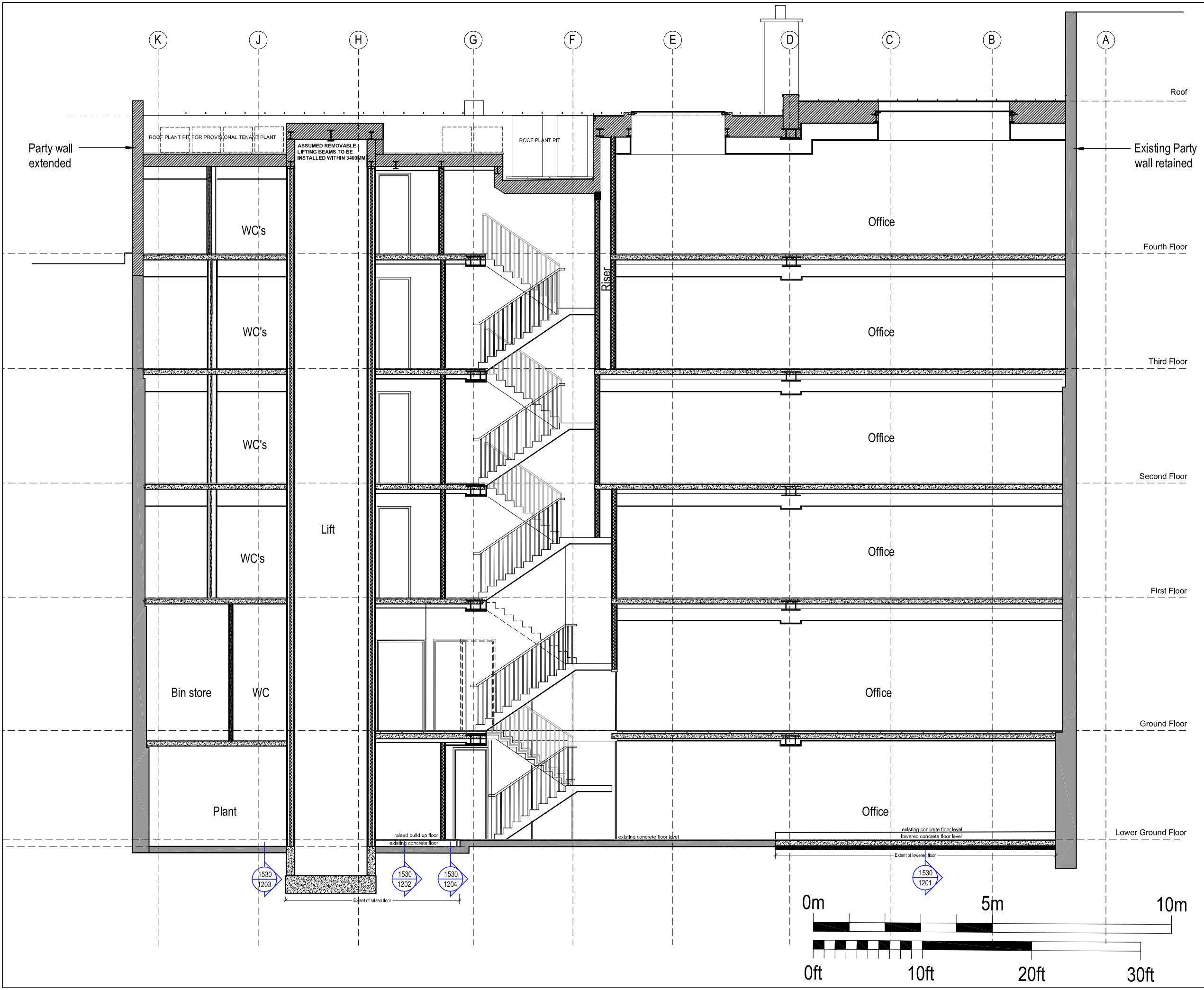
26 Great Queen Street, Covent Garden, London WC2B 5EL.
 tel: 020 7831 7835 - fax: 020 7831 7839 - email: admin@brim-architects.co.uk

project
 9-13 Grape Street,
 London, WC2H

file
 Proposed Roof Plan


scale 1:100@A3 date 14-03-16 drawn AB

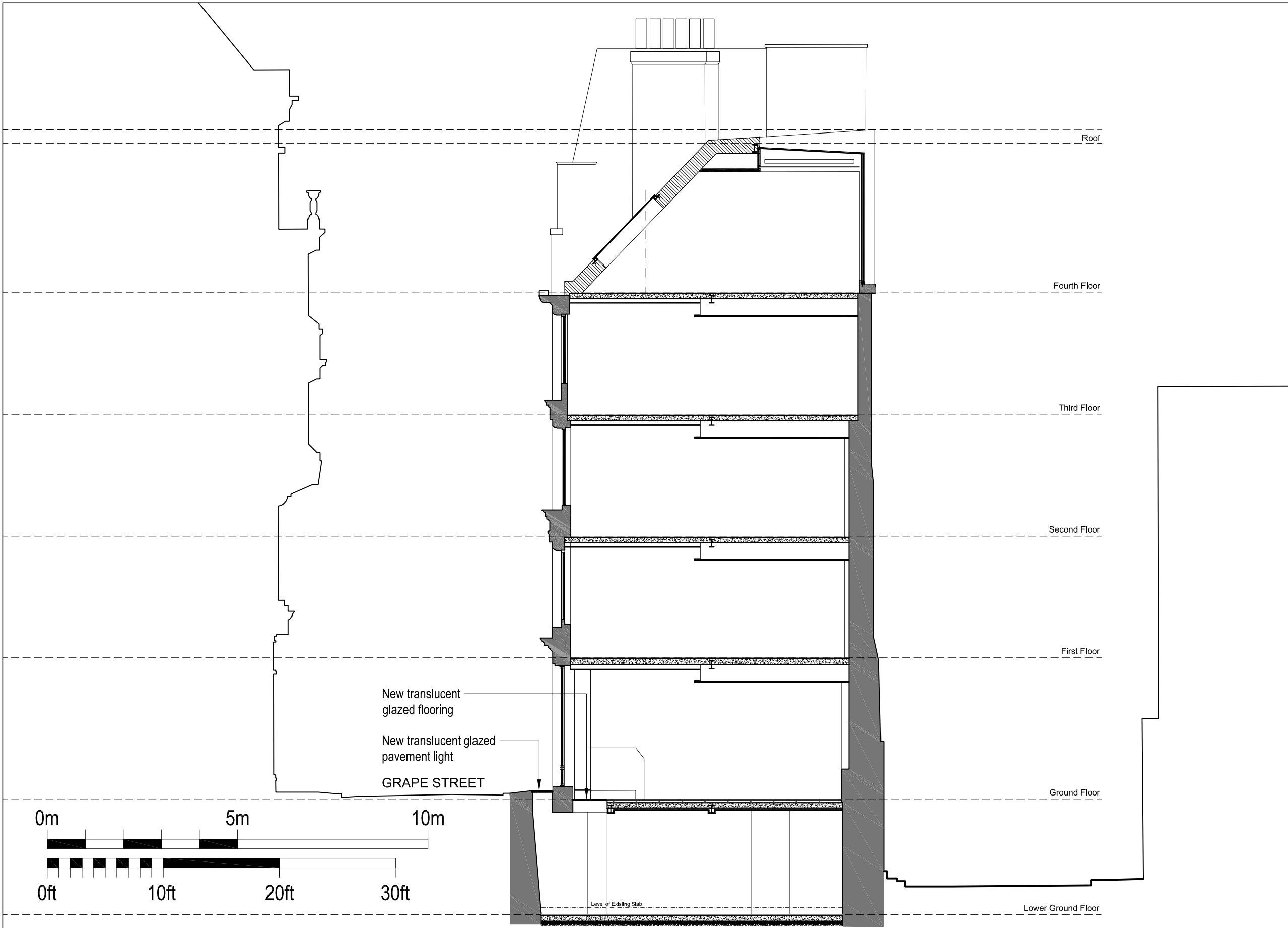
drawing no. 1530-1106 revision E



Do not scale from this drawing, except for town planning purposes.
 Work to figured dimensions only.
 This drawing is the property of Brimelow McSweeney Architects and copyright is reserved by them.
 This drawing is issued on condition that it is not copied, used or disclosed by or to any unauthorised person without the prior written consent of Brimelow McSweeney Architects.
 The areas on the drawing have been measured directly from a CAD drawing and have no tolerances added or subtracted.
 The areas have been calculated in accordance with the Code of Measuring Practice, 6th Edition (2007) using the stated options NIA, GIA, GEA. They are approximate and relate to the likely areas of the building at the current state of the design. Any decisions to be made on the basis of these predictions, whether as to project viability, pre-letting, lease agreements and the like, should make allowance for the following:

- Design development
 - Accurate site survey, site levels and dimensions need to be fully evaluated
 - Allowance for construction methods and building tolerances.
 - Local authority consents
- | rev | date | drawn by | chkd | description |
|-----|----------|----------|------|---------------------|
| / | 02.06.16 | AB | SE | First Issue |
| A | 13.06.16 | AB | SE | ISSUED FOR PLANNING |

status		
FOR PLANNING		
BRIMELOW McSWEENEY ARCHITECTS		
<small>26 Great Queen Street, Covent Garden, London WC2B 5EJ. tel: 020 7831 7835 - fax: 020 7831 7839 - email: admin@bm-architects.co.uk</small>		
project 9-13 Grape Street, London, WC2H		
title Proposed Section A-A		
scale 1:100@A3	date 17-03-16	drawn AB
drawing no. 1530-1200	revision A	



Do not scale from this drawing, except for town planning purposes.
 Work to figured dimensions only.
 This drawing is the property of Brimelow McSweeney Architects and copyright is reserved by them.
 This drawing is issued on condition that it is not copied, used or disclosed by or to any unauthorised person without the prior written consent of Brimelow McSweeney Architects.
 The areas on the drawing have been measured directly from a CAD drawing and have no tolerances added or subtracted.
 The areas have been calculated in accordance with the Code of Measuring Practice, 6th Edition (2007) using the stated options N/A, GIA, GEA. They are approximate and relate to the likely areas of the building at the current state of the design. Any decisions to be made on the basis of these predictions, whether as to project viability, pre-letting, lease agreements and the like, should make allowance for the following:
 - Design development
 - Accurate site survey, site levels and dimensions need to be fully evaluated
 - Allowance for construction methods and building tolerances.
 - Local authority consents

rev	date	drawn by	chkd	description
/	16.05.16	AB	RW	Preliminary Issue
A	23.05.16	AB	RW	Notes Added
B	02.06.16	AB	RW	General Updates
C	13.06.16	AB	SE	ISSUED FOR PLANNING

status **FOR PLANNING**

BRIMELOW McSWEENEY ARCHITECTS 
 26 Great Queen Street, Covent Garden, London WC2B 6EL
 tel: 020 7831 7835 - fax: 020 7831 7839 - email: admin@brim-architects.co.uk

project
 9-13 Grape Street,
 London, WC2H

file
 Proposed Section B-B

scale	date	drawn
1:100@A3	17-03-16	AB

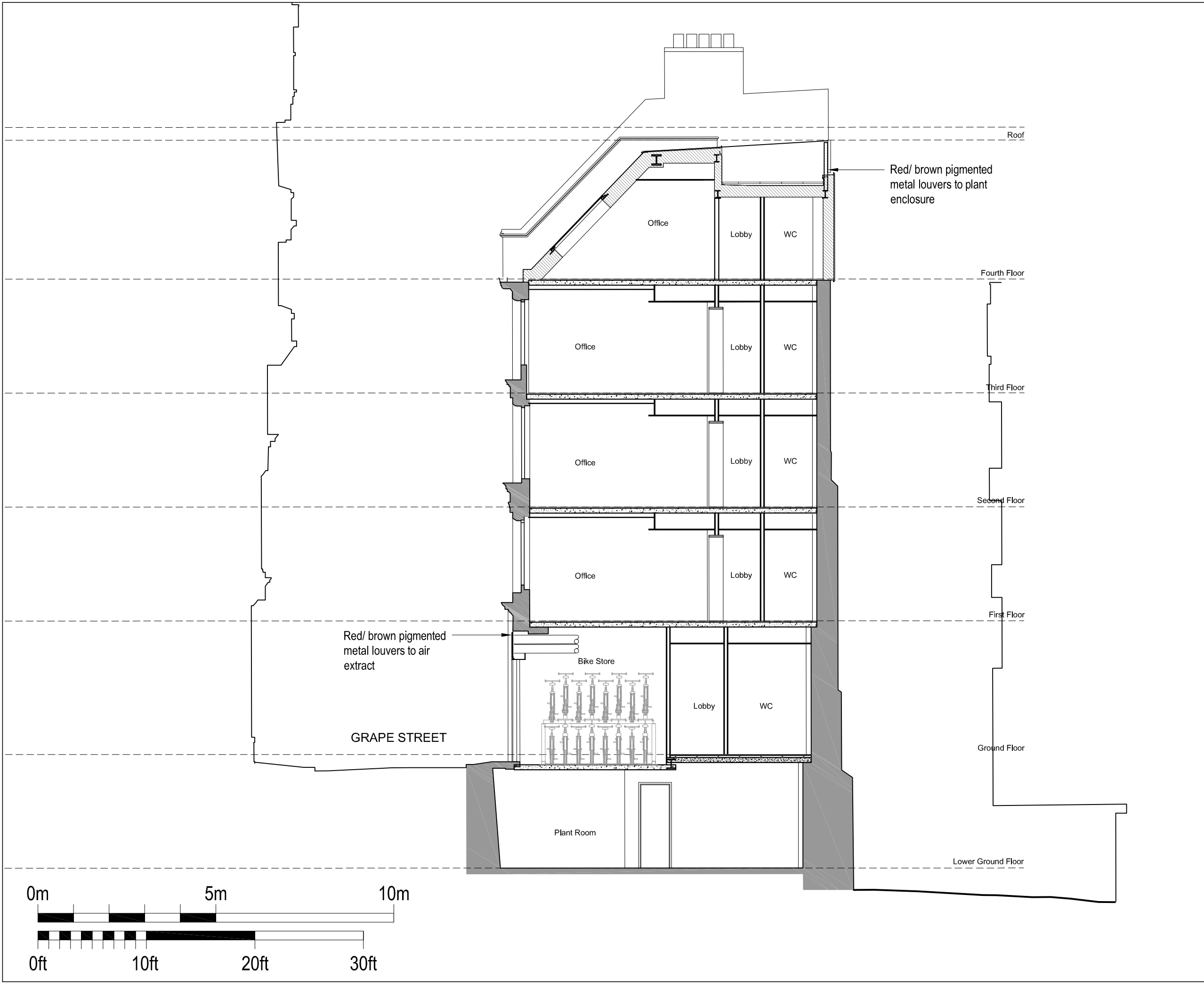
drawing no.	revision
1530-1201	C



Do not scale from this drawing, except for town planning purposes.
 Work to figured dimensions only.
 This drawing is the property of Brimelow McSweeney Architects and copyright is reserved by them.
 This drawing is issued on condition that it is not copied, used or disclosed by or to any unauthorised person without the prior written consent of Brimelow McSweeney Architects.
 The areas on the drawing have been measured directly from a CAD drawing and have no tolerances added or subtracted.
 The areas have been calculated in accordance with the Code of Measuring Practice, 6th Edition (2007) using the stated options N/A, GIA, GEA. They are approximate and relate to the likely areas of the building at the current state of the design. Any decisions to be made on the basis of these predictions, whether as to project viability, pre-letting, lease agreements and the like, should make allowance for the following:
 - Design development
 - Accurate site survey, site levels and dimensions need to be fully evaluated
 - Allowance for construction methods and building tolerances.
 - Local authority consents

rev	date	drawn by	chkd	description
/	02.06.16	AB	SE	First Issue
A	13.06.16	AB	SE	ISSUED FOR PLANNING

status			FOR PLANNING		
BRIMELOW McSWEENEY ARCHITECTS					
<small>26 Great Queen Street, Covent Garden, London WC2B 5EJ. tel: 020 7831 7835 - fax: 020 7831 7839 - email: admin@bm-architects.co.uk</small>					
project			9-13 Grape Street, London, WC2H		
file			Proposed Section C-C		
scale	date	drawn			
1:100@A3	17-03-16	AB			
drawing no.	revision				
1530-1202	A				



Do not scale from this drawing, except for town planning purposes.
 Work to figured dimensions only.
 This drawing is the property of Brimelow McSweeney Architects and copyright is reserved by them.
 This drawing is issued on condition that it is not copied, used or disclosed by or to any unauthorised person without the prior written consent of Brimelow McSweeney Architects.
 The areas on the drawing have been measured directly from a CAD drawing and have no tolerances added or subtracted.
 The areas have been calculated in accordance with the Code of Measuring Practice, 6th Edition (2007) using the stated options N/A, GIA, GEA. They are approximate and relate to the likely areas of the building at the current state of the design. Any decisions to be made on the basis of these predictions, whether as to project viability, pre-letting, lease agreements and the like, should make allowance for the following:
 - Design development
 - Accurate site survey, site levels and dimensions need to be fully evaluated
 - Allowance for construction methods and building tolerances.
 - Local authority consents

rev date drawn by chkd description
 / 02.06.16 AB SE First Issue
 A 13.06.16 AB SE ISSUED FOR PLANNING

status		
FOR PLANNING		
BRIMELOW McSWEENEY ARCHITECTS 		
<small>26 Great Queen Street, Covent Garden, London WC2B 5EL. tel: 020 7831 7835 - fax: 020 7831 7839 - email: admin@bm-architects.co.uk</small>		
project		
9-13 Grape Street, London, WC2H		
file		
Proposed Section D-D		
scale	date	drawn
1:100@A3	17-03-16	AB
drawing no.	revision	
1530-1203	A	




Do not scale from this drawing, except for town planning purposes.
 Work to figured dimensions only.
 This drawing is the property of Brimelow McSweeney Architects and copyright is reserved by them.
 This drawing is issued on condition that it is not copied, used or disclosed by or to any unauthorised person without the prior written consent of Brimelow McSweeney Architects.
 The areas on the drawing have been measured directly from a CAD drawing and have no tolerances added or subtracted.
 The areas have been calculated in accordance with the Code of Measuring Practice, 6th Edition (2007) using the stated options N/A, GIA, GEA. They are approximate and relate to the likely areas of the building at the current state of the design. Any decisions to be made on the basis of these predictions, whether as to project viability, pre-letting, lease agreements and the like, should make allowance for the following:
 - Design development
 - Accurate site survey, site levels and dimensions need to be fully evaluated
 - Allowance for construction methods and building tolerances.
 - Local authority consents

rev	date	drawn by	chkd	description
/	16.05.16	AB	SE	First Issue
A	23.05.16	AB	SE	Notes Added
B	02.06.16	AB	SE	General Updates
C	13.06.16	AB	SE	ISSUED FOR PLANNING

- ① Location of dry riser inlet partially glazed red/ brown coloured metal box.
- ② Red/brown pigmented metal privacy screen.
- ③ Red/ brown coloured metal panel
- ④ Grey slate roof tiles
- ⑤ New black RWP's in same location as the existing
- ⑥ Red/ brown pigmented decorative metal louvers
- ⑦ Fritted glazing to top and bottom of windows
- ⑧ Dark grey aluminium frames
- ⑨ Bronze coloured metal finish frames
- ⑩ New window frames to match existing
- ⑪ Chimney to be replaced like for like

status **FOR PLANNING**

BRIMELOW McSWEENEY ARCHITECTS 

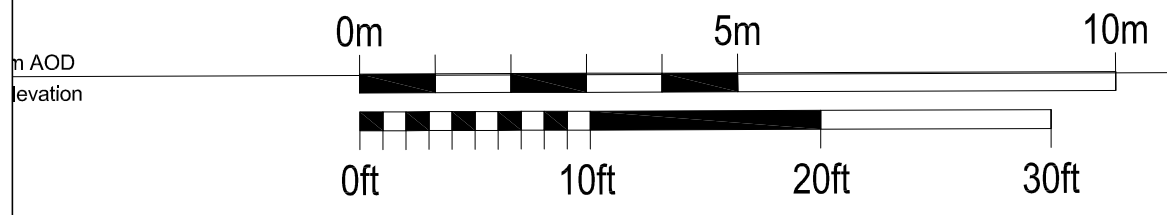
28 Great Queen Street, Covent Garden, London WC2B 5EJ.
 tel: 020 7631 7835 - fax: 020 7631 7839 - email: admin@brimelowmcsweeney.co.uk

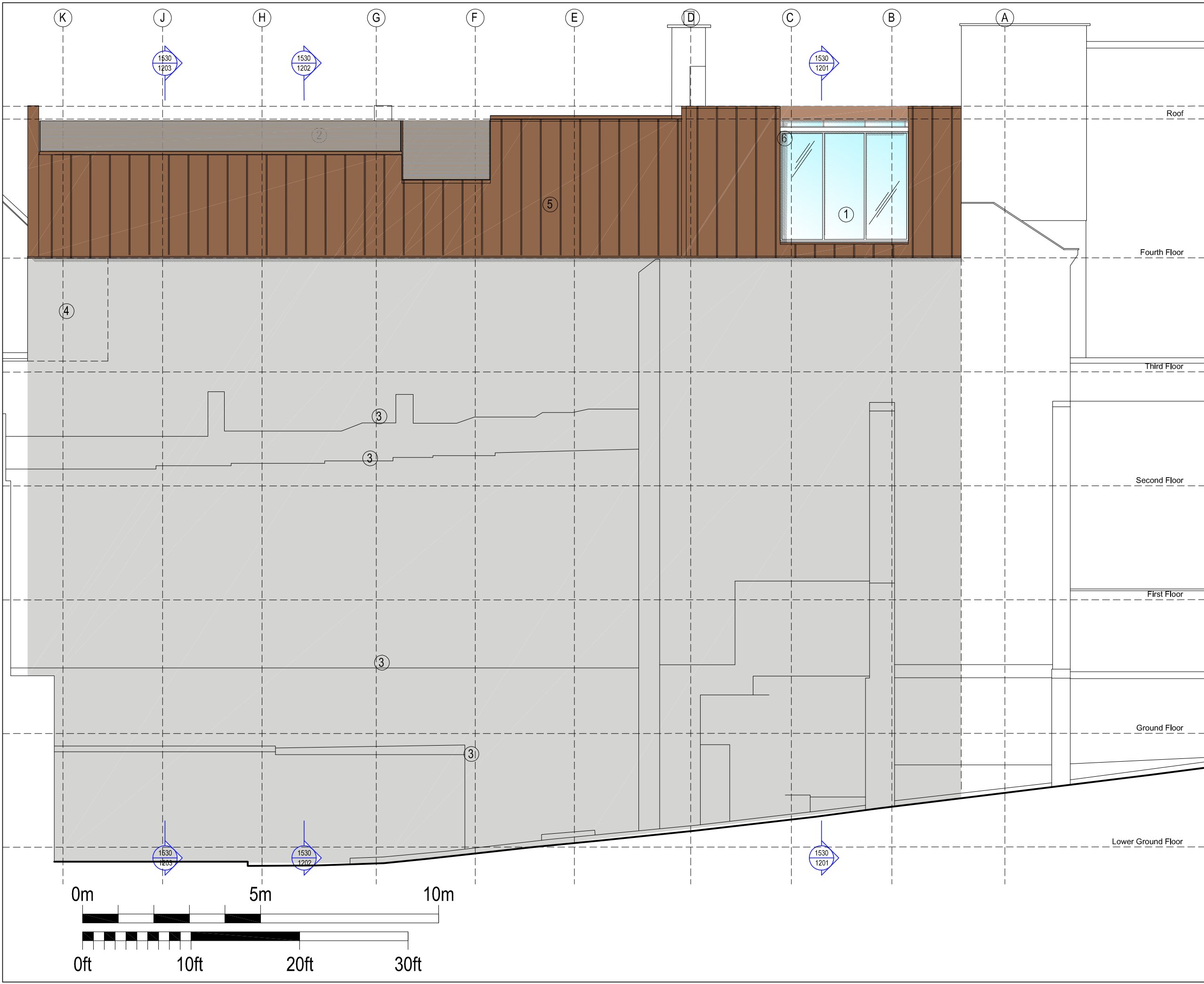
project
 9-13 Grape Street,
 London, WC2H

file
 Proposed Front Elevation

scale 1:100@A3 date 17-03-16 drawn AB

drawing no. 1530-1300 revision C





Do not scale from this drawing, except for town planning purposes.
 Work to figured dimensions only.
 This drawing is the property of Brimelow McSweeney Architects and copyright is reserved by them.
 This drawing is issued on condition that it is not copied, used or disclosed by or to any unauthorised person without the prior written consent of Brimelow McSweeney Architects.
 The areas on the drawing have been measured directly from a CAD drawing and have no tolerances added or subtracted.
 The areas have been calculated in accordance with the Code of Measuring Practice, 6th Edition (2007) using the stated options N/A, G/A, GEA. They are approximate and relate to the likely areas of the building at the current state of the design. Any decisions to be made on the basis of these predictions, whether as to project viability, pre-letting, lease agreements and the like, should make allowance for the following:
 - Design development
 - Accurate site survey, site levels and dimensions need to be fully evaluated
 - Allowances for construction methods and building tolerances.
 - Local authority consents

rev	date	drawn by	chkd	description
/	16.05.16	AB	SE	First Issue
A	23.05.16	AB	SE	Notes Added
B	02.06.16	AB	SE	General Updates
C	01.07.16	AB	SE	ISSUED FOR PLANNING

- ① Fire rated glazing
- ② Red/ brown pigmented metal vent louvres
- ③ Steps in rear wall construction retained, cleaned, repaired
- ④ New brickwork finished to match existing
- ⑤ Red/ brown pigmented metal cladding
- ⑥ Dark grey window frame

status **FOR PLANNING**

BRIMELOW McSWEENEY ARCHITECTS 

28 Great Queen Street, Covent Garden, London WC2B 5EL.
 tel: 020 7831 7835 - fax: 020 7831 7839 - email: admin@brim-architects.co.uk

project
 9-13 Grape Street,
 London, WC2H

title
 Proposed Rear Elevation

scale	date	drawn
1:100@A3	17-03-16	AB

drawing no.	revision
1530-0301	C

