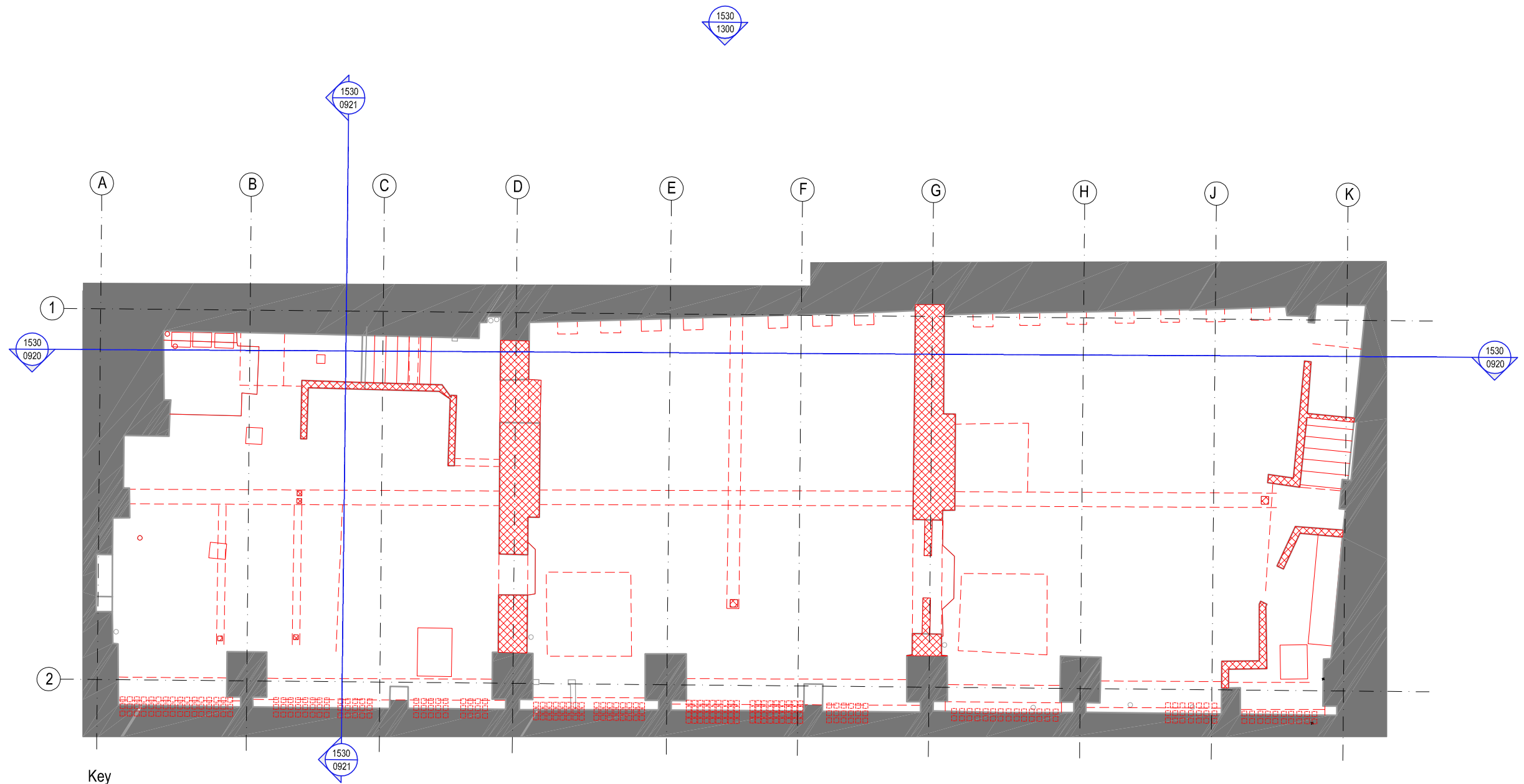



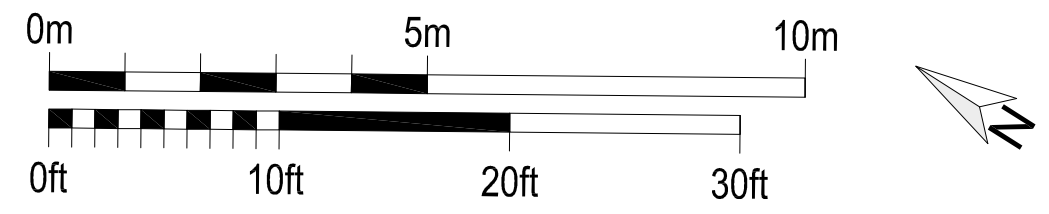



Do not scale from this drawing, except for town planning purposes.
 Work to figured dimensions only.
 This drawing is the property of Brimelow McSweeney Architects and copyright is reserved by them.
 This drawing is issued on condition that it is not copied, used or disclosed by or to any unauthorised person without the prior written consent of Brimelow McSweeney Architects.
 The areas on the drawing have been measured directly from a CAD drawing and have no tolerances added or subtracted.
 The areas have been calculated in accordance with the Code of Measuring Practice, 6th Edition (2007) using the stated options NIA, GIA, GEA. They are approximate and relate to the likely areas of the building at the current state of the design. Any decisions to be made on the basis of these predictions, whether as to project viability, pre-letting, lease agreements and the like, should make allowance for the following:
 - Design development
 - Accurate site survey, site levels and dimensions need to be fully evaluated
 - Allowance for construction methods and building tolerances.
 - Local authority consents
 rev date drawn by chkd description
 / 13.06.16 RW SE ISSUED FOR PLANNING



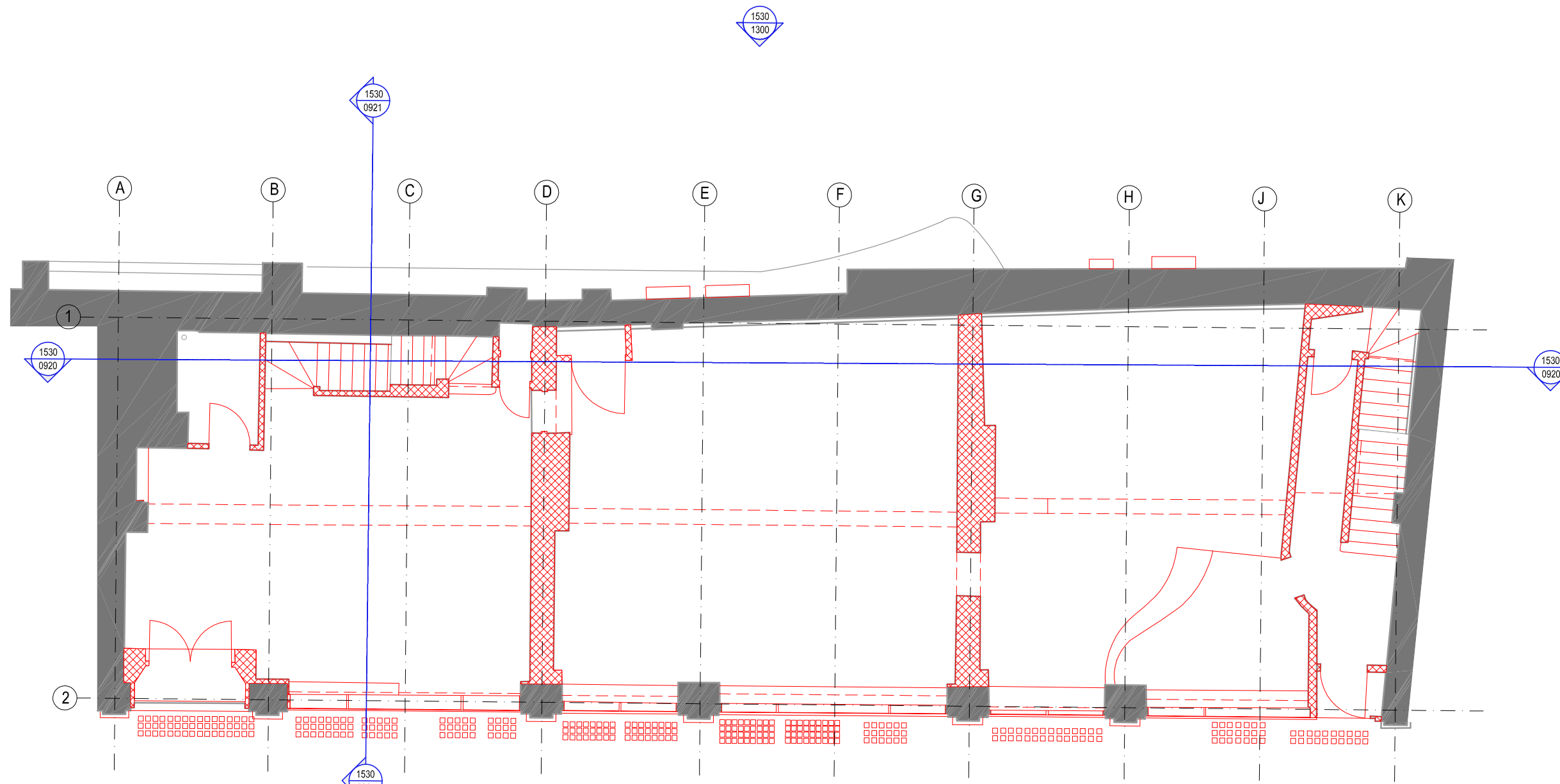
- Key**
-  Existing fabric to be removed
 -  Fittings / stairs / features to be demolished
 -  Features overhead to be demolished






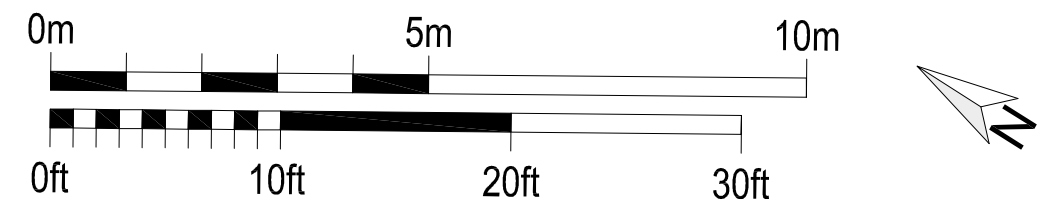
status		
FOR PLANNING		
BRIMELOW McSWEENEY ARCHITECTS 		
<small>26 Great Queen Street, Covent Garden, London WC2B 5EJ. tel: 020 7831 7835 - fax: 020 7831 7839 - email: admin@brim-architects.co.uk</small>		
project		
9-13 Grape Street, London, WC2H		
file		
Demolition Basement Plan		
scale	date	drawn
1:100@A3	14-03-16	RW
drawing no.	revision	
1530-0900	.	

Do not scale from this drawing, except for town planning purposes.
 Work to figured dimensions only.
 This drawing is the property of Brimelow McSweeney Architects and copyright is reserved by them.
 This drawing is issued on condition that it is not copied, used or disclosed by or to any unauthorised person without the prior written consent of Brimelow McSweeney Architects.
 The areas on the drawing have been measured directly from a CAD drawing and have no tolerances added or subtracted.
 The areas have been calculated in accordance with the Code of Measuring Practice, 6th Edition (2007) using the stated options NIA, GIA, GEA. They are approximate and relate to the likely areas of the building at the current state of the design. Any decisions to be made on the basis of these predictions, whether as to project viability, pre-letting, lease agreements and the like, should make allowance for the following:
 - Design development
 - Accurate site survey, site levels and dimensions need to be fully evaluated
 - Allowance for construction methods and building tolerances.
 - Local authority consents

rev date drawn by chkd description
 / 13.06.16 RW SE ISSUED FOR PLANNING

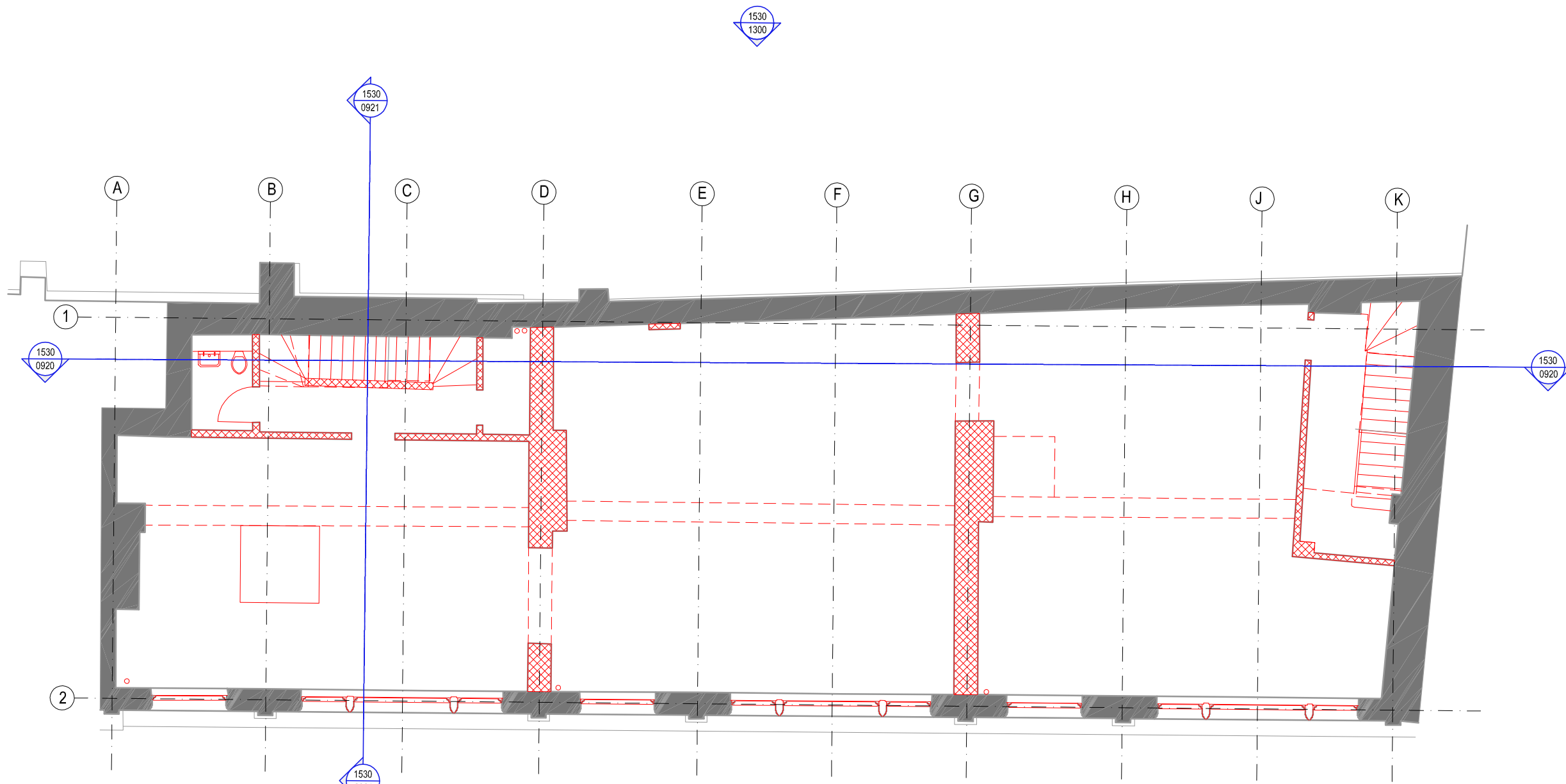





- Key**
-  Existing building fabric to be removed
 -  Fittings / stairs / features to be demolished
 -  Features overhead to be demolished

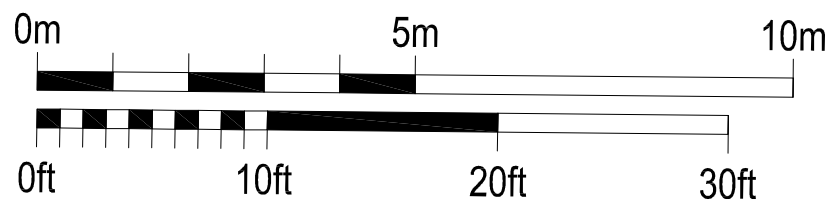


FOR PLANNING		
BRIMELOW McSWEENEY ARCHITECTS <small>26 Great Queen Street, Covent Garden, London WC2B 5EJ. tel: 020 7831 7835 - fax: 020 7831 7839 - email: admin@brm-architects.co.uk</small>		
<small>project</small> 9-13 Grape Street, London, WC2H		
<small>file</small> Demolition Ground Floor Plan		
<small>scale</small> 1:100@A3	<small>date</small> 14-03-16	<small>drawn</small> RW
<small>drawing no.</small> 1530-0901	<small>revision</small> .	

Do not scale from this drawing, except for town planning purposes.
 Work to figured dimensions only.
 This drawing is the property of Brimelow McSweeney Architects and copyright is reserved by them.
 This drawing is issued on condition that it is not copied, used or disclosed by or to any unauthorised person without the prior written consent of Brimelow McSweeney Architects.
 The areas on the drawing have been measured directly from a CAD drawing and have no tolerances added or subtracted.
 The areas have been calculated in accordance with the Code of Measuring Practice, 6th Edition (2007) using the stated options N/A, GIA, GEA. They are approximate and relate to the likely areas of the building at the current state of the design. Any decisions to be made on the basis of these predictions, whether as to project viability, pre-letting, lease agreements and the like, should make allowance for the following:
 - Design development
 - Accurate site survey, site levels and dimensions need to be fully evaluated
 - Allowance for construction methods and building tolerances.
 - Local authority consents
 rev date drawn by chkd description
 / 13.06.16 RW SE ISSUED FOR PLANNING

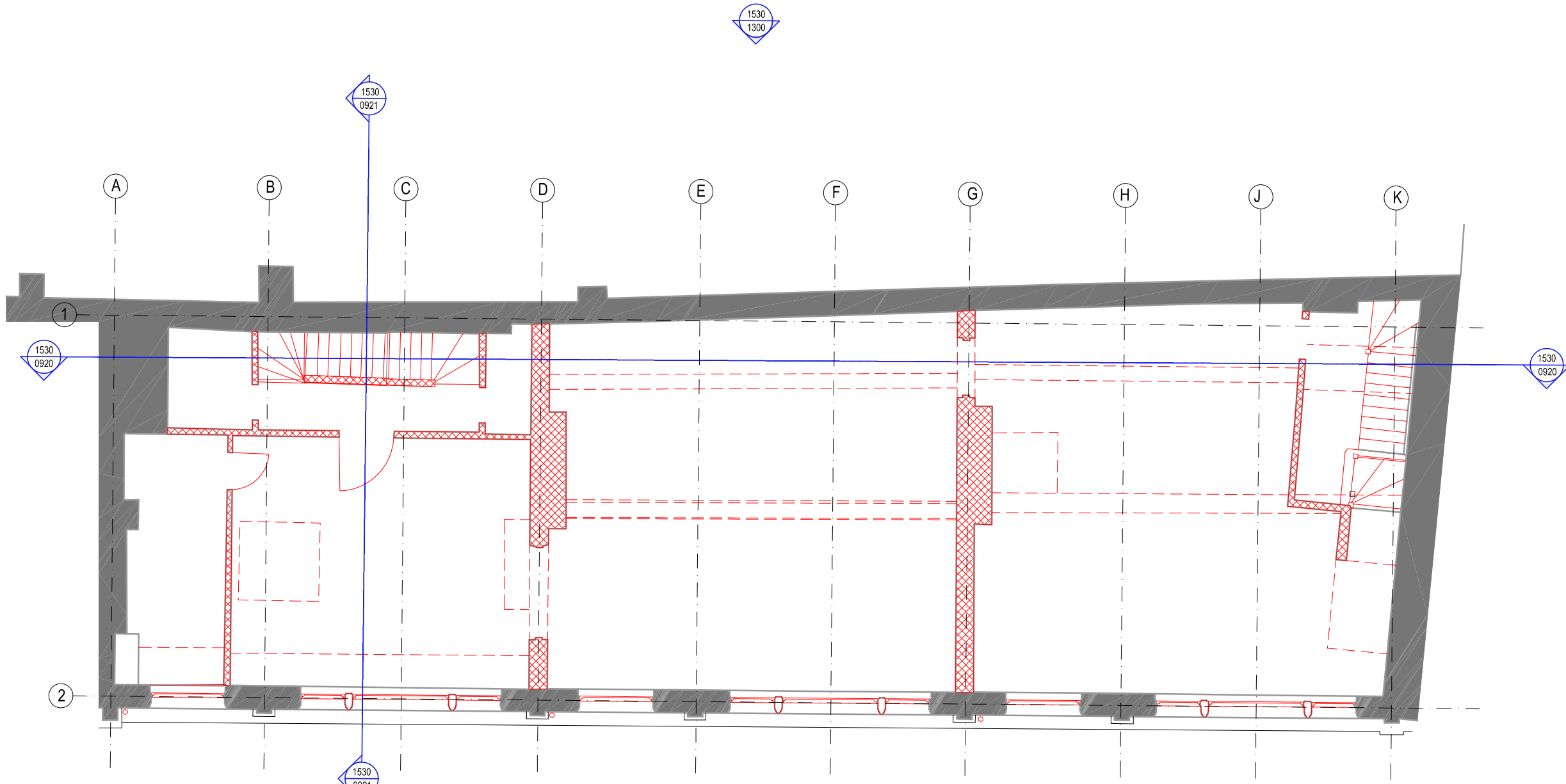





- Key**
-  Existing fabric to be removed
 -  Fittings / stairs / features to be demolished
 -  Features overhead to be demolished

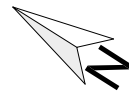
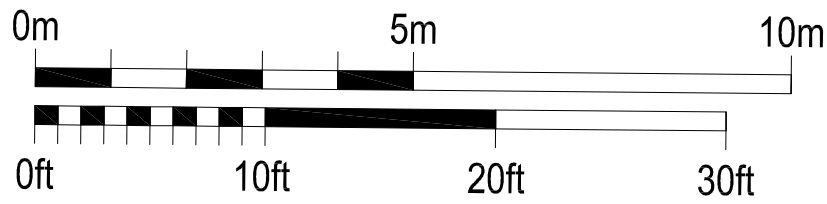


FOR PLANNING		
BRIMELOW McSWEENEY ARCHITECTS <small>26 Great Queen Street, Covent Garden, London WC2B 5EJ. tel: 020 7831 7835 - fax: 020 7831 7839 - email: admin@brm-architects.co.uk</small>		
<small>project</small> 9-13 Grape Street, London, WC2H		
<small>file</small> Demolition First Floor Plan		
<small>scale</small> 1:100@A3	<small>date</small> 14-03-16	<small>drawn</small> RW
<small>drawing no.</small> 1530-0902	<small>revision</small> .	

Do not scale from this drawing, except for town planning purposes.
 Work to figured dimensions only.
 This drawing is the property of Brimelow McSweeney Architects and copyright is reserved by them.
 This drawing is issued on condition that it is not copied, used or disclosed by or to any unauthorised person without the prior written consent of Brimelow McSweeney Architects.
 The areas on the drawing have been measured directly from a CAD drawing and have no tolerances added or subtracted.
 The areas have been calculated in accordance with the Code of Measuring Practice, 6th Edition (2007) using the stated options NIA, GIA, GEA. They are approximate and relate to the likely areas of the building at the current state of the design. Any decisions to be made on the basis of these predictions, whether as to project viability, pre-letting, lease agreements and the like, should make allowance for the following:
 - Design development
 - Accurate site survey, site levels and dimensions need to be fully evaluated
 - Allowance for construction methods and building tolerances.
 - Local authority consents
 rev date drawn by chkd description
 / 13.06.16 RW SE ISSUED FOR PLANNING

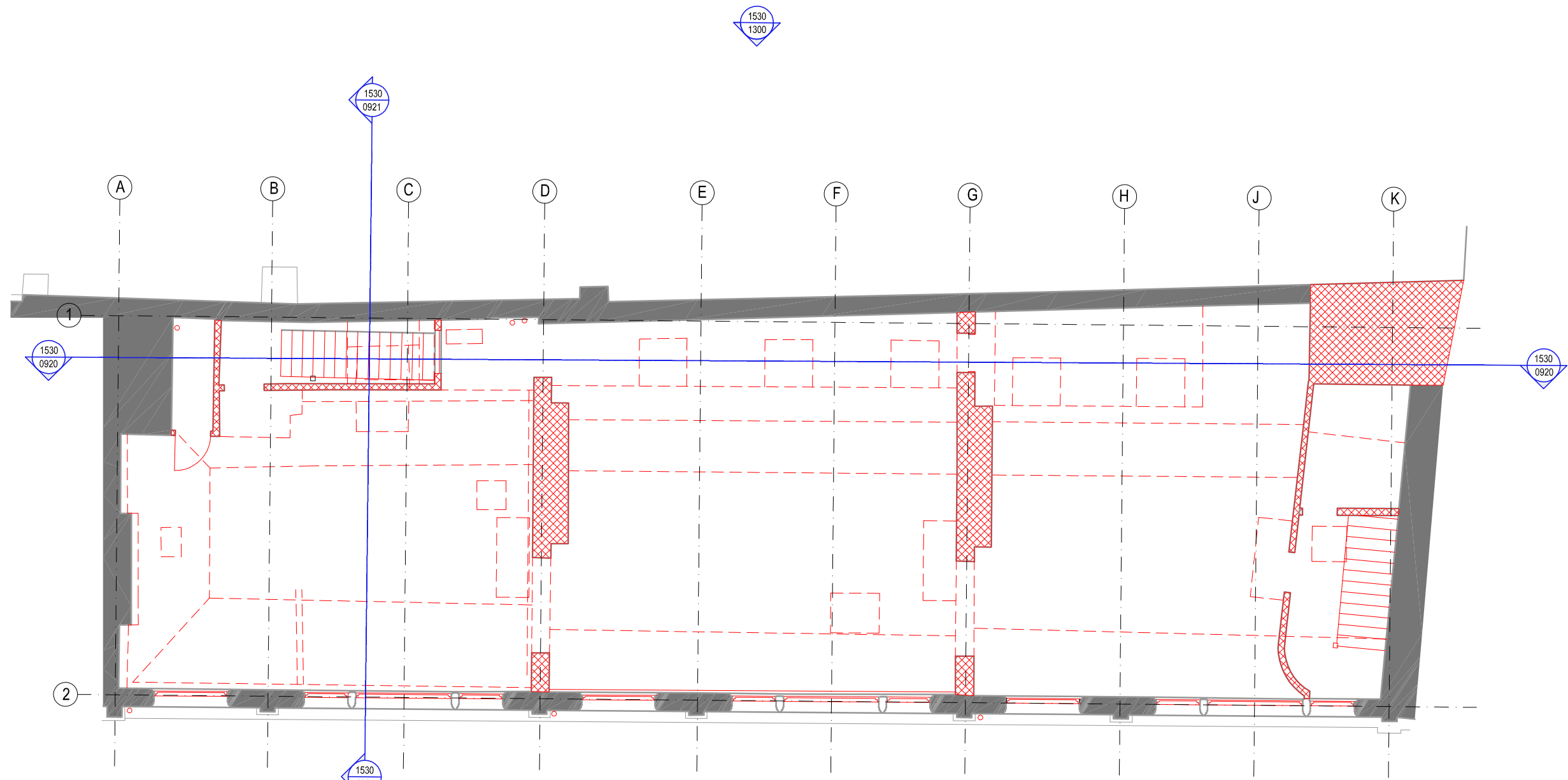





- Key**
-  Existing fabric to be removed
 -  Fittings / stairs / features to be demolished
 -  Features overhead to be demolished

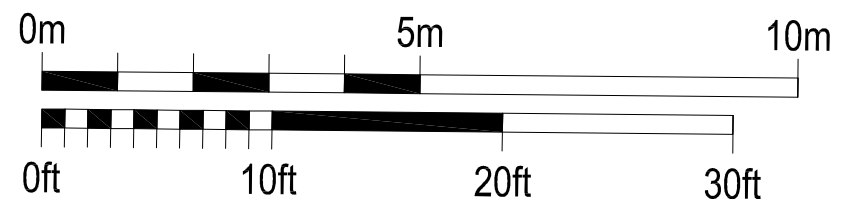


FOR PLANNING		
BRIMELOW McSWEENEY ARCHITECTS <small>26 Great Queen Street, Covent Garden, London WC2B 5EJ. tel: 020 7831 7835 - fax: 020 7831 7839 - email: adm@brm-architects.co.uk</small>		
<small>project</small> 9-13 Grape Street, London, WC2H		
<small>file</small> Demolition Second Floor Plan		
<small>scale</small> 1:100@A3	<small>date</small> 14-03-16	<small>drawn</small> RW
<small>drawing no.</small> 1530-0903	<small>revision</small> .	

Do not scale from this drawing, except for town planning purposes.
 Work to figured dimensions only.
 This drawing is the property of Brimelow McSweeney Architects and copyright is reserved by them.
 This drawing is issued on condition that it is not copied, used or disclosed by or to any unauthorised person without the prior written consent of Brimelow McSweeney Architects.
 The areas on the drawing have been measured directly from a CAD drawing and have no tolerances added or subtracted.
 The areas have been calculated in accordance with the Code of Measuring Practice, 6th Edition (2007) using the stated options NIA, GIA, GEA. They are approximate and relate to the likely areas of the building at the current state of the design. Any decisions to be made on the basis of these predictions, whether as to project viability, pre-letting, lease agreements and the like, should make allowance for the following:
 - Design development
 - Accurate site survey, site levels and dimensions need to be fully evaluated
 - Allowance for construction methods and building tolerances.
 - Local authority consents
 rev date drawn by chkd description
 / 13.06.16 RW SE ISSUED FOR PLANNING

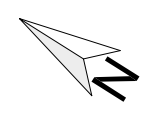
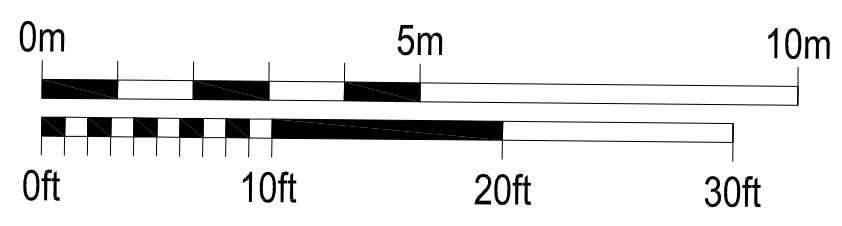
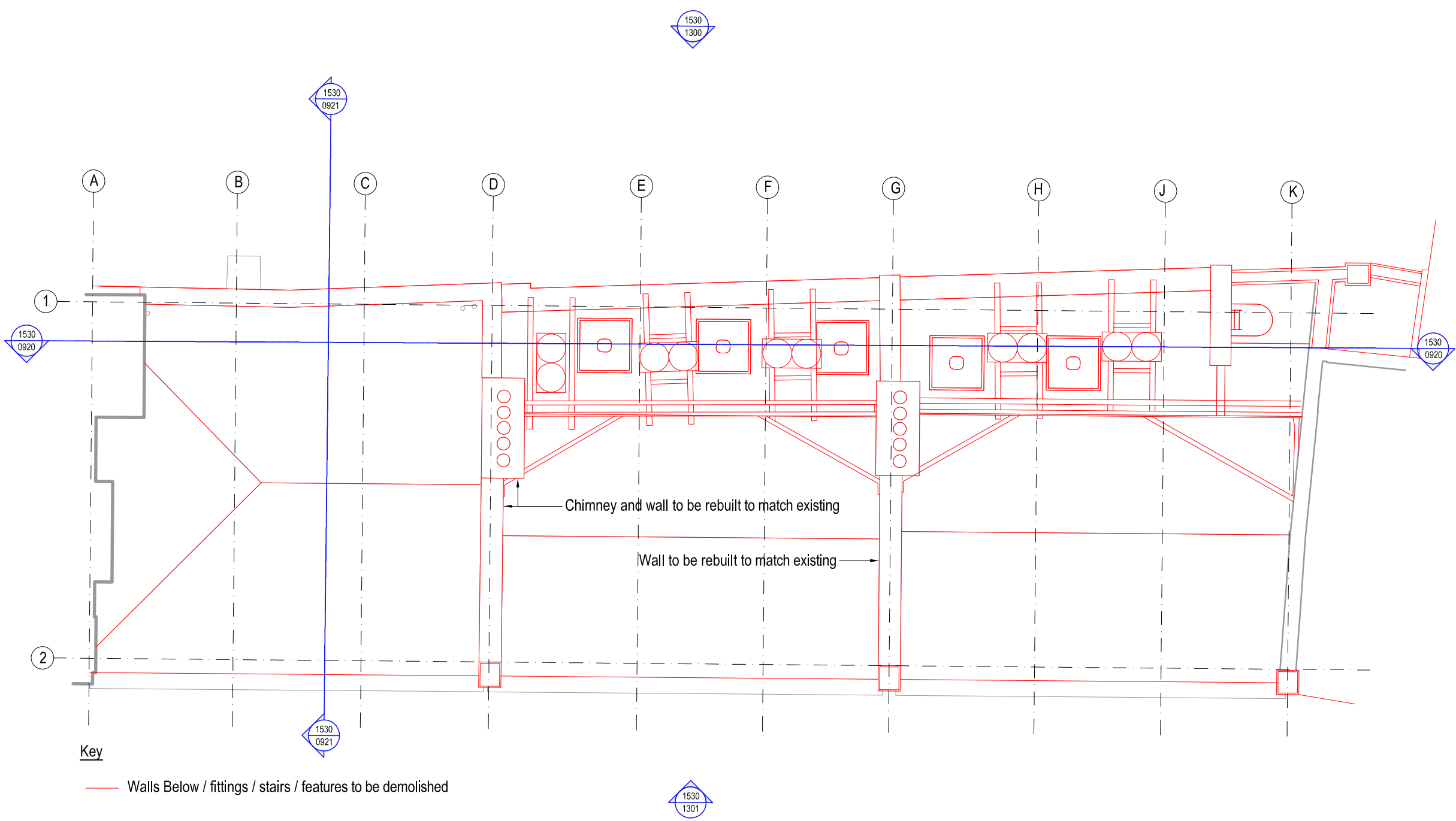


- Key**
-  Existing fabric to be removed
 -  Fittings / stairs / features to be demolished
 -  Features overhead to be demolished

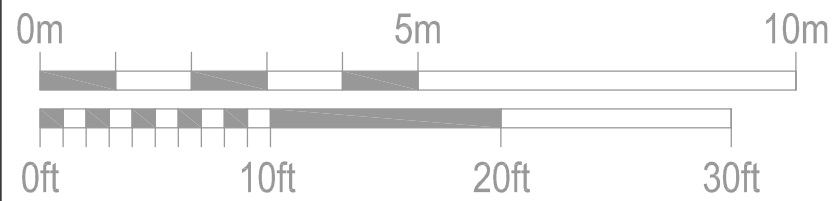
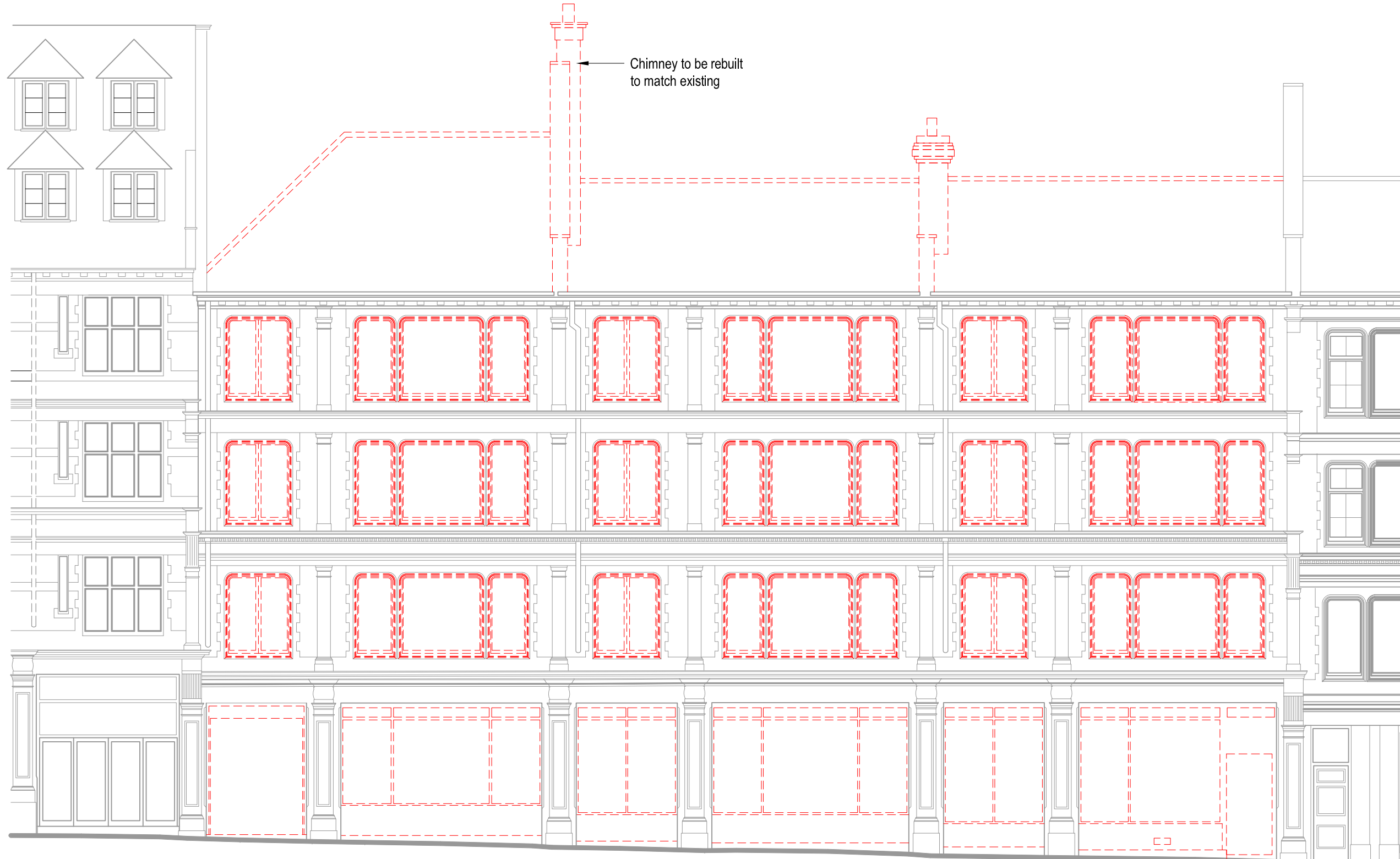


FOR PLANNING		
BRIMELOW McSWEENEY ARCHITECTS <small>26 Great Queen Street, Covent Garden, London WC2B 5EL tel: 020 7831 7835 - fax: 020 7831 7830 - email: admin@brm-architects.co.uk</small>		
<small>project</small> 9-13 Grape Street, London, WC2H		
<small>file</small> Demolition Third Floor Plan		
<small>scale</small>	<small>date</small>	<small>drawn</small>
1:100@A3	14-03-16	RW
<small>drawing no.</small>	<small>revision</small>	
1530-0904	.	

Do not scale from this drawing, except for town planning purposes.
 Work to figured dimensions only.
 This drawing is the property of Brimelow McSweeney Architects and copyright is reserved by them.
 This drawing is issued on condition that it is not copied, used or disclosed by or to any unauthorised person without the prior written consent of Brimelow McSweeney Architects.
 The areas on the drawing have been measured directly from a CAD drawing and have no tolerances added or subtracted.
 The areas have been calculated in accordance with the Code of Measuring Practice, 6th Edition (2007) using the stated options NIA, GIA, GEA. They are approximate and relate to the likely areas of the building at the current state of the design. Any decisions to be made on the basis of these predictions, whether as to project viability, pre-letting, lease agreements and the like, should make allowance for the following:
 - Design development
 - Accurate site survey, site levels and dimensions need to be fully evaluated
 - Allowance for construction methods and building tolerances.
 - Local authority consents
 rev date drawn by chkd description
 / 13.06.16 RW SE ISSUED FOR PLANNING



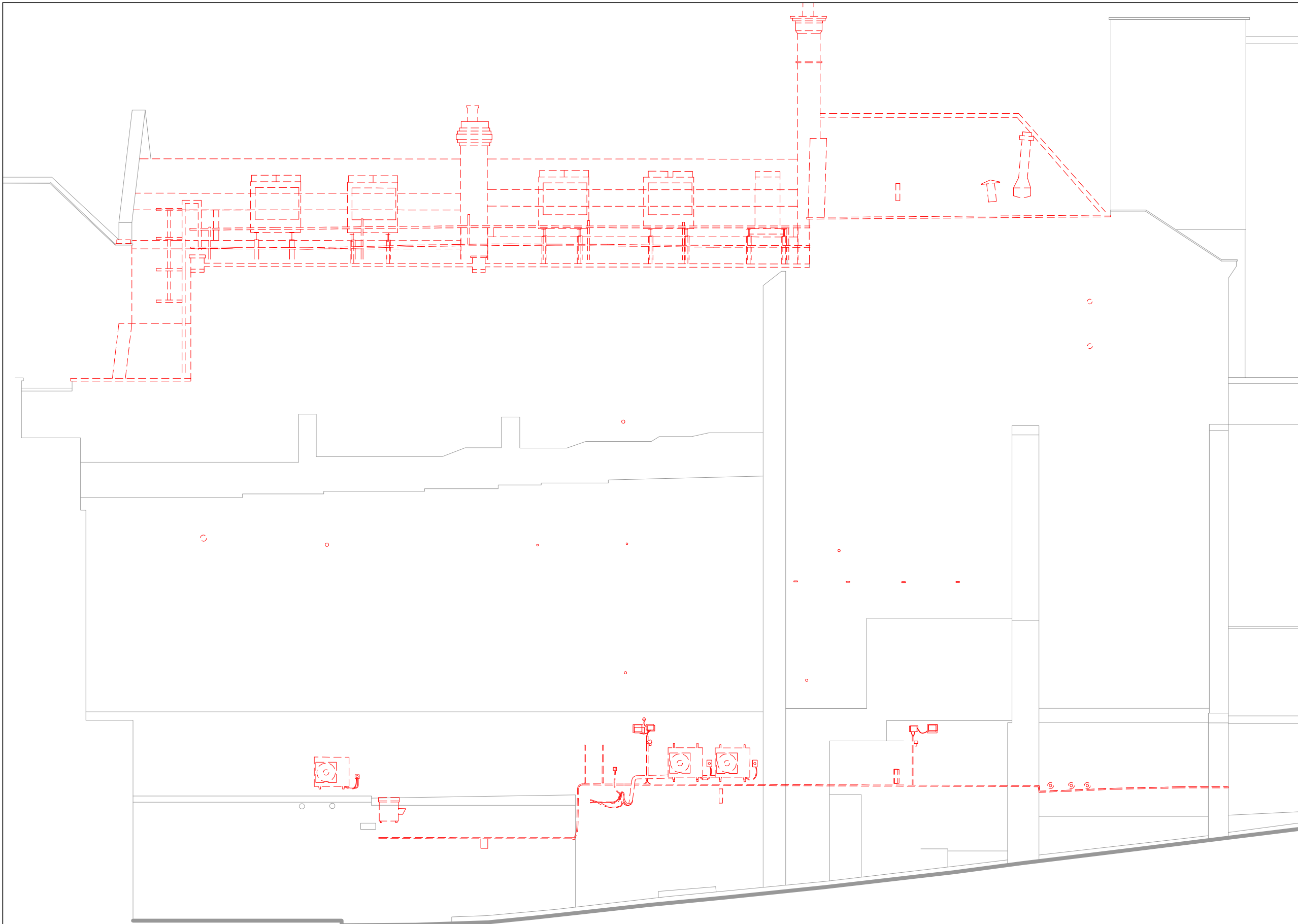
status		
FOR PLANNING		
BRIMELOW McSWEENEY ARCHITECTS		
<small>26 Great Queen Street, Covent Garden, London WC2B 5EL. tel: 020 7831 7835 - fax: 020 7831 7839 - email: admin@bm-architects.co.uk</small>		
project		
9-13 Grape Street, London, WC2H		
file		
Demolition Roof Plan		
scale	date	drawn
1:100@A3	07-06-16	RW
drawing no.	revision	
1530-0905		



20.000m AOD
 Front Elevation

Do not scale from this drawing, except for town planning purposes.
 Work to figured dimensions only.
 This drawing is the property of Brimelow McSweeney Architects and copyright is reserved by them.
 This drawing is issued on condition that it is not copied, used or disclosed by or to any unauthorised person without the prior written consent of Brimelow McSweeney Architects.
 The areas on the drawing have been measured directly from a CAD drawing and have no tolerances added or subtracted.
 The areas have been calculated in accordance with the Code of Measuring Practice, 6th Edition (2007) using the stated options NIA, GIA, GEA. They are approximate and relate to the likely areas of the building at the current state of the design. Any decisions to be made on the basis of these predictions, whether as to project viability, pre-letting, lease agreements and the like, should make allowance for the following:
 - Design development
 - Accurate site survey, site levels and dimensions need to be fully evaluated
 - Allowance for construction methods and building tolerances.
 - Local authority consents
 rev date drawn by chkd description
 / 13.06.16 RW SE ISSUED FOR PLANNING

status		
FOR PLANNING		
BRIMELOW McSWEENEY ARCHITECTS		
<small>28 Great Queen Street, Covent Garden, London WC2B 5EJ. tel: 020 7631 7835 - fax: 020 7631 7839 - email: admin@bm-architects.co.uk</small>		
<small>project</small> 9-13 Grape Street, London, WC2H		
<small>file</small> Demolition Front Elevation		
<small>scale</small> 1:100@A3	<small>date</small> 17-03-16	<small>drawn</small> RW
<small>drawing no.</small> 1530-0910	<small>revision</small> .	



Do not scale from this drawing, except for town planning purposes.
 Work to figured dimensions only.
 This drawing is the property of Brimelow McSweeney Architects and copyright is reserved by them.
 This drawing is issued on condition that it is not copied, used or disclosed by or to any unauthorised person without the prior written consent of Brimelow McSweeney Architects.
 The areas on the drawing have been measured directly from a CAD drawing and have no tolerances added or subtracted.
 The areas have been calculated in accordance with the Code of Measuring Practice, 6th Edition (2007) using the stated options NIA, GIA, GEA. They are approximate and relate to the likely areas of the building at the current state of the design. Any decisions to be made on the basis of these predictions, whether as to project viability, pre-letting, lease agreements and the like, should make allowance for the following:
 - Design development
 - Accurate site survey, site levels and dimensions need to be fully evaluated
 - Allowance for construction methods and building tolerances.
 - Local authority consents

rev	date	drawn by	chkd	description
/	13.06.16	RW	SE	ISSUED FOR PLANNING

Key
 - - - - Areas to be demolished

status **FOR PLANNING**

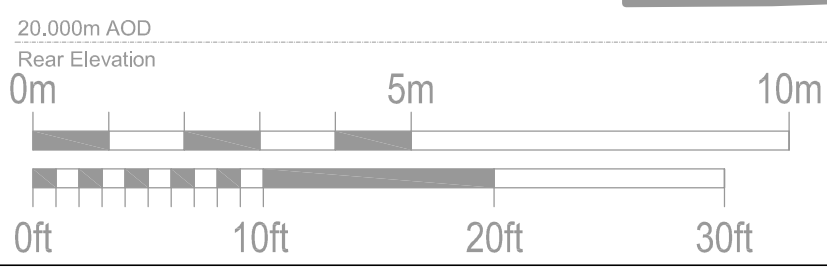
**BRIMELOW
 McSWEENEY
 ARCHITECTS** 
 26 Great Queen Street, Covent Garden, London WC2B 5EJ.
 tel: 020 7831 7835 - fax: 020 7831 7839 - email: admin@bm-architects.co.uk

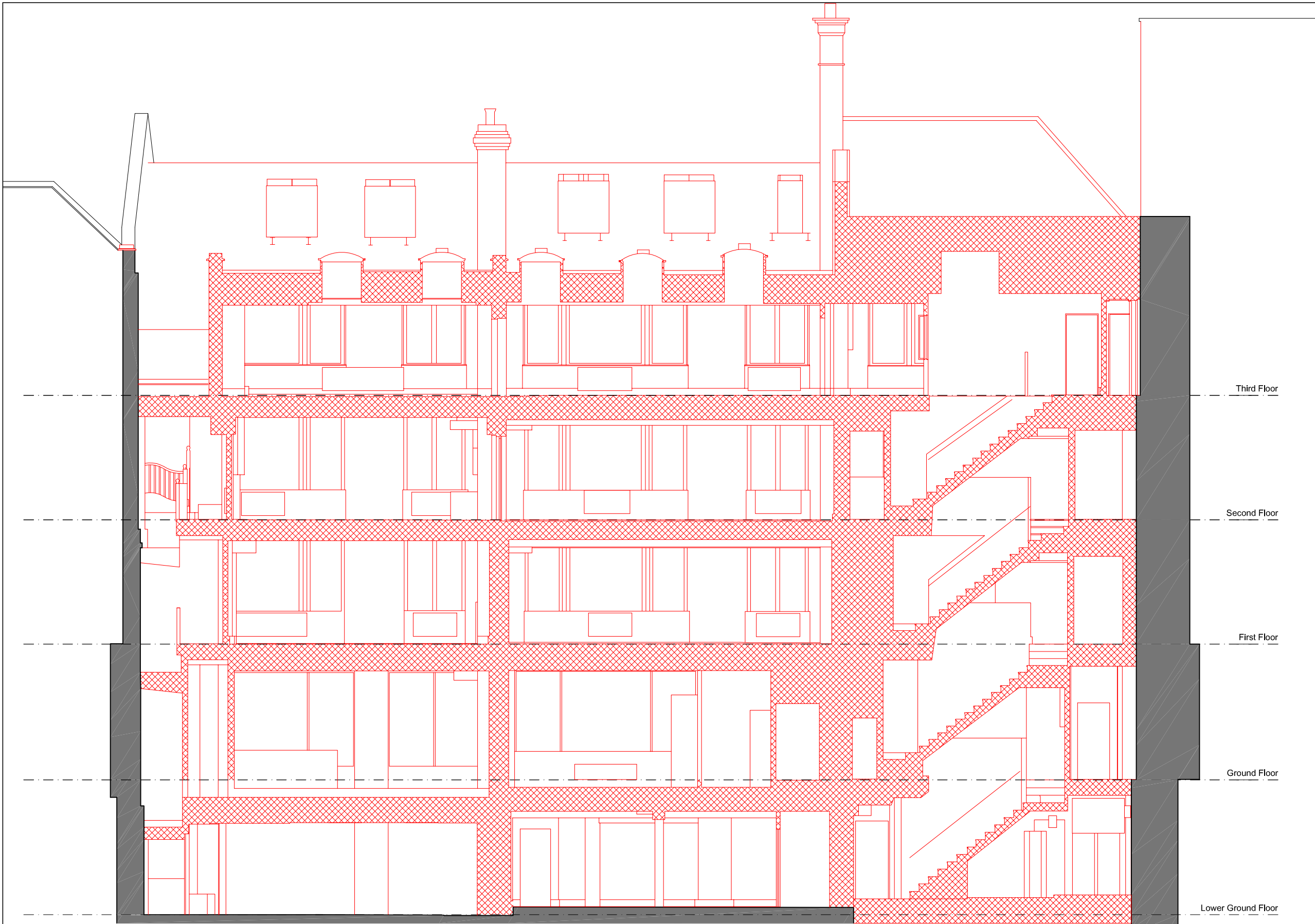
project
 9-13 Grape Street,
 London, WC2H

file
 Demolition Rear Elevation

scale	date	drawn
1:100@A3	17-03-16	RW

drawing no.	revision
1530-0911	.





Do not scale from this drawing, except for town planning purposes.
 Work to figured dimensions only.
 This drawing is the property of Brimelow McSweeney Architects and copyright is reserved by them.
 This drawing is issued on condition that it is not copied, used or disclosed by or to any unauthorised person without the prior written consent of Brimelow McSweeney Architects.
 The areas on the drawing have been measured directly from a CAD drawing and have no tolerances added or subtracted.
 The areas have been calculated in accordance with the Code of Measuring Practice, 6th Edition (2007) using the stated options NIA, GIA, GEA. They are approximate and relate to the likely areas of the building at the current state of the design. Any decisions to be made on the basis of these predictions, whether as to project viability, pre-letting, lease agreements and the like, should make allowance for the following:
 - Design development
 - Accurate site survey, site levels and dimensions need to be fully evaluated
 - Allowance for construction methods and building tolerances.
 - Local authority consents
 rev date drawn by chkd description
 / xx.xx.xx RW SE ISSUED FOR PLANNING

Third Floor



Second Floor

First Floor

Ground Floor

Lower Ground Floor

Key

-  Existing fabric to be removed
-  Fittings / stairs / features to be demolished

status **FOR PLANNING**

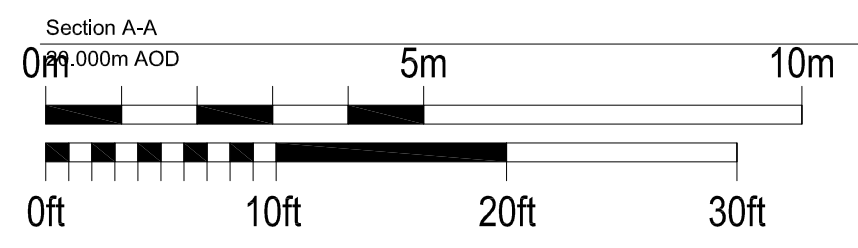
**BRIMELOW
 McSWEENEY
 ARCHITECTS** 
 26 Great Queen Street, Covent Garden, London WC2B 5EJ.
 tel: 020 7831 7835 - fax: 020 7831 7839 - email: admin@brm-architects.co.uk

project
 9-13 Grape Street,
 London, WC2H

file
 Demolition Section A-A

scale 1:100@A3 date 17-03-16 drawn RW

drawing no. 1530-0920 revision





Do not scale from this drawing, except for town planning purposes.
 Work to figured dimensions only.
 This drawing is the property of Brimelow McSweeney Architects and copyright is reserved by them.
 This drawing is issued on condition that it is not copied, used or disclosed by or to any unauthorised person without the prior written consent of Brimelow McSweeney Architects.
 The areas on the drawing have been measured directly from a CAD drawing and have no tolerances added or subtracted.
 The areas have been calculated in accordance with the Code of Measuring Practice, 6th Edition (2007) using the stated options NIA, GIA, GEA. They are approximate and relate to the likely areas of the building at the current state of the design. Any decisions to be made on the basis of these predictions, whether as to project viability, pre-letting, lease agreements and the like, should make allowance for the following:
 - Design development
 - Accurate site survey, site levels and dimensions need to be fully evaluated
 - Allowance for construction methods and building tolerances.
 - Local authority consents

rev date drawn by chkd description
 / 13.06.16 RW SE ISSUED FOR PLANNING

Key

Existing fabric to be removed

Fittings / stairs / features to be demolished

status		
FOR PLANNING		
BRIMELOW McSWEENEY ARCHITECTS <small>26 Great Queen Street, Covent Garden, London WC2B 5EJ. tel: 020 7831 7835 - fax: 020 7831 7839 - email: admin@brm-architects.co.uk</small>		
		
project		
9-13 Grape Street, London, WC2H		
file		
Demolition Section B-B		
scale	date	drawn
1:100@A3	17-03-16	RW
drawing no.	revision	
1530-0921		