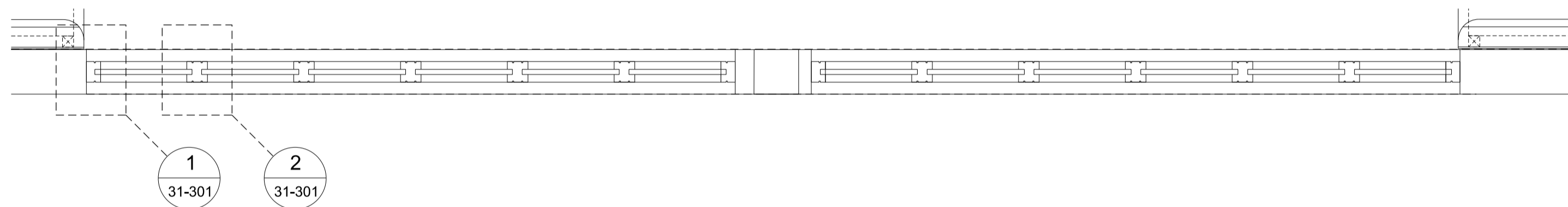


ELEVATION

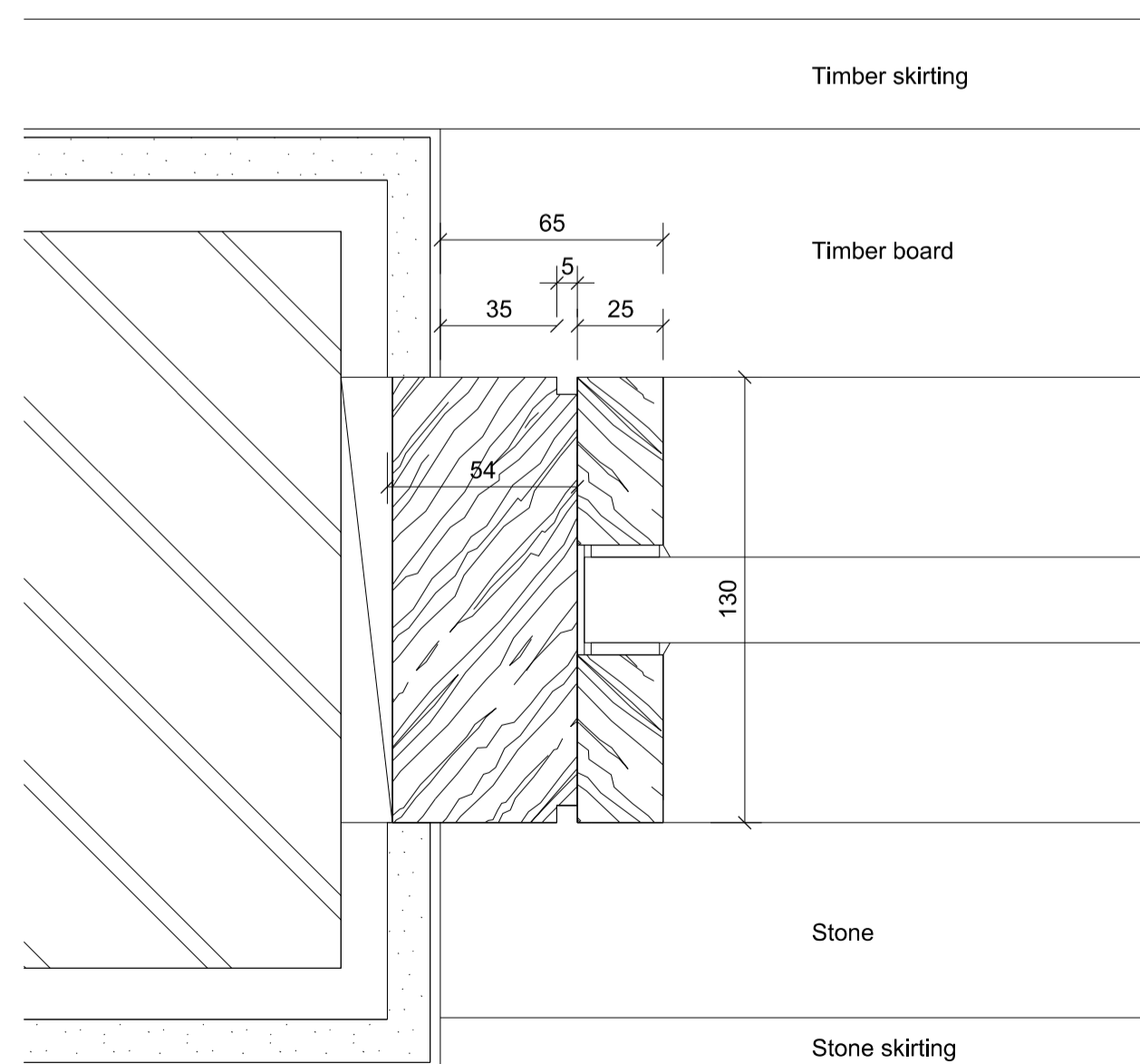
31-301 SCALE 1:20 @ A1



PLAN

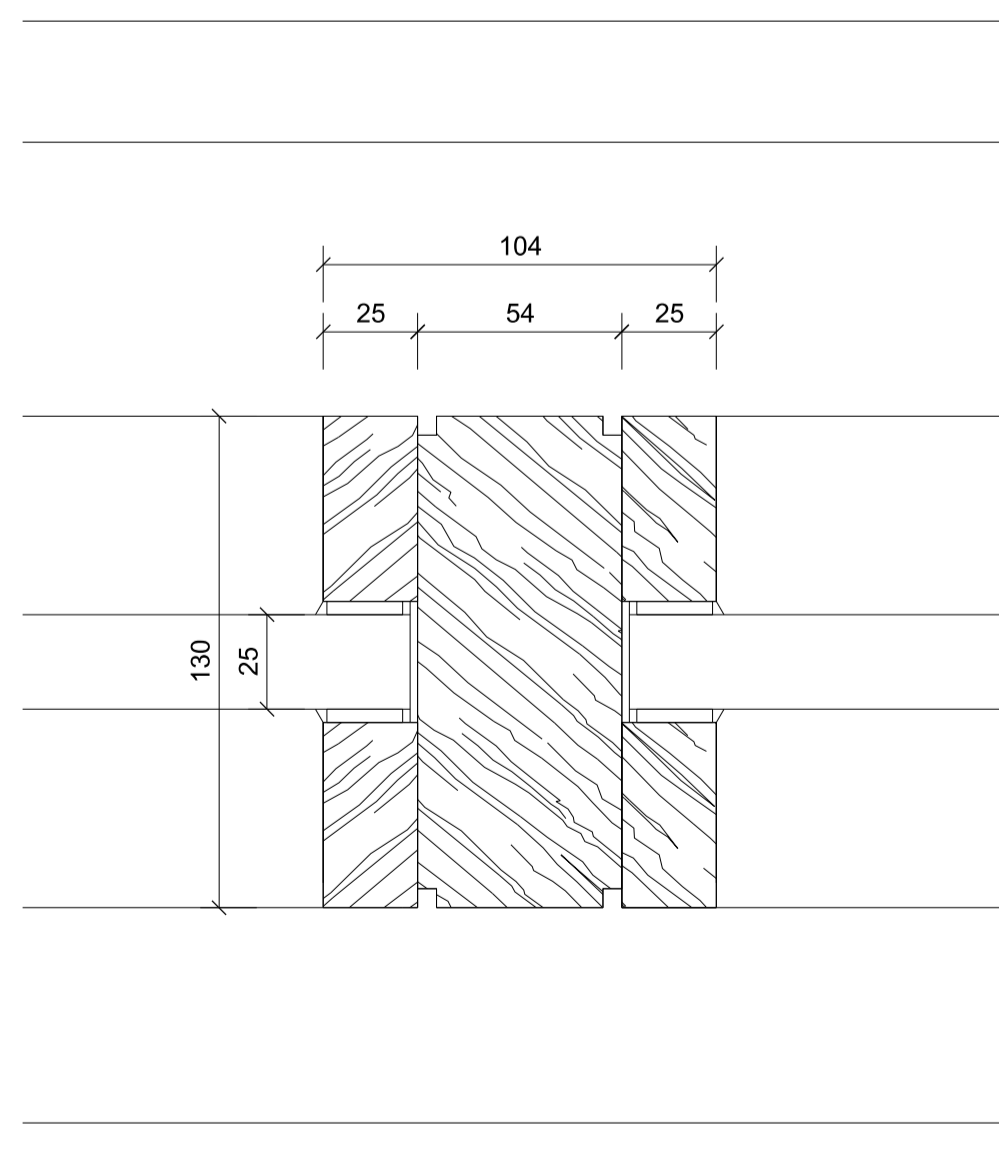
31-301 SCALE 1:20 @ A1

Glazing assembly to achieve 60' integrity and 60' insulation
 Glass: 25mm thick Contraflam 60
 Certificate # CF 811 A



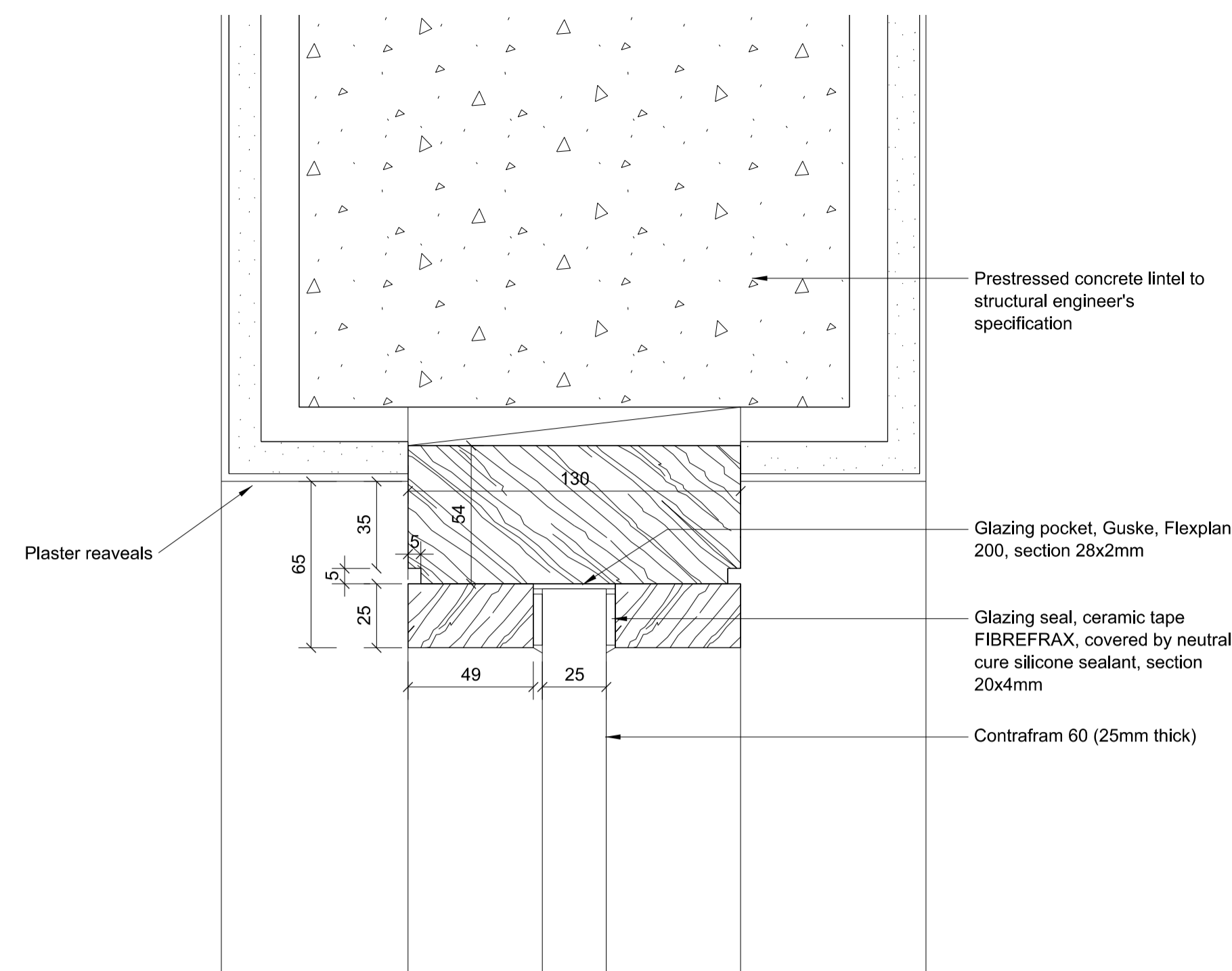
1 JAMB DETAIL

31-301 SCALE 1:2 @ A1



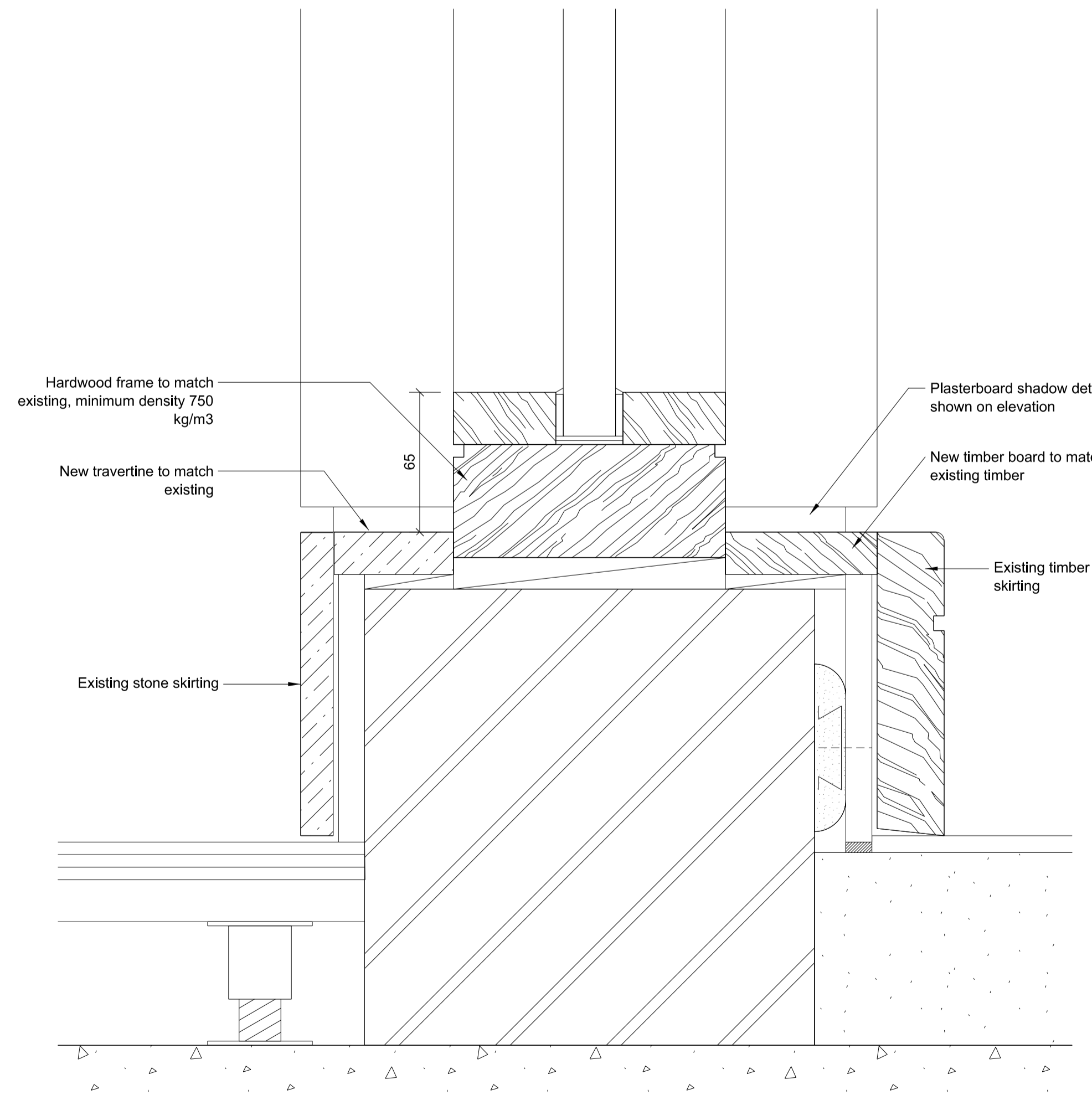
2 MULLION DETAIL

31-301 SCALE 1:2 @ A1



3 HEAD DETAIL

31-301 SCALE 1:2 @ A1



4 THRESHOLD DETAIL

31-301 SCALE 1:2 @ A1

Do not scale from this drawing.
 This drawing may not be based on an accurate survey.
 DMR do not accept responsibility for dimensions taken from this drawing.

The Contractor is to check all building and site dimensions prior to construction or production. All discrepancies and omissions on site must be reported to DMR for comment or approval prior to commencing works.

This drawing is to be read and checked in conjunction with engineer's and other specialist drawings & specifications.

The drawing and the works depicted are the copyright of this practice and may not be reproduced except by written permission.

REV	DATE	DESCRIPTION	BY	CHKD
T2	13/5/16	Issued for Tender	RB	JEM



**de
matos
ryan**

99-100 Turnmill Street
 London EC1M 5QP
 T 020 7336 0100
 mail@dematosryan.co.uk

PROJECT NAME
THE BRITISH LIBRARY
 Member and Conference Facilities
 96 Euston Road, London, NW1 2DB

TITLE
 ZONE 8: STAFF AREA
 NEW GLAZED SCREENS DETAILS

SCALE	DATE	BY	CHECKED
1:2 @A1	25/4/16	RB	JEM
1:4 @A3			

STATUS
TENDER

DOCUMENT No. 583_A_Z8_31-301
 REV T2