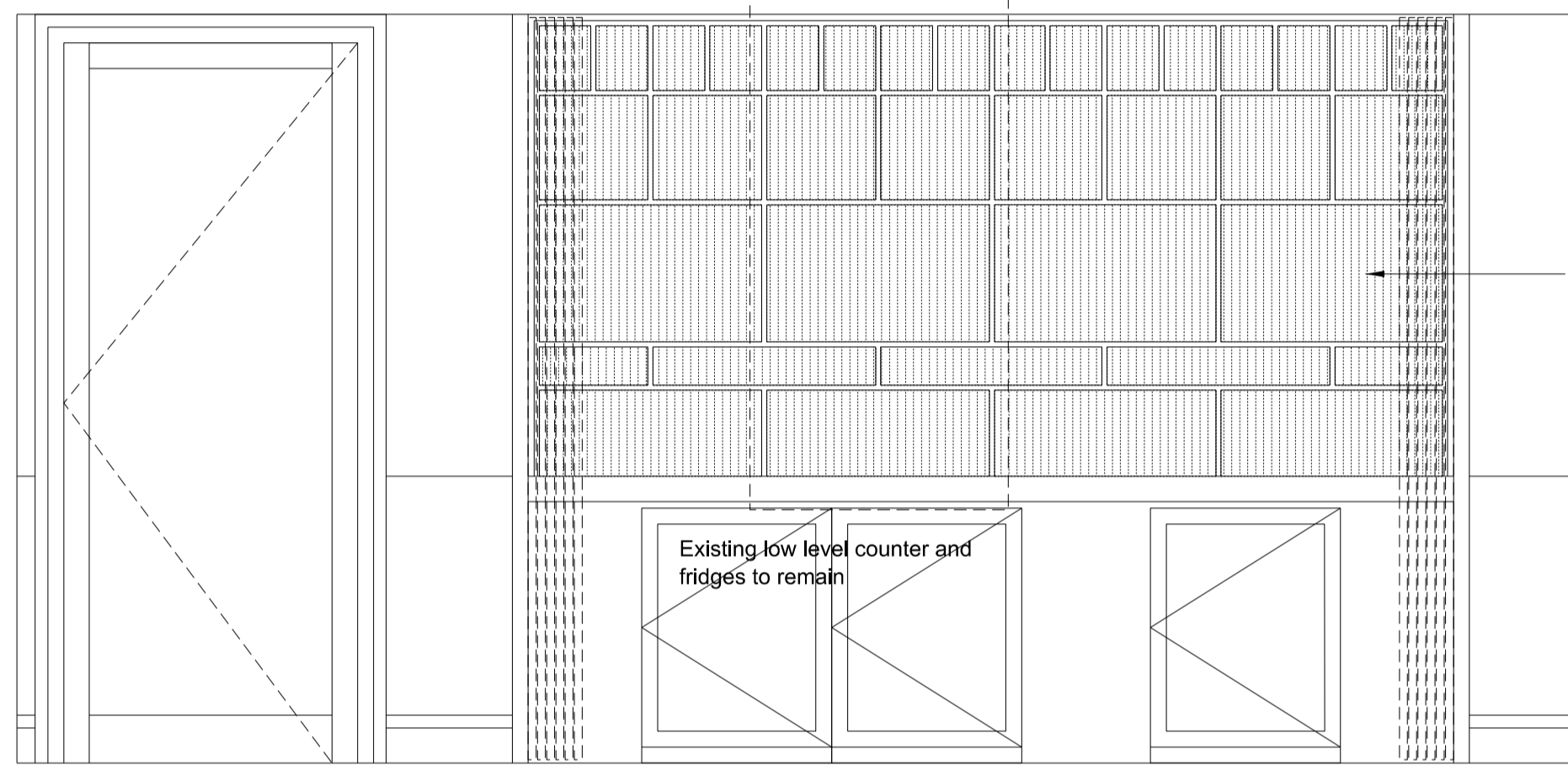


A REAR BAR ELEVATION WITH SHUTTERS CLOSED
SCALE 1:20

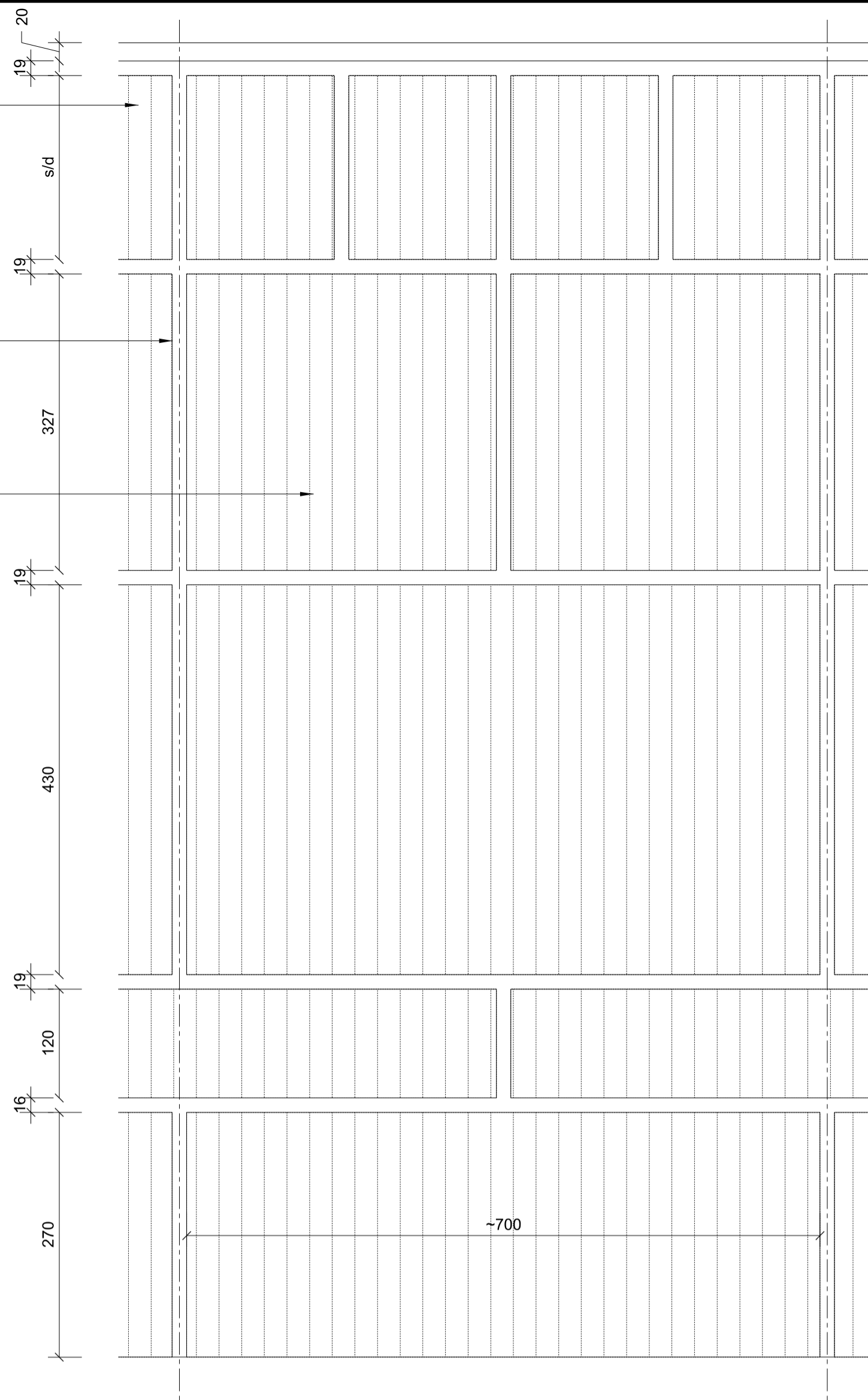


B REAR BAR ELEVATION WITH SHUTTERS OPEN
SCALE 1:20

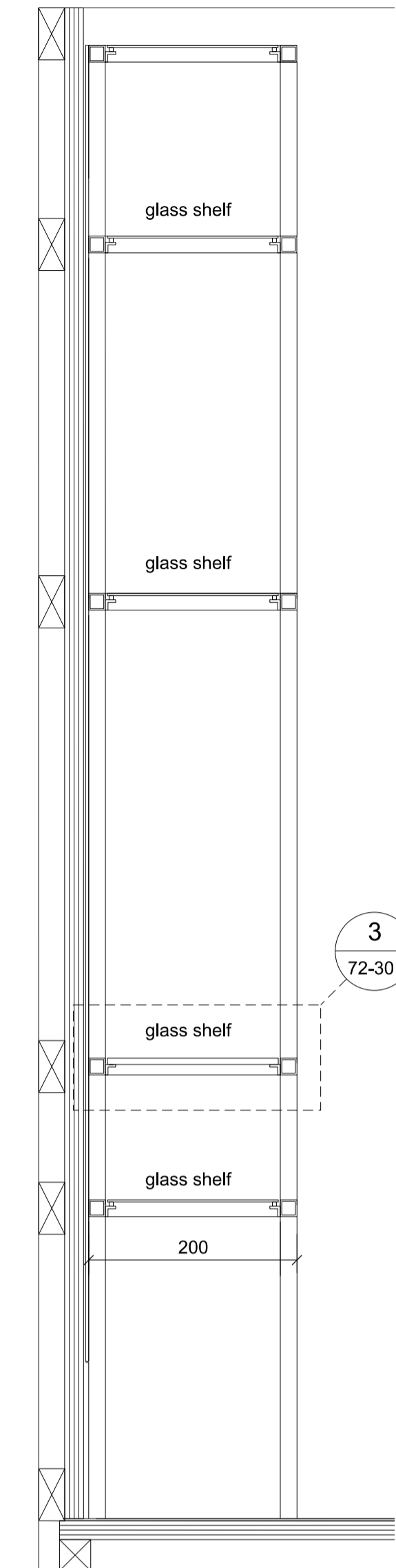
All measurements and unit sub-divisions to be confirmed on site and shown on shop drawings prior to construction.

19 x 19 x 1.5 (contractor design tbc) brass SHS welded and patinated with a Brass BMA (Bronze metal antique) P250 finish

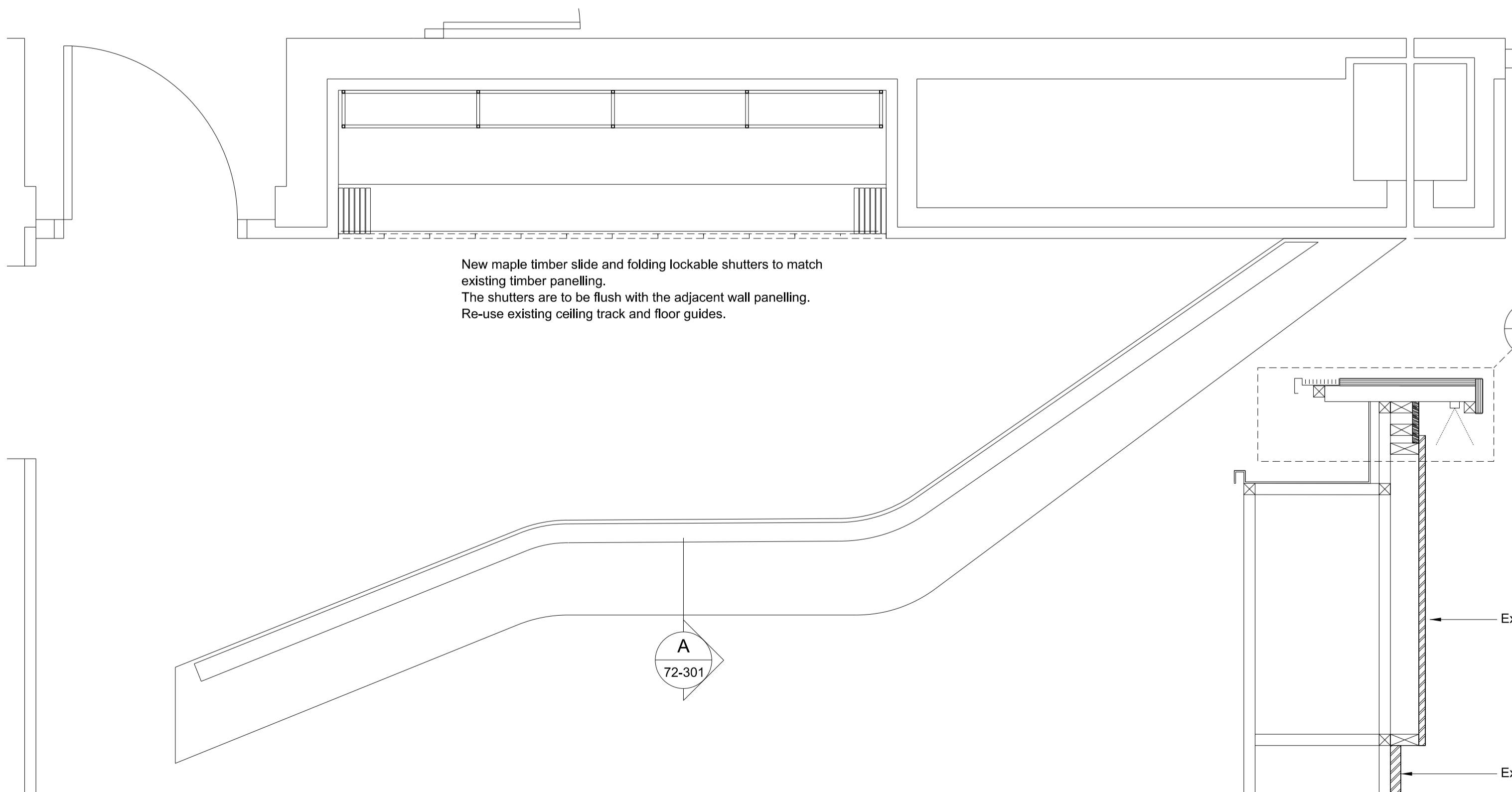
25mm wide (tbc) polished brass sheet strips butt jointed and bonded with adhesive onto a base of 18mm WBP plywood. Full survey and dimensions to be shown on drawings prior to construction to ensure equal lengths are achieved on unit. Form corner edges as L angles to conceal wallbuild up behind. Suitable sunconstruction to be provided to allow fixing onto structure behind.



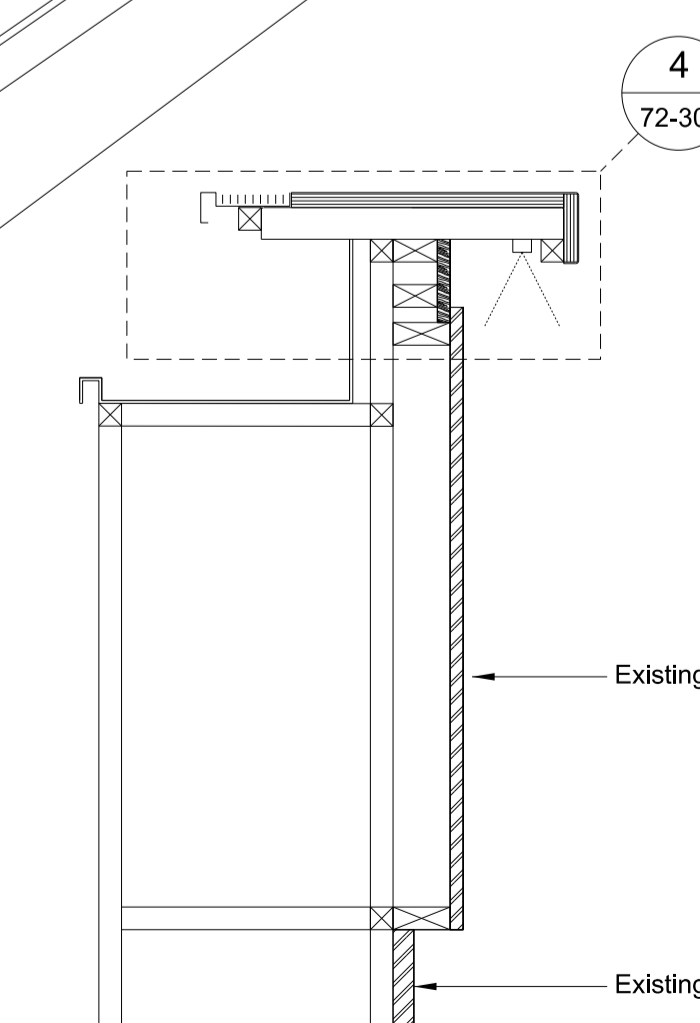
1 REAR BAR SHELVING ELEVATION
72-301 SCALE 1:5



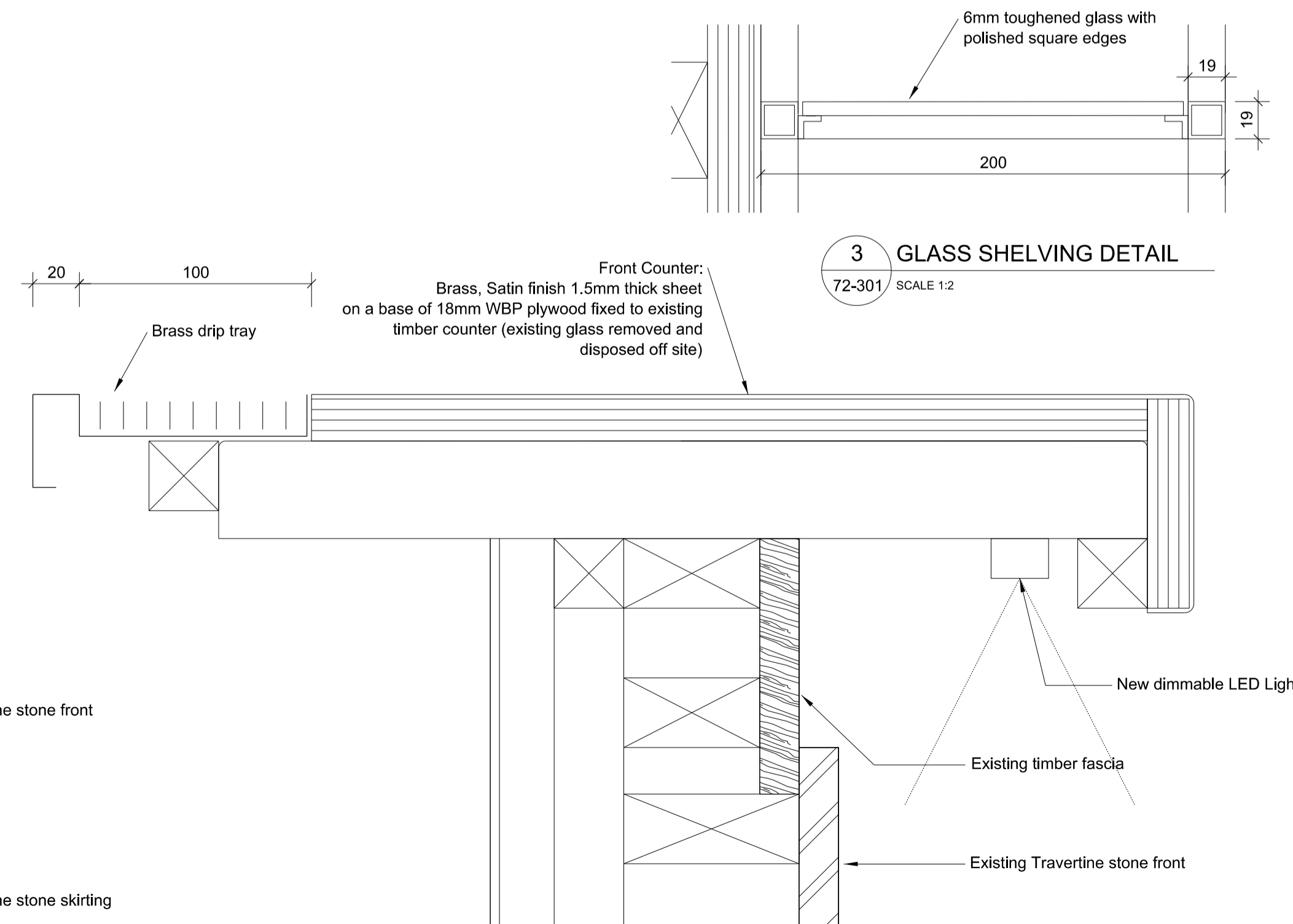
2 REAR BAR SHELVING SECTION
72-301 SCALE 1:5



CONFERENCE CENTER BAR: PLAN
SCALE 1:20



C FRONT COUNTER SECTION
SCALE 1:10



4 FRONT BAR COUNTER DETAIL
72-301 SCALE 1:2

3 GLASS SHELVING DETAIL
72-301 SCALE 1:2

Do not scale from this drawing. This drawing may not be based on an accurate survey. DMR do not accept responsibility for dimensions taken from this drawing.

The Contractor is to check all building and site dimensions prior to construction or production. All discrepancies and omissions on site must be reported to DMR for comment or approval prior to commencing works.

This drawing is to be read and checked in conjunction with engineer's and other specialist drawings & specifications.

The drawing and the works depicted are the copyright of this practice and may not be reproduced except by written permission.

| REV | DATE | DESCRIPTION | BY | CHKD |
|-----|------|-------------|----|------|
| | | | | |



de matos ryan

99-100 Turnmill Street
London EC1M 5QP
T 020 7336 0100
mail@dematosryan.co.uk

PROJECT NAME
THE BRITISH LIBRARY
Member and Conference Facilities
96 Euston Road, London, NW1 2DB

TITLE
ZONE 5 - CONFERENCE CENTRE
FIRST FLOOR
BAR DETAILS

| SCALE | DATE | BY | CHECKED |
|---------|-------------|----|---------|
| 1:20.5 | @A1 12/5/16 | RB | JEM |
| 1:40.10 | @A3 | | |

STATUS
TENDER

DOCUMENT No. 583_A_Z5_72-301
REV T1