

PROPOSED

REV A, 16.04.2015

Rear window louvers

REV B, 07.01.2016

Rear elevation amended

REV C, 04.07.2016

Notes added

Traditional white painted timber sash window with view control glass

All windows have glazing film fixed between two panes of glass and is therefore not removable/ lower part of window is fixed

Traditional white painted timber sash window with view control glass

All windows have glazing film fixed between two panes of glass and is therefore not removable/ lower part of window is fixed



PROPOSED FRONT ELEVATION 1:100@A3 / 1:50@A1

Traditional white painted timber sash window with view control glass

All windows have glazing film fixed between two panes of glass and is therefore not removable/ lower part of window is fixed

Traditional white painted timber sash window with view control glass

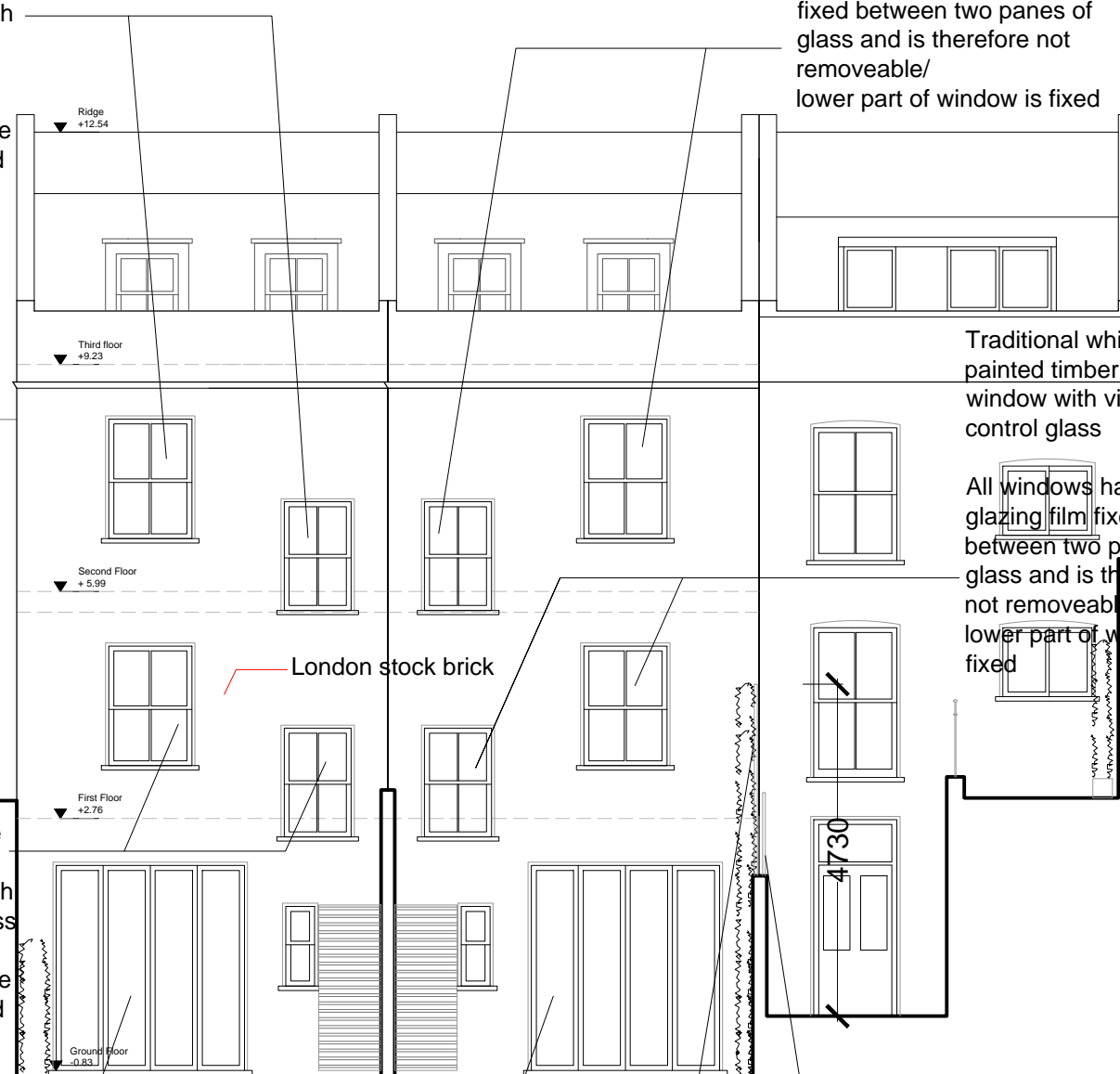
All windows have glazing film fixed between two panes of glass and is therefore not removable/ lower part of window is fixed

White painted timber folder doors

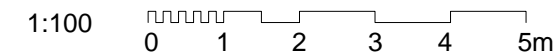
White painted timber folder doors

Additional screening with reinstate existing planting

Existing screen



PROPOSED REAR ELEVATION 1:100@A3 / 1:50@A1



Martin Evans Architects 18 Charlotte Road London EC2A 3PB tel 020 7729 2474	
JOB 137 Torriano Avenue London, NW5 2RX	
TITLE PROPOSED FRONT & REAR ELEVATION (WITH ADJACENT APPLICATION AT 101 BRECKNOCK ROAD)	
DATE	04.07.2016
SCALE	1:100@A3/1:50@A1
DRAWN	A.L.
DRAWING NO. BRE-PL-GA-12 C	