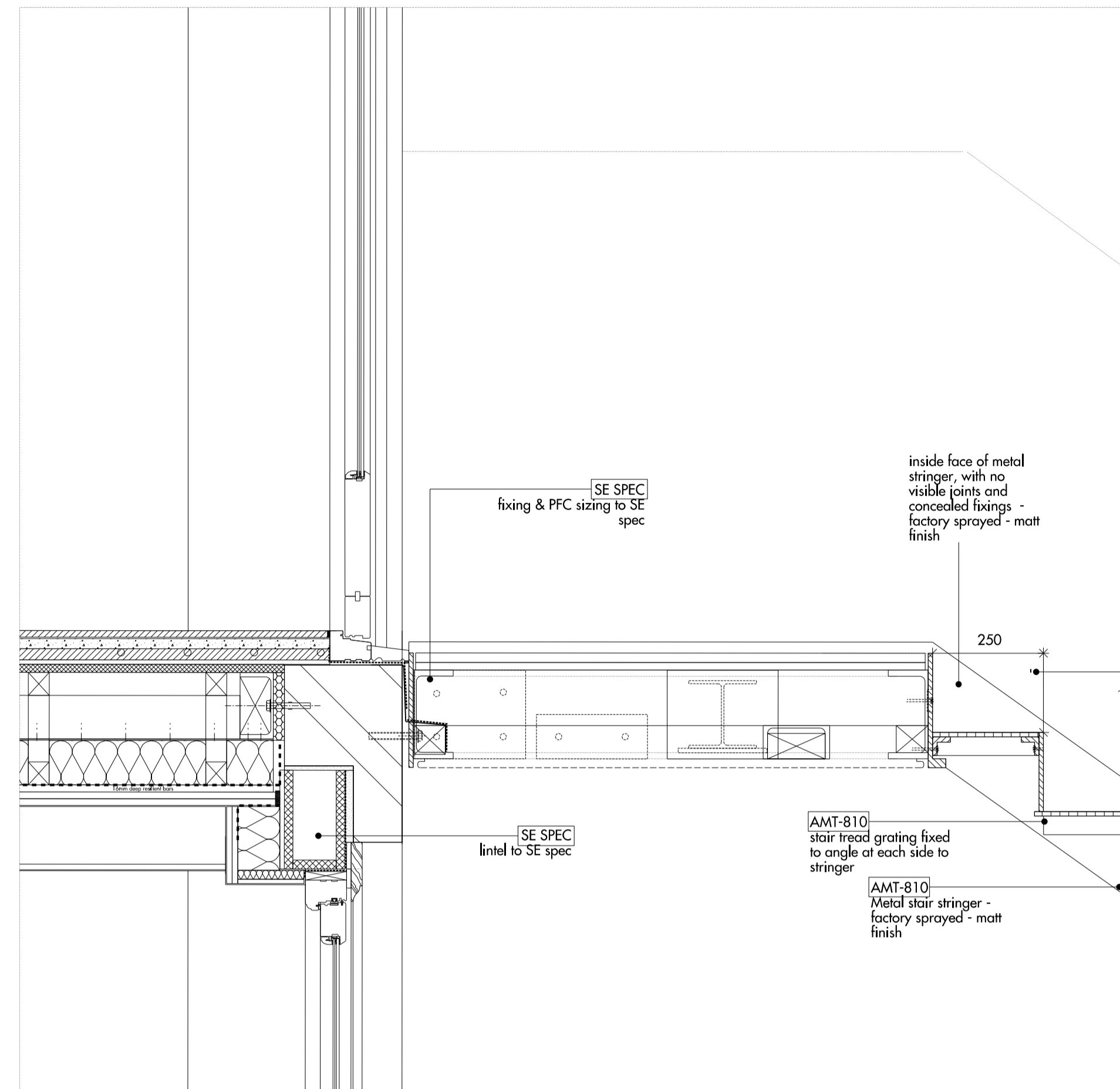
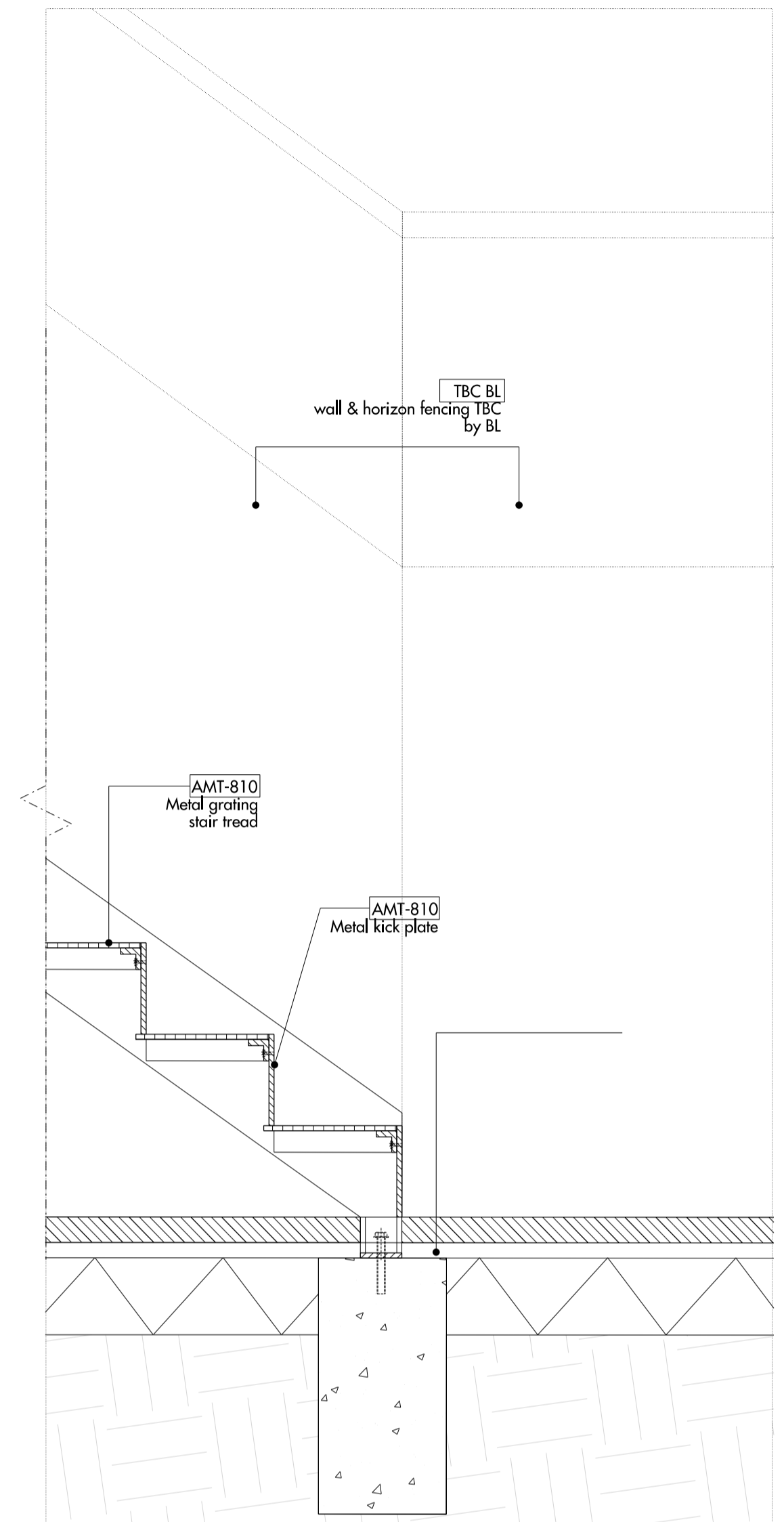


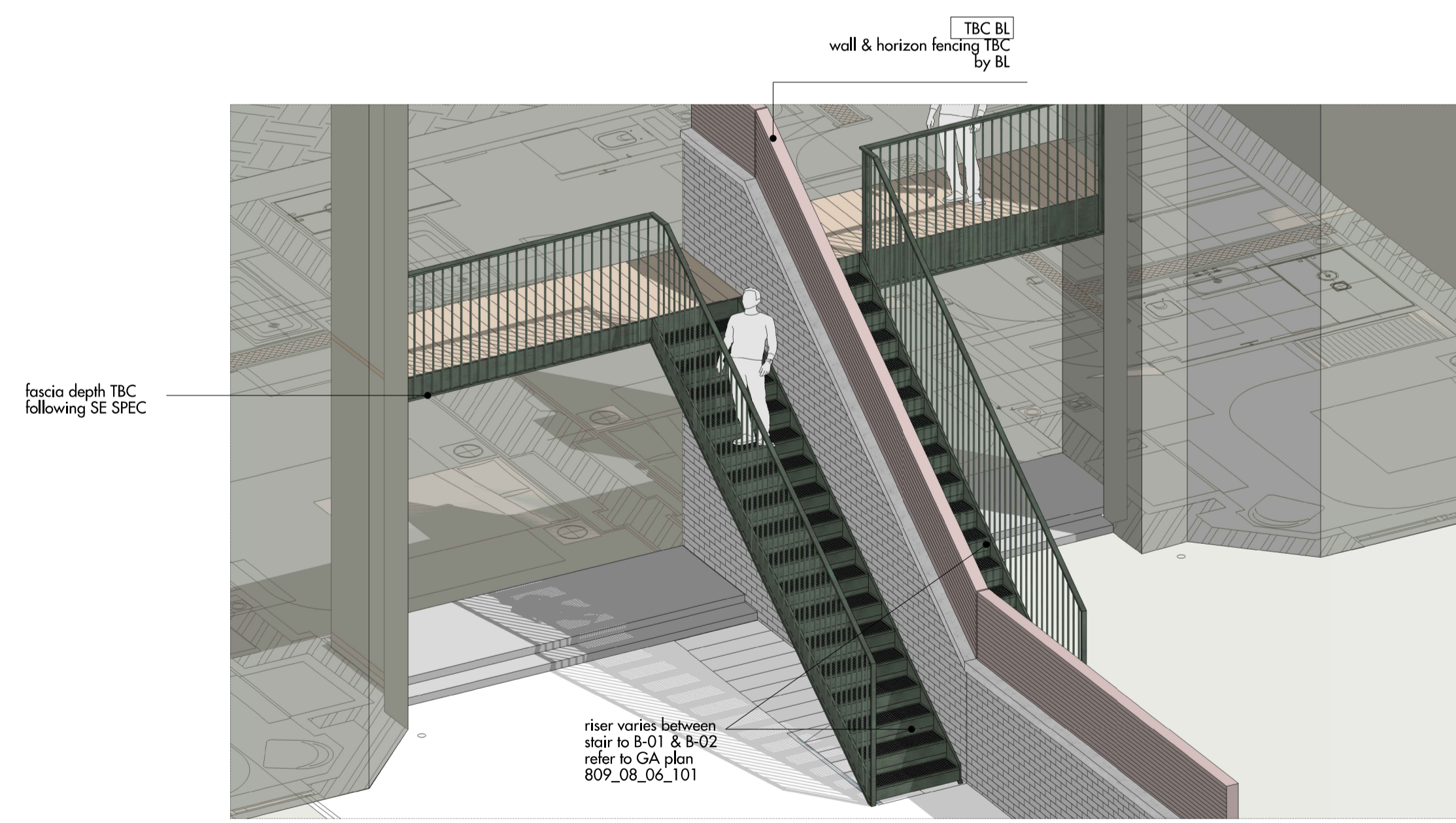
01 SECTION  
Lower duplex rear balcony



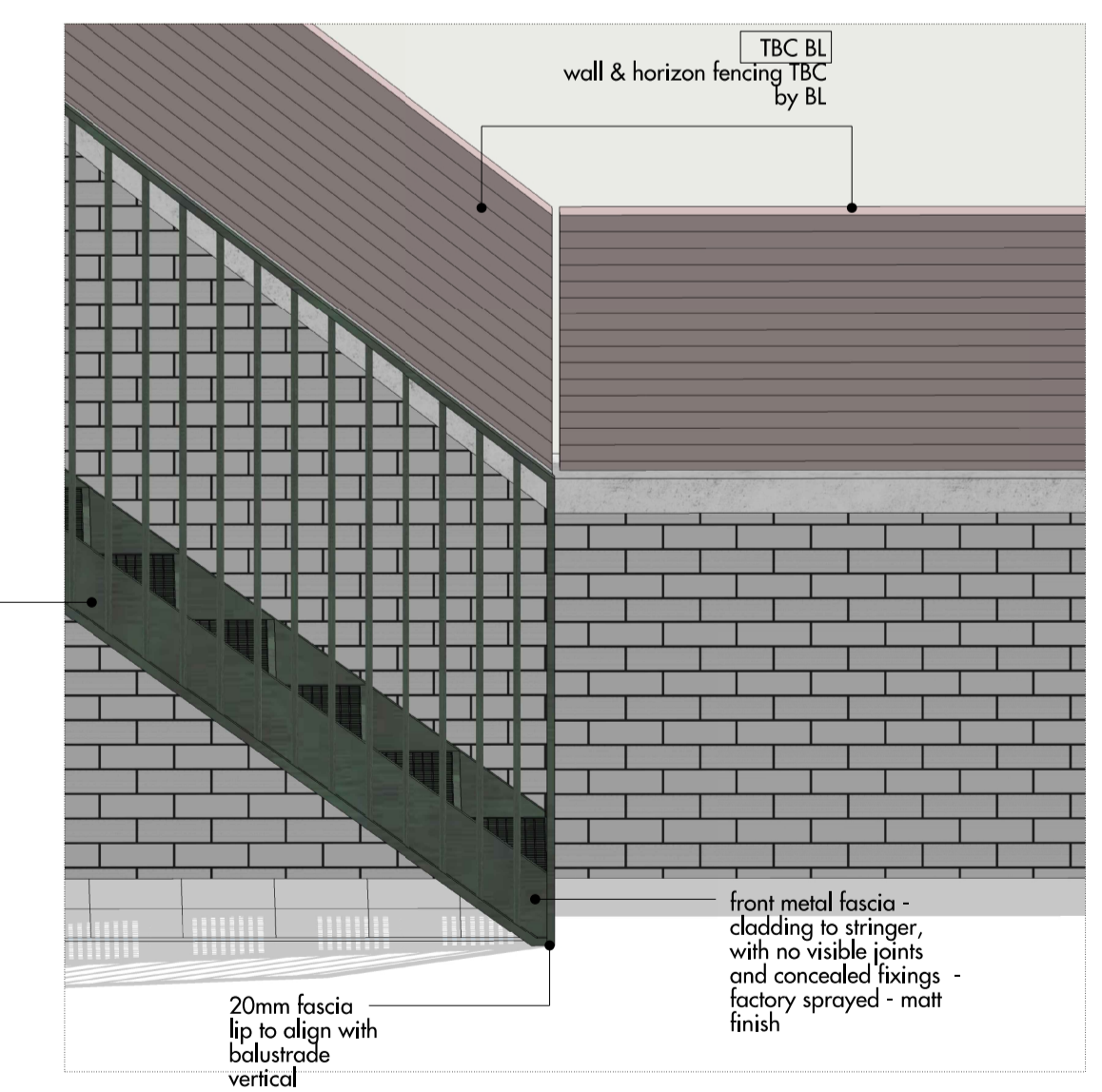
02 SECTION  
Lower duplex rear balcony and stair head



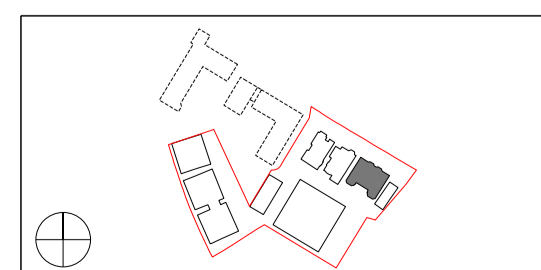
03 SECTION  
Lower duplex rear stair base



04 MODEL VIEW  
Lower duplex rear balcony and stair



05 MODEL VIEW  
Lower duplex rear balcony and stair - base



Do not scale from this drawing. Use figured dimensions only. Figured dimensions are in millimetres. All levels are in metres. All dimensions and levels shall be verified on site before proceeding with works. Detailed site survey to be carried out to verify positions and level relationships with site features and ordnance survey. The Architect must be notified of any discrepancy. Where building components are described in the specification as Descriptive Specification - (Contractor Design) elements shown on this drawing pertaining to those components are to be read as 'Issued for Design Intent only'.  
Allies & Morrison is not responsible for any errors caused by the transmission, translation, software or computer systems. Allies & Morrison is not responsible for nor shall be liable for the consequences of any use made of the drawings or models other than that for which they were produced by Allies & Morrison for the Client.

REV	DATE	DESCRIPTION	CKD	REV	DATE	DESCRIPTION	CKD
T1	10.06.2016	ISSUED TO BARRATT LONDON FOR TENDER	NR				
T2	04.07.2016	ISSUED TO LPA FOR PLANNING CONDITION APPLICATION	NR				

Allies and Morrison  
85 Southwark Street  
London SE1 0HX  
020 7921 0100  
020 7921 0101  
info@alliesandmorrison.co.uk  
A&M JOB NO: 809

KIDDERPORE AVENUE - BLOCK B  
LOWER DUPLEX REAR BALCONY & STAIR  
AMT SYSTEMS  
809\_08\_34\_401  
SCALE: 1:10 @A1