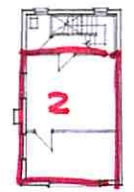


- ① STORE
- ② OFFICE
- ③ STORAGE ON RAMP



First Floor Plan



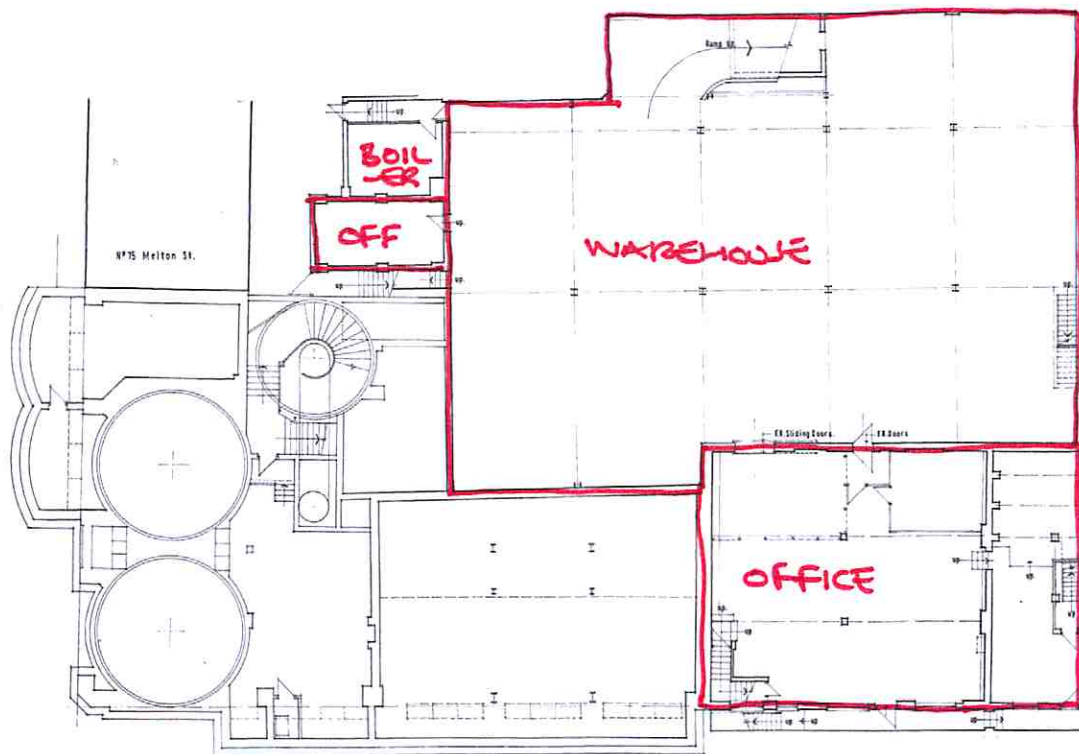
Second Floor Plan

GROUND FLOOR PLAN.

93-103 Drummond St.
London, N.W.1.

Ground Floor Plan.

Drawn by	d.c.l.	Scale	1:100
Date		July	81
Drawn by	DS	02	J+



BASEMENT PLAN.

93-103 Drummond St.
London, N.W.1.

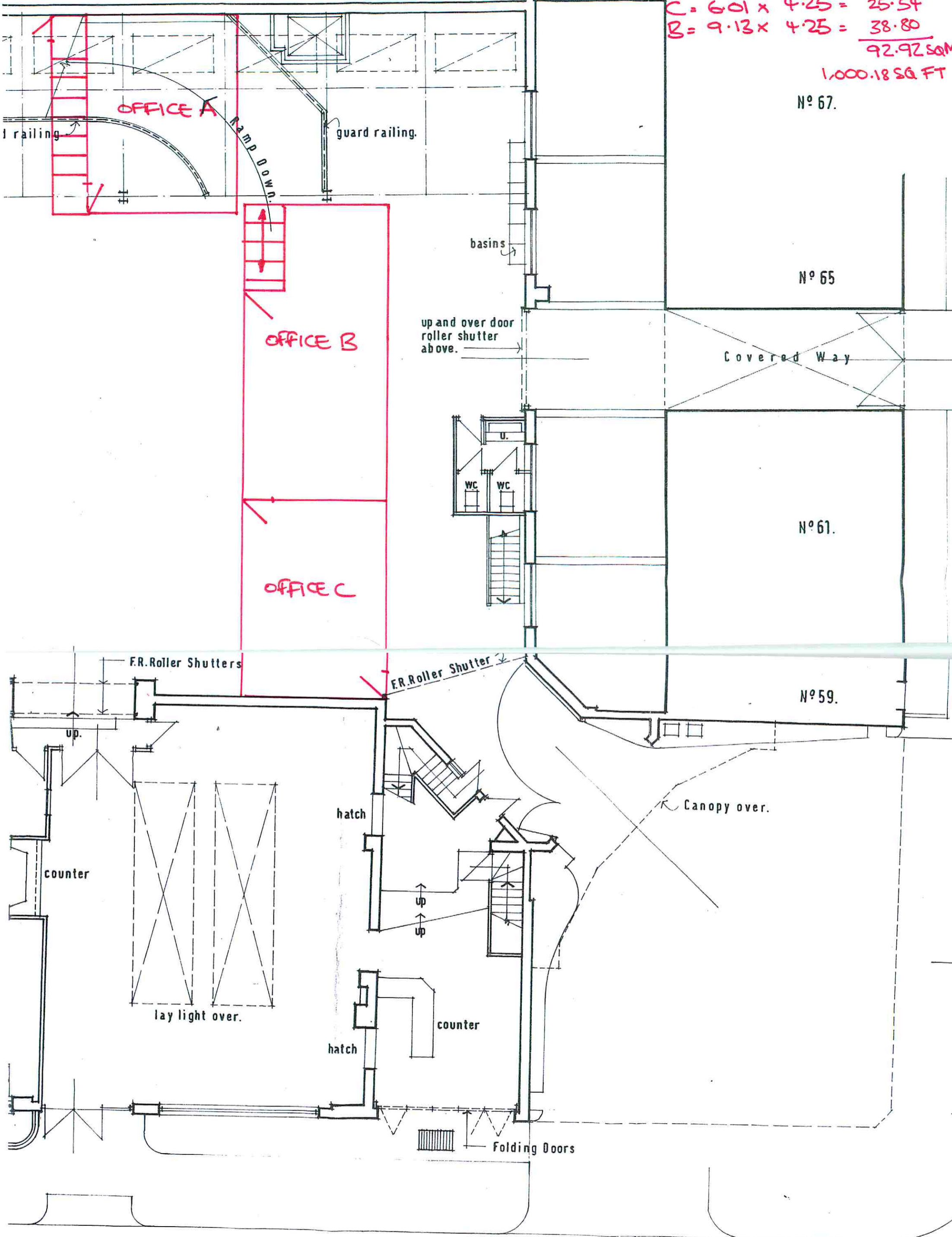
Basement Plan.

d.c.l. 1:100
July 81

DS	01	
job reference number	sheet number	revision

FIRST FLOOR

$A = 4.67 \times 6.12 = 28.58$
 $C = 6.01 \times 4.25 = 25.54$
 $B = 9.13 \times 4.25 = 38.80$
92.92 SQM
 1,000.18 SQ FT



Nº 67.

Nº 65

Nº 61.

Nº 59.

Drummond Street