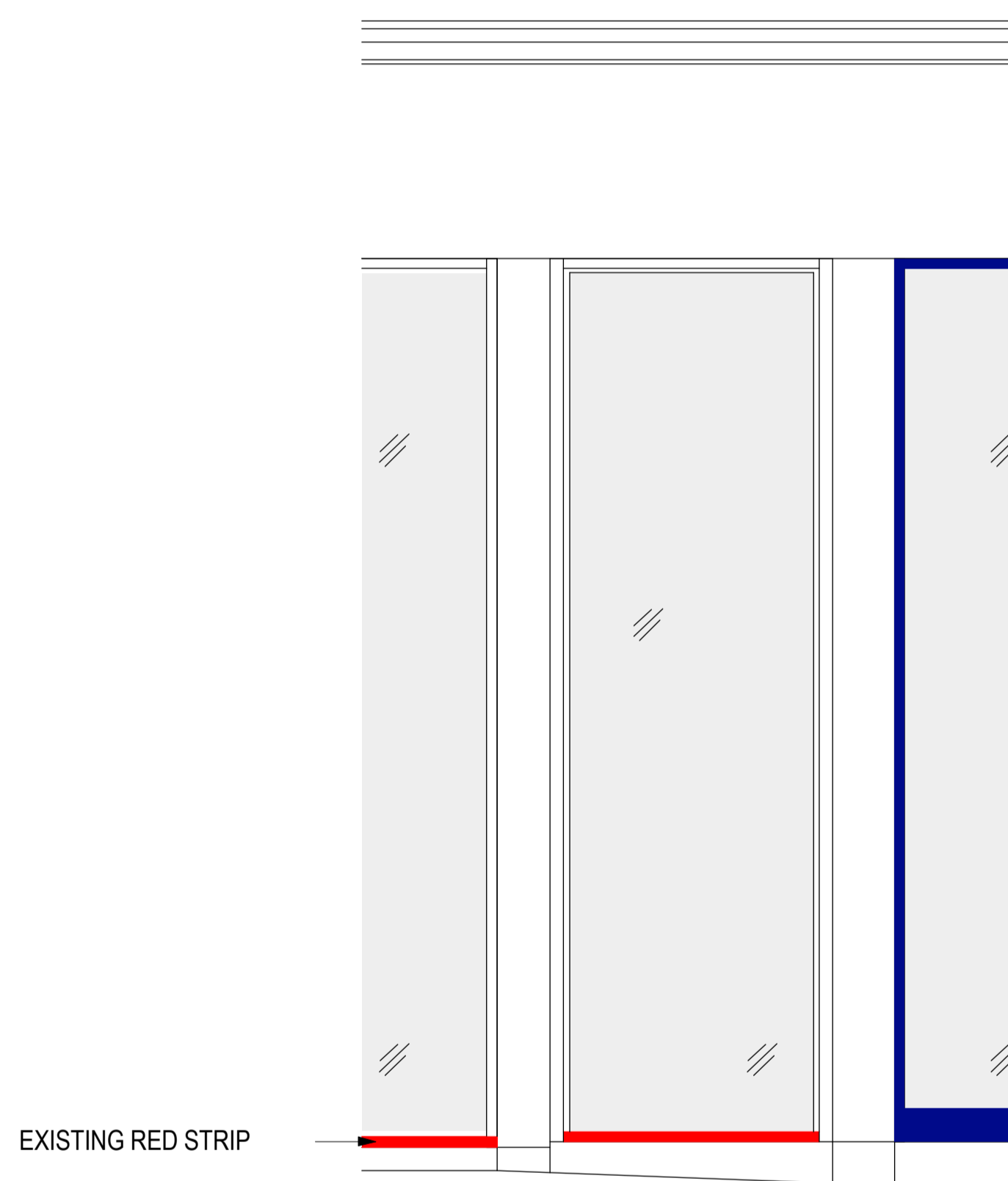


CONTRACTORS MUST CHECK ALL DIMENSIONS ON SITE.
ONLY FIGURED DIMENSIONS ARE TO BE WORKED FROM.
DISCREPANCIES MUST BE REPORTED TO THE ARCHITECT
BEFORE PROCEEDING.

© THIS DRAWING IS COPYRIGHT



EXISTING RED STRIP

REVISIONS A Non planning items removed for clarity. 29 06 16		
PROJECT 225-226 TOTTENHAM COURT ROAD, LONDON, W1T 7QF		DRAWING Proposed Corner Elevation PLANNING
SCALE @ A1 1:25	SCALE @ A3 1:50	DATE May 2016
DRAWN BY HB/ London	CHECKED -	STATUS -
PROJECT NUMBER 16 073		DRAWING NUMBER PA 12
		REVISION A


 cardiff • edinburgh • london • sheffield
 The Lux Building
 2-4 Hoxton Square
 London N1 6NU
 020 7613 2244

© This drawing remains the Copyright of Four Architecture and Design, and may not be reproduced in whole or in any part without prior written permission.
 NOTE:
 All proprietary goods and materials are to be fitted in accordance with manufacturer's instructions, Codes of Practice and British Standards. All dimensions to be verified by the Contractor on site. Do not scale drawings, work to figured dimensions only.

CLIENT


TOTTENHAM COURT ROAD, LONDON
 Branch Transformation Programme