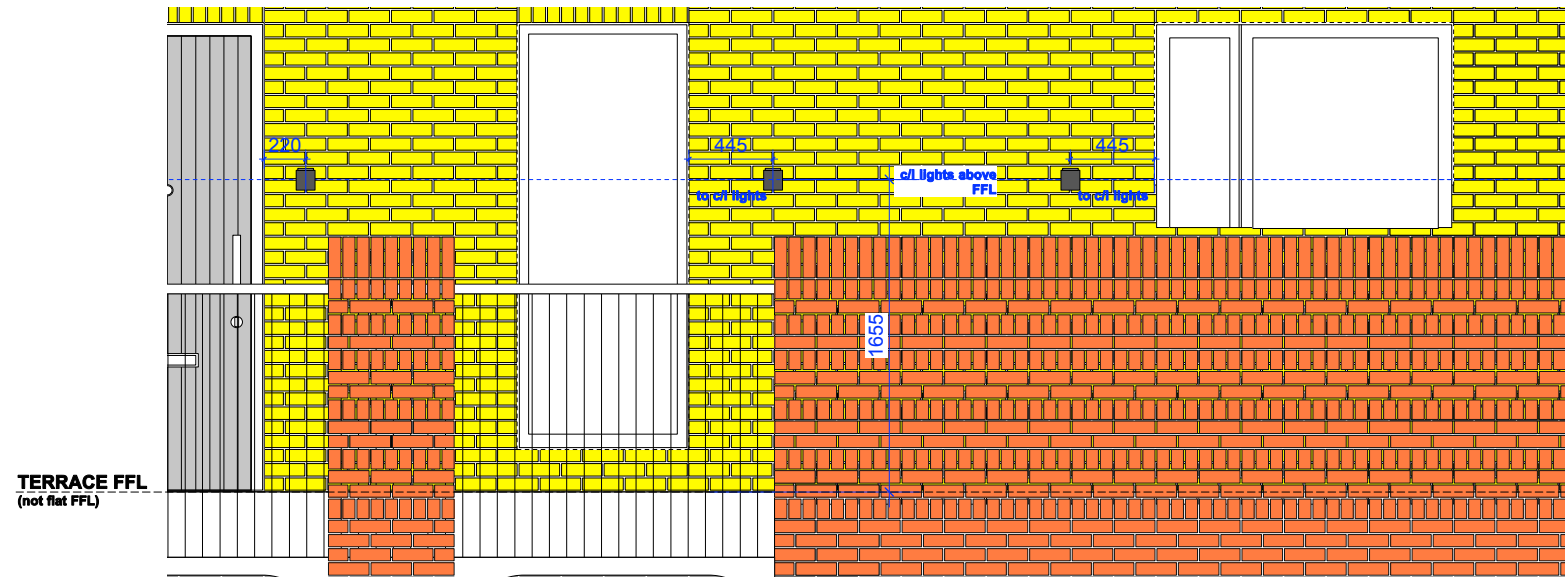
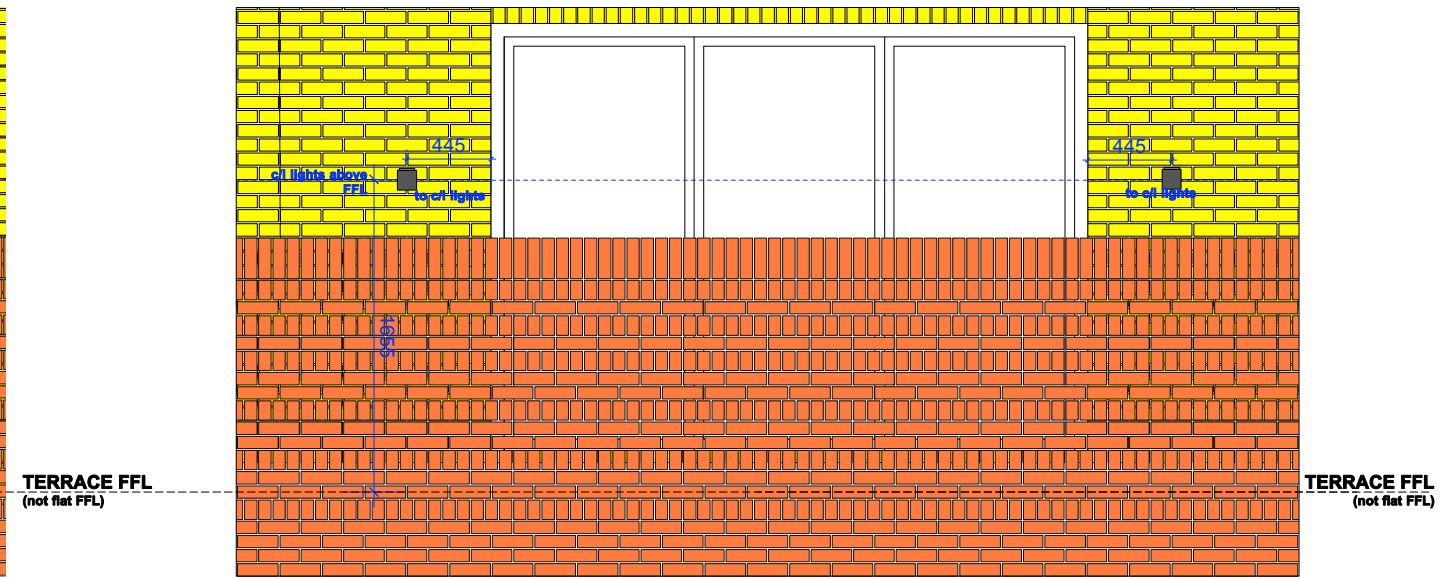


# BLOCK 2 TERRACE & BALCONY LIGHTING SETTING OUT



**CLOSE UP ELEVATION 08**  
COURTYARD SECTION  
WEST ELEVATION & EAST ELEVATION (handed)



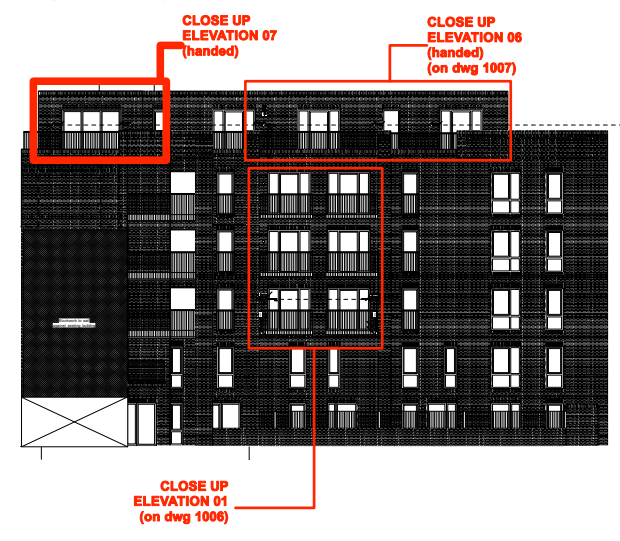
**CLOSE UP ELEVATION 07**  
WEST ELEVATION &  
EAST ELEVATION (handed)



**WEST ELEVATION**



**NORTH ELEVATION**



**EAST ELEVATION**



**COURTYARD EAST ELEVATION**  
PART SECTION (J-J)

**COURTYARD WEST ELEVATION**  
PART SECTION (H-H)

PRODUCT : KSR ref: 7139 Moby GX53 Low Energy Single Wall Light Die Cast Aluminium body.

COLOUR : Anthracite

To be set out as shown above.



Revisions:  
- 20.04.16 - First Issue

Notes:  
1. do not scale from this drawing  
2. for information purposes only; exact boundaries as per legal negotiations



**MatthewLloydArchitects** LLP  
1 The Hangar  
Perseverance Works  
38 Kingsland Road  
London E2 8DD  
T 020 7613 1934  
email: mail@matthewlloyd.co.uk  
www.matthewlloyd.co.uk

<b>CONSTRUCTION</b>		©2014
Original Sheet Size		<b>A1</b>
0 0.5m 1m		
Date:	Scale:	Drawn by:
APR 16	1:20@A1	
Project: Bourne Estate South for Higgins Construction PLC		
Drawing title: BLOCK 2 Balcony lighting setting out (sheet 3 of 4)		
Reference:	Dwg No:	Rev:
<b>BE14</b>	<b>1108</b>	