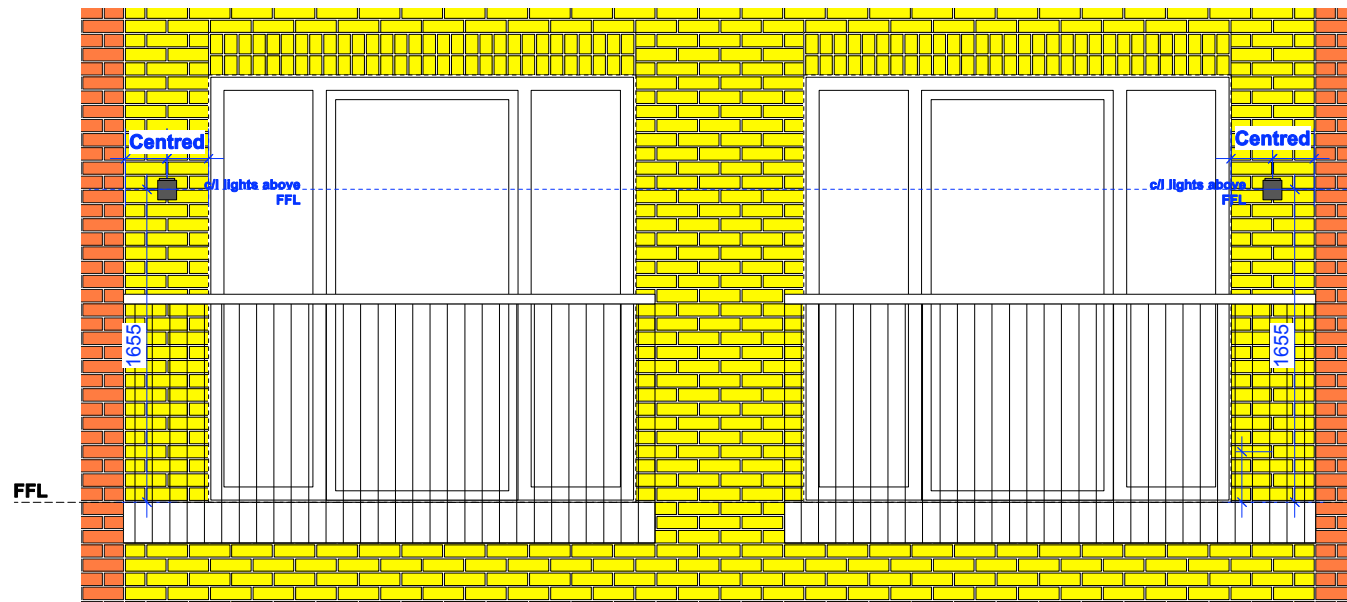
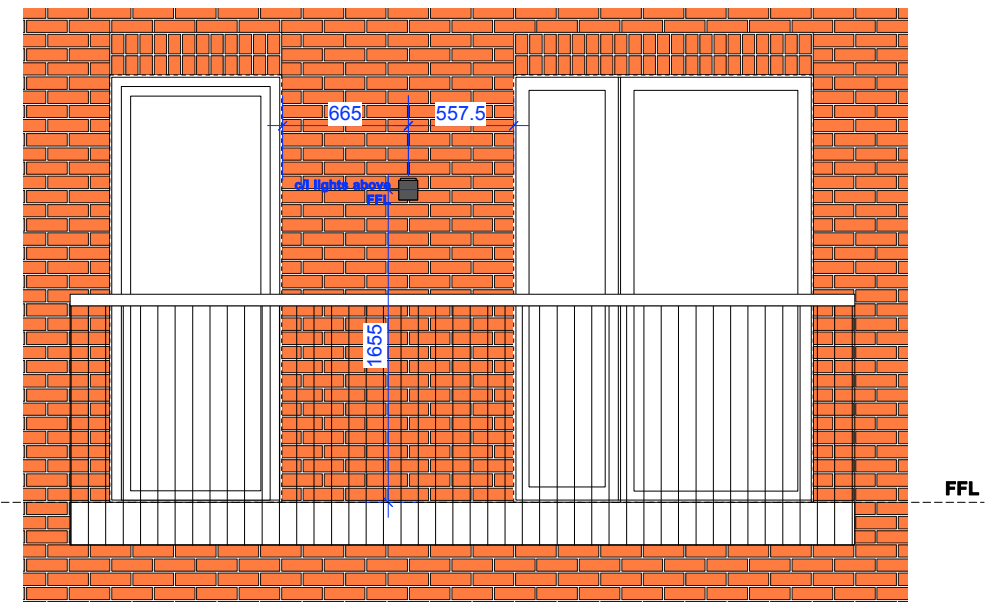


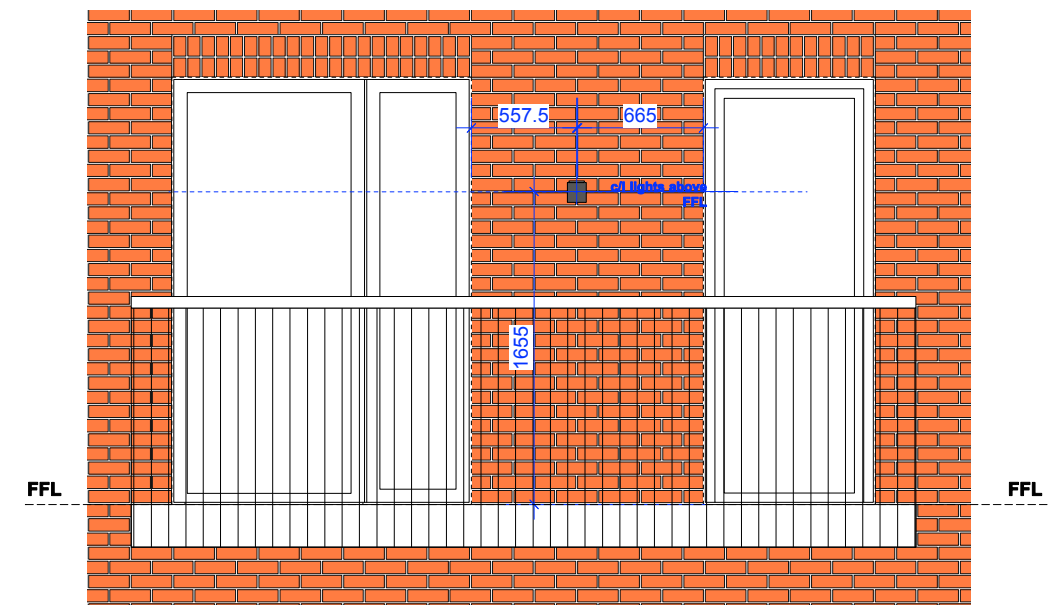
BLOCK 2 BALCONY LIGHTING SETTING OUT



CLOSE UP ELEVATION 01 (2nd, 3rd and 4th floors)
EAST AND WEST ELEVATIONS



CLOSE UP ELEVATION 02 (2nd, 3rd and 4th floors)
NORTH ELEVATION



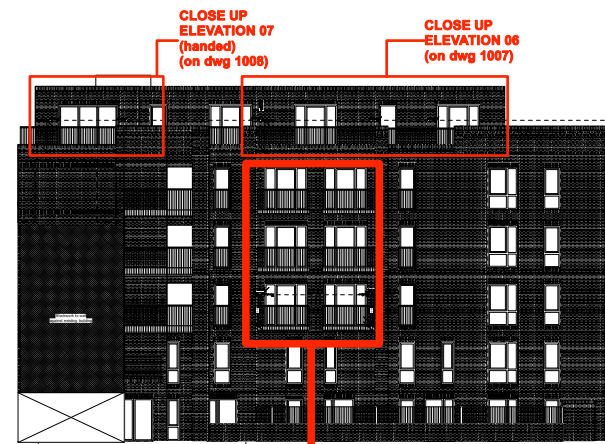
CLOSE UP ELEVATION 03 (2nd, 3rd and 4th floors)
NORTH ELEVATION



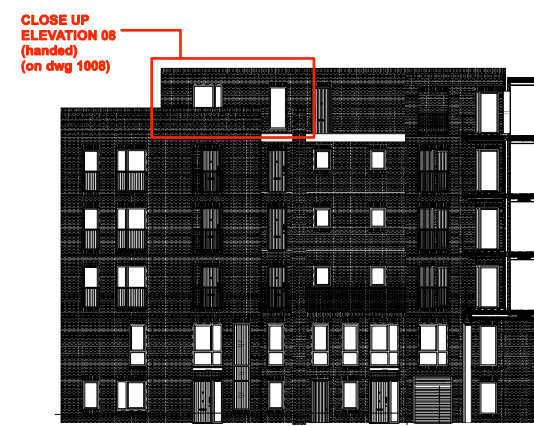
WEST ELEVATION



NORTH ELEVATION



EAST ELEVATION



COURTYARD EAST ELEVATION
PART SECTION (J-J)



COURTYARD WEST ELEVATION
PART SECTION (H-H)

PRODUCT : KSR ref: 7139 Moby GX53 Low Energy Single Wall Light Die Cast Aluminium body.

COLOUR : Anthracite

To be set out as shown above.



WALL LIGHT
PRODUCT IMAGE

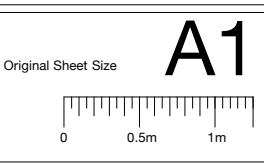
A 20.04.16 - Additional key elevations added, light fitting amended and position adjusted to suit.
- 18.12.15 - First Issue

Notes:
1. do not scale from this drawing
2. for information purposes only; exact boundaries as per legal negotiations



MatthewLloydArchitects LLP
1 The Hangar
Perseverance Works
38 Kingsland Road
London E2 8DD
T 020 7613 1934
email: mail@matthewlloyd.co.uk
www.matthewlloyd.co.uk

CONSTRUCTION ©2014



Date:	Scale:	Drawn by:
DEC 15	1:20@A1	
Project: Bourne Estate South for Higgins Construction PLC		
Drawing Site: BLOCK 2 Balcony lighting setting out (sheet 1 of 4)		
Reference:	Dwg. No:	Rev:
BE14	1106	A