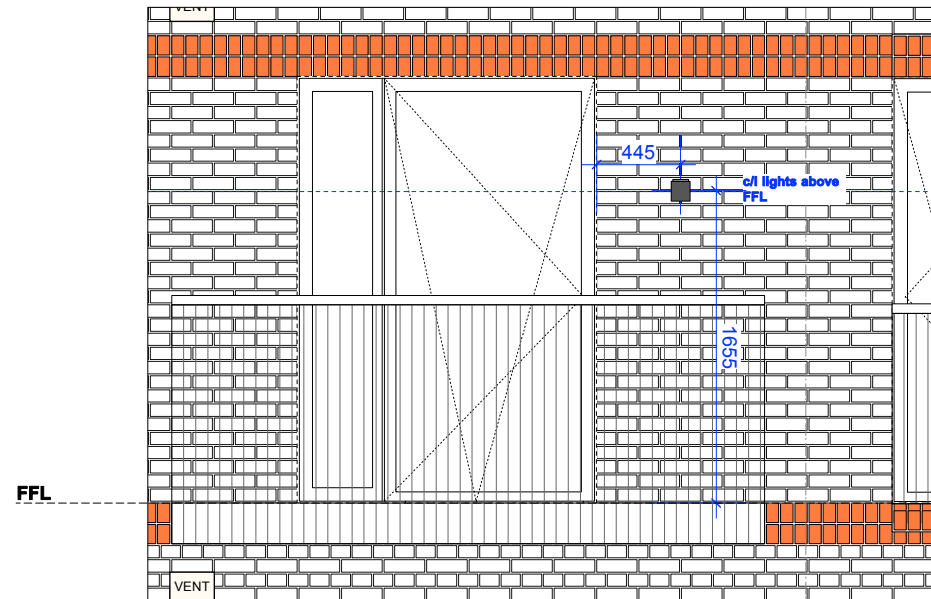
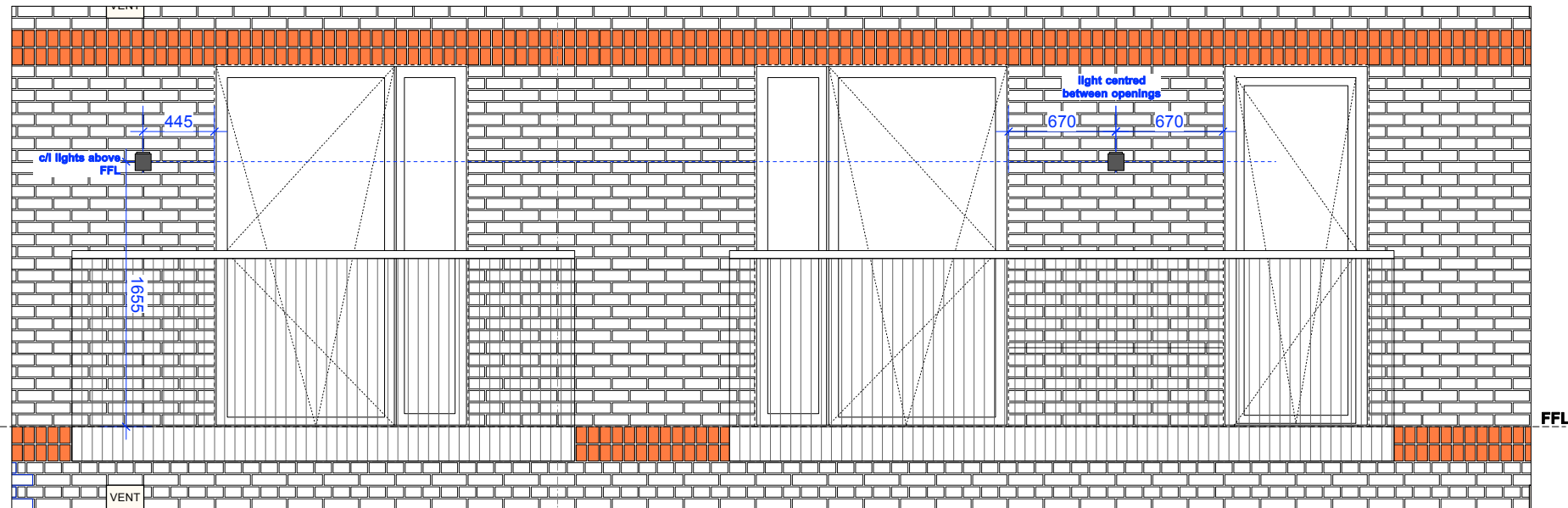


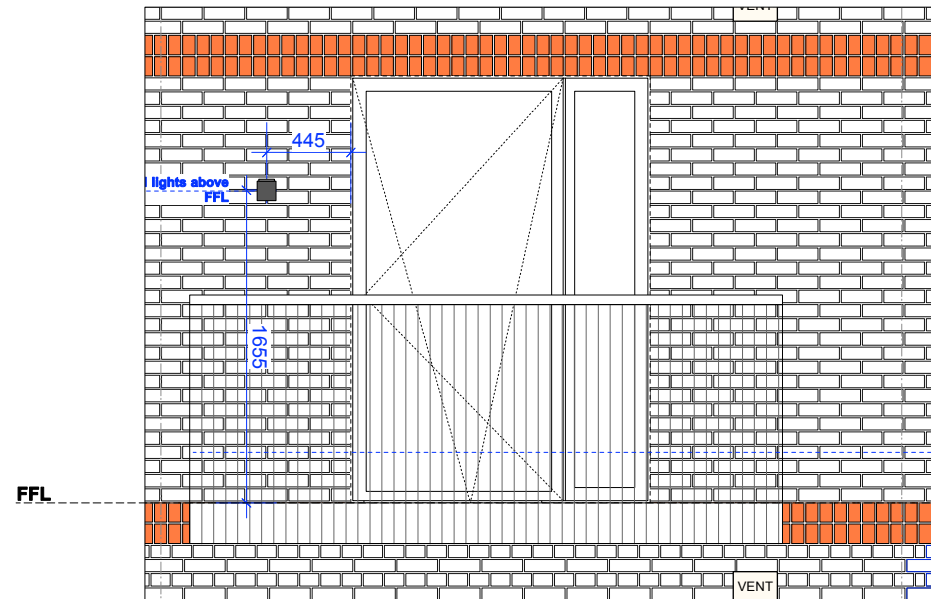
# BLOCK 1 BALCONY LIGHTING SETTING OUT



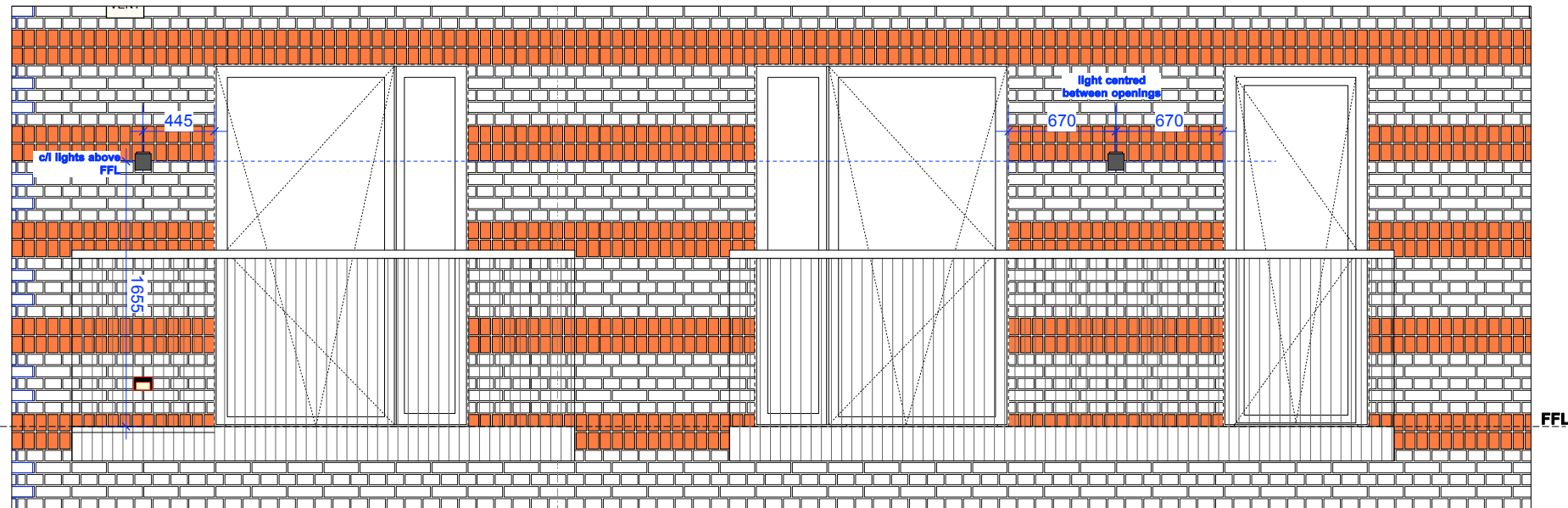
CLOSE UP ELEVATION 01 (2nd, 3rd and 4th floors)  
WEST ELEVATION



CLOSE UP ELEVATION 03 (2nd, 3rd and 4th floors)  
WEST ELEVATION



CLOSE UP ELEVATION 02 (2nd, 3rd and 4th floors)  
WEST ELEVATION



CLOSE UP ELEVATION 04 (first floor only)  
WEST ELEVATION



PRODUCT : KSR ref: 7139 Moby GX53 Low Energy Single Wall Light Die Cast Aluminium body.

COLOUR : Anthracite

To be set out as shown above.



WALL LIGHT  
PRODUCT IMAGE

<p>Notes:</p> <ol style="list-style-type: none"> <li>do not scale from this drawing</li> <li>survey indicative only</li> <li>proposals are subject to utilities surveys</li> <li>drawing to be read in conjunction with relevant consultant's information</li> <li>drawing to be read in conjunction with relevant specifications</li> </ol>		
<p><b>Higgins</b> MatthewLloydArchitects LLP</p> <p>1 The Hangar Perseverance Works 38 Kingsland Road London E2 8QD T 020 7613 1934 email: mail@matthewlloyd.co.uk www.matthewlloyd.co.uk</p>		
<p>Revisions:</p> <p>A 19.04.16 - Light specification and mounting height amended. - 18.12.15 - First Issue</p>		

<p><b>CONSTRUCTION</b> ©2014</p> <p>Original Sheet Size <b>A1</b></p> <p>0 0.5m 1m</p>		
Date:	Scale:	Drawn by:
DEC 15	1:20@A1	
<p>Project: Bourne Estate South for Higgins Construction PLC</p>		
<p>Drawing title: BLOCK 1 Balcony lighting setting out (sheet 2 of 2)</p>		
Reference:	Draw. No.:	Rev.:
BE14	1105	A