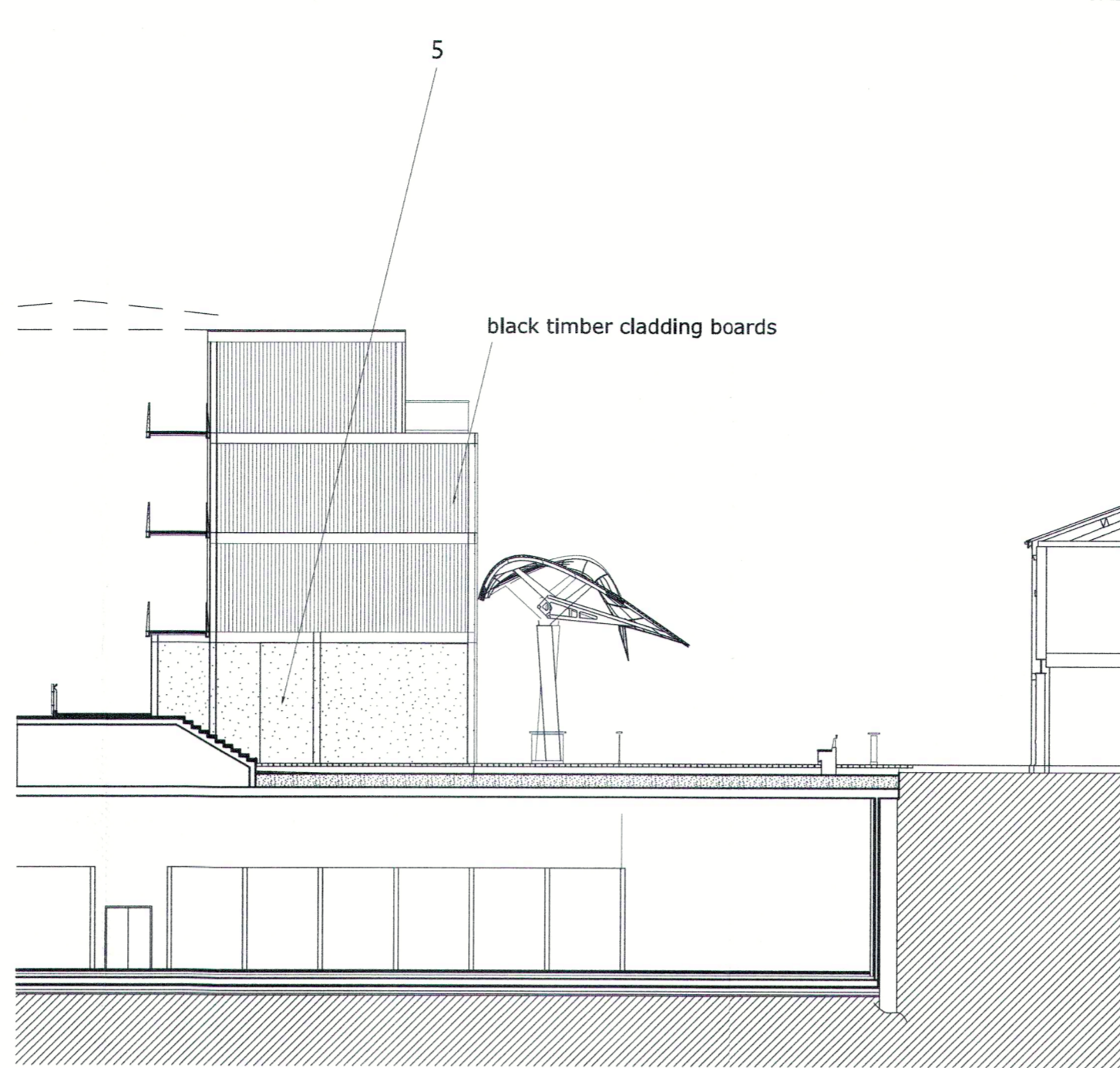
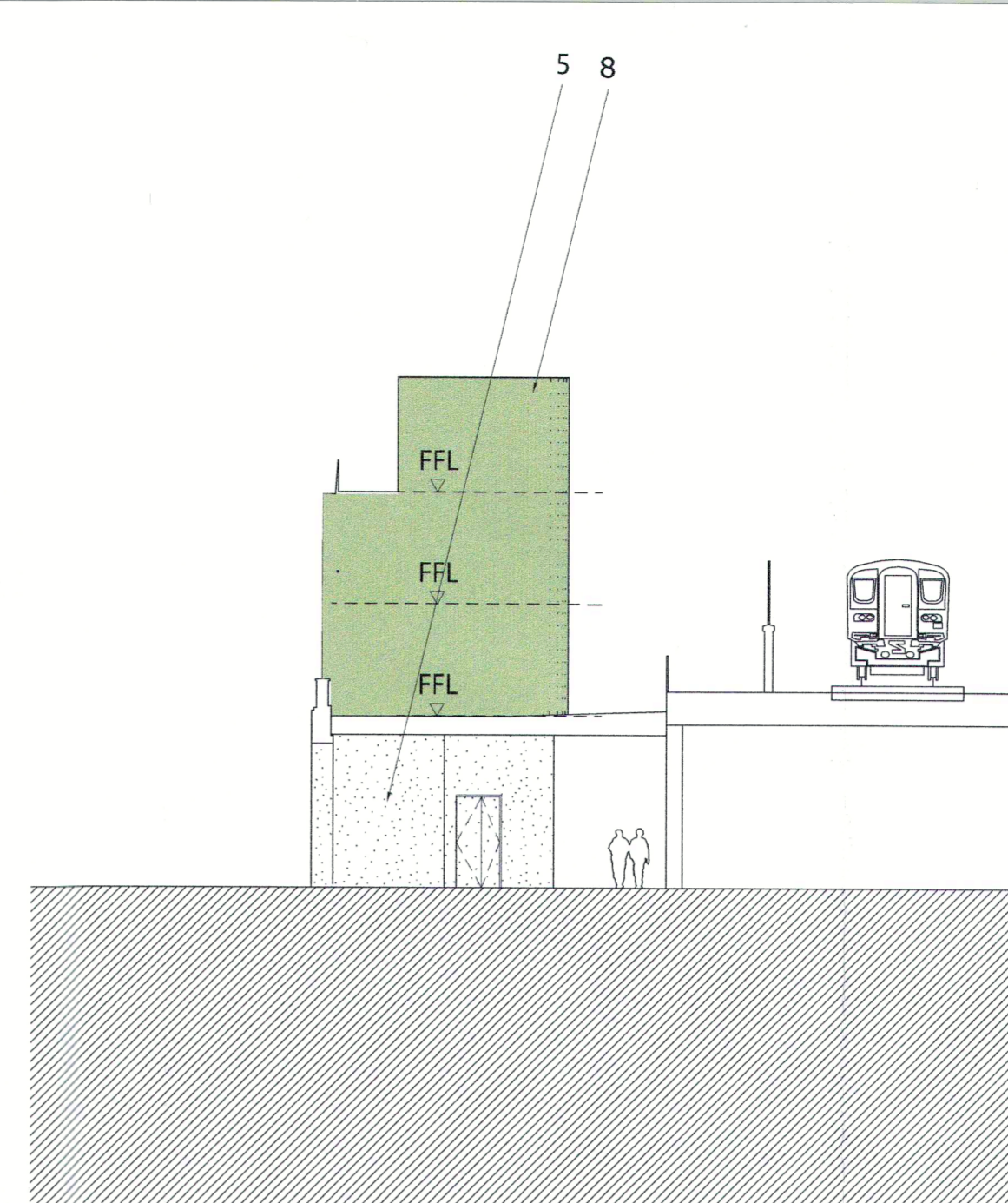


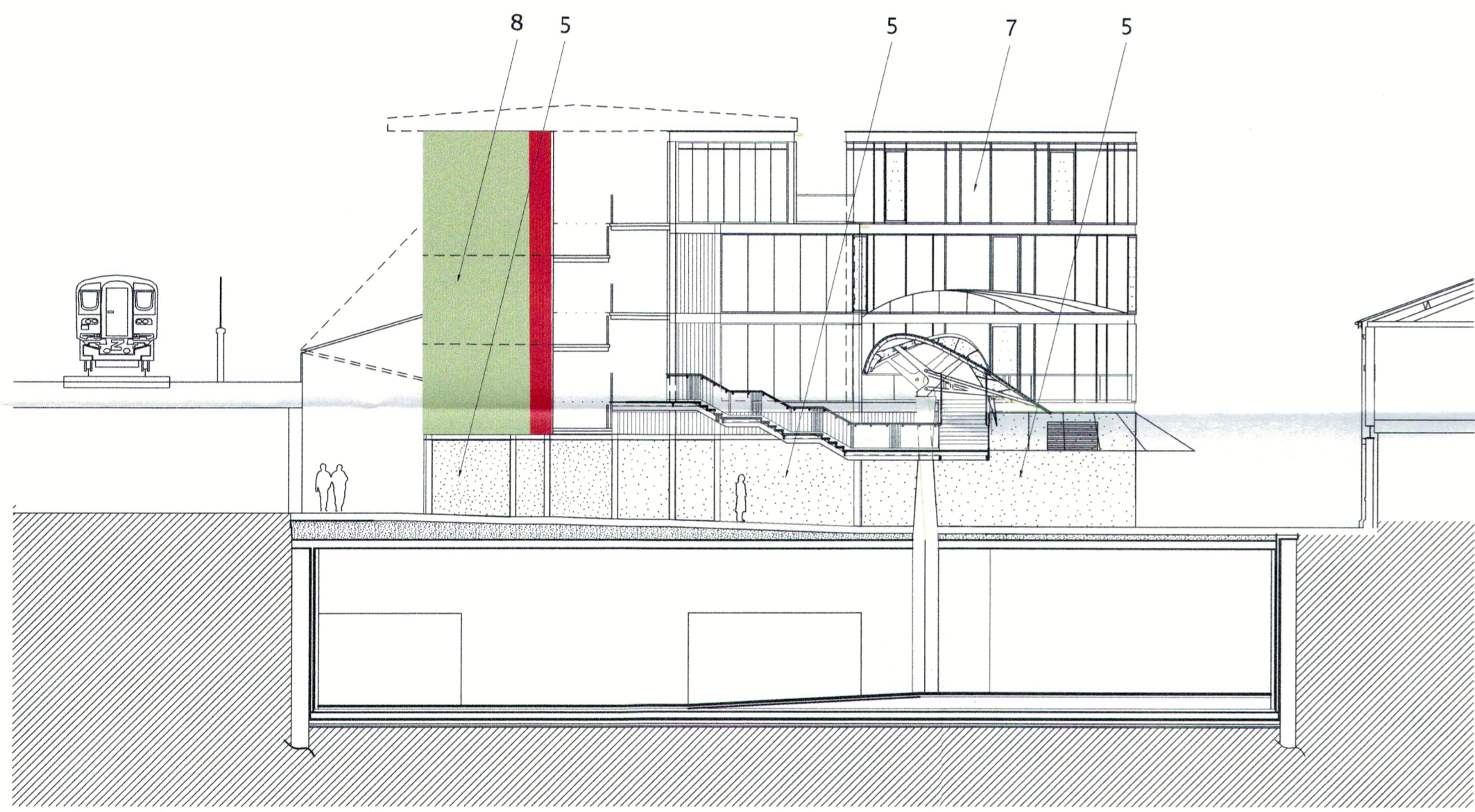
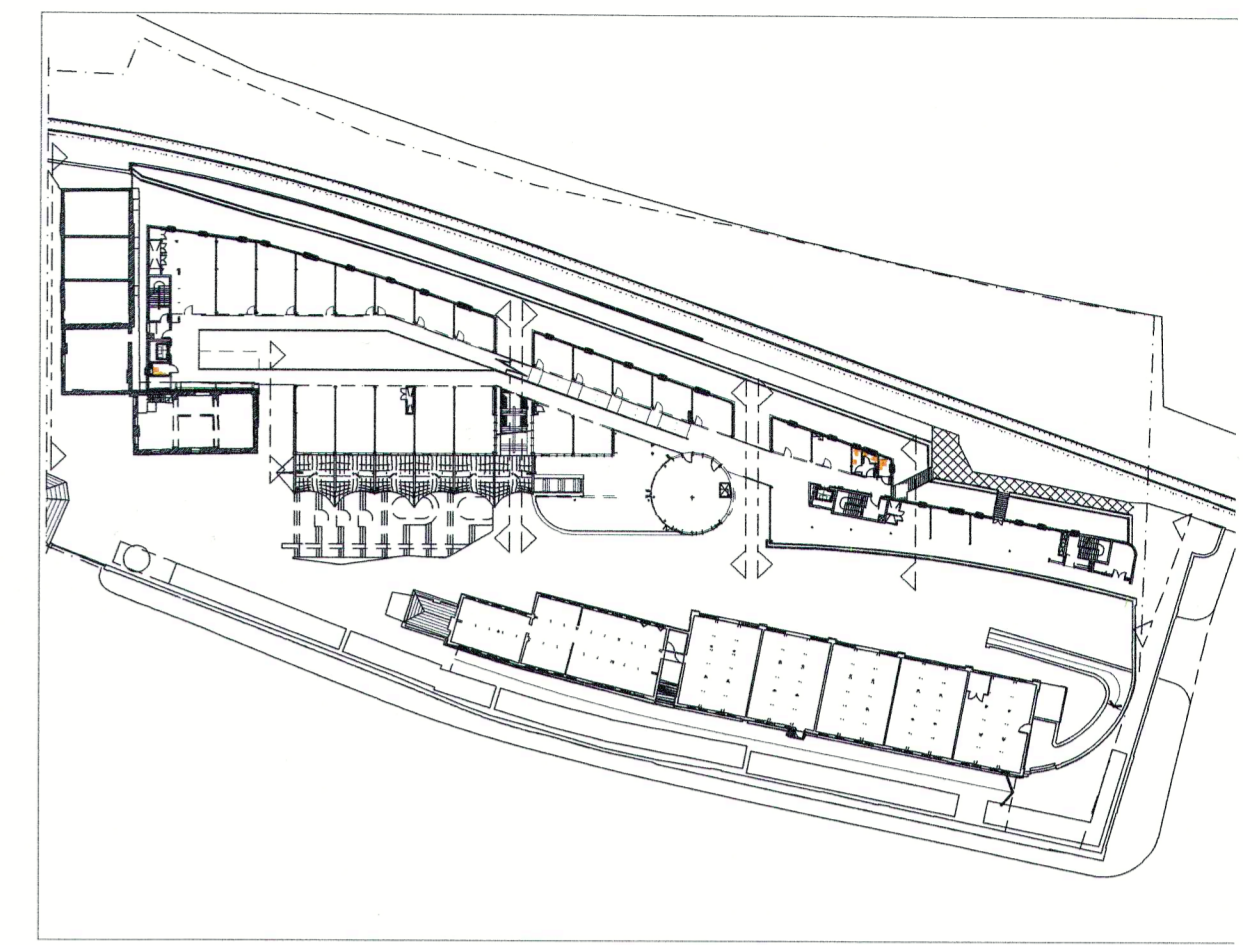
1  
300\_01 EAST ELEVATION (GL1)  
1:200



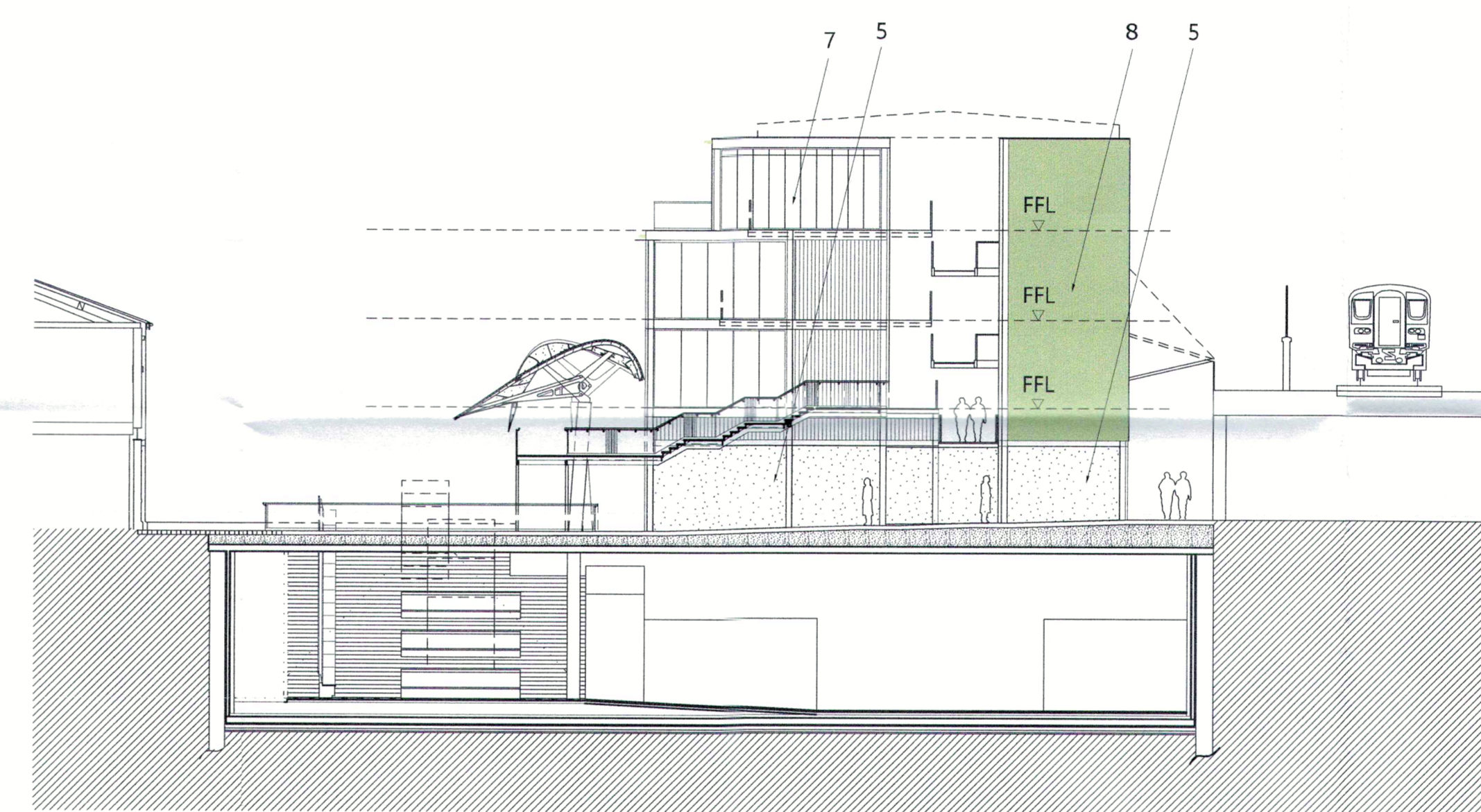
2  
300\_01 EAST ELEVATION (GL4)  
1:200



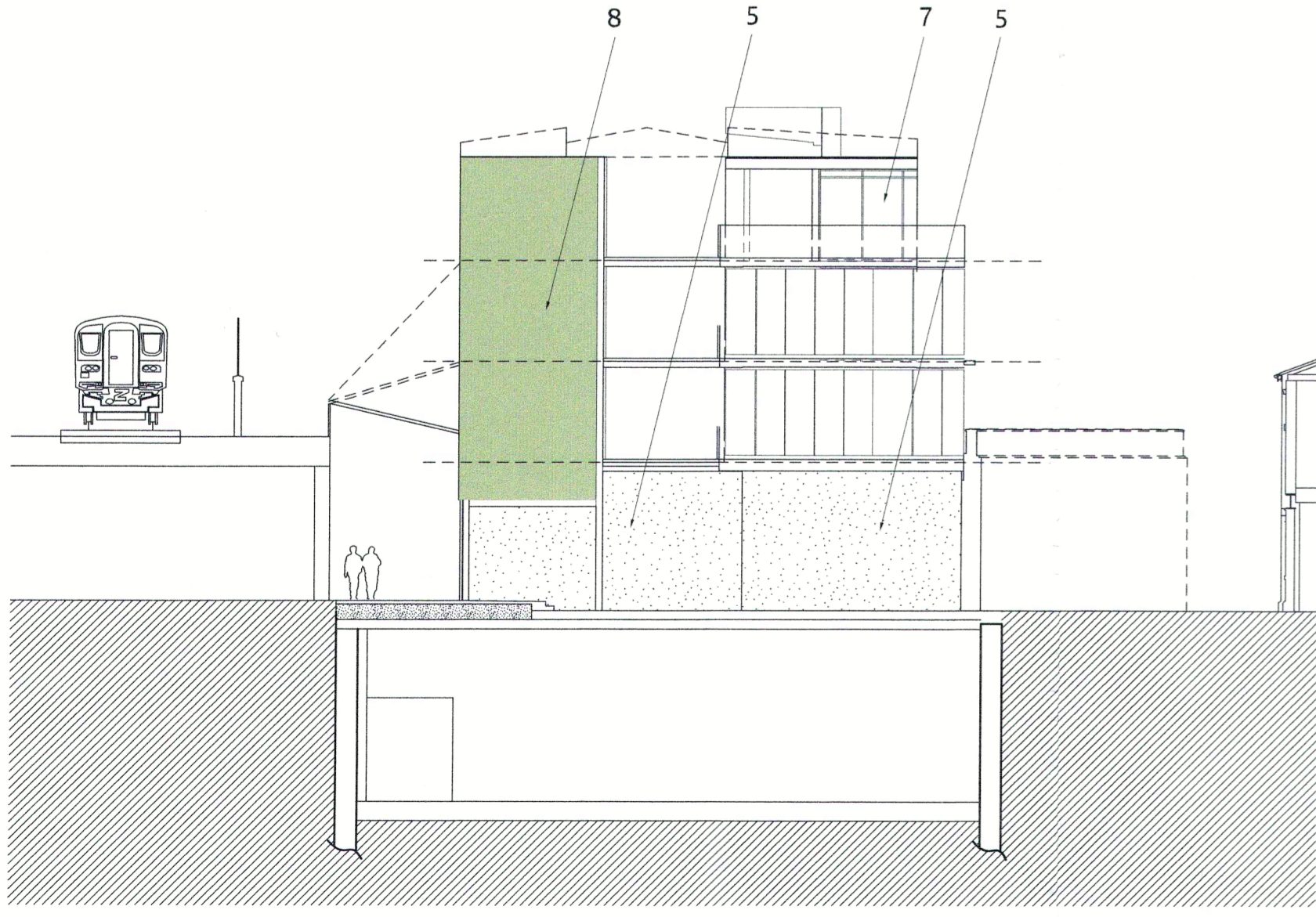
3  
300\_01 WEST ELEVATION (GL25)  
1:200



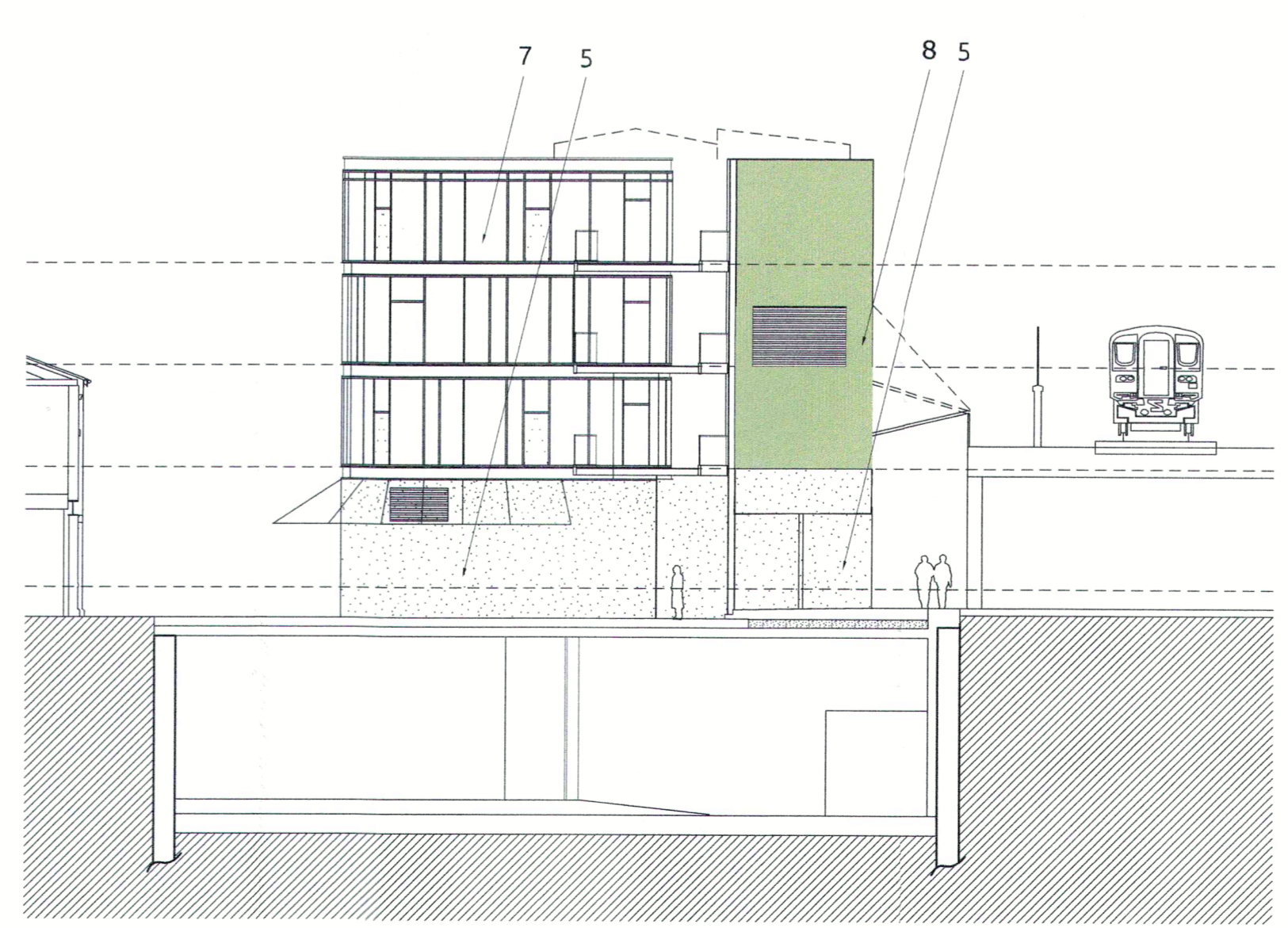
4  
300\_01 EAST ELEVATION (GL9+10)  
1:200



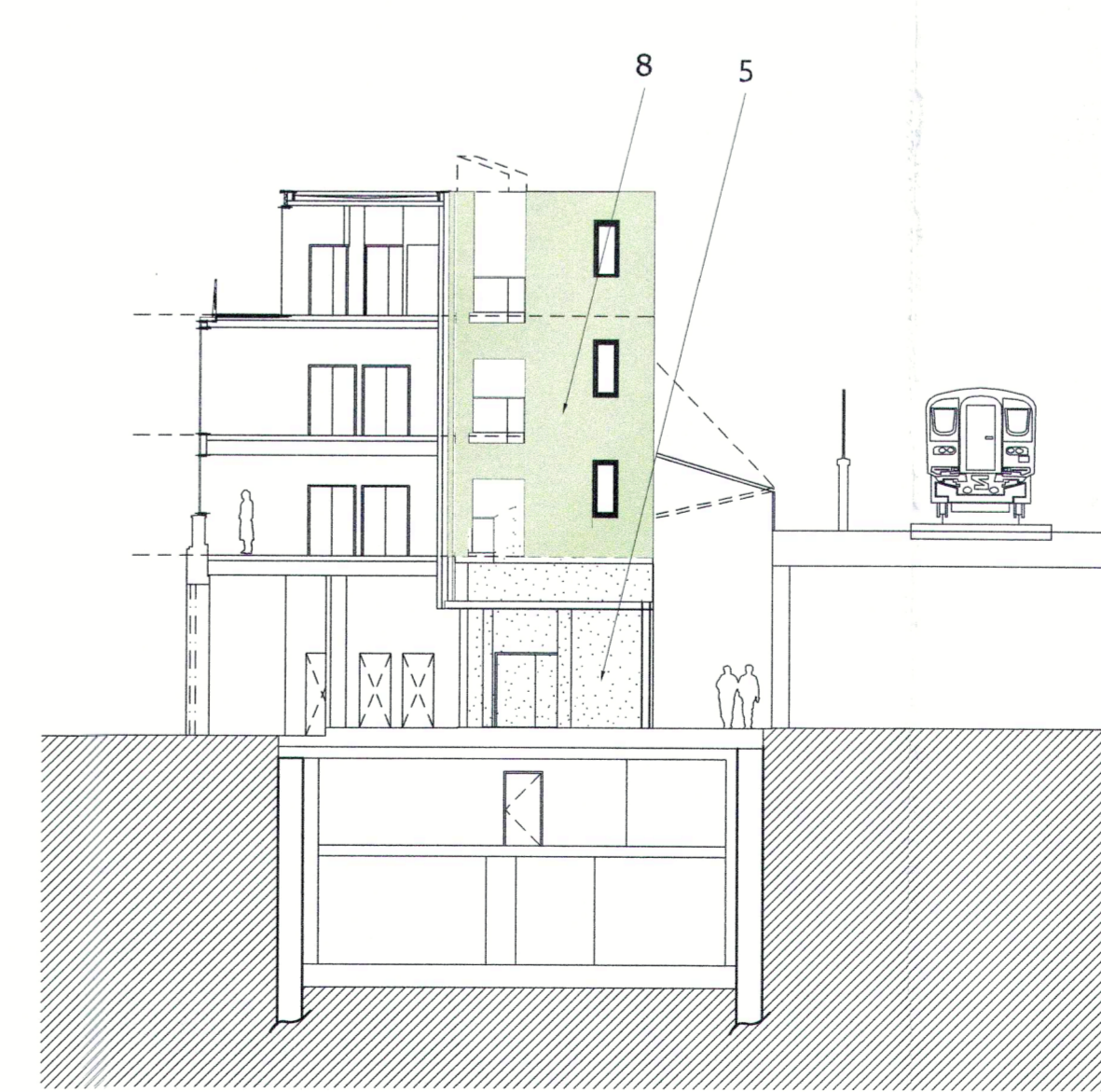
5  
300\_01 WEST ELEVATION (GL9+10)  
1:200



6  
300\_01 EAST ELEVATION (GL15+16)  
1:200



7  
300\_01 WEST ELEVATION (GL15+16)  
1:200



8  
300\_01 WEST ELEVATION (GL19+20)  
1:200

Legend :

- 1. powder coated curtain walling with metal infill
  - 2. Treated Larch timber cladding with 12mm joints horizontally laid over minimum 40mm cavity.
  - 7. Curtain walling system, powder coated
  - 5. Tenant fit out area
- SOUTH ELEVATION
- Aluminium powder coated window Inward opening
  - 6. Aluminium powder coated louvre opening
  - 8. Render system : 'StoTherm' or similar approved. Mechanically fixed' insulation, T-rails, reinforcing coat with reinforcing mesh and top coat.
- Colours
- 33340
  - 31137
  - 31134
  - 31131

Client	Stanley Sidings Ltd		
Project	Camden Stables A&B site		
Title	East & West Elevation		
	Lawful development application		
	Reflecting the as-built condition in 2010		
project	drg no.	Rev	
05005	300_01	PL1	
date	scale		
25.05.2016	1:200 @ A1		