

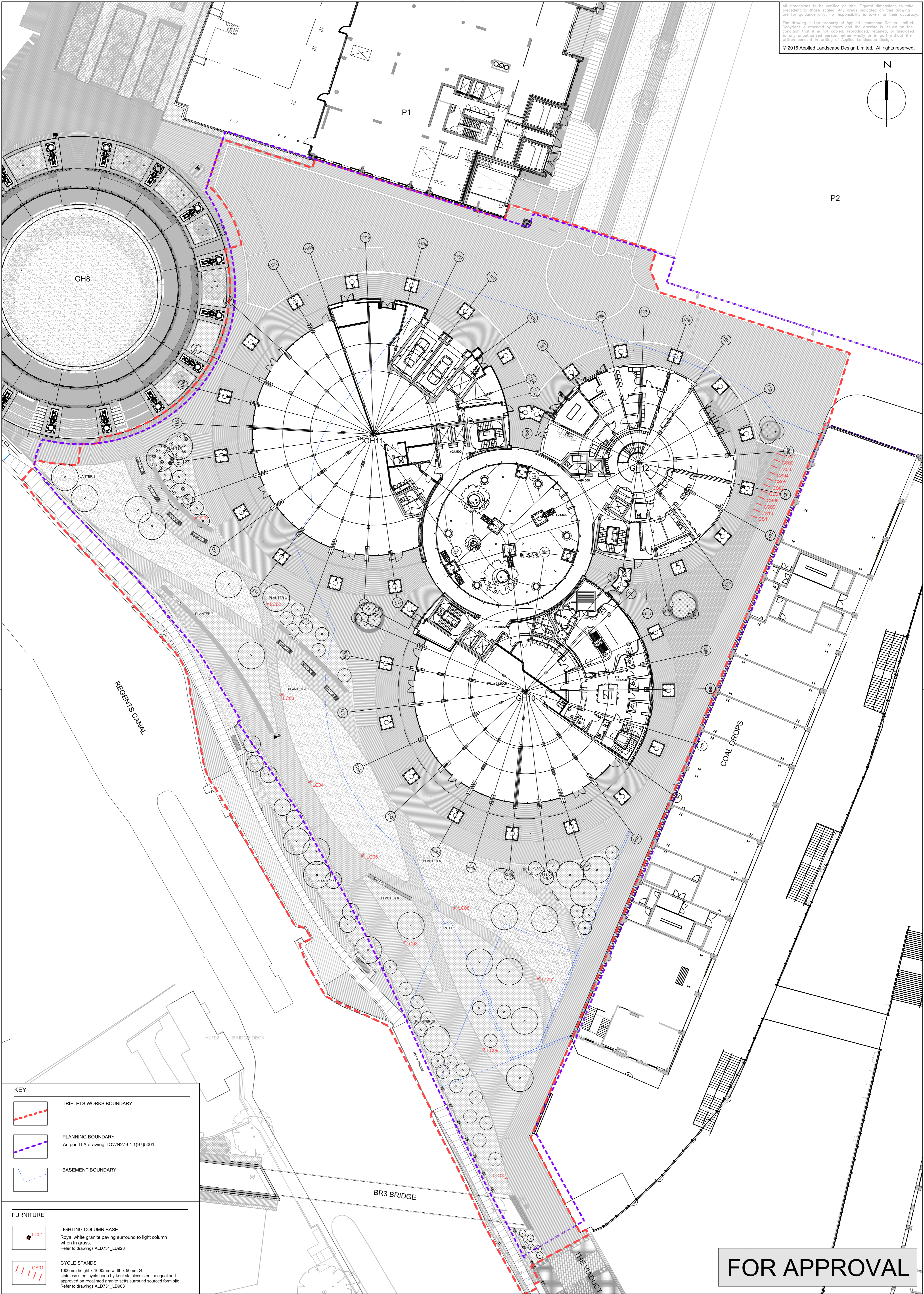
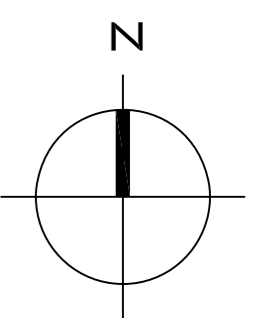
## **Appendix 2**

### **ALD731P -GA1003 Rev R01 Cycle Stands and Simes Column Locations**

All dimensions to be verified on site. Figured dimensions to take precedent to those scaled. Any areas indicated on this drawing are for guidance only, no responsibility is taken for their accuracy.

The drawing is the property of Applied Landscape Design Limited. Copyright is reserved by them and the drawing is issued on the condition that it is not copied, reproduced, retained, or disclosed to any unauthorised person, either wholly or in part without the written consent in writing of Applied Landscape Design.

© 2016 Applied Landscape Design Limited. All rights reserved.



**FOR APPROVAL**

**KEY**

- TRIPLETS WORKS BOUNDARY
- PLANNING BOUNDARY  
As per TLA drawing TOWN279.4.(197)5001
- BASEMENT BOUNDARY

**FURNITURE**

- LC01** LIGHTING COLUMN BASE  
Royal white granite paving surround to light column when in grass.  
Refer to drawings ALD731\_LD923
- CS01** CYCLE STANDS  
1000mm height x 1000mm width x 50mm Ø stainless steel cycle hoop by kent stainless steel or equal and approved on recycled granite setts surround sourced form site  
Refer to drawings ALD731\_LD903

LANDSCAPE ARCHITECT:

The Threshing Barn  
Bignell Park Barns  
Chesterton  
Oxfordshire  
OX26 1TD

Tel: 01869 248776  
Fax: 01869 327513  
Email: mail@appliedlandscape.co.uk

Rev	Update	Date
R01	Issued For Planning	08.06.16

PROJECT:  
**GAS HOLDER TRIPLETS KXC**

CLIENT:  
 carillion

drawn: CW	checked: KmJ
scale: 1:250 @ A1	date: 08.06.2016
status: Information	xref file ref: ALD731_MPbasePlanning

DRAWING TITLE: <b>TRIPLETS PARK</b>		
CYCLE STANDS AND SIMES COLUMN LOCATION		
PROJECT NO. ALD731P	DRAWING NUMBER: GA1003	REVISION: R01