

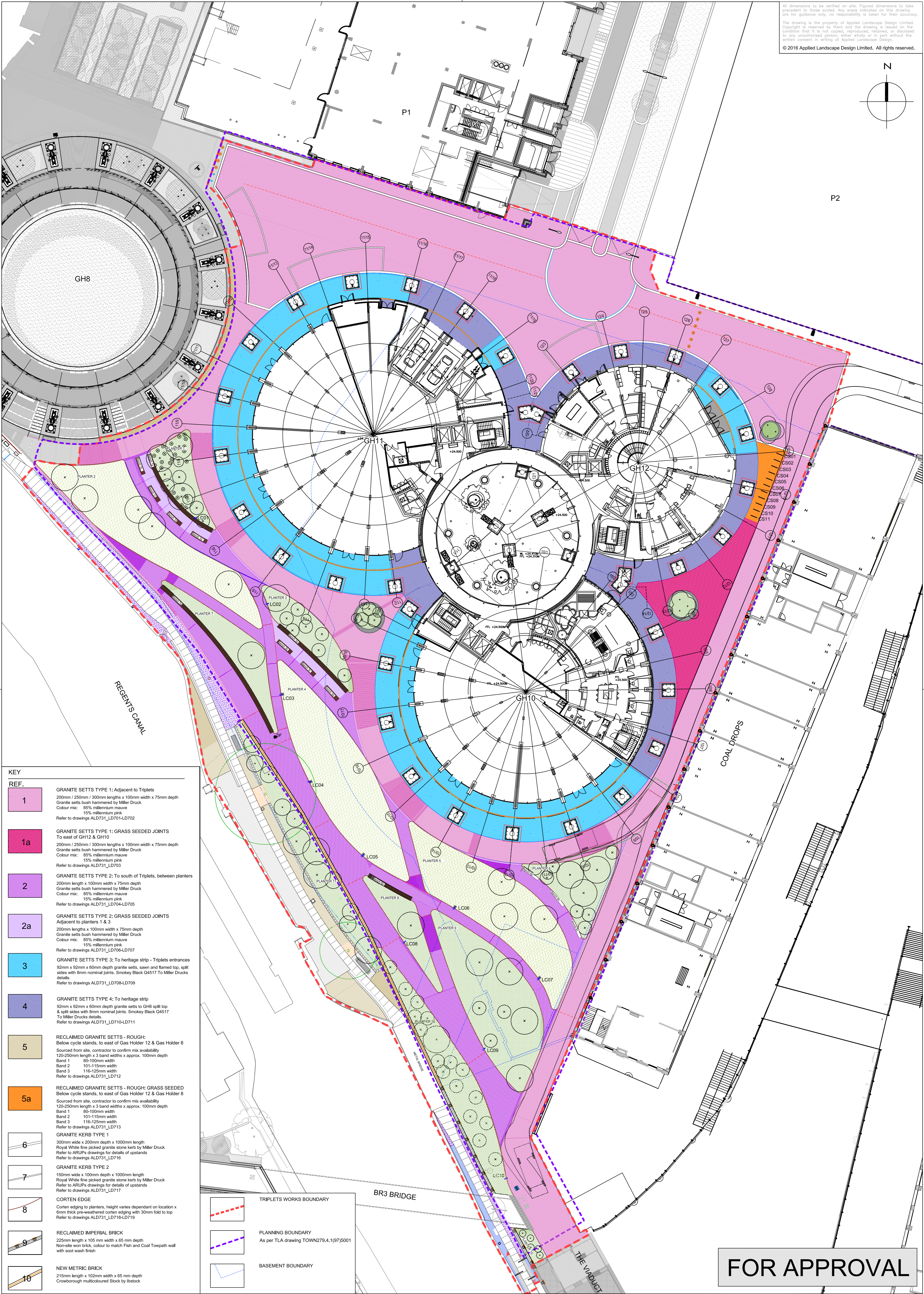
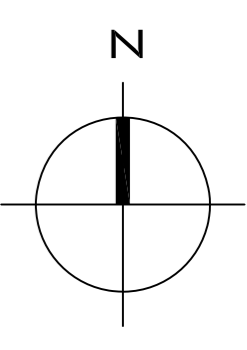
Appendix 1

ALD731P -GA1002 Rev R01 Gasholder Gardens General Arrangement

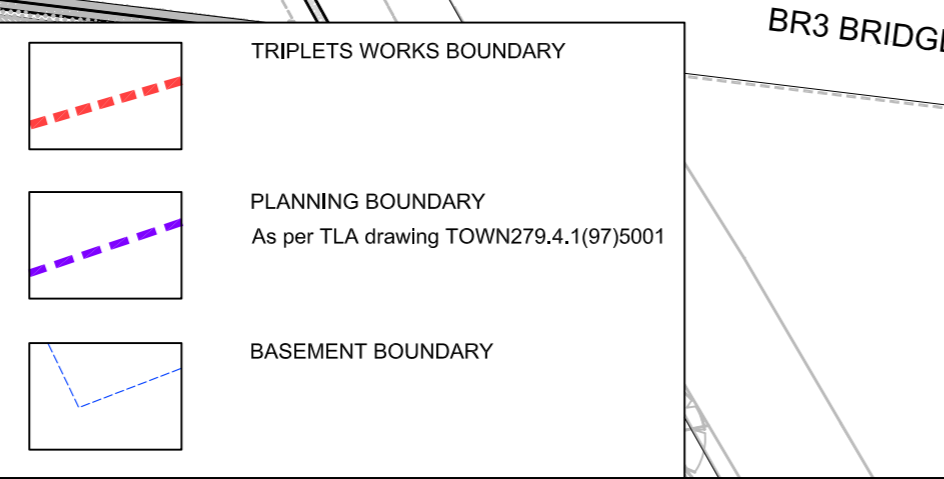
All dimensions to be verified on site. Figured dimensions to take precedent to those scaled. Any areas indicated on this drawing are for guidance only, no responsibility is taken for their accuracy.

The drawing is the property of Applied Landscape Design Limited. Copyright is reserved by them and the drawing is issued on the condition that it is not copied, reproduced, retained, or disclosed to any unauthorised person, either wholly or in part without the written consent in writing of Applied Landscape Design.

© 2016 Applied Landscape Design Limited. All rights reserved.



| KEY REF. | DESCRIPTION |
|----------|---|
| 1 | GRANITE SETTS TYPE 1: Adjacent to Triplets 200mm / 250mm / 300mm lengths x 100mm width x 75mm depth Granite setts bush hammered by Miller Druck Colour mix: 85% millennium mauve 15% millennium pink Refer to drawings ALD731_LD701-LD702 |
| 1a | GRANITE SETTS TYPE 1: GRASS SEEDED JOINTS To east of GH12 & GH10 200mm / 250mm / 300mm lengths x 100mm width x 75mm depth Granite setts bush hammered by Miller Druck Colour mix: 85% millennium mauve 15% millennium pink Refer to drawings ALD731_LD703 |
| 2 | GRANITE SETTS TYPE 2: To south of Triplets, between planters 200mm length x 100mm width x 75mm depth Granite setts bush hammered by Miller Druck Colour mix: 85% millennium mauve 15% millennium pink Refer to drawings ALD731_LD704-LD705 |
| 2a | GRANITE SETTS TYPE 2: GRASS SEEDED JOINTS Adjacent to planters 1 & 3 200mm lengths x 100mm width x 75mm depth Granite setts bush hammered by Miller Druck Colour mix: 85% millennium mauve 15% millennium pink Refer to drawings ALD731_LD706-LD707 |
| 3 | GRANITE SETTS TYPE 3: To heritage strip - Triplets entrances 92mm x 92mm x 60mm depth granite setts, sawn and flamed top, split sides with 8mm nominal joints. Smokey Black Q4517 To Miller Drucks details. Refer to drawings ALD731_LD708-LD709 |
| 4 | GRANITE SETTS TYPE 4: To heritage strip 92mm x 92mm x 60mm depth granite setts to GH8 split top & split sides with 8mm nominal joints. Smokey Black Q4517 To Miller Drucks details. Refer to drawings ALD731_LD710-LD711 |
| 5 | RECLAIMED GRANITE SETTS - ROUGH: Below cycle stands, to east of Gas Holder 12 & Gas Holder 8 Sourced from site, contractor to confirm mix availability 120-250mm length x 3 band widths x approx. 100mm depth Band 1 80-100mm width Band 2 101-115mm width Band 3 116-125mm width Refer to drawings ALD731_LD712 |
| 5a | RECLAIMED GRANITE SETTS - ROUGH: GRASS SEEDED Below cycle stands, to east of Gas Holder 12 & Gas Holder 8 Sourced from site, contractor to confirm mix availability 120-250mm length x 3 band widths x approx. 100mm depth Band 1 80-100mm width Band 2 101-115mm width Band 3 116-125mm width Refer to drawings ALD731_LD713 |
| 6 | GRANITE KERB TYPE 1 300mm wide x 200mm depth x 1000mm length Royal White fine picked granite stone kerb by Miller Druck Refer to ARUPs drawings for details of upstands Refer to drawings ALD731_LD716 |
| 7 | GRANITE KERB TYPE 2 150mm wide x 100mm depth x 1000mm length Royal White fine picked granite stone kerb by Miller Druck Refer to ARUPs drawings for details of upstands Refer to drawings ALD731_LD717 |
| 8 | CORTEN EDGE Corten edging to planters, height varies dependant on location x 60mm thick pine-weathered corten edging with 30mm fold to top Refer to drawings ALD731_LD718-LD719 |
| 9 | RECLAIMED IMPERIAL BRICK 225mm length x 105 mm width x 65 mm depth Non-site won brick, colour to match Fish and Coal Towpath wall with soot wash finish |
| 10 | NEW METRIC BRICK 215mm length x 102mm width x 65 mm depth Crowborough multicoloured Stock by Istock |



FOR APPROVAL

LANDSCAPE ARCHITECT:

The Threshing Barn
Bignell Park Barns
Chersterton
Oxfordshire
OX26 1TD

applied landscape design
Tel: 01869 248776
Fax: 01869 327513
Email: mail@appliedlandscape.co.uk

| Rev. | Update | Date |
|------|---------------------|----------|
| R01 | Issued For Planning | 08.06.16 |

PROJECT: **GAS HOLDER TRIPLETS KXC**

CLIENT: carillion

drawn: CW
scale: 1:250 @ A1
status: Information

checked: KmJ
date: 08.06.2016
xref file ref: ALD731_MPbasePlanning

| DRAWING TITLE: | PROJECT NO. | DRAWING NUMBER: | REVISION: |
|--------------------------------------|-------------|-----------------|-----------|
| TRIPLETS PARK GENERAL ARRANGEMENT | ALD731P | GA1002 | R01 |