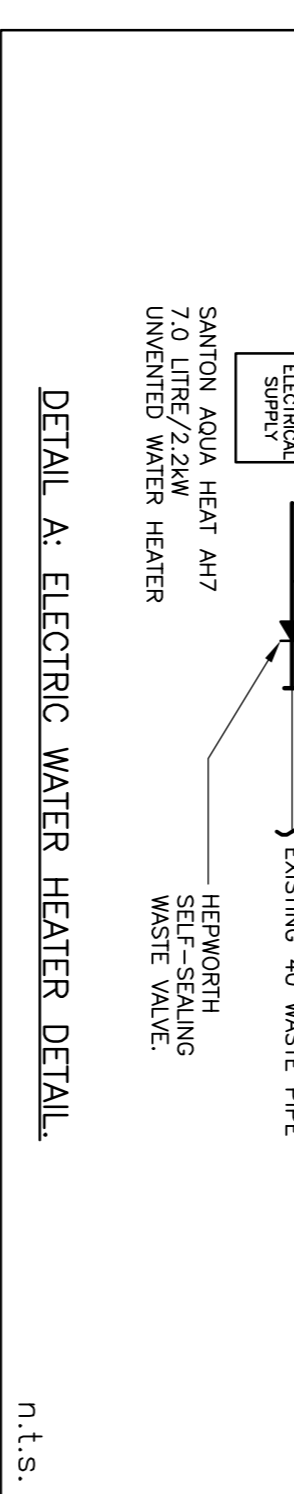
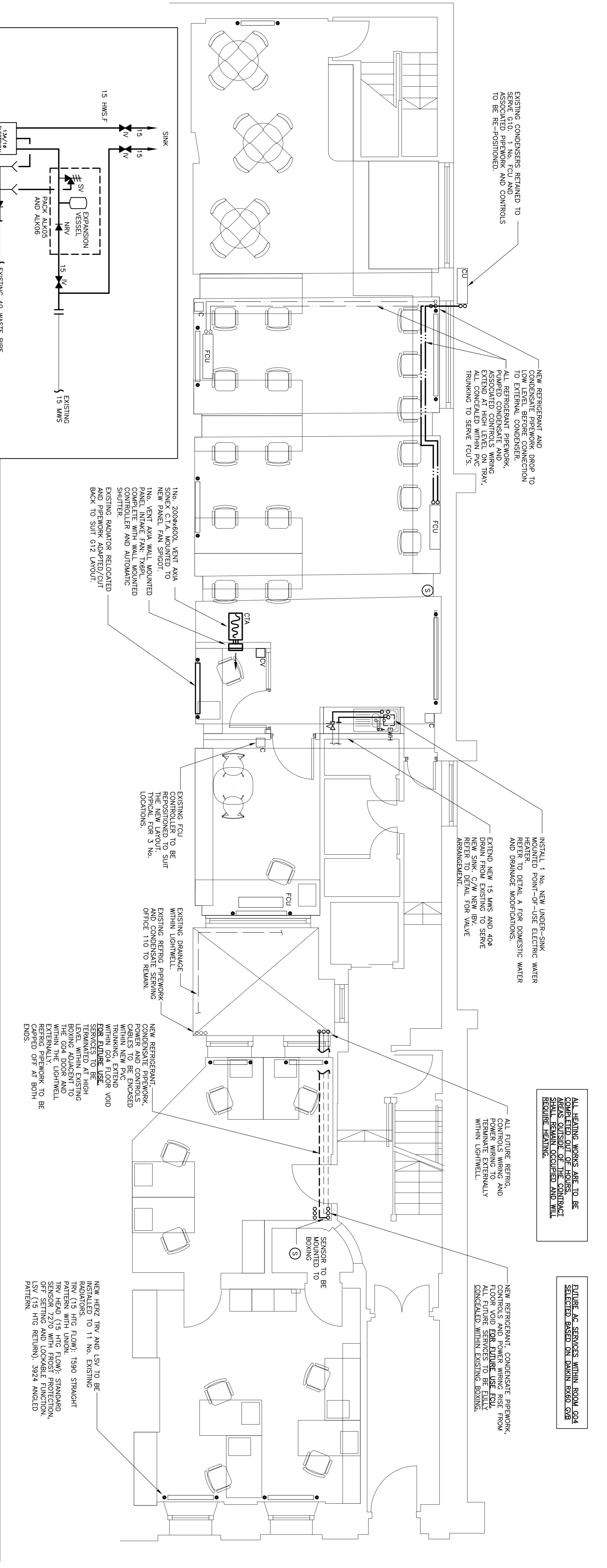
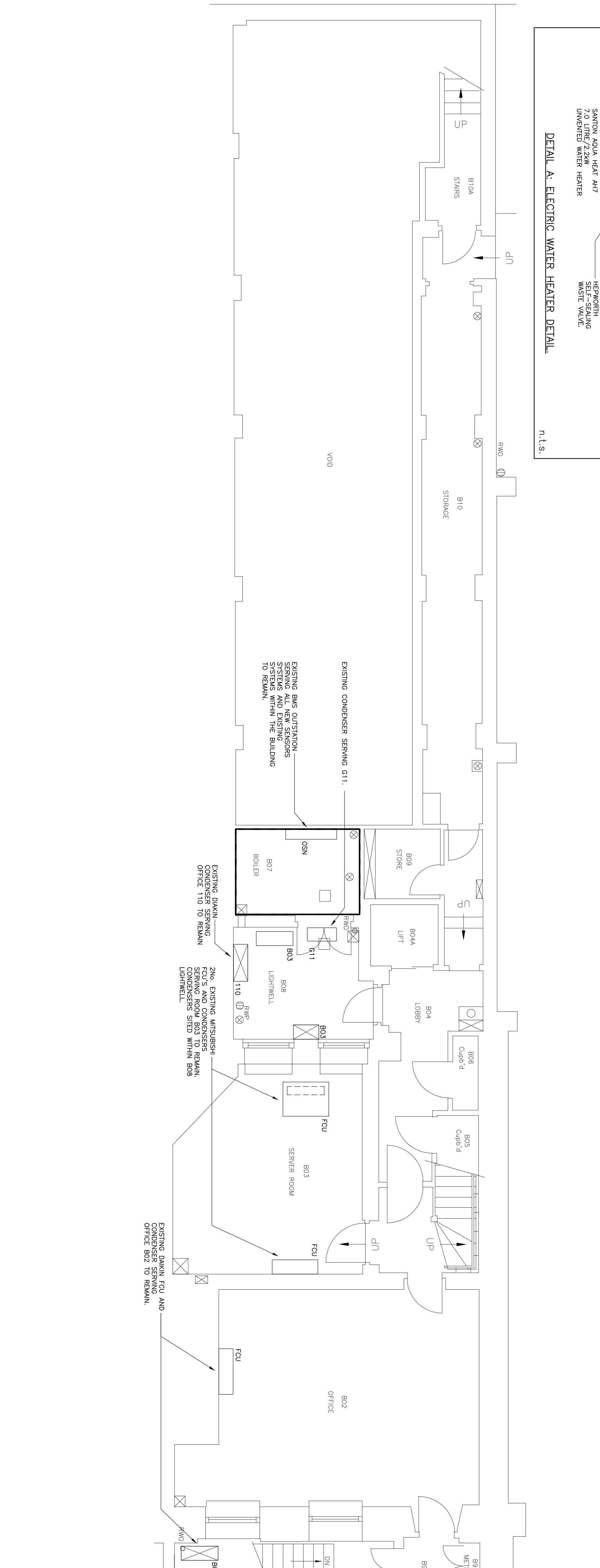


GROUND FLOOR



BASEMENT



- Notes:
- THIS DRAWING INDICATES ENGINEERING SERVICES INSTALLED AND TO BE INSTALLED. SERVICES NOT ACCURATELY REPRESENTING ANY OTHER DETAIL.
  - THIS DRAWING SHOWS THE DESIGN INTENT AND MUST NOT BE USED FOR INSTALLATION PURPOSES.
  - SIMPLE USER GUIDE AND END-USER TRAINING TO INCLUDE THE METHOD OF CHANGING THE MASTER CONTROLLER ON THE DRAIN MAIN VAV SYSTEMS.
  - ALL FCU'S ARE TO BE INSTALLED COMPLETE WITH MIN-LINE CONDENSATE PUMPS COMPATIBLE FOR INSTALLATION WITHIN THE NEW TRUNKING.

- Legend:
- EXISTING SERVICES TO REMAIN
  - NEW PIPework AT LOW LEVEL
  - NEW PIPework AT HIGH LEVEL
  - NEW PIPework WITHIN FLOOR VOID
  - NEW REFRIGERANT AND CONDENSATE PIPework (SUPPORTED ON NEW TRAY AND CONCEALED WITHIN ACCESSIBLE PVC-C TRUNKING)
  - WALL MOUNTED BUS TEMPERATURE SENSOR
  - WALL MOUNTED FCU CONTROLLER
  - WALL MOUNTED VENTILATION CONTROLLER
  - PAN SOL UNIT
  - DRINKING WATER UNIT
  - MINI VAV SYSTEM
  - CROSS TALK ATTENUATOR
  - CONDENSER UNIT
  - MAINS WATER SERVICE

Revisions:

Ref.	Date	Description	By	App
T1	28-09-15	TENDER ISSUE	SH	IR

Location Plan:

Client: UNIVERSITY COLLEGE LONDON  
 Esquires Street  
 Gower Street  
 London  
 WC1E 6BT

Project: INSTITUTE OF NEUROLOGY  
 GROUND, FIRST AND FIFTH FLOOR  
 REFURBISHMENT

Title: EXISTING BASEMENT AND PROPOSED GROUND FLOOR PLANS MECHANICAL SERVICES LAYOUT

Date: 06-07-15  
 Paper Size: A1  
 Scale: 1:50

Designed by: SH  
 Approved by: IR  
 Drawn by: DV

Dwg Ref: 1452-MS-201 T1

CHAATFIELD BUILDING  
**FOWLER MARTIN**  
 SERVICES ENGINEERS

13 Gange Court, The Leazes  
 Newcastle upon Tyne, NE4 6BE  
 T 01273 355 836  
 F 01273 355 838  
 E mail@fowlermartin.com  
 W www.fowlermartin.com

THE BRITISH ASSOCIATION OF ENGINEERING CONTRACTORS  
 ISO 9001  
 THE BRITISH ASSOCIATION OF ENGINEERING CONTRACTORS  
 ISO 14001