

Landscape Plan

Legend:

- 1 The Driveway
- 2 The Forecourt
- 3 The Terrace
- 4 The Main Garden
- 5 The Parterre Garden
- 6 The Pavilion Garden
- 7 The Lily Pond
- 8 The Fruit Garden
- 9 The Woodland Walk
- 10 The Restored Pond



The Driveway



Image 1: The Driveway. Author: JFA Landscaping

The Driveway: (words by JFA Environmental Planning)

The entrance to the site will comprise of a feature gate and a sweeping driveway. The driveway will be reminiscent of grand houses.

This will comprise a feature gate and be lined with an avenue of sweet gum trees (*Liquidamber styraciflua*) which are a medium sized tree with rich green summer foliage turning brilliant orange and yellow in the autumn. Swathes of native woodland bulbs and wildflowers will be planted in lawns either side of the drive as one enters. The overall effect will complement the parkland character of the renewed site. The driveway, surfaced in natural stone, will lead into a similarly paved, circular forecourt. Surface water run-off from the drive and forecourt will drain into the surrounding lawn, thus forming part of the approach for a sustainable urban drainage system. (SUDS)

The Forecourt

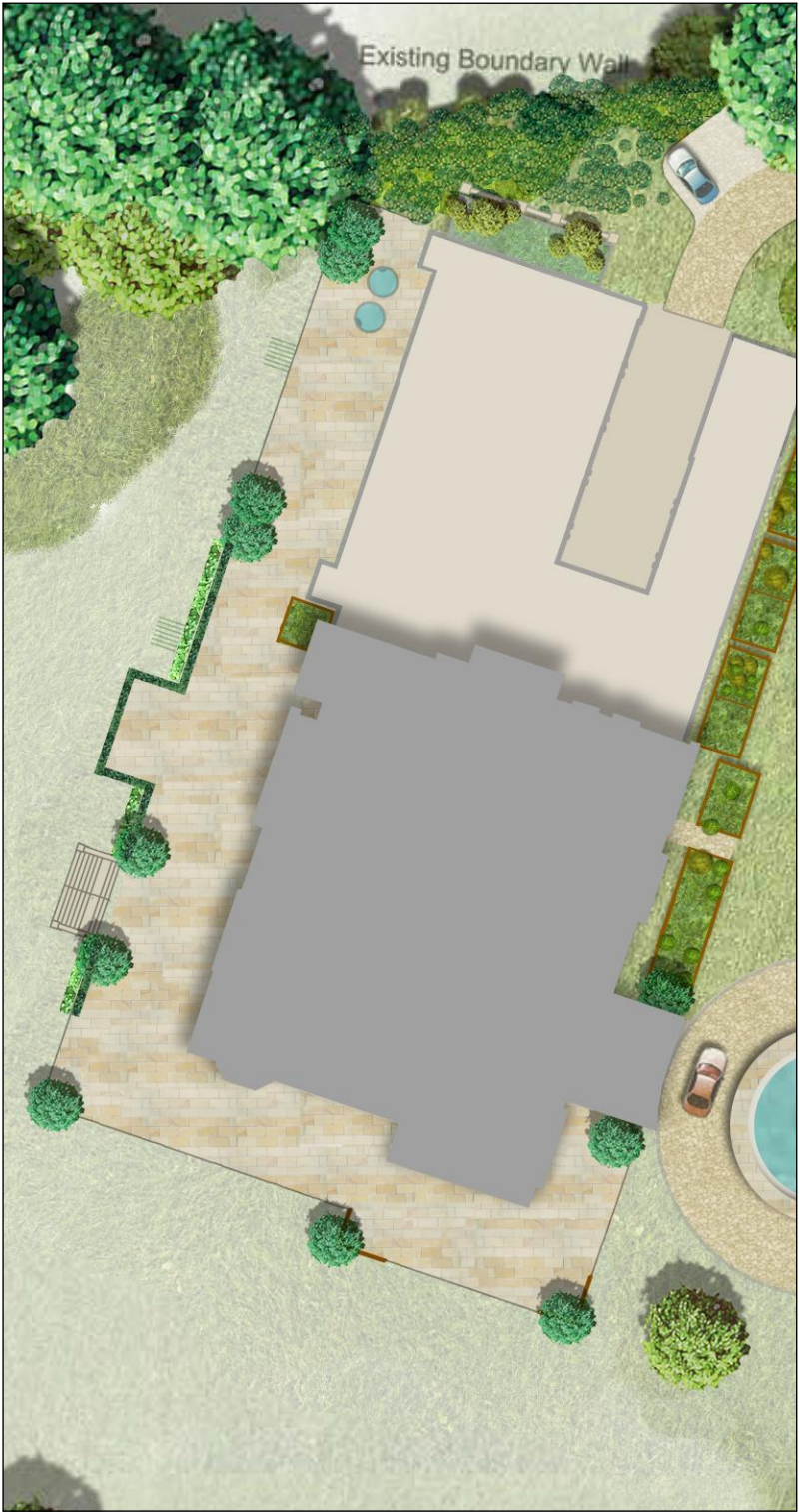


Image 1: The Infinity Fountain. Author: JFA Landscaping

The Forecourt:
(words by JFA Environmental Planning)

The circular forecourt is proposed at the main entrance to the house. This will serve as a drop off as well as provide a focal point which will give prominence to the tower feature of the house. At the centre of the forecourt will be a graceful stone circular fountain containing a sculptural feature. The eastern edge of the forecourt will be loosely defined by an intermittent formal hedge and fastigate trees which will provide a backdrop to the water feature when viewed from the main entrance.

The Terrace



The Terrace:
(words by JFA Environmental Planning)

This is simple in design and forms an extension to the living space which has commanding views over the surrounding gardens. The periphery is defined by low box hedging and topiary trees as well as an herbaceous border on the eastern edge. Grassed steps lead from the pool terrace to the main garden.

Image 1: The Terrace. Author: JFA Landscaping