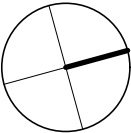
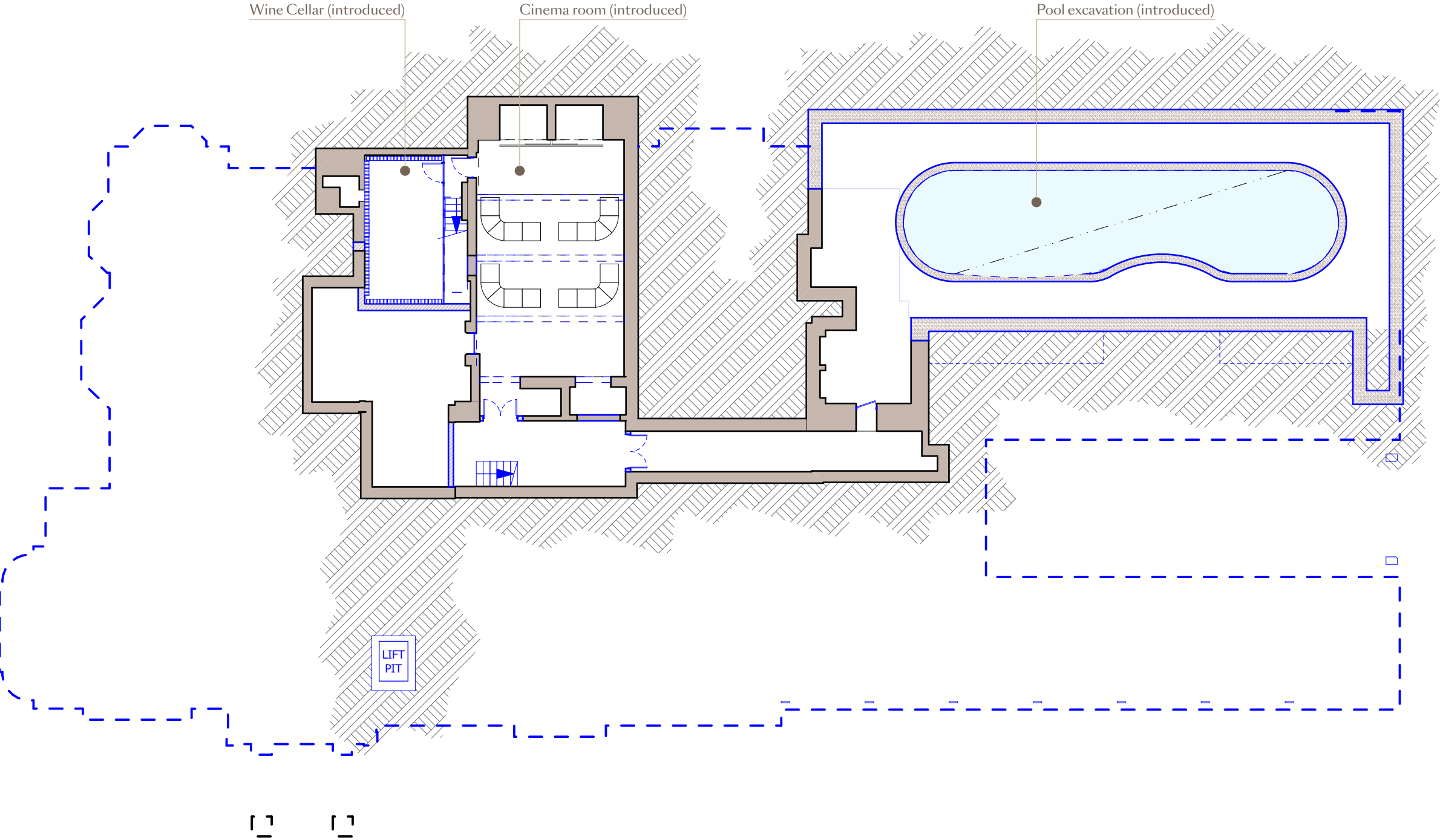


The Tower and Roof Plan:

The second floor of the tower is naturally given over to an observatory to take full advantage of the magnificent views of the Heath and Greater London. The passenger life accesses not only the observatory but the roof terrace above, contained fully in the restored turret.





Basement Plan:

The basement will be converted into a combination of habitable and service accommodation. No extensions to the basement will occur as part of this application apart from the excavation necessary for the pool at its services.

The existing vaults will be converted into a cinema room and a wine cellar will be accessed via a stair from the cigar room above. The main access will occur via a stair located in the Cloister Atrium above.

