

The Walled Garden

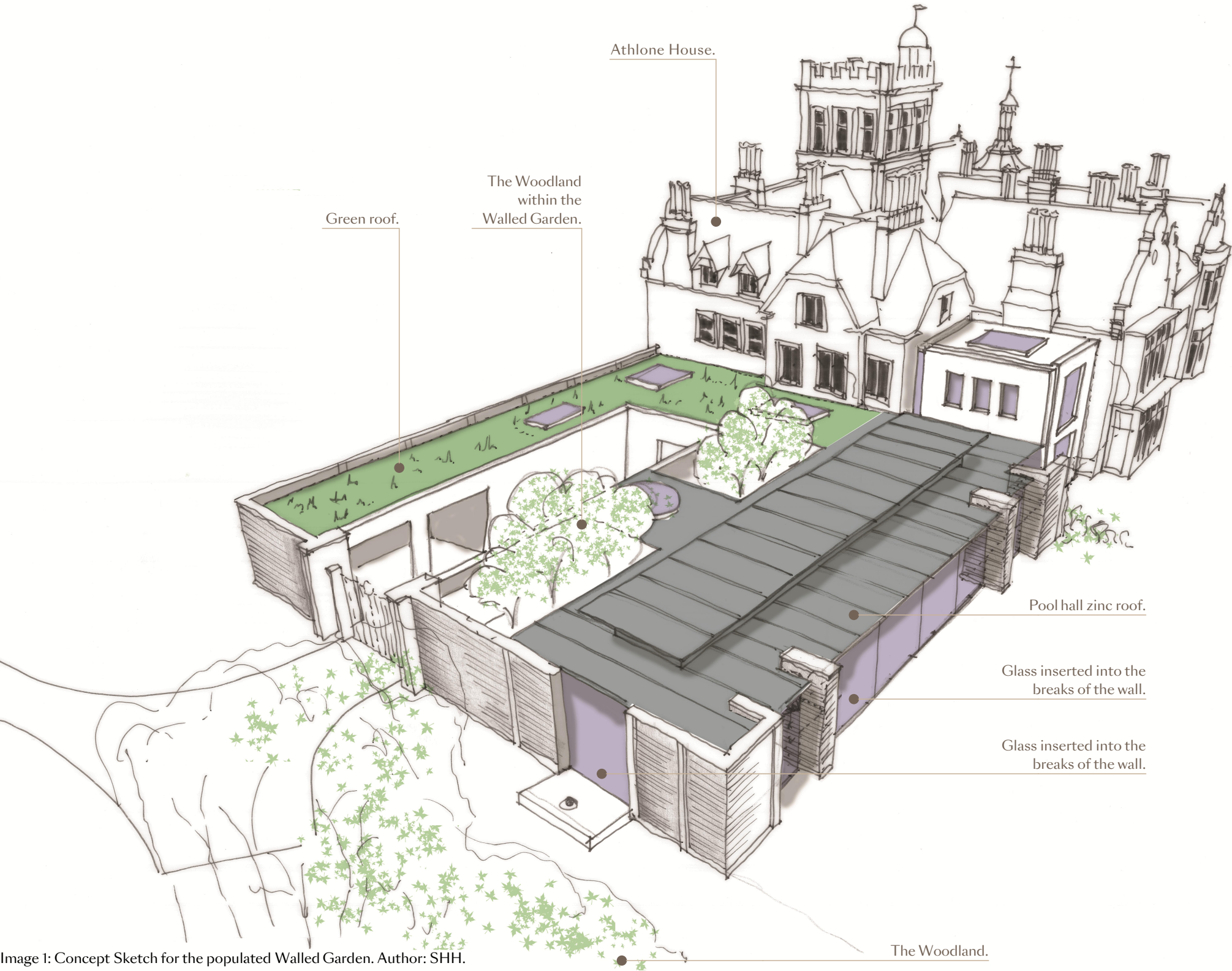


Image 1: Concept Sketch for the populated Walled Garden. Author: SHH.

The "Walled Garden"

Once the walled garden concept had been established, functions within the footprint were allocated.

The swimming pool wing sits in the same location as the original glass house. The forest from the grounds is allowed to spill into the space, harking back to the uses of the space as a glass house and fernery.

The remainder of the space within the 'walled garden' house the back of house facilities and are covered by a wild flower green roof.

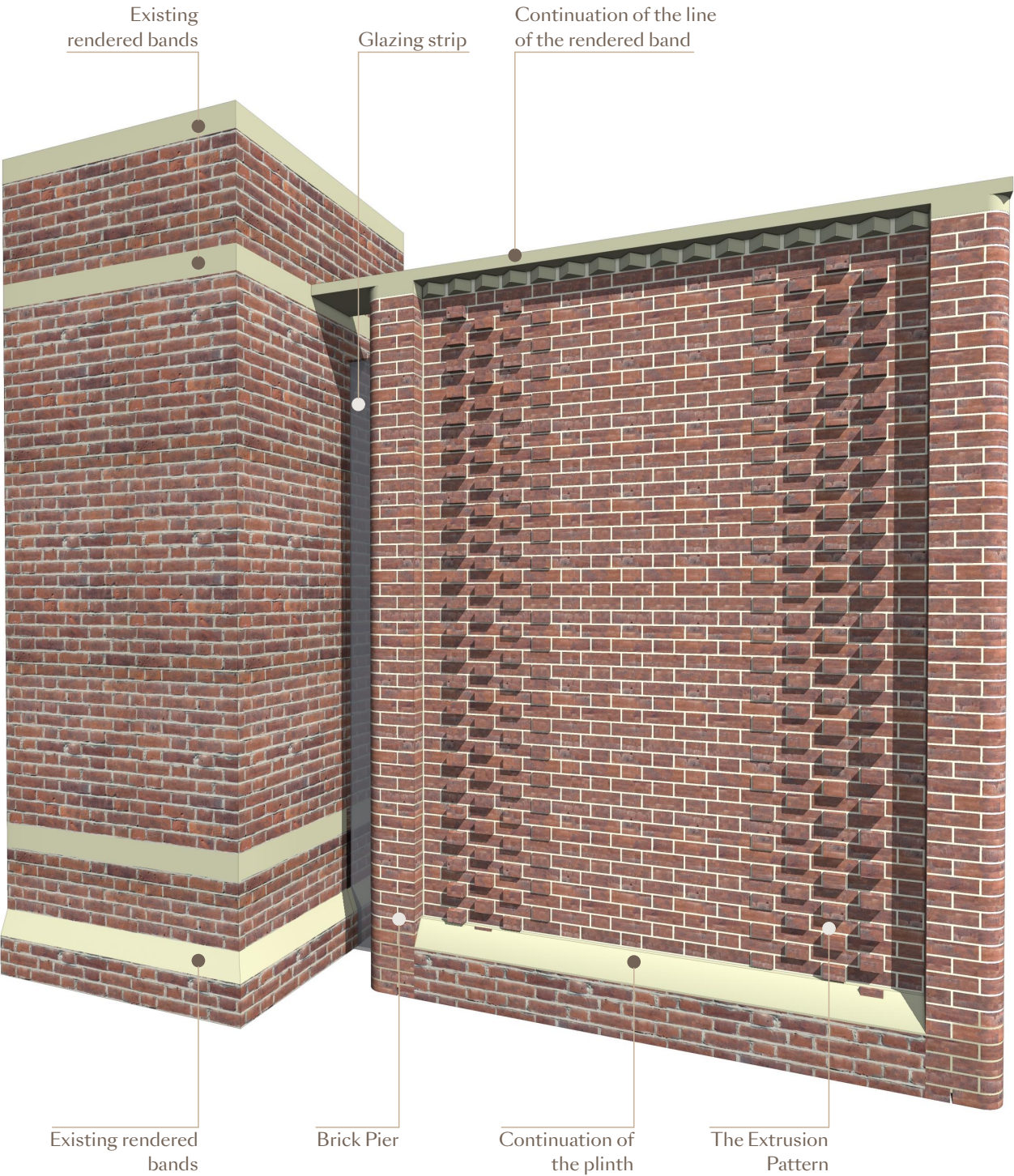


Image 1: 3D image of the Athlone House / Walled Garden junction. Author: SHH.

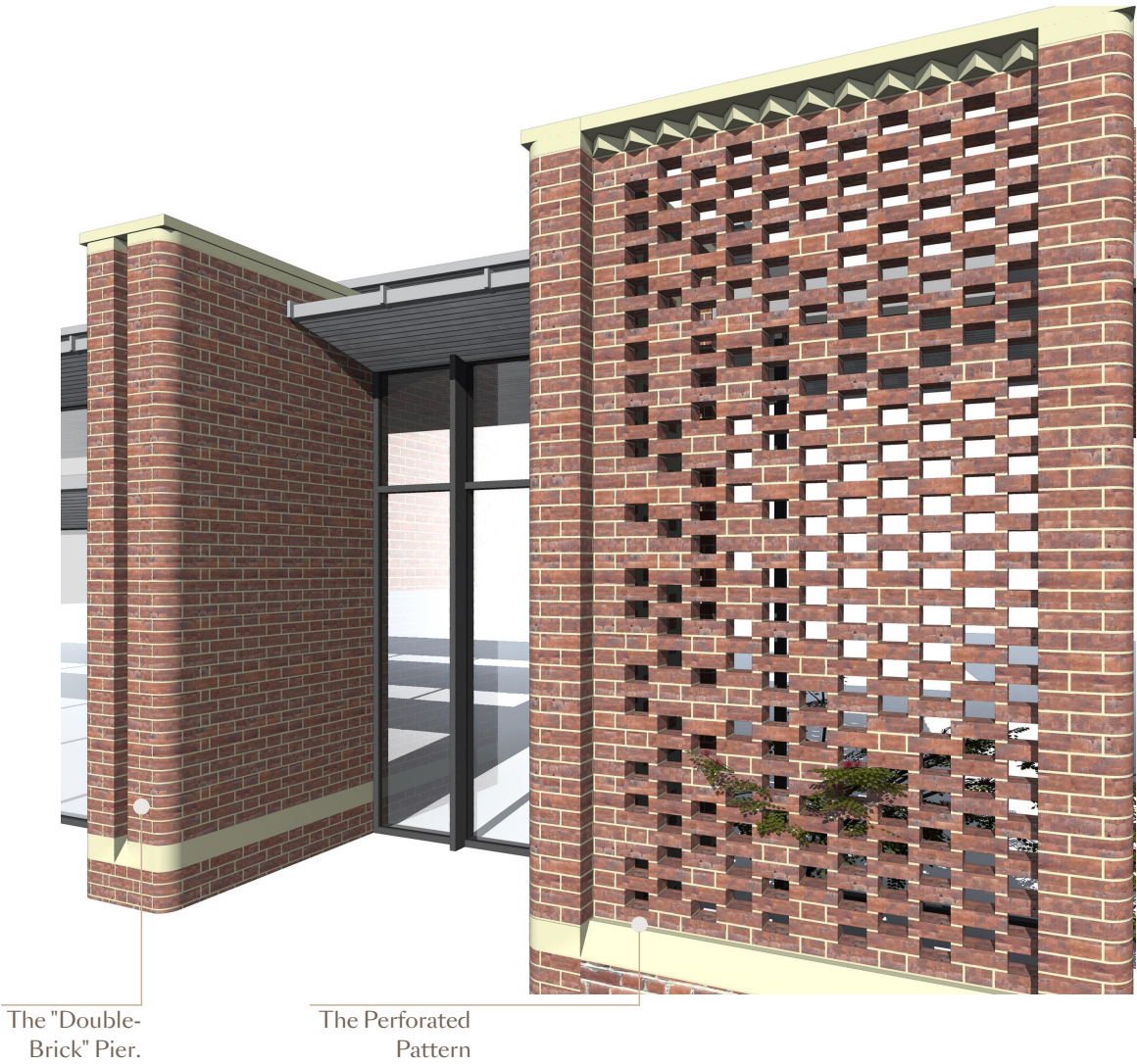


Image 2: 3D image of a perforated brick panel. Author: SHH.

The Brickwork Detailing:

The richness of detail found on a traditional walled garden often comes in the form of vegetation grown along the wall itself. Whilst the proposed walled garden for Athlone House will encourage such growth, detailing independent of this will be expressed via different methods of brickwork patterning.

The existing brickwork bond in Athlone House is Flemish Bond and the walled garden will continue this style of pattern. Expressing the detail in the brickwork by extrusion and perforation adds depth and complexity that enriches the architecture. The height of the walled garden is dictated by the existing rendered bands on Athlone House, thus continuing this strong horizontal visual element of the existing building. As the band reaches the proposed wall, it will be broken down into a more detailed, diagonal arrangement that references similar patterning that occurs on the south tower.

The extrusion pattern that occurs of the brick face will highlight the solid sections of the wall. Moving from the brick pier to the centre of each panel, the more defined extrusion will slowly return to a flush brick face in a 'fluid' transitional pattern. The extruded bricks also provide ledging for vegetation to grown on and navigate around. Behind each of these solid panels are internal service spaces that require more privacy and less light for their use.

The perforated pattern occurs where the function immediately behind these panels encourages visual, light and air permeability. The smaller brick of the Flemish Bond is removed for this pattern, however some periodically remain to create a more natural and random feel to the brick face. Where internal spaces are present behind this pattern, glass will be used to allow light through and where open spaces occur vegetation will be encouraged to grow through the random gaps in the brickwork.