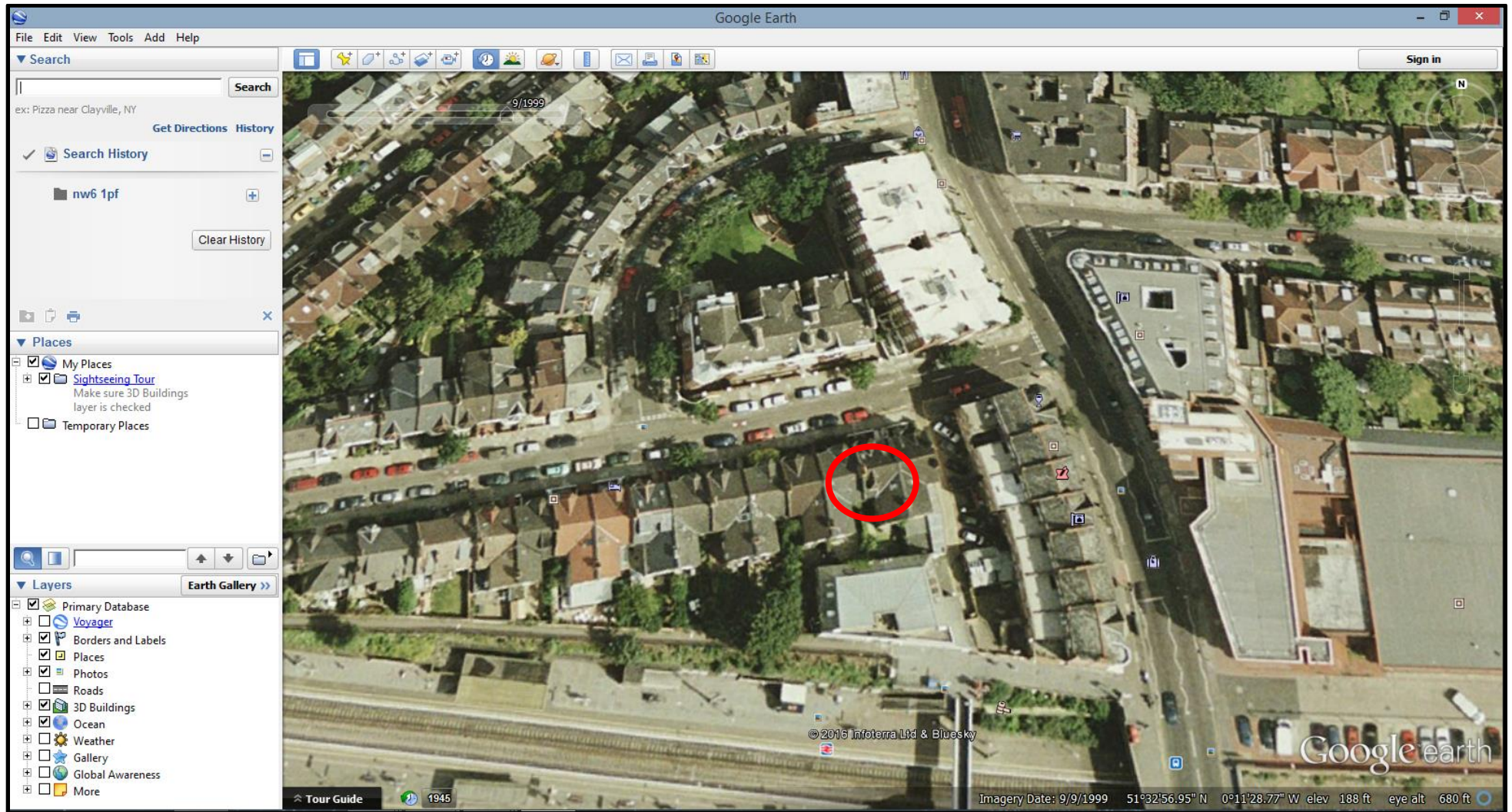


**211 Sumatra Road, London, NW6 1PF – Google Earth Historical Image – dated 09/09/1999, showing existing rear dormer window in situation.**

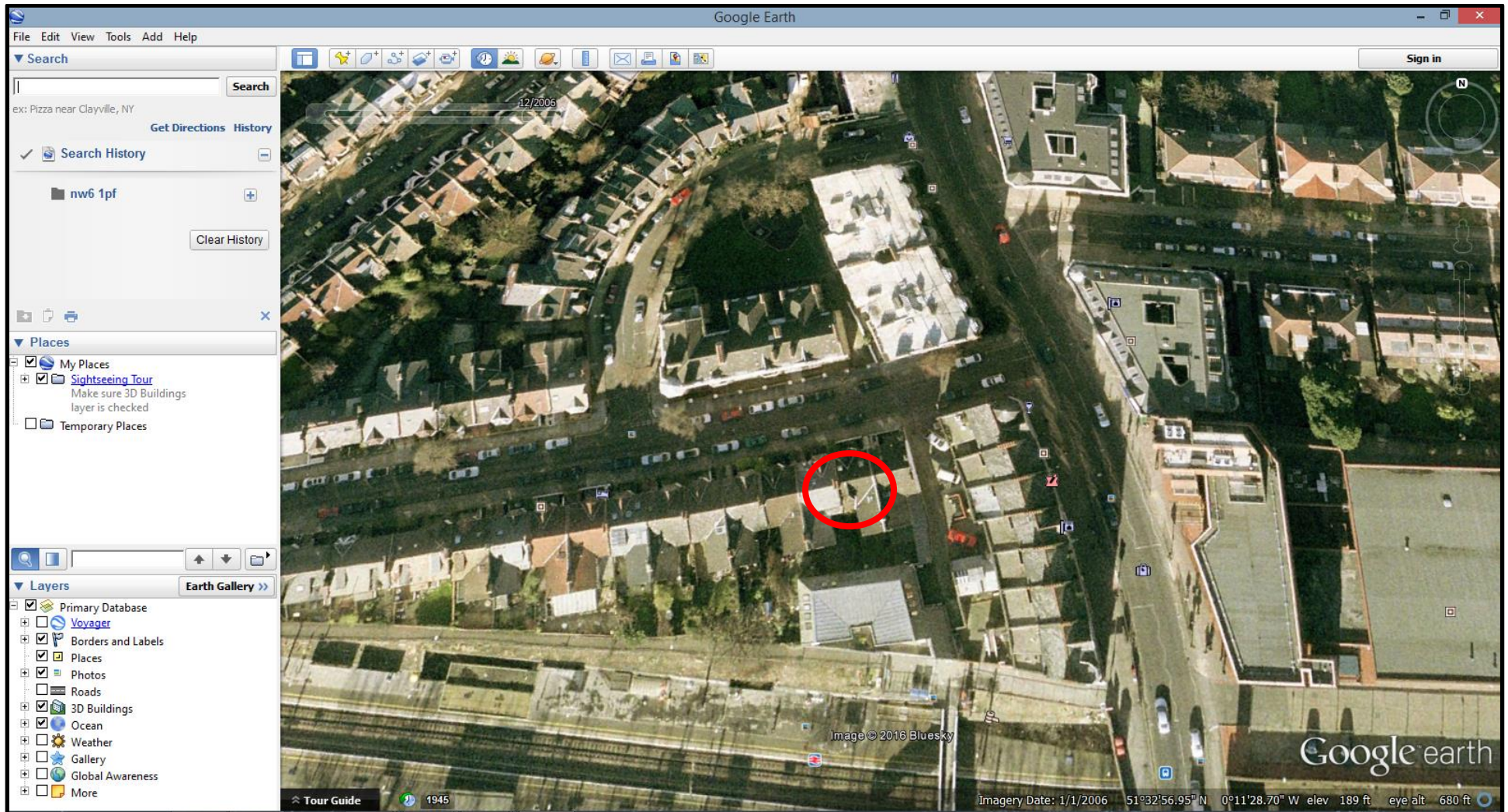




A screenshot of the Google Earth desktop application. The interface includes a top menu bar (File, Edit, View, Tools, Add, Help), a search bar on the left with the text "ex: Pizza near Clayville, NY", and a "Search History" section. Below the search bar is a "Places" panel with options like "My Places", "Sightseeing Tour", and "Temporary Places". At the bottom left is a "Layers" panel with various map layers like "Primary Database", "Voyager", "Borders and Labels", "Places", "Photos", "Roads", "3D Buildings", "Ocean", "Weather", "Gallery", "Global Awareness", and "More". The main window displays a 3D aerial view of a residential neighborhood with houses, streets, and trees. A red circle is drawn around a specific building in the center of the image. The bottom status bar shows the "Tour Guide" button, a date "1945", and coordinates "Imagery Date: 1/1/2002 51°32'57.73" N 0°11'34.94" W elev 178 ft eye alt 680 ft". The Google Earth logo is visible in the bottom right corner.



**211 Sumatra Road, London, NW6 1PF – Google Earth Historical Image – dated 01/01/2006, showing existing rear dormer window in situation.**





Images of the rear of the neighbouring property at 209 Sumatra Road, London, NW6 1PF, showing existing full width rear dormer window in situation.





Aerial image of Sumatra Road, London, NW6 1PF, showing existing rear dormer windows in situation to various properties.

