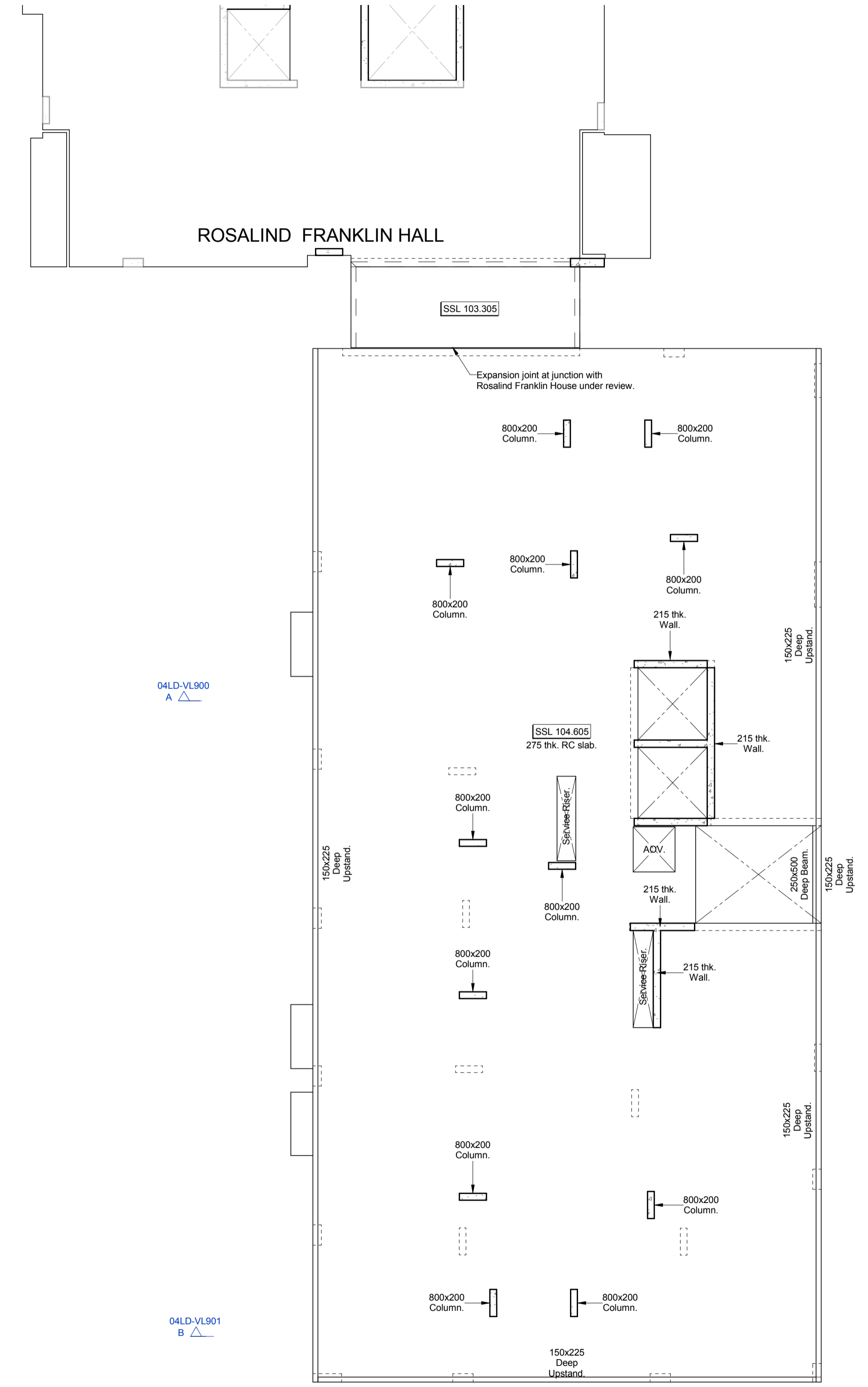


**General Notes**

1. Drawings shall be referred to for structural work only unless otherwise stated and read in conjunction with Architects, Service Engineer's and Sub-Contractor's drawings.
2. The Contractor shall check all levels and dimensions, any errors or omissions are to be reported at once to the Engineer.
3. For general notes refer to drawing No. 11581/STR-ST01

**NOTE**  
 DETAILS OF NEW TIMBER PITCHED ROOF TBC  
 SUBJECT TO ARCHITECTS DETAILS.  
 PROVISIONAL ALLOWANCE MADE FOR RC  
 UPSTANDS TO SUPPORT NEW TIMBER ROOF  
 AS NOTED ON LEVELS 4&5.

**NOTE**  
 ALL QUOTED LEVELS PROVISIONAL SUBJECT  
 TO CONFIRMATION OF ARCHITECTS DETAILS.



REV	DATE	DESCRIPTION	BY	CHKD
B	24.02.2016	Drawing number revised to comply with clients document control system requirements.	DA	TP
A	11.02.2016	Preliminary issue for comment. Updated to A&Q architect layouts.	SK/DA	TP

**PRELIMINARY**



TITLE:  
**Lord Cameron Hall  
 Level 04 Floor Plan**

PROJECT:  
**Project No. 11581  
 Kidderpore Avenue**

SCALE:	DATE:	DRAWN:	CHKD:
A1@ 1:100	Nov' 15	SK	TP

DRG NO.	REV.
9100-DRG-03LD-04900	B

**Tully De'Ath**  
 consultants

Engineering at its Best

T: 01342 828 000  
 E: info@tullydeath.com  
 W: www.tullydeath.com