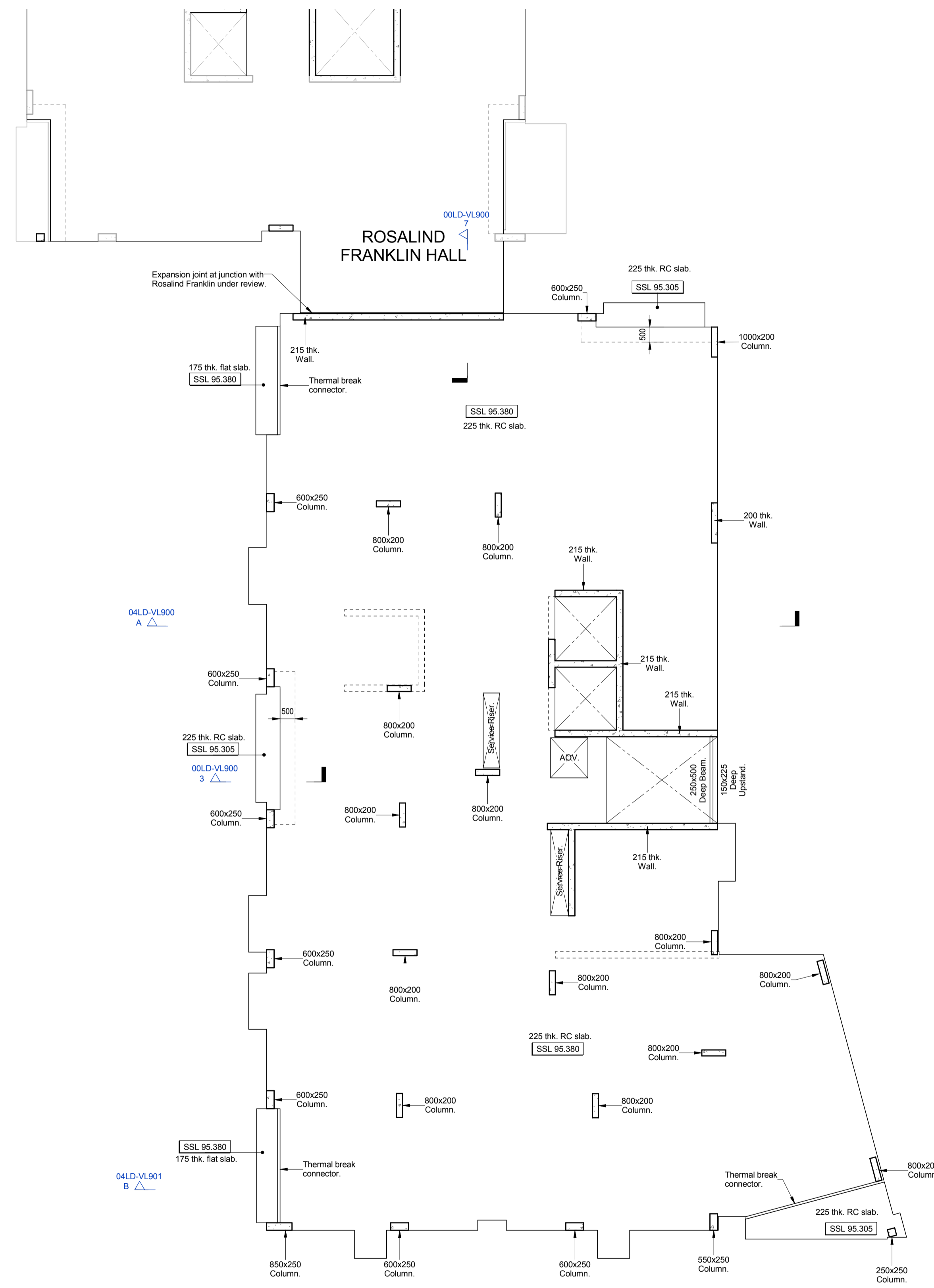


General Notes

1. Drawings shall be referred to for structural work only unless otherwise stated and read in conjunction with Architect's, Service Engineer's and Sub-Contractor's drawings.
2. The Contractor shall check all levels and dimensions, any errors or omissions are to be reported at once to the Engineer.
3. For general notes refer to drawing No. 11581/STR-ST01

NOTE
ALL QUOTED LEVELS PROVISIONAL SUBJECT TO CONFIRMATION OF ARCHITECTS DETAILS.

NOTE
PROVISIONAL ALLOWANCE TO BE MADE FOR MASONRY SUPPORT TO LEVEL 1 SLAB PERIMETER TO SUPPORT 2 STORIES OF BRICKWORK.



REV	DATE	DESCRIPTION	BY	CHKD
B	24.02.2016	Drawing number revised to comply with clients document control system requirements.	DA	TP
A	11.02.2016	Preliminary issue for comment. Updated to A&Q architect layouts.	SK/DA	TP

PRELIMINARY



TITLE:
**Lord Cameron Hall
Level 01 Floor Plan**

PROJECT:
**Project No. 11581
Kidderpore Avenue**

SCALE:	DATE:	DRAWN:	CHKD:
A1@ 1:100	Nov' 15	SK	TP

DRG NO.	REV.
9100-DRG-03LD-01900	B

Tully De'Ath
consultants

Engineering at its Best

T: 01342 828 000
E: info@tullydeath.com
W: www.tullydeath.com