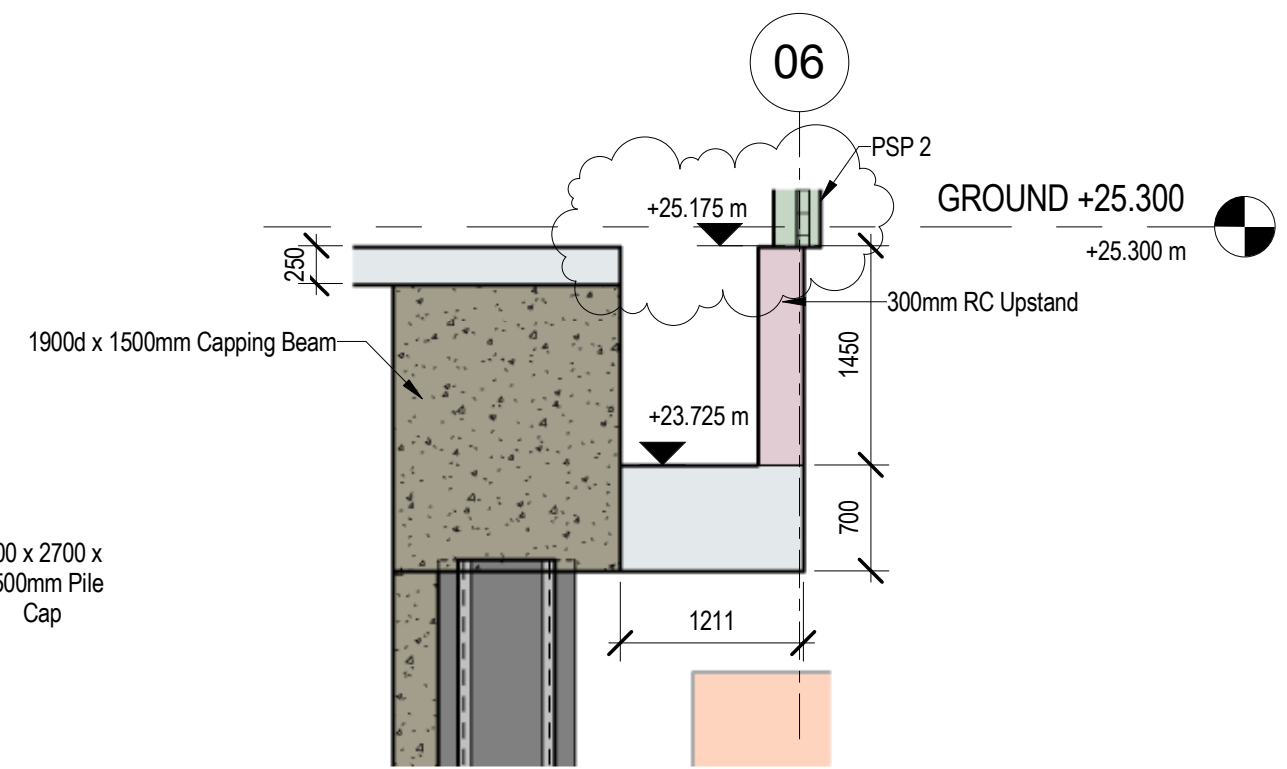


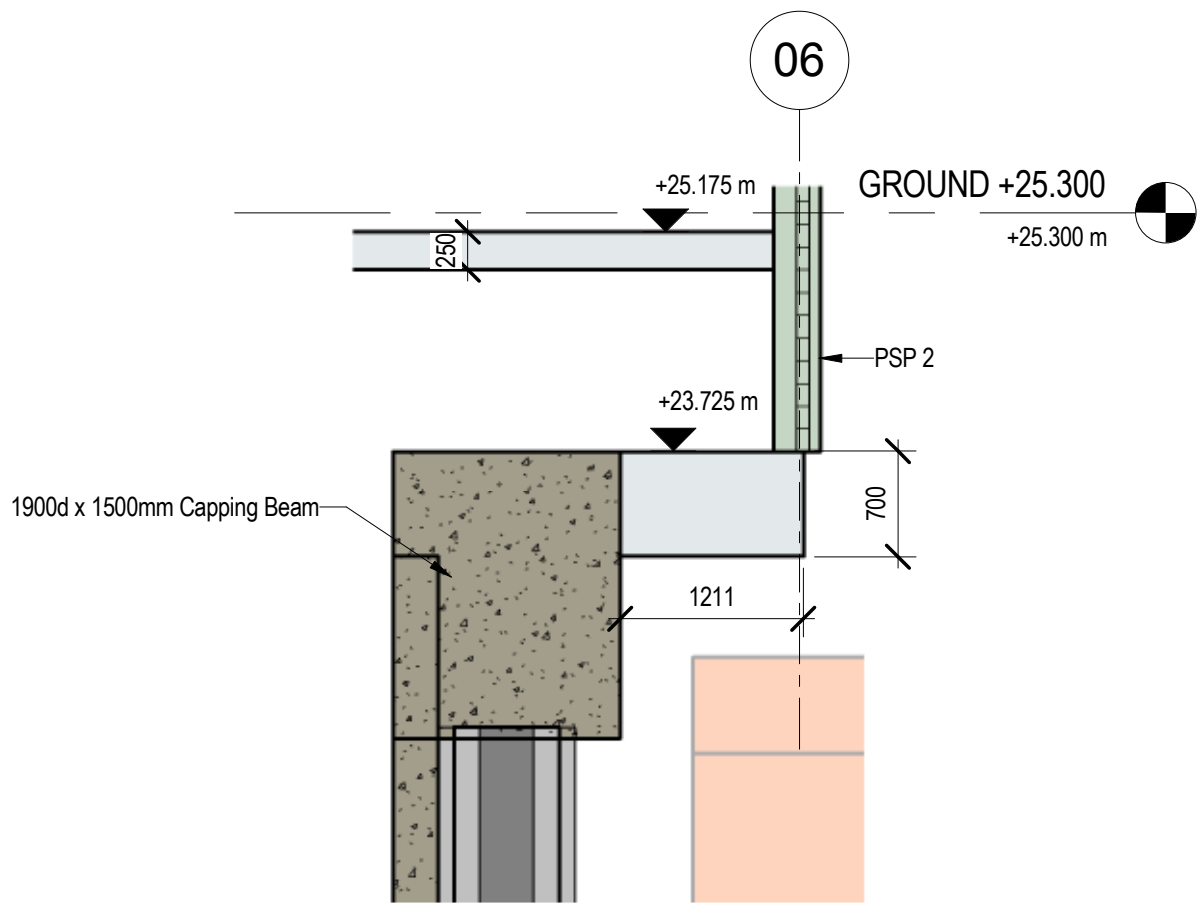
GROUND BEAMS AND CAPPING BEAMS

1 : 100



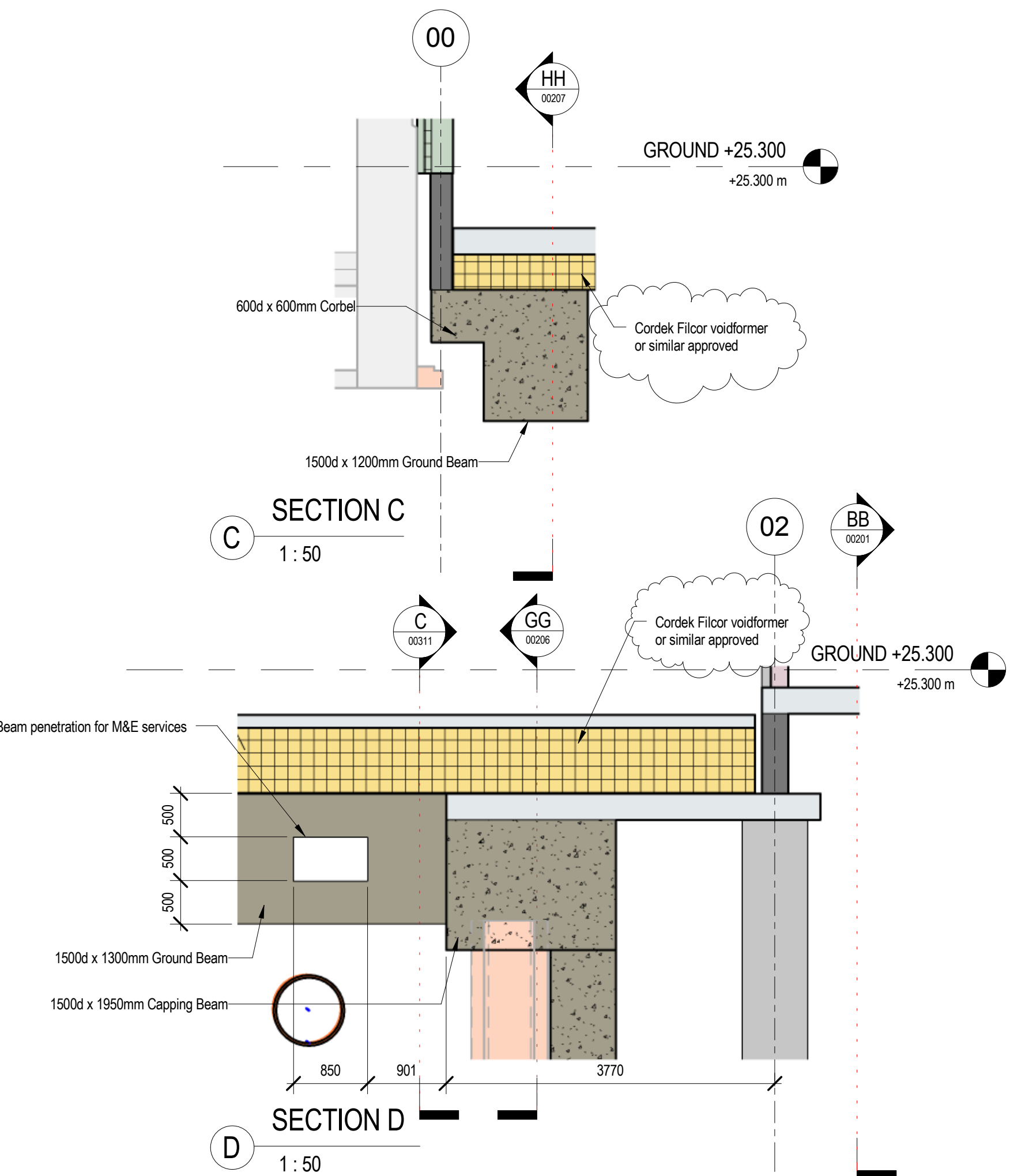
SECTION A

1 : 50



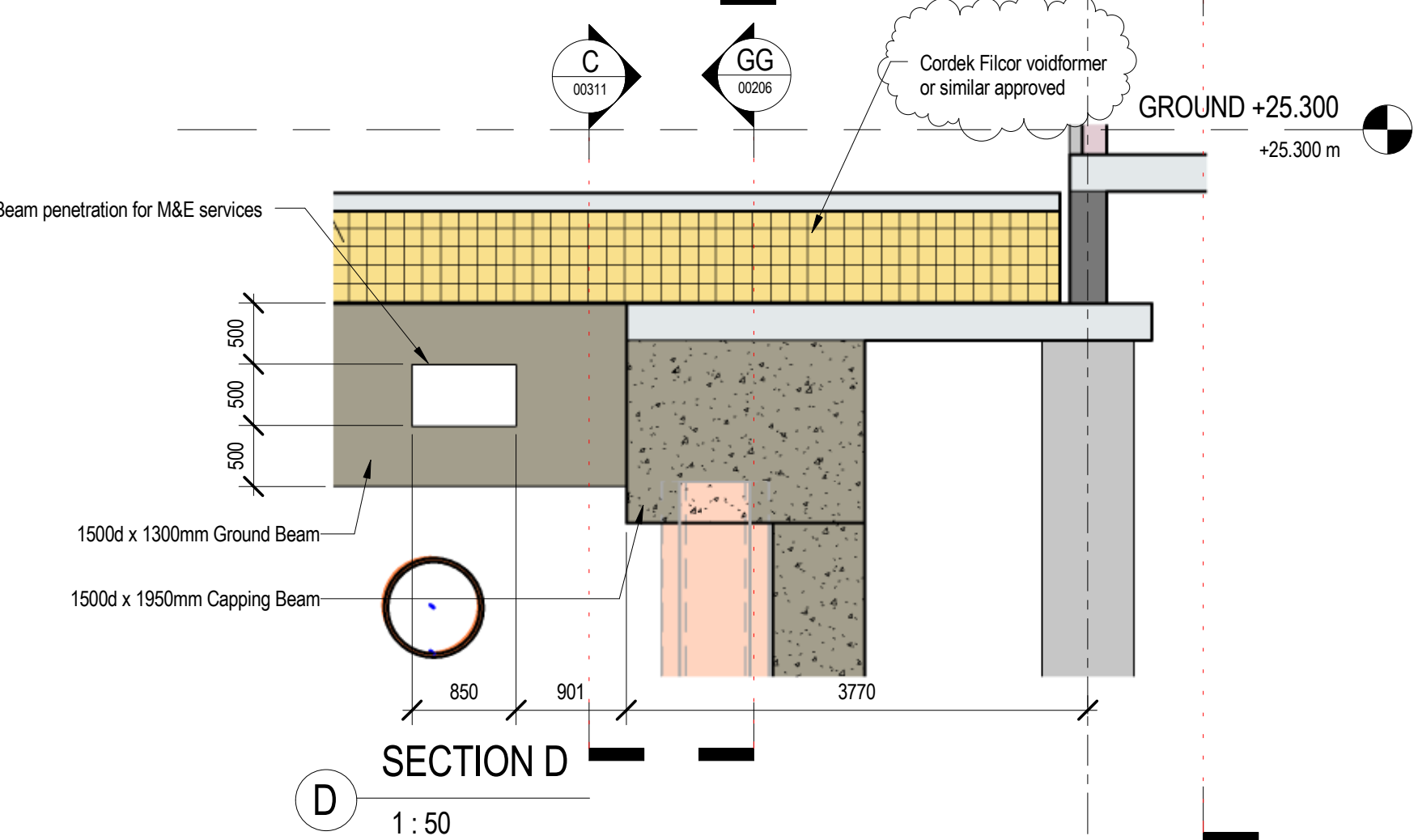
SECTION B

1 : 50



SECTION C

1 : 50



SECTION D

1 : 50

NOTES:

1. This drawing is to be read in conjunction with all relevant Architects and Engineers drawings, details and specifications.
2. Do not scale this drawing. All details and dimensions are to be checked by the contractor and fabricator onsite prior to commencement of construction/fabrication. Any discrepancies are to be reported to the Engineer. Any existing dimensions noted on this drawing are to be checked by the contractor prior to commencement of works.
3. Any ambiguities, omissions and errors on the drawings, shall be brought to the Engineers attention immediately.
4. All dimensions are in millimetres unless noted otherwise.
5. All works to be carried out in accordance with the relevant British Standards, Codes of Practice and Building Practice.
6. Contractor to ascertain the location of all services on site prior to starting any excavations works and report and potential problems immediately.

P05	REVISED AS CLOUDED	03/03/16	AL	SS
P04	GATEHOUSE GROUND BEAMS REVISED	19/01/16	AL	SS
P03	LEVELS OF CAPPING BEAM REVISED	04/12/15	AL	SS
P02	REVISED AS CLOUDED, GROUND BEAM ADDED	23/11/15	AL	SS
P01	PRELIMINARY TENDER ISSUE	09/11/15	AL	SS
Rev:	Description:	Date:	By:	Chkd:

curtins

40 Compton Street, London, EC1V 0BD
t: 020 7324 2240 f: 020 7324 2241
e: london@curtins.com www.curtins.com

Structures • Civils • Environmental • Infrastructure • Urban Regeneration • Health & Safety • Dispute Resolution
Birmingham • Bristol • Cardiff • Douglas • Edinburgh • Kendal • Leeds • Liverpool • London • Manchester • Nottingham

Status:	CONTRACTOR'S PROPOSAL			
Project:	UCL - NEW STUDENT CENTRE			
Drig Title:	CAPPING BEAM AND GROUND BEAMS			
Scale:	Size:	First Issue:	Drawn:	Checked:
As indicated	A1	08/10/2015	AP	SS
Drig No:	031- 51- 0200- DR- S- 00113- 00			Rev:
				P05