

Notes

- TO BE READ IN CONJUNCTION WITH STRUCTURAL ENGINEER DRAWINGS
- TO BE READ IN CONJUNCTION WITH MECHANICAL ENGINEER DRAWINGS
- 1 HOUR FIRE RATING TO ALL STRUCTURAL ELEMENTS.
- 1 HOUR FIRE RATING TO ALL INTERNAL PARTITIONS BETWEEN DIFFERENT UNITS
- 30 MIN. FIRE RATING TO ALL INTERNAL PARTITIONS AND FLOORS
- ALL WORKS TO COMPLY WITH BUILDING REGULATIONS

LEGEND

- BEDROOM
- BATHROOM
- LIVING
- KITCHEN
- LANDING
- HOT WATER TANK
- FUNCTION ROOM
- FLAT ENTRANCE DOOR
- SERVICES RISER

Existing elements retained

New partitions

200mm Lightweight blockwork

Engineered timber floor

Tiled floor

Flat panel radiator to M+E drawings

Towel rail radiator to bathrooms

Revision Date Reason

Revision	Date	Reason	Initial
/	18.02.16	DETAIL DESIGN	GM
A	21.04.16	DETAIL DESIGN	GM
B	07.06.16	DETAIL DESIGN	GM
C	14.06.16	DETAIL DESIGN	GM

Dimensions based on topological survey by EPC commercial surveys Ltd
All dimensions must be checked on site and not scaled from this drawing
© Mark Fairhurst Ltd.

mark fairhurst ARCHITECTS

48A, Union Street, London, SE1 1TD, T 020 7407 7070, E info@mark-fairhurst.co.uk

Project: Cock Tavern, 23 Phoenix Road, London NW1 1HB

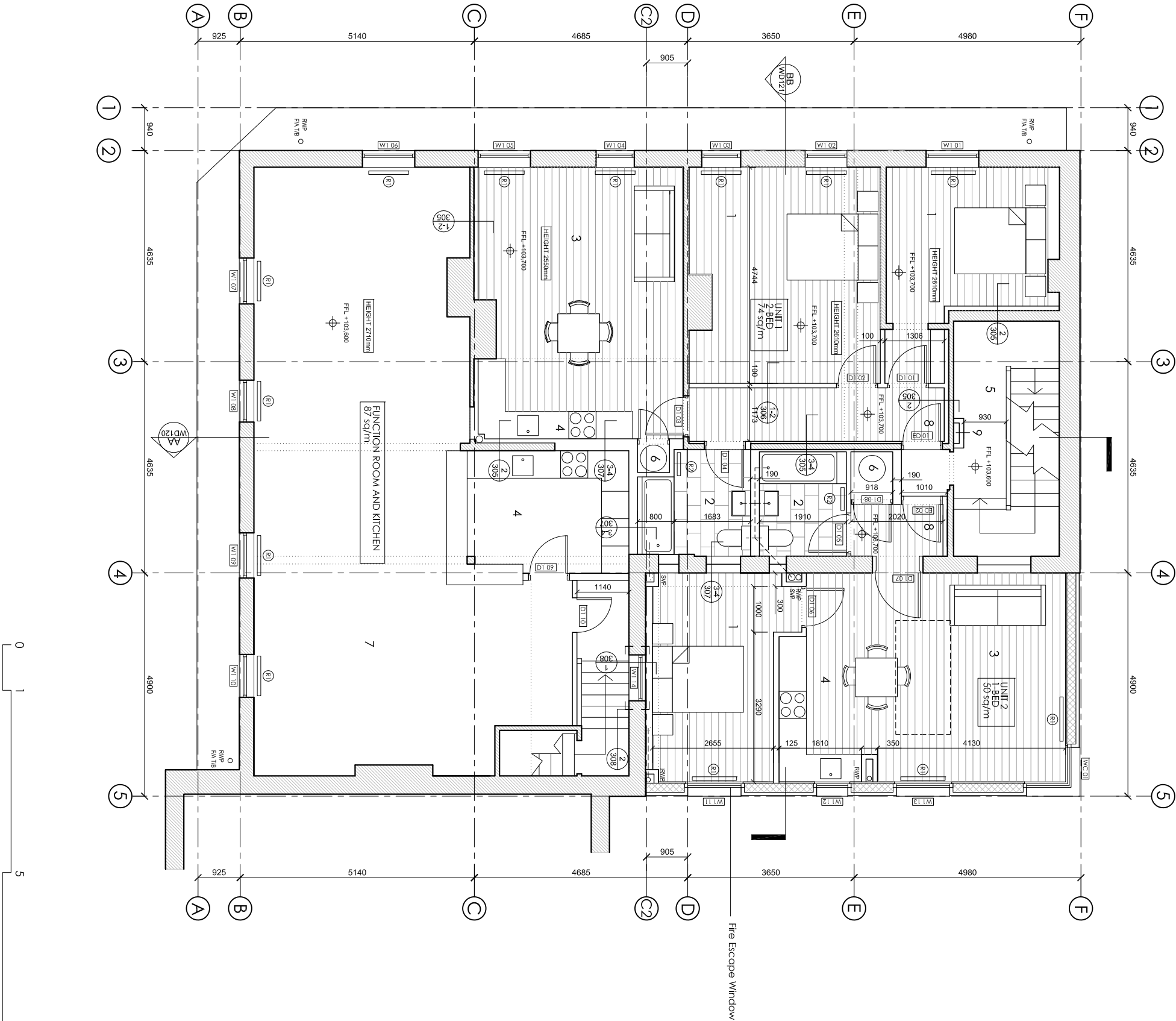
Client: Flamestike Ltd.

Drawing title: Proposed First Floor Plan

Scale: 1:100@A3, 1:50@A1 Date: 14.06.16 Drawn by: GM

Project number: 1250 Drawing number: WD112

Status: DETAIL DESIGN Revision: C



Notes

- TO BE READ IN CONJUNCTION WITH STRUCTURAL ENGINEER DRAWINGS
- TO BE READ IN CONJUNCTION WITH MECHANICAL ENGINEER DRAWINGS
- 1 HOUR FIRE RATING TO ALL STRUCTURAL ELEMENTS.
- 1 HOUR FIRE RATING TO ALL INTERNAL PARTITIONS BETWEEN DIFFERENT UNITS
- 30 MIN. FIRE RATING TO ALL INTERNAL PARTITIONS AND FLOORS
- ALL WORKS TO COMPLY WITH BUILDING REGULATIONS

LEGEND

- BEDROOM
- BATHROOM
- LIVING
- KITCHEN
- CORRIDOR
- ENSUITE BATHROOM
- UTILITY
- STAIR TO THIRD FLOOR
- SERVICES RISER
- EXTRACT FLUE
- FLAT ENTRANCE DOOR
- SKYLIGHT
- FLAT ROOF
- HOT WATER TANK

- Existing elements retained
- New partitions
- 200mm lightweight blockwork
- Engineered timber floor
- Tiled floor
- Flat panel radiator to M+E drawings
- Towel rail radiator to bathrooms
- Ventilation Duct

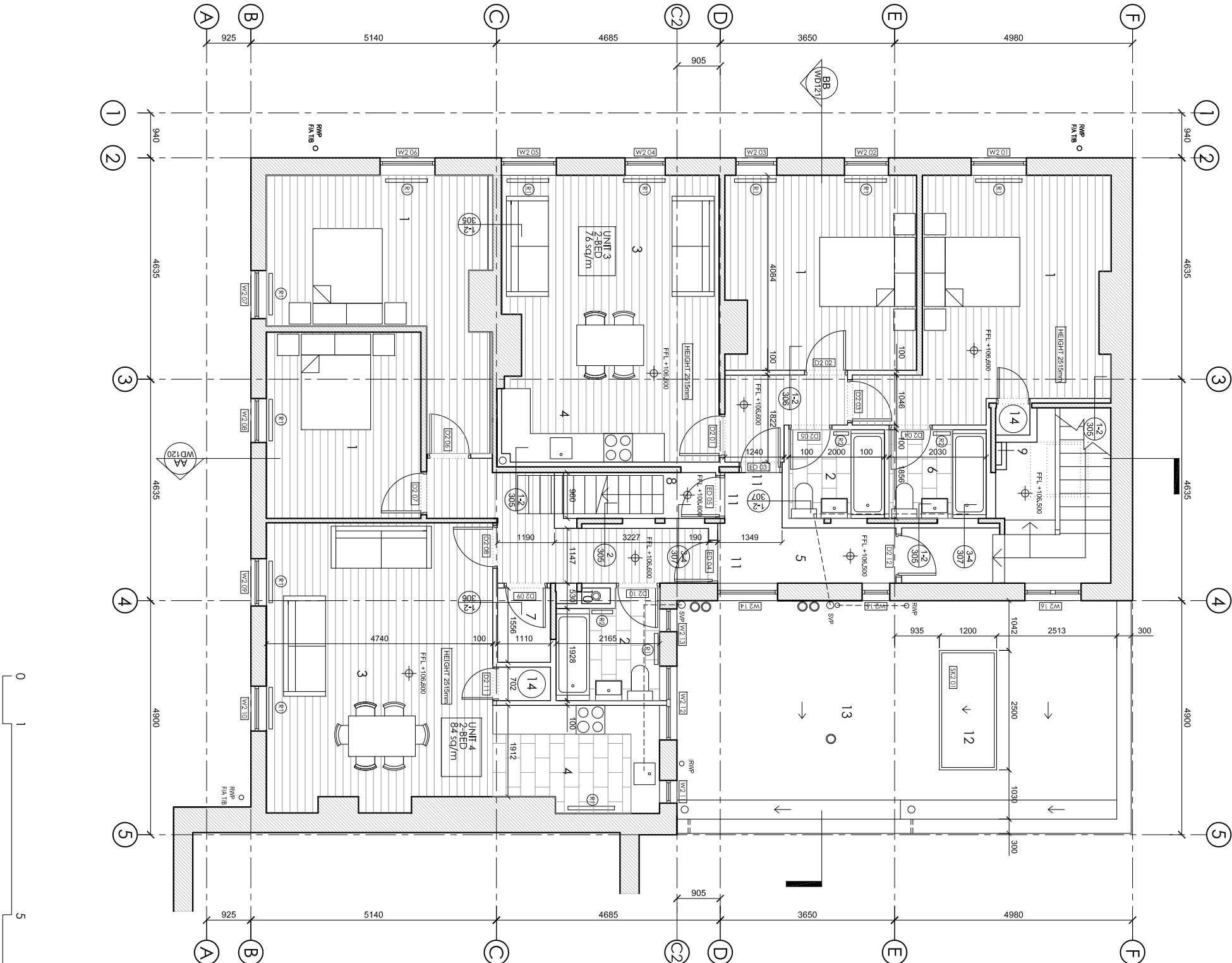
Revision	Date	Reason	Initial
/	18.02.16	DETAIL DESIGN	GM
A	21.04.16	DETAIL DESIGN	GM
B	07.06.16	DETAIL DESIGN	GM
C	14.06.16	DETAIL DESIGN	GM

Dimensions based on topological survey by EPC commercial surveys Ltd
All dimensions must be checked on site and not scaled from this drawing
© Mark Fairhurst Ltd.

mark fairhurst ARCHITECTS

48A Union Street, London, SE1 1TD, T 020 7407 7070, E info@mark-fairhurst.co.uk
Project: Cock Tavern, 23 Phoenix Road, London NW1 1HB
Client: Flamesrike Ltd.

Drawing title: Proposed Second Floor Plan
Scale: 1:100@A3, 1:50@A1
Project number: 1250
Status: DETAIL DESIGN
Date: 14.06.16
Drawing number: WD114
Drawn by: GM
Revision: C



Notes

- TO BE READ IN CONJUNCTION WITH STRUCTURAL ENGINEER DRAWINGS
- TO BE READ IN CONJUNCTION WITH MECHANICAL ENGINEER DRAWINGS
- 1 HOUR FIRE RATING TO ALL STRUCTURAL ELEMENTS.
- 1 HOUR FIRE RATING TO ALL INTERNAL PARTITIONS BETWEEN DIFFERENT UNITS
- 30 MIN. FIRE RATING TO ALL INTERNAL PARTITIONS AND FLOORS
- ALL WORKS TO COMPLY WITH BUILDING REGULATIONS

LEGEND

- LIVING
- BEDROOM
- BATHROOM
- ENSUITE BATHROOM
- LANDING
- DORMER WINDOW
- KITCHEN
- TILED PITCHED ROOF
- FIRST FLOOR SKYLIGHT
- KITCHEN EXTRACT FLUE
- HOT WATER TANK
- AOV

- Existing elements retained
- New partitions
- 200mm Lightweight blockwork
- Engineered timber floor
- Tiled floor
- Flat panel radiator to M+E drawings
- Towel rail radiator to bathrooms

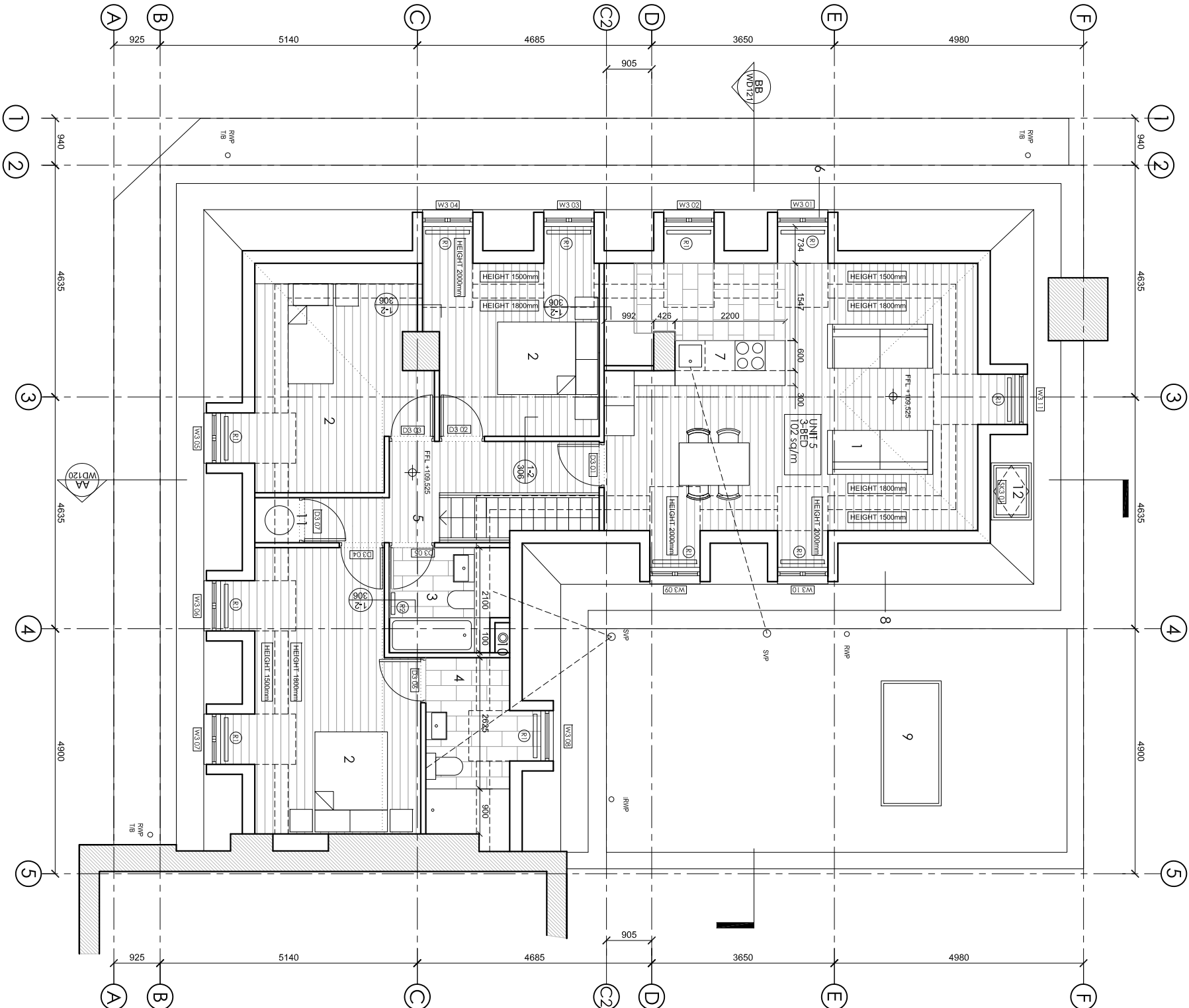
Revision	Date	Reason	Initial
/	18.02.16	DETAIL DESIGN	GM
A	21.04.16	DETAIL DESIGN	GM
B	07.06.16	DETAIL DESIGN	GM
C	14.06.16	DETAIL DESIGN	GM

Dimensions based on topological survey by EPC commercial surveys Ltd
All dimensions must be checked on site and not scaled from this drawing
© Mark Fairhurst Ltd.

mark fairhurst ARCHITECTS

48A Union Street, London, SE1 1TD. T 020 7407 7070. E info@mark-fairhurst.co.uk
Project: Cock Tavern, 23 Phoenix Road, London NW1 1HB
Client: Flamestike Ltd.

Drawing title: Proposed Third Floor Plan
Scale: 1:100@A3, 1:50@A1
Date: 14.06.16
Project number: 1250
Status: DETAIL DESIGN
Drawn by: GM
Drawing number: WD116
Revision: C



Notes

- TO BE READ IN CONJUNCTION WITH STRUCTURAL ENGINEER DRAWINGS
- TO BE READ IN CONJUNCTION WITH MECHANICAL ENGINEER DRAWINGS
- 1 HOUR FIRE RATING TO ALL STRUCTURAL ELEMENTS.
- 30 MIN. FIRE RATING TO ALL INTERNAL PARTITIONS AND FLOORS
- ALL WORKS TO COMPLY WITH BUILDING REGULATIONS

LEGEND

1. CELLAR
2. STORE
3. LOUNGE BAR
4. RESIDENTIAL STAIR
5. BEDROOM
6. CUPBOARD
7. BARREL DROP
8. LIVING ROOM
9. CORRIDOR
10. BATHROOM
11. LOBBY
12. KITCHEN
13. STAIR LANDING
14. ENSUITE BATHROOM
15. FUNCTION ROOM

Revision	Date	Reason	Initial
/	18.02.16	DETAIL DESIGN	Gm
A	21.04.16	DETAIL DESIGN	Gm
B	07.06.16	DETAIL DESIGN	Gm

Dimensions based on topological survey by EPC commercial surveys Ltd
All dimensions must be checked on site and not scaled from this drawing
© Mark Fairhurst Ltd.

mark fairhurst ARCHITECTS

48A Union Street, London, SE1 1TD. T 020 7407 7070, E info@mark-fairhurst.co.uk

Project: Cock Tavern, 23 Phoenix Road, London NW1 1HB

Client: Flamestrike Ltd.

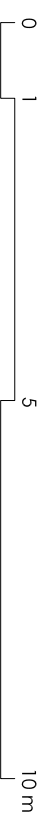
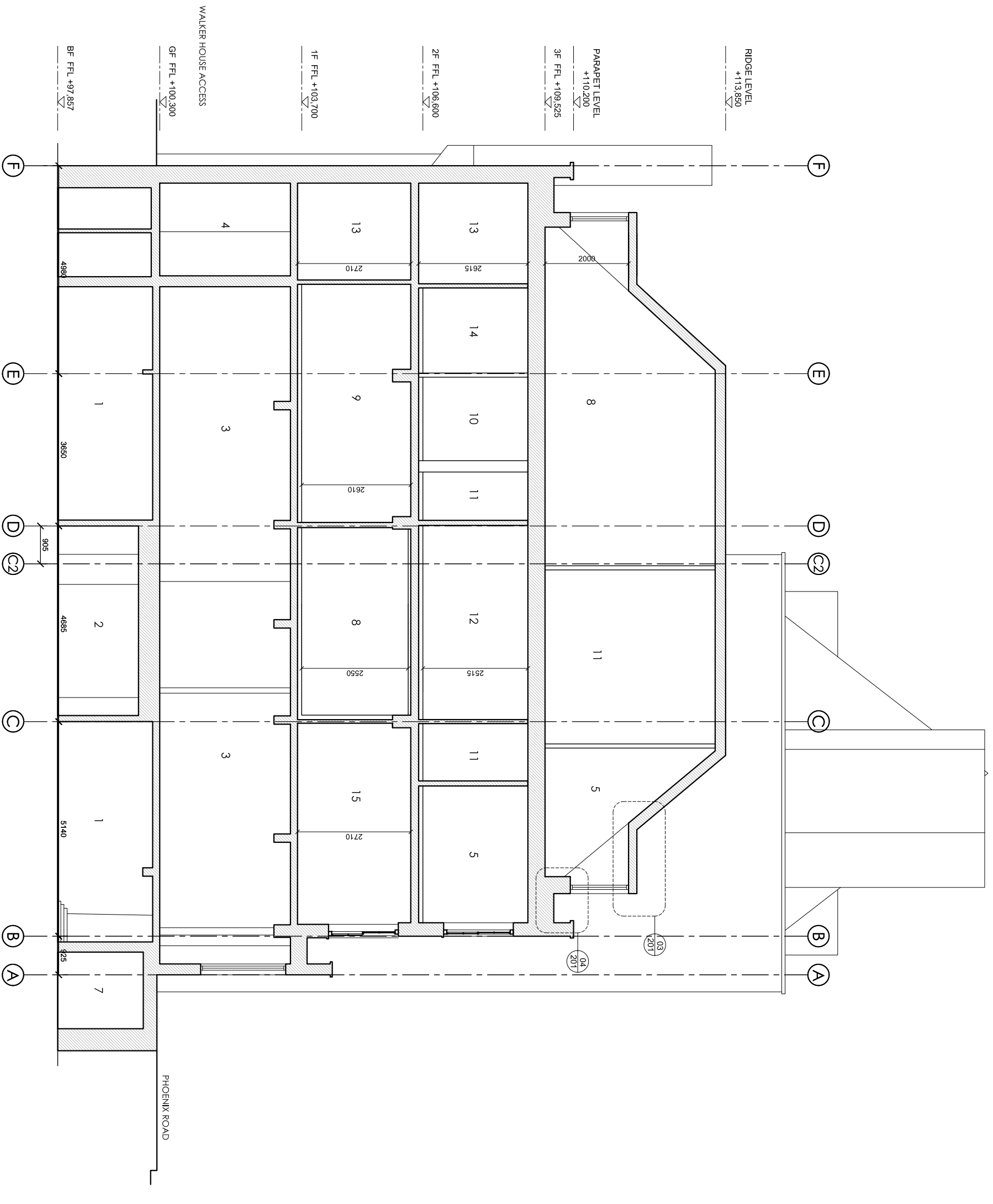
Drawing title: Proposed Section AA

Scale: 1:100@A3, 1:50@A1 Date: 07.06.16 Drawn by: GM

Project number: 1250 Drawing number: WD120

Status: DETAIL DESIGN

Revision: B



Notes

- TO BE READ IN CONJUNCTION WITH STRUCTURAL ENGINEER DRAWINGS
- TO BE READ IN CONJUNCTION WITH MECHANICAL ENGINEER DRAWINGS
- 1 HOUR FIRE RATING TO ALL STRUCTURAL ELEMENTS.
- 30 MIN. FIRE RATING TO ALL INTERNAL PARTITIONS AND FLOORS
- ALL WORKS TO COMPLY WITH BUILDING REGULATIONS

LEGEND

1. CELLAR
2. LOUNGE BAR
3. BEDROOM
4. CORRIDOR
5. WC
6. FEMALE WC
7. LIVING ROOM
8. SKYLIGHT
9. DORMER WINDOW
10. BATHROOM
11. MALE WC
12. DORMER WINDOW

Revision	Date	Reason	Initial
/	18.02.16	DETAIL DESIGN	GM
A	21.04.16	DETAIL DESIGN	GM
B	07.06.16	DETAIL DESIGN	GM
C	28.06.16	DETAIL DESIGN	GM

Dimensions based on topological survey by EPC commercial surveys Ltd
All dimensions must be checked on site and not scaled from this drawing
© Mark Fairhurst Ltd.

mark fairhurst ARCHITECTS

48A Union Street, London, SE1 1TD, T 020 7407 7070, E info@mark-fairhurst.co.uk

Project: Cock Tavern, 23 Phoenix Road, London NW1 1HB

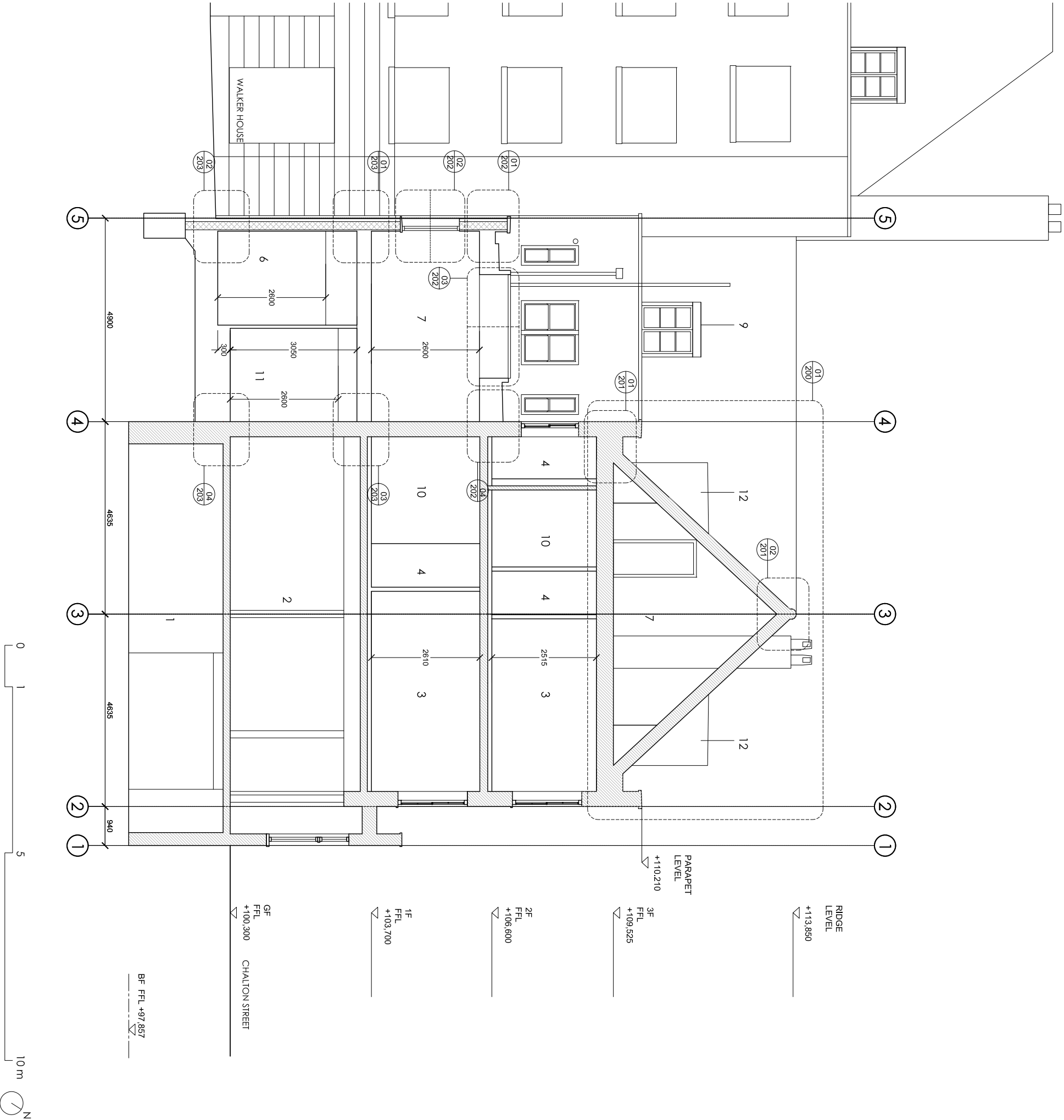
Client: Flamesrike Ltd.

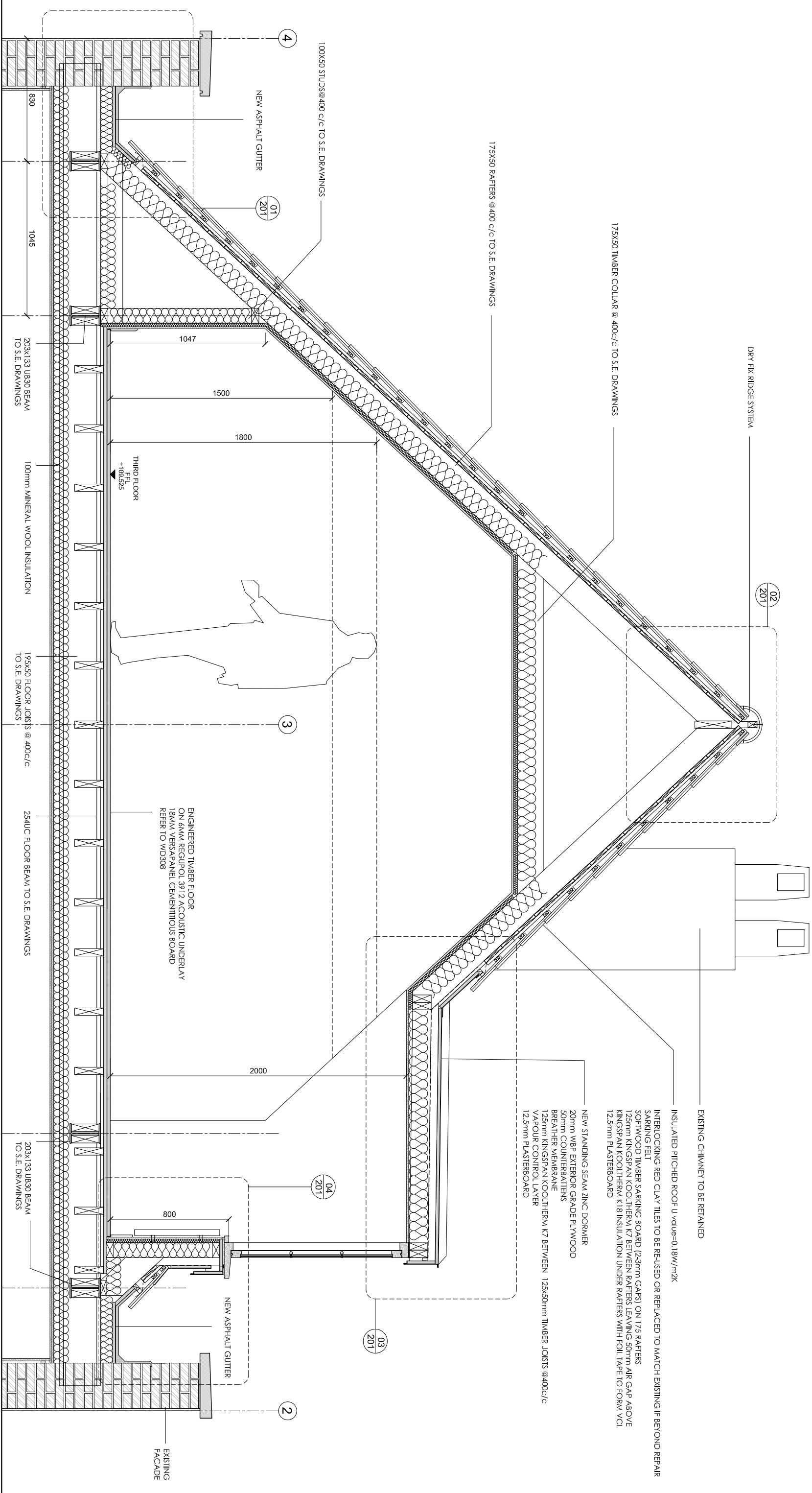
Drawing title: Proposed Section BB

Scale: 1:100@A3, 1:50@A1 Date: 07.06.16 Drawn by: GM

Project number: 1250 Drawing number: WD121

Status: DETAIL DESIGN Revision: C





Revision	Date	Reason	Initial	Notes
/	19.05.16	DETAIL DESIGN	GM	
A	07.06.16	DETAIL DESIGN	GM	

- FOLLOW MANUFACTURERS INSTRUCTIONS/RECOMMENDATIONS FOR ALL INSTALLATIONS
- REFER TO RELATIVE CONSULTANTS REPORTS FOR FURTHER DETAILS WHEN APPLICABLE
- TO BE READ IN CONJUNCTION WITH STRUCTURAL ENGINEER DRAWINGS
- TO BE READ IN CONJUNCTION WITH MECHANICAL ENGINEER DRAWINGS
- 1 HOUR FIRE RATING TO ALL STRUCTURAL ELEMENTS.
- 30 MIN. FIRE RATING TO ALL INTERNAL PARTITIONS AND FLOORS
- IF THE MATERIAL IS NOT PRESCRIBED, CONTRACTOR TO PROVIDE PROPOSALS AND SAMPLES FOR APPROVAL PRIOR TO ORDER
- CONTRACTOR TO COMPLY WITH ALL BUILDING CONTROL REQUIREMENTS

Dimensions based on topographical survey by EPC commercial surveys Ltd
All dimensions must be checked on site and not scaled from this drawing
© Mark Fairhurst Ltd.

mark fairhurst architects

48A Union Street, London, SE1 1TD, T 020 7407 7070, E info@mark-fairhurst.co.uk

Project: Cock Tavern, 23 Phoenix Road, London NW1 1HB

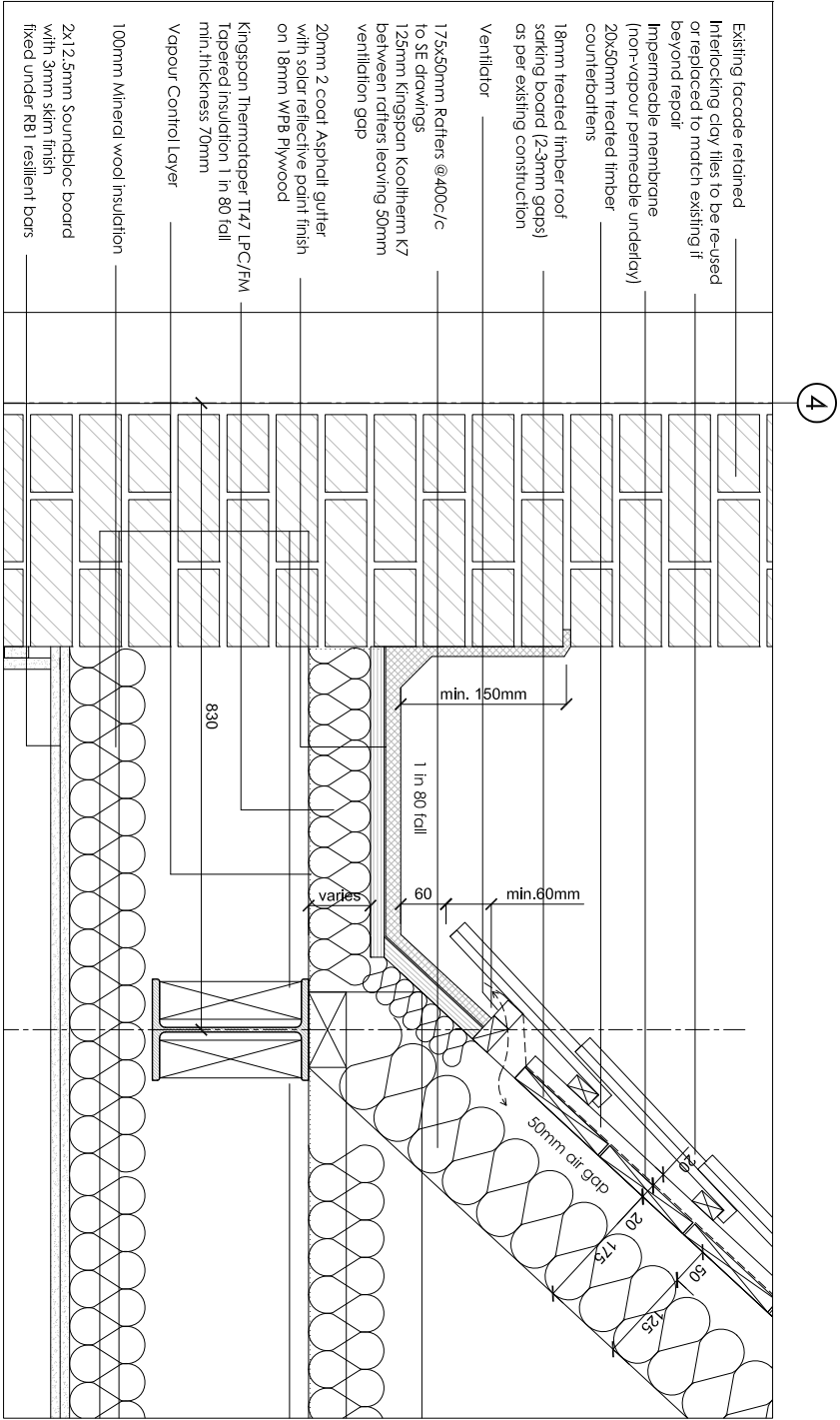
Client: Flamesrike Ltd.

Drawing title: Proposed Detailed Roof Section BB

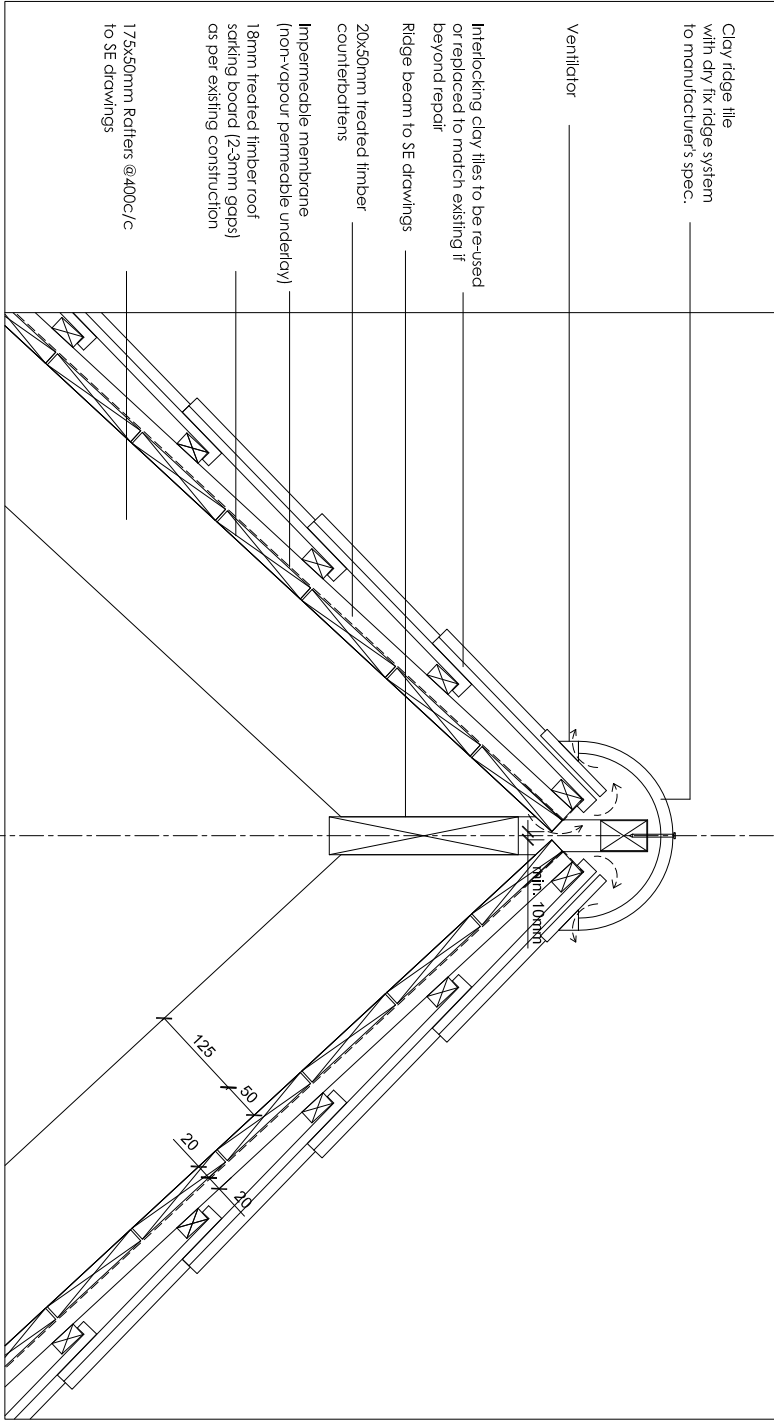
Scale: 1:50@A3, 1:25@A1 Date: 07.06.16 Drawn by: GM

Project number: 1250 Drawing number: WD200

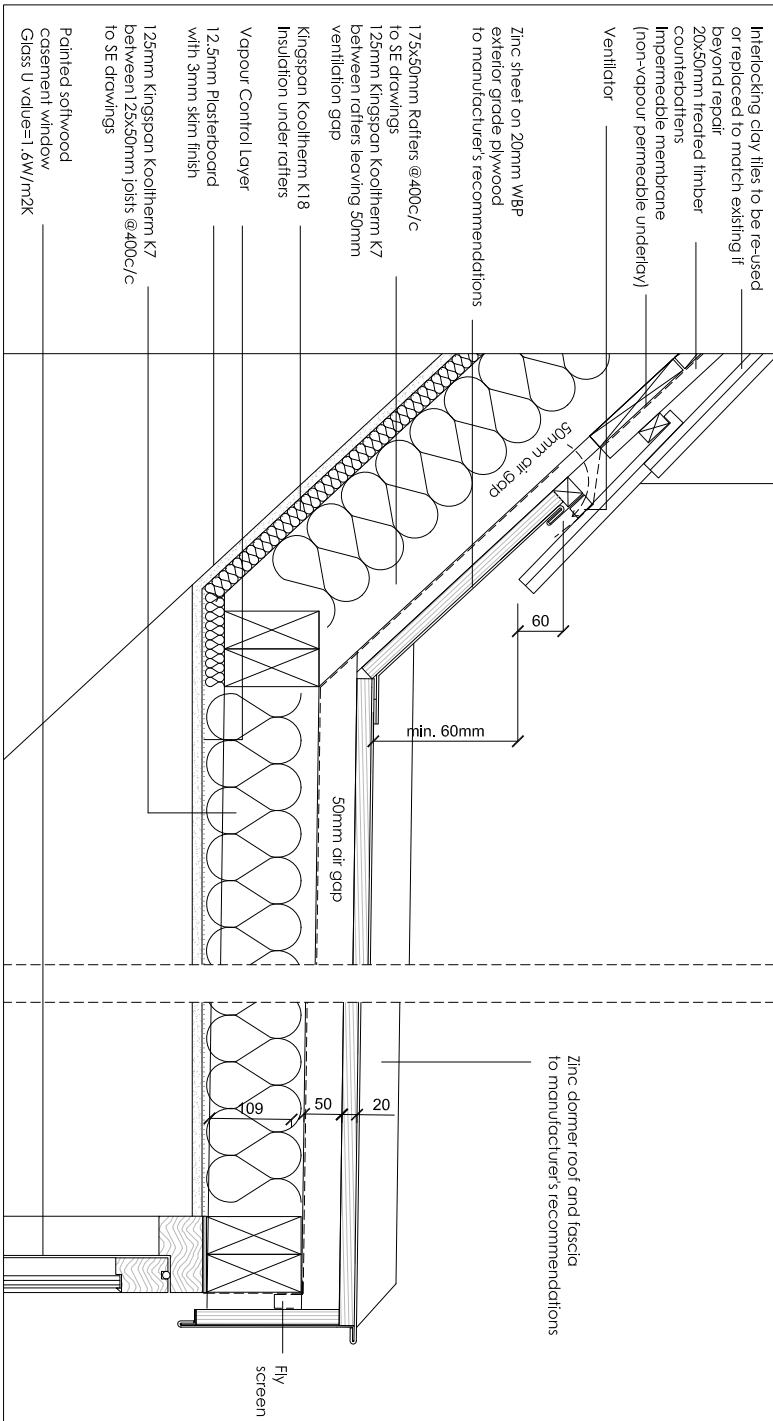
Status: DETAIL DESIGN Revision: A



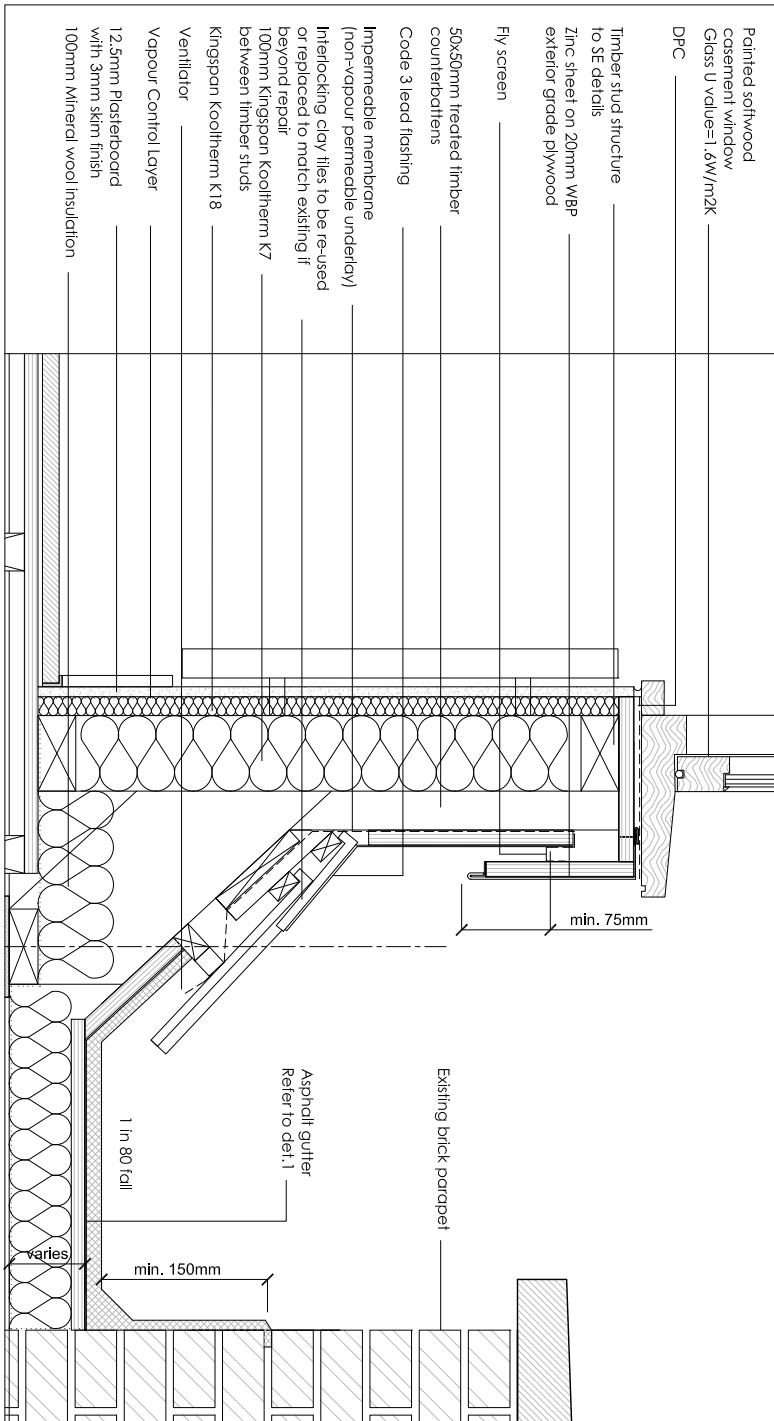
1 ROOF GUTTER DETAIL
WD20/ SCALE 1: 5@A1



2 ROOF GUTTER DETAIL
WD20/ SCALE 1: 5@A1



3 DORMER WINDOW ROOF DETAIL
WD20/ SCALE 1: 5@A1



4 DORMER WINDOW GUTTER DETAIL
WD20/ SCALE 1: 5@A1

Revision	Date	Reason	Initial
----------	------	--------	---------

/	19.05.16	DETAIL DESIGN	GM
A	07.06.16	DETAIL DESIGN	GM

Notes

- FOLLOW MANUFACTURERS INSTRUCTIONS/RECOMMENDATIONS FOR ALL INSTALLATIONS
- REFER TO RELATIVE CONSULTANT'S REPORTS FOR FURTHER DETAILS WHEN APPLICABLE
- TO BE READ IN CONJUNCTION WITH STRUCTURAL ENGINEER DRAWINGS
- TO BE READ IN CONJUNCTION WITH MECHANICAL ENGINEER DRAWINGS
- 1 HOUR FIRE RATING TO ALL STRUCTURAL ELEMENTS.
- 30 MIN. FIRE RATING TO ALL INTERNAL PARTITIONS AND FLOORS
- IF THE MATERIAL IS NOT PRESCRIBED, CONTRACTOR TO PROVIDE PROPOSALS AND SAMPLES FOR APPROVAL PRIOR TO ORDER
- CONTRACTOR TO COMPLY WITH OR BUILDING CONTROL REQUIREMENTS
- LEAD WORK INSTALLED TO LEAD ASSOCIATION GUIDELINES

Dimensions based on topographical survey by EPC commercial surveys Ltd
All dimensions must be checked on site and not scaled from this drawing
© Mark Fairhurst Ltd.

mark fairhurst ARCHITECTS

48A Union Street, London, SE1 1TD, T 020 7407 7070, E info@mark-fairhurst.co.uk

Project: Cock Tavern, 23 Phoenix Road, London NW1 1HB

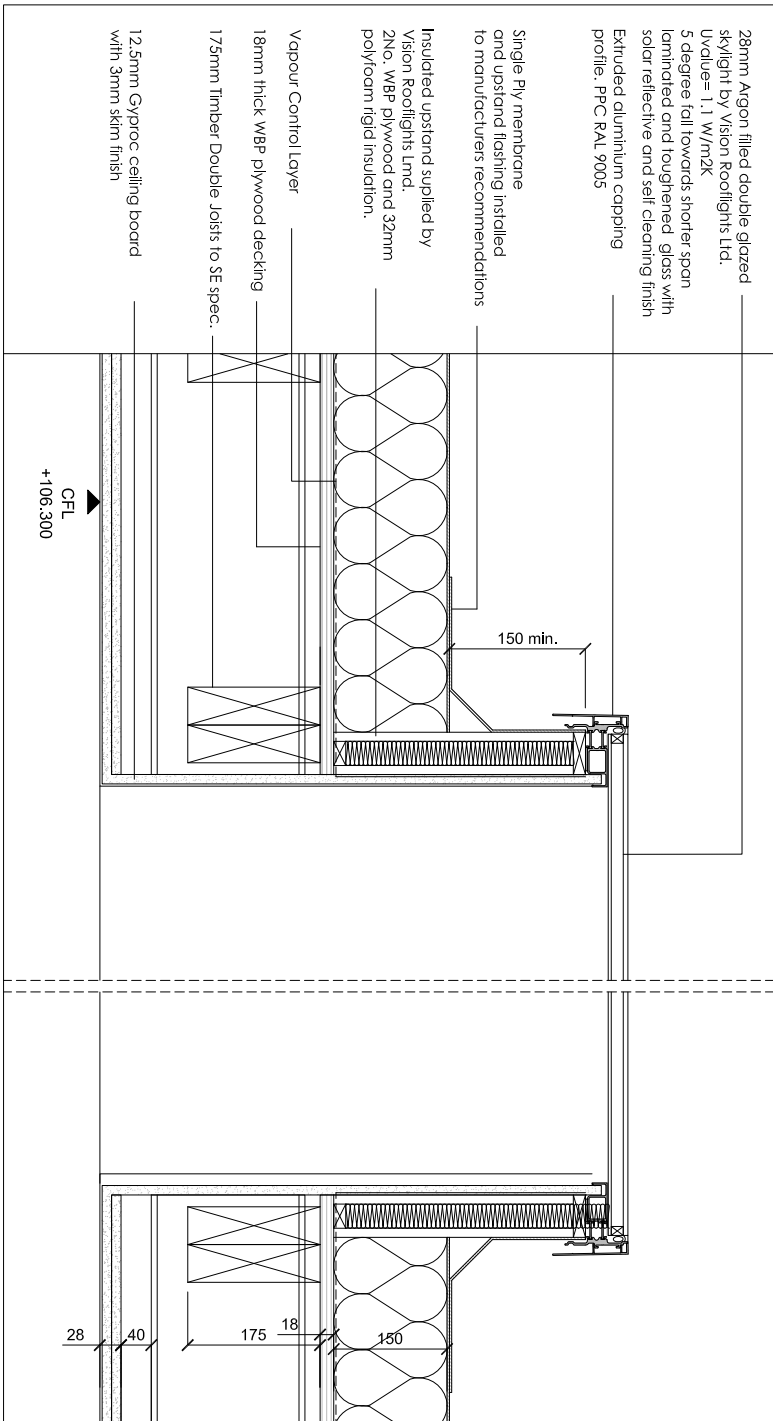
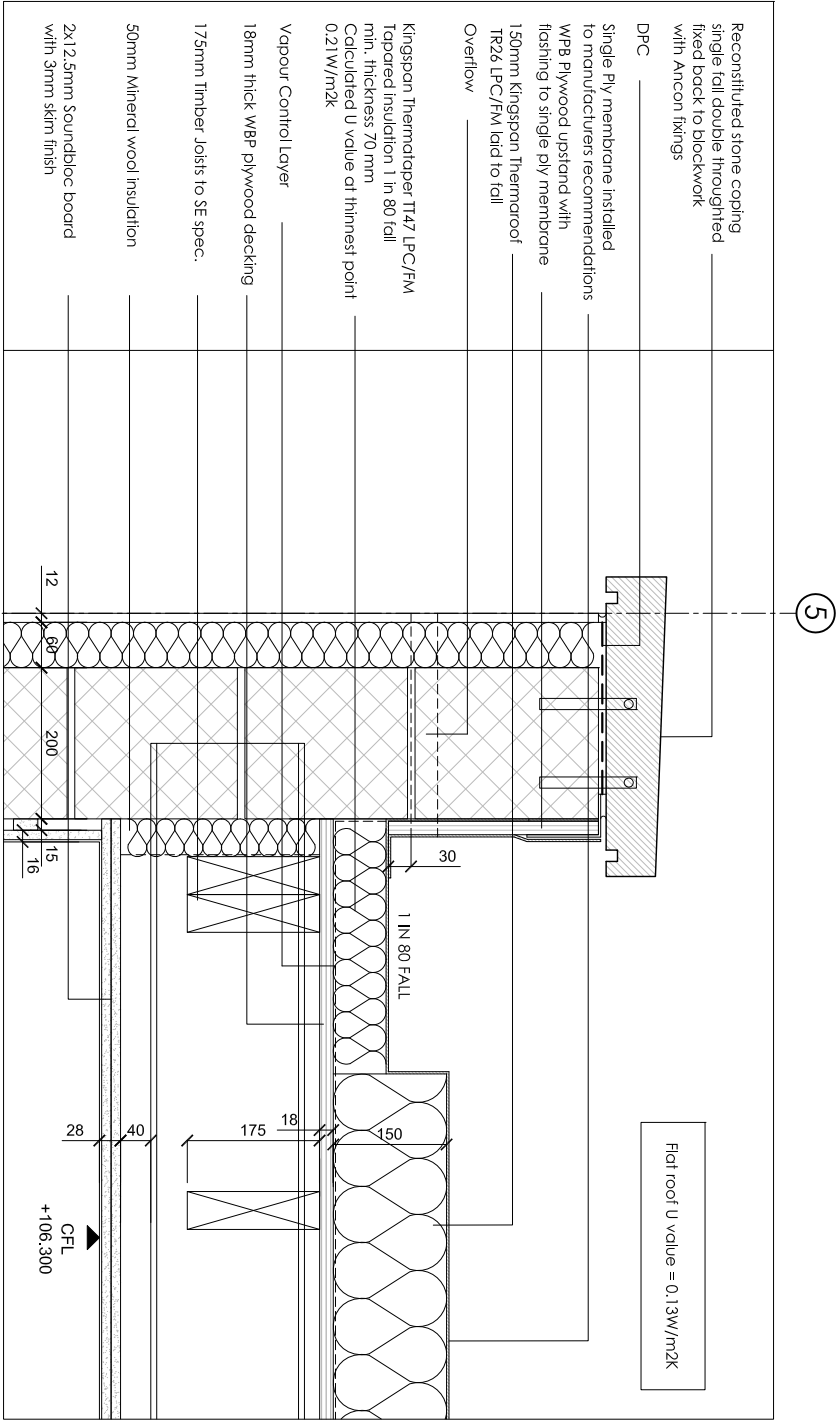
Client: Flamestrike Ltd.

Drawing title: Proposed Roof Details to existing roof

Scale: 1:10@A3, 1:5@A1 Date: 07.06.16 Drawn by: GM

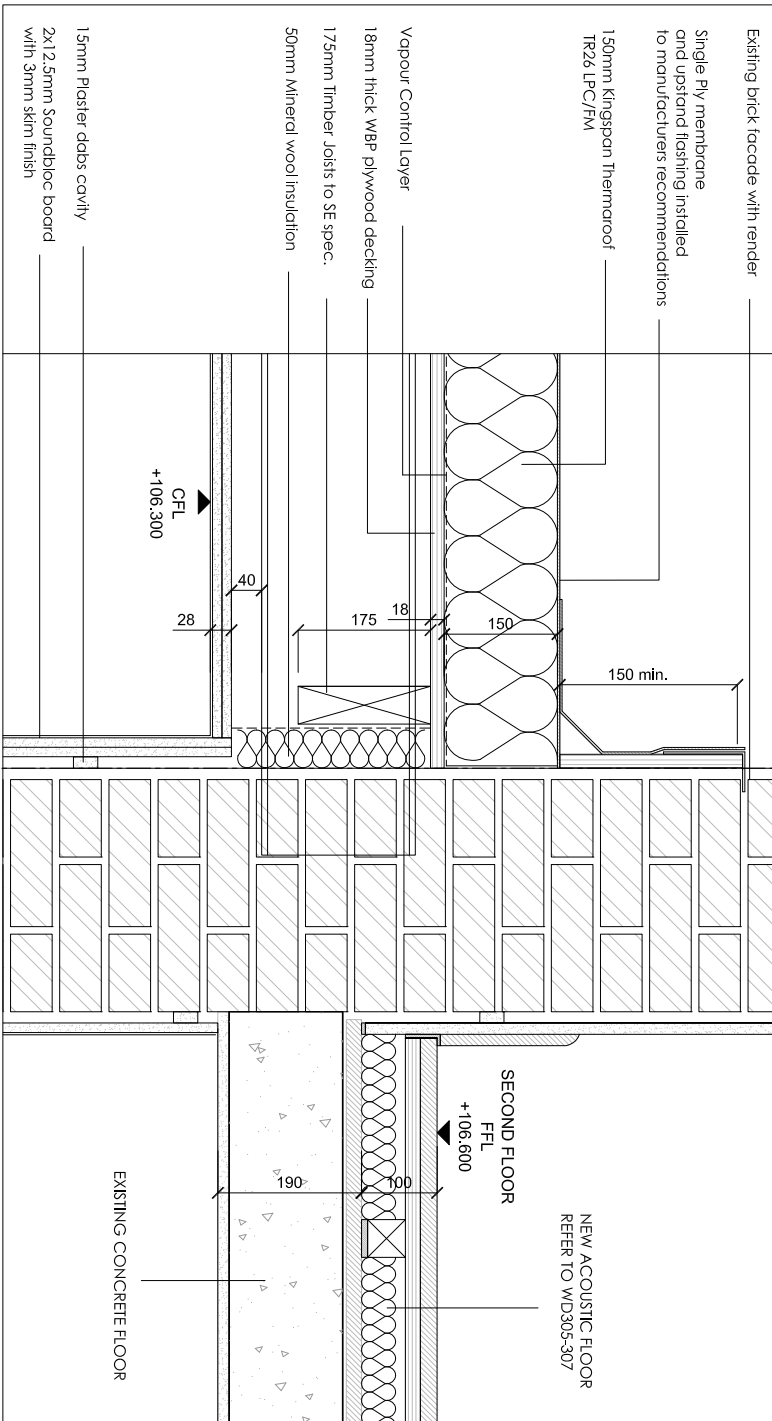
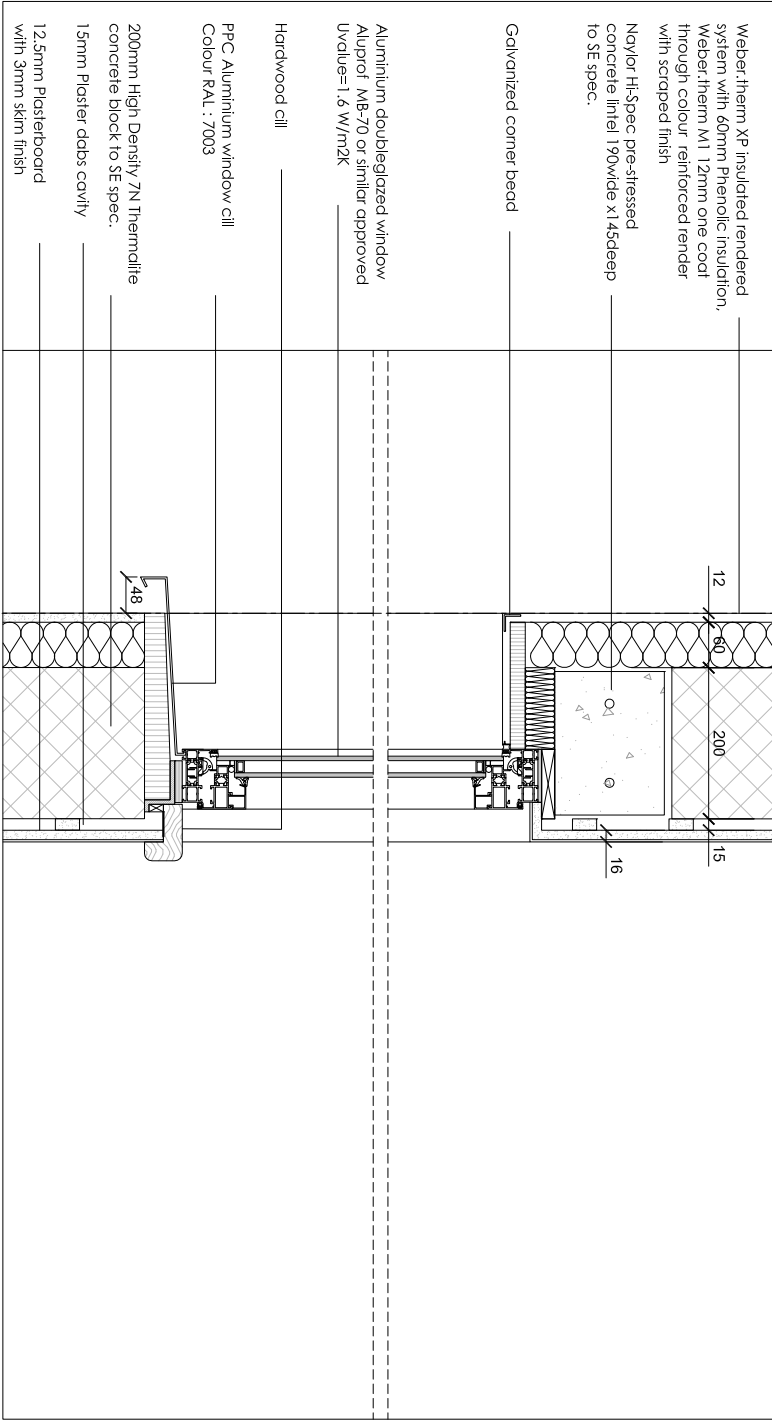
Project number: 1250 Drawing number: WD201

Status: DETAIL DESIGN Revision: A



1 FLAT ROOF GUTTER AND PARAPET DETAIL
WD202 SCALE 1: 5@A1

3 SKYLIGHT DETAIL
WD202 SCALE 1: 5@A1



2 NEW EXTENSION FACADE AND WINDOW DETAIL
WD202 SCALE 1: 5@A1

4 NEW EXTENSION ROOF INTERFACE WITH EXISTING REAR FACADE
WD202 SCALE 1: 5@A1

Revision	Date	Reason	Initial
/	19.05.16	DETAIL DESIGN	GM
A	07.06.16	DETAIL DESIGN	GM

Notes

- FOLLOW MANUFACTURERS INSTRUCTIONS/RECOMMENDATIONS FOR ALL INSTALLATIONS
- REFER TO RELATIVE CONSULTANTS REPORTS FOR FURTHER DETAILS WHEN APPLICABLE
- TO BE READ IN CONJUNCTION WITH STRUCTURAL ENGINEER DRAWINGS
- TO BE READ IN CONJUNCTION WITH MECHANICAL ENGINEER DRAWINGS
- 1 HOUR FIRE RATING TO ALL STRUCTURAL ELEMENTS
- 30 MIN. FIRE RATING TO ALL INTERNAL PARTITIONS AND FLOORS
- IF THE MATERIAL IS NOT PRESCRIBED, CONTRACTOR TO PROVIDE PROPOSALS AND SAMPLES FOR APPROVAL PRIOR TO ORDER
- CONTRACTOR TO COMPLY WITH OR BUILDING CONTROL REQUIREMENTS

Dimensions based on topographical survey by EPC commercial surveys Ltd
All dimensions must be checked on site and not scaled from this drawing
© Mark Fairhurst Ltd.

mark fairhurst architects

48A Union Street, London, SE1 1TD, T 020 7407 7070, E info@mark-fairhurst.co.uk
Project: Cock Tavern, 23 Phoenix Road, London NW1 1HB

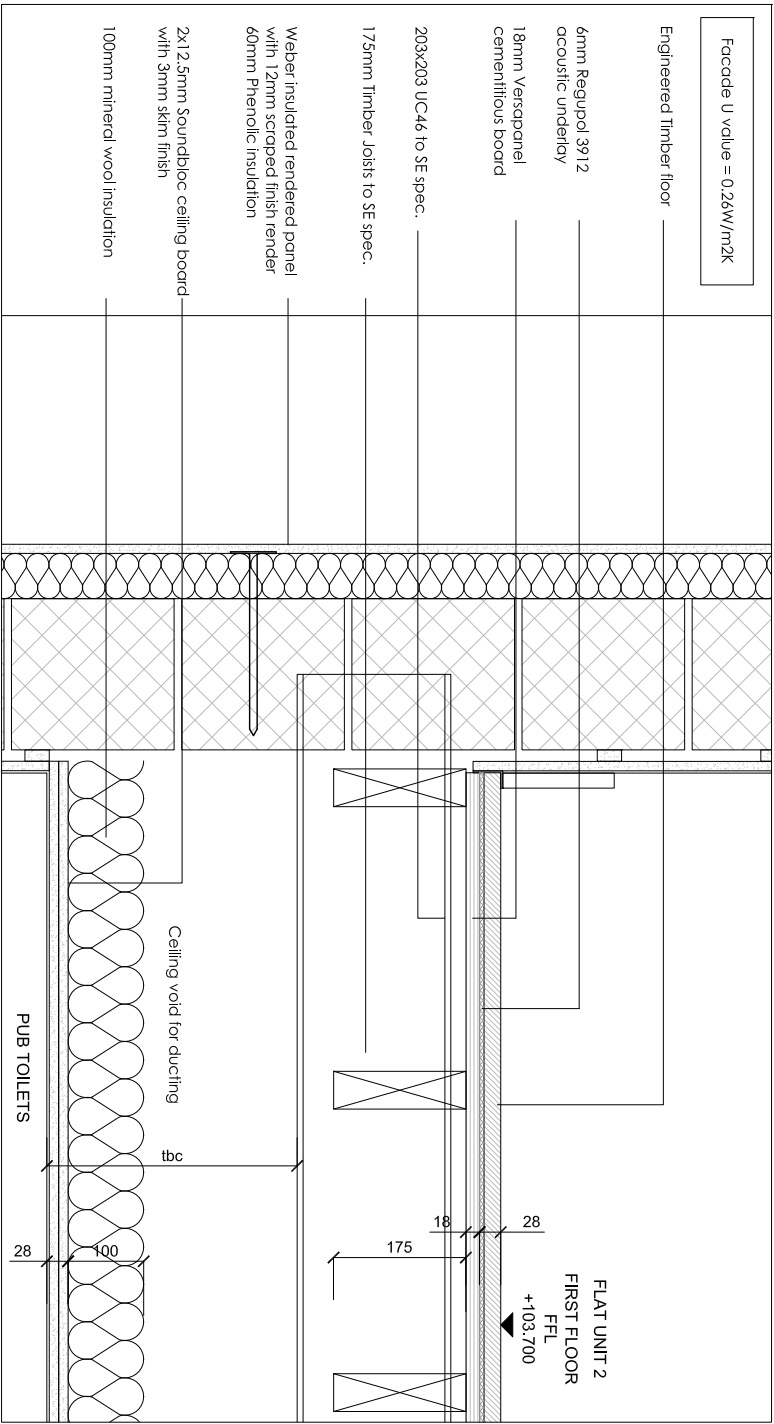
Client: Flameslike Ltd.

Drawing title: New Rear Extension Details 1

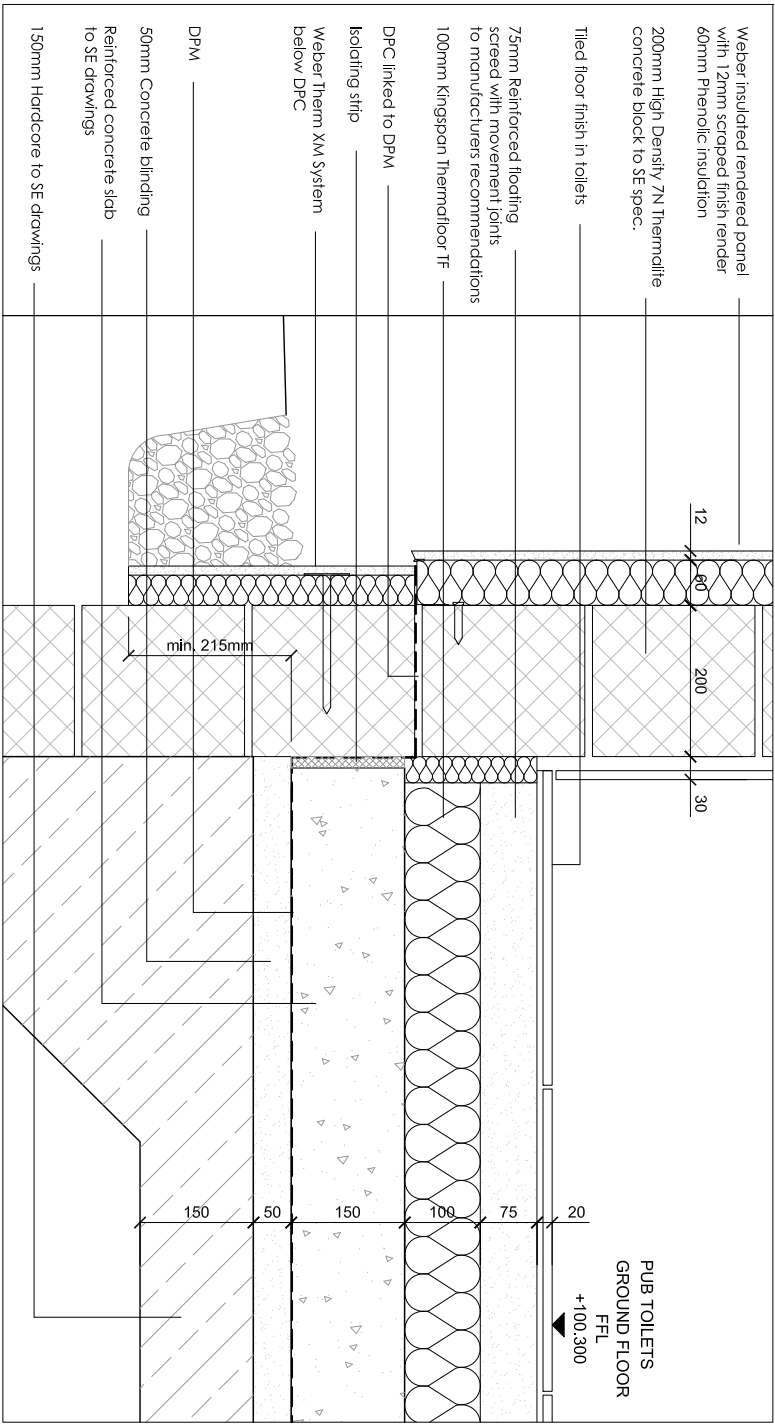
Scale: 1:10@A3, 1:5@A1 Date: 07.06.16 Drawn by: GM

Project number: 1250 Drawing number: WD202

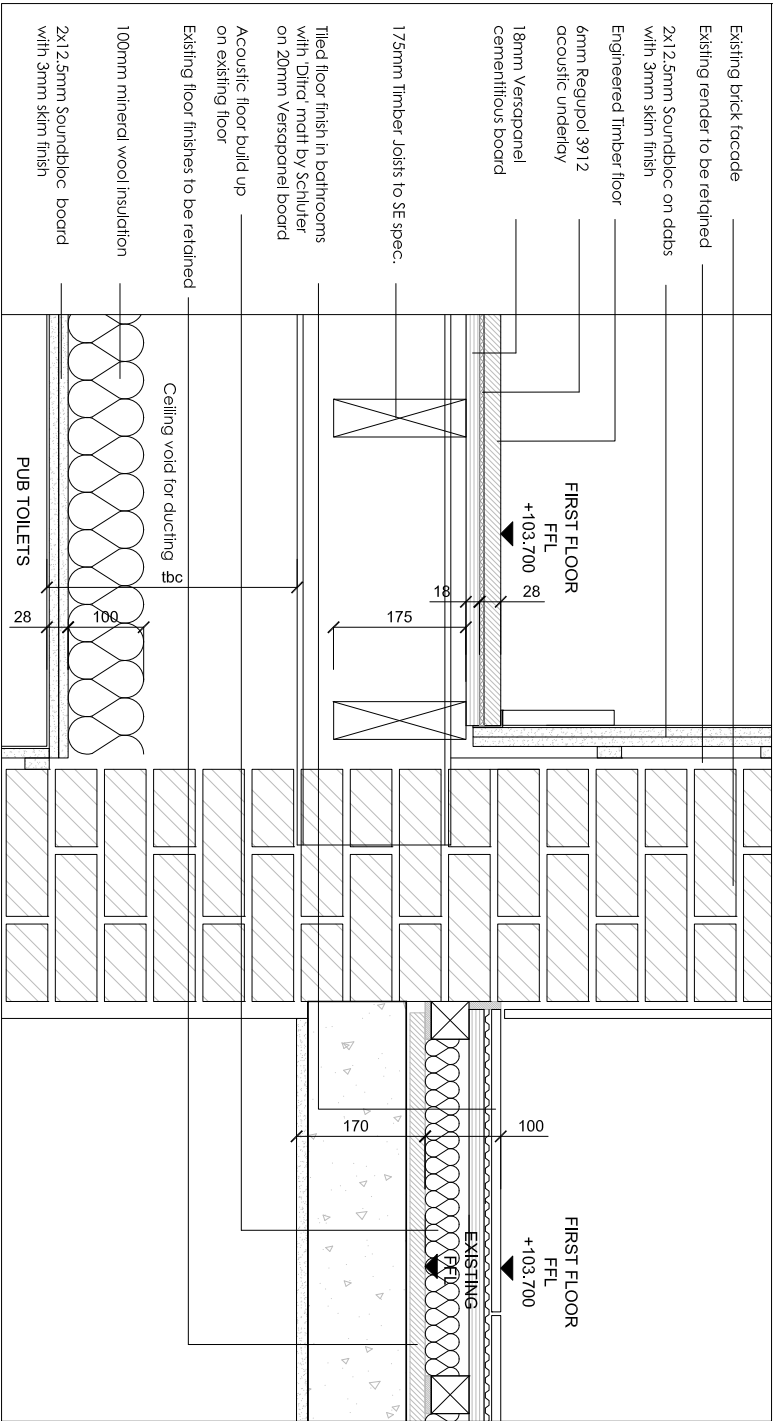
Status: DETAILED DESIGN Revision: A



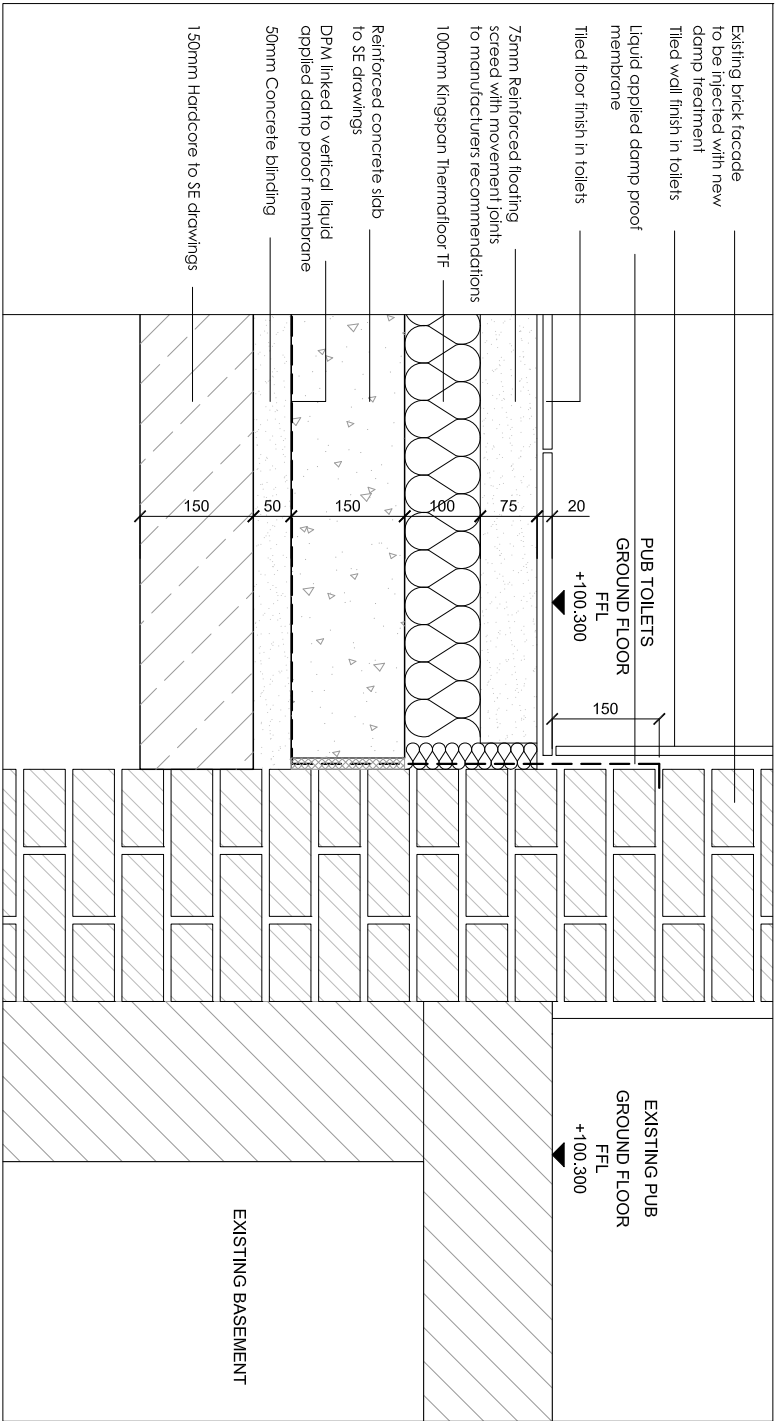
1 FIRST FLOOR AND FACADE DETAIL
WD203 SCALE 1: 5@A1



2 GROUND FLOOR SLAB AND FACADE DETAIL
WD203 SCALE 1: 5@A1



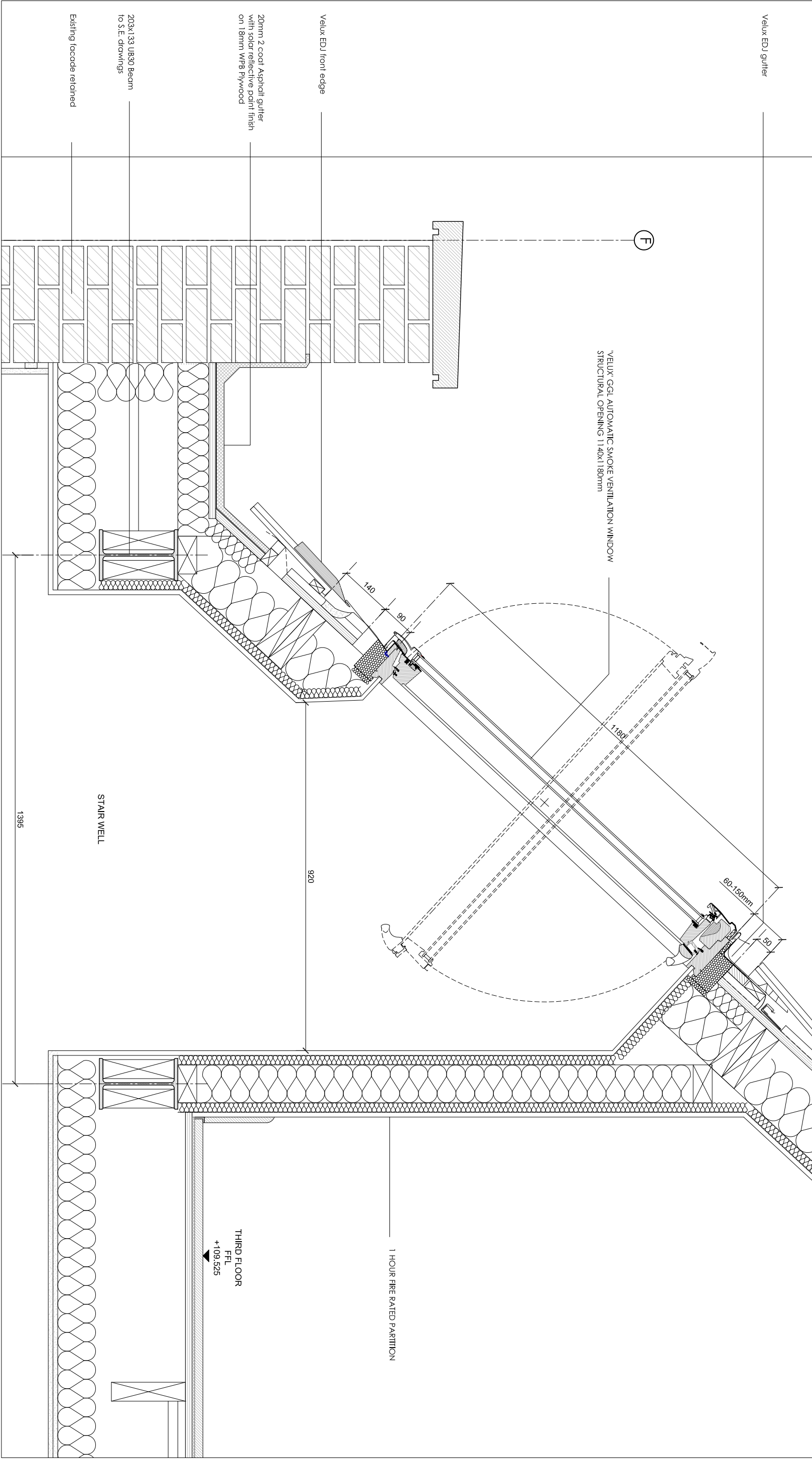
3 FIRST FLOOR AND EXISTING REAR WALL DETAIL
WD203 SCALE 1: 5@A1



4 GROUND FLOOR SLAB AND EXISTING REAR WALL DETAIL
WD203 SCALE 1: 5@A1

Revision	Date	Reason	Initial	Notes
/	19.05.16	DETAIL DESIGN	GM	
A	07.06.16	DETAIL DESIGN	GM	- FOLLOW MANUFACTURERS INSTRUCTIONS/RECOMMENDATIONS FOR ALL INSTALLATIONS
B	14.06.16	DETAIL DESIGN	GM	- REFER TO RELATIVE CONSULTANT'S REPORTS FOR FURTHER DETAILS WHEN APPLICABLE
				- TO BE READ IN CONJUNCTION WITH STRUCTURAL ENGINEER DRAWINGS
				- TO BE READ IN CONJUNCTION WITH MECHANICAL ENGINEER DRAWINGS
				- 1 HOUR FIRE RATING TO ALL STRUCTURAL ELEMENTS.
				- 1 HOUR FIRE RATING TO ALL INTERNAL PARTITIONS BETWEEN UNITS
				- 30 MIN. FIRE RATING TO ALL INTERNAL PARTITIONS AND FLOORS
				- IF THE MATERIAL IS NOT PRESCRIBED, CONTRACTOR TO PROVIDE PROPOSALS AND SAMPLES FOR APPROVAL PRIOR TO ORDER
				- CONTRACTOR TO COMPLY WITH OR BUILDING CONTROL REQUIREMENTS

Dimensions based on topographical survey by EPC commercial surveys Ltd
All dimensions must be checked on site and not scaled from this drawing
© Mark Fairhurst Ltd.



1 AUTOMATIC SMOKE VENT DETAILED SECTION
WD204 SCALE 1: 5@A1

Revision	Date	Reason	Initial	Notes
/	07.06.16	DETAIL DESIGN	GM	<ul style="list-style-type: none">- FOLLOW MANUFACTURERS INSTRUCTIONS/RECOMMENDATIONS FOR ALL INSTALLATIONS- REFER TO RELATIVE CONSULTANTS REPORTS FOR FURTHER DETAILS WHEN APPLICABLE- TO BE READ IN CONJUNCTION WITH STRUCTURAL ENGINEER DRAWINGS- TO BE READ IN CONJUNCTION WITH MECHANICAL ENGINEER DRAWINGS- 1 HOUR FIRE RATING TO ALL STRUCTURAL ELEMENTS.- 30 MIN. FIRE RATING TO ALL INTERNAL PARTITIONS AND FLOORS- IF THE MATERIAL IS NOT PRESCRIBED, CONTRACTOR TO PROVIDE PROPOSALS AND SAMPLES FOR APPROVAL PRIOR TO ORDER- CONTRACTOR TO COMPLY WITH OR BUILDING CONTROL REQUIREMENTS- REFER TO VELUX MANUFACTURERS REQUIREMENTS FOR WINDOW INSTALLATION
<div><div><div>mark fairhurst</div><div>ARCHITECTS</div></div><div>48A Union Street, London, SE1 1TD, T 020 7407 7070, E info@mark-fairhurst.co.uk</div><div>Project: Cock Tavern, 23 Phoenix Road, London NW1 1HB</div><div>Client: Flamesrike Ltd.</div><div>Drawing title: Proposed AOV Details to existing roof</div><div>Scale: 1:10@A3, 1:5@A1</div><div>Project number: 1250</div><div>Status: DETAIL DESIGN</div></div> <div><div>Date: 07.06.16</div><div>Drawn by: GM</div><div>Drawing number: WD204</div><div>Revision: /</div></div>				

Notes

 EXISTING PARTITION RETAINED

LEGEND

- 35mm THICK HARDWOOD TREAD STAINED TO APPROVED COLOUR SAMPLE.
- 20mm THICK HARDWOOD RISER STAINED TO APPROVED COLOUR SAMPLE.
- 12mm THICK PAINTED STEEL STRINGER BUILT INTO WALL FINISHES TO SE SPEC.
- 40mm DIAMETER OAK HANDRAIL BOLTED TO WALL WITH COUNTERSUNK FININGS.
- STUD PARTITION WITH 12.5mm SOUNDBLOC BOARD FINISH.
- 12mm TOUGHENED GLASS BALUSTRADE.
- 12mm STEEL PLATES TO STRUCTURAL ENGINEER SPEC.
- 100mm MINERAL WOOL INSULATION TO 'KP ACOUSTICS' SPEC.
- EXISTING CONCRETE FLOOR

- THE SUBCONTRACTOR IS TO COMPLETE THE DESIGN OF THE STAIR AND BALUSTRADE TO MEET STRUCTURAL AND SAFETY REQUIREMENTS BS 5395 TYPE OF ACTIVITY/CATEGORY TO BS 6399-1 (domestic and residential activities)
- BEFORE STARTING WORK ON THE STAIR AND BALUSTRADE TAKE SITE DIMENSIONS, RECORD ON SHOP DRAWINGS AND USE TO ENSURE ACCURATE FABRICATION
- STRINGER CONNECTION DETAILS TO STRUCTURAL ENGINEER'S SPEC.
- FOLLOW MANUFACTURERS RECOMMENDATIONS FOR ALL INSTALLATIONS
- REFER TO RELATIVE CONSULTANTS REPORTS FOR FURTHER DETAILS
- TO BE READ IN CONJUNCTION WITH STRUCTURAL ENGINEER DRAWINGS
- TO BE READ IN CONJUNCTION WITH MECHANICAL ENGINEER DRAWINGS
- 1 HOUR FIRE RATING TO ALL STRUCTURAL ELEMENTS
- 1 HOUR FIRE RATING TO ALL INTERNAL PARTITIONS BETWEEN UNITS
- 30 MIN. FIRE RATING TO ALL INTERNAL PARTITIONS
- IF THE MATERIAL IS NOT PRESCRIBED, CONTRACTOR TO PROVIDE PROPOSALS AND SAMPLES FOR APPROVAL PRIOR TO ORDER
- CONTRACTOR TO COMPLY WITH OR BUILDING CONTROL REQUIREMENTS
- REFER TO ACOUSTIC REPORT AND TO INTERNAL DETAIL SERIES WD305-308 FOR PARTITIONS BUILD UP

Revision	Date	Reason	Initial
/	19.05.16	DETAIL DESIGN	GM

Dimensions based on topological survey by EPC commercial surveys Ltd
All dimensions must be checked on site and not scaled from this drawing
© Mark Fairhurst Ltd.

mark fairhurst ARCHITECTS

48A Union Street, London, SE1 1TD. T 020 7407 7070. E info@mark-fairhurst.co.uk

Project: Cock Tavern, 23 Phoenix Road, London NW1 1HB

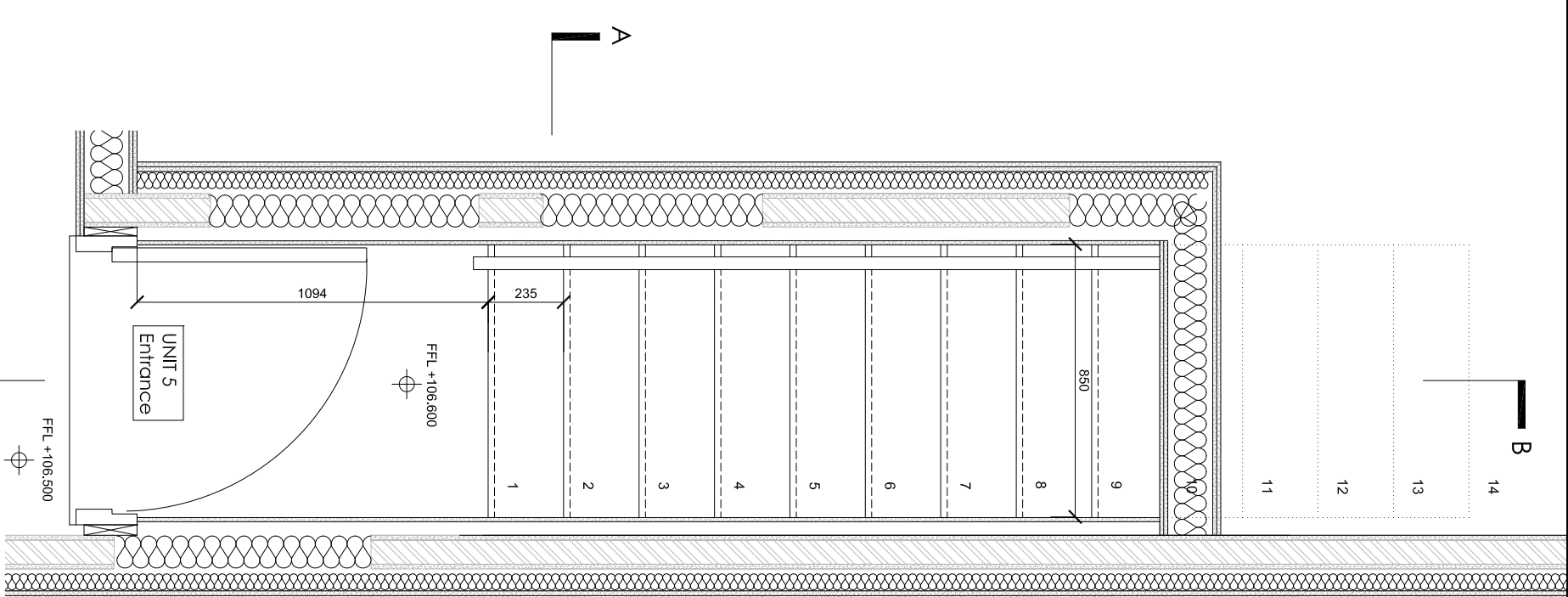
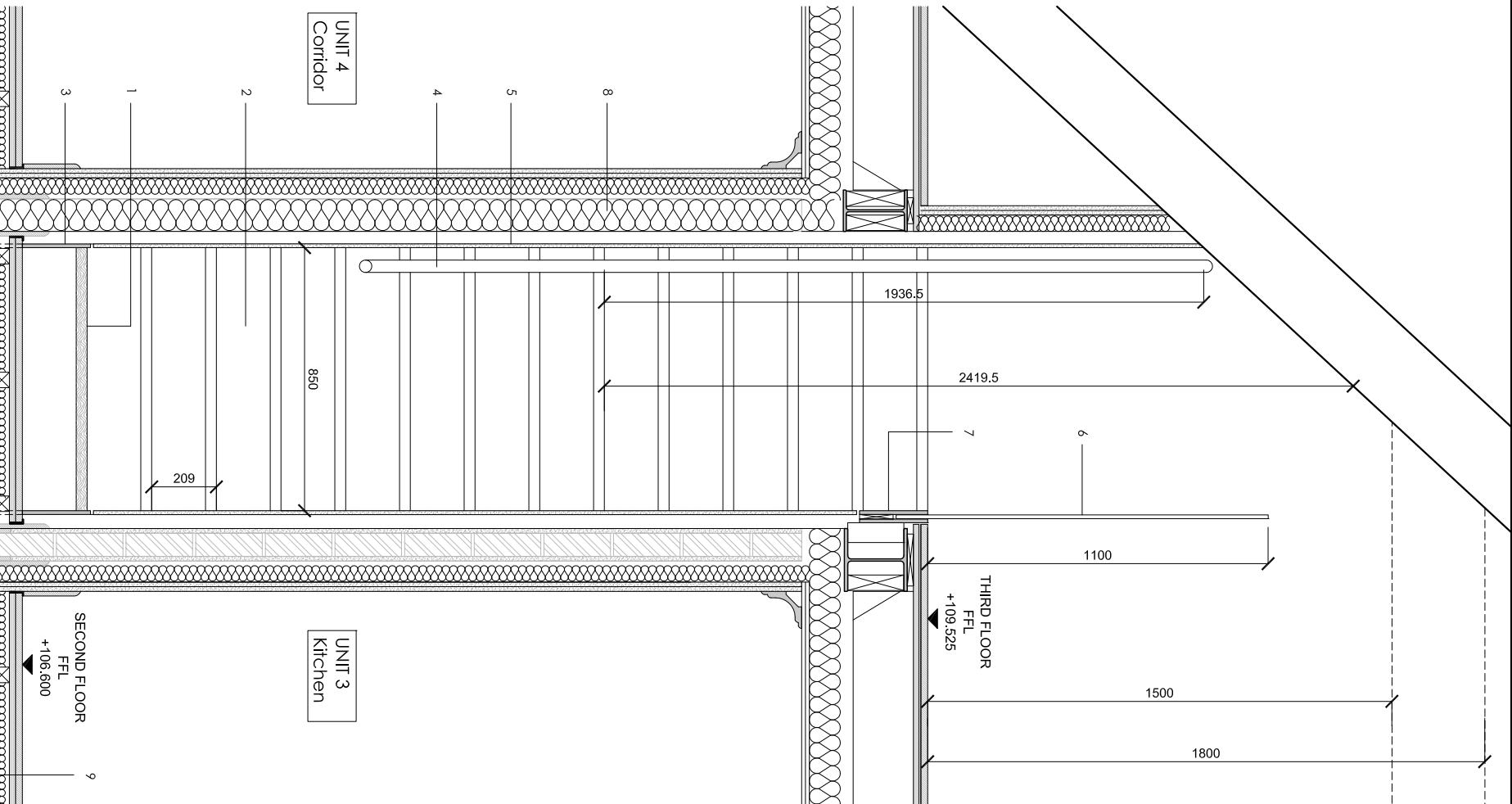
Client: Flamesitke Ltd.

Drawing title: Proposed Stair Layout Unit 5, Plan and Section A

Scale: 1:40@A3, 1:20@A1 Date: 19.05.16 Drawn by: GM

Project number: 1250 Drawing number: WD300

Status: DETAIL DESIGN Revision: /



1 UNIT 5 STAIR PLAN LAYOUT

300

2 UNIT 5 STAIR SECTION AA

300

Notes

LEGEND

- 35mm THICK HARDWOOD TREAD STAINED TO APPROVED COLOUR SAMPLE.
- 20mm THICK HARDWOOD RISER STAINED TO APPROVED COLOUR SAMPLE.
- 12mm THICK PAINTED STEEL STRINGER BUILT INTO WALL FINISHES TO SE SPEC.
- 40mm DIAMETRE TIMBER HANDRAIL BOLTED TO WALL WITH COUNTERSUNK FININGS.
- 100mm MINERAL WOOL INSULATION TO 'KP ACOUSTICS' SPEC.
- EXISTING CONCRETE FLOOR

- THE SUBCONTRACTOR IS TO COMPLETE THE DESIGN OF THE STAIR AND BALUSTRADE TO MEET STRUCTURAL AND SAFETY REQUIREMENTS BS 5395 TYPE OF ACTIVITY/CATEGORY TO BS 6399-1 (Domestic and residential activities)
- BEFORE STARTING WORK ON THE STAIR AND BALUSTRADE TAKE SITE DIMENSIONS, RECORD ON SHOP DRAWINGS AND USE TO ENSURE ACCURATE FABRICATION
- STRINGER CONNECTION DETAILS TO STRUCTURAL ENGINEER'S SPEC.
- FOLLOW MANUFACTURERS RECOMMENDATIONS FOR ALL INSTALLATIONS
- REFER TO RELATIVE CONSULTANTS REPORTS FOR FURTHER DETAILS
- TO BE READ IN CONJUNCTION WITH STRUCTURAL ENGINEER DRAWINGS
- TO BE READ IN CONJUNCTION WITH MECHANICAL ENGINEER DRAWINGS
- 1 HOUR FIRE RATING TO ALL STRUCTURAL ELEMENTS
- 1 HOUR FIRE RATING TO ALL INTERNAL PARTITIONS
- 30 MIN. FIRE RATING TO ALL INTERNAL PARTITIONS
- IF THE MATERIAL IS NOT PRESCRIBED CONTRACTOR TO PROVIDE PROPOSALS AND SAMPLES FOR APPROVAL PRIOR TO ORDER
- CONTRACTOR TO COMPLY WITH OR BUILDING CONTROL REQUIREMENTS
- REFER TO ACOUSTIC REPORT AND TO INTERNAL DETAIL SERIES WD305-308 FOR PARTITIONS BUILD UP

Revision	Date	Reason	Initial
/	19.05.16	DETAIL DESIGN	GM

Dimensions based on topological survey by EPC commercial surveys Ltd
All dimensions must be checked on site and not scaled from this drawing
© Mark Fairhurst Ltd.

mark fairhurst ARCHITECTS

48A Union Street, London, SE1 1TD, T 020 7407 7070, E info@mark-fairhurst.co.uk

Project: Cock Tavern, 23 Phoenix Road, London NW1 1HB

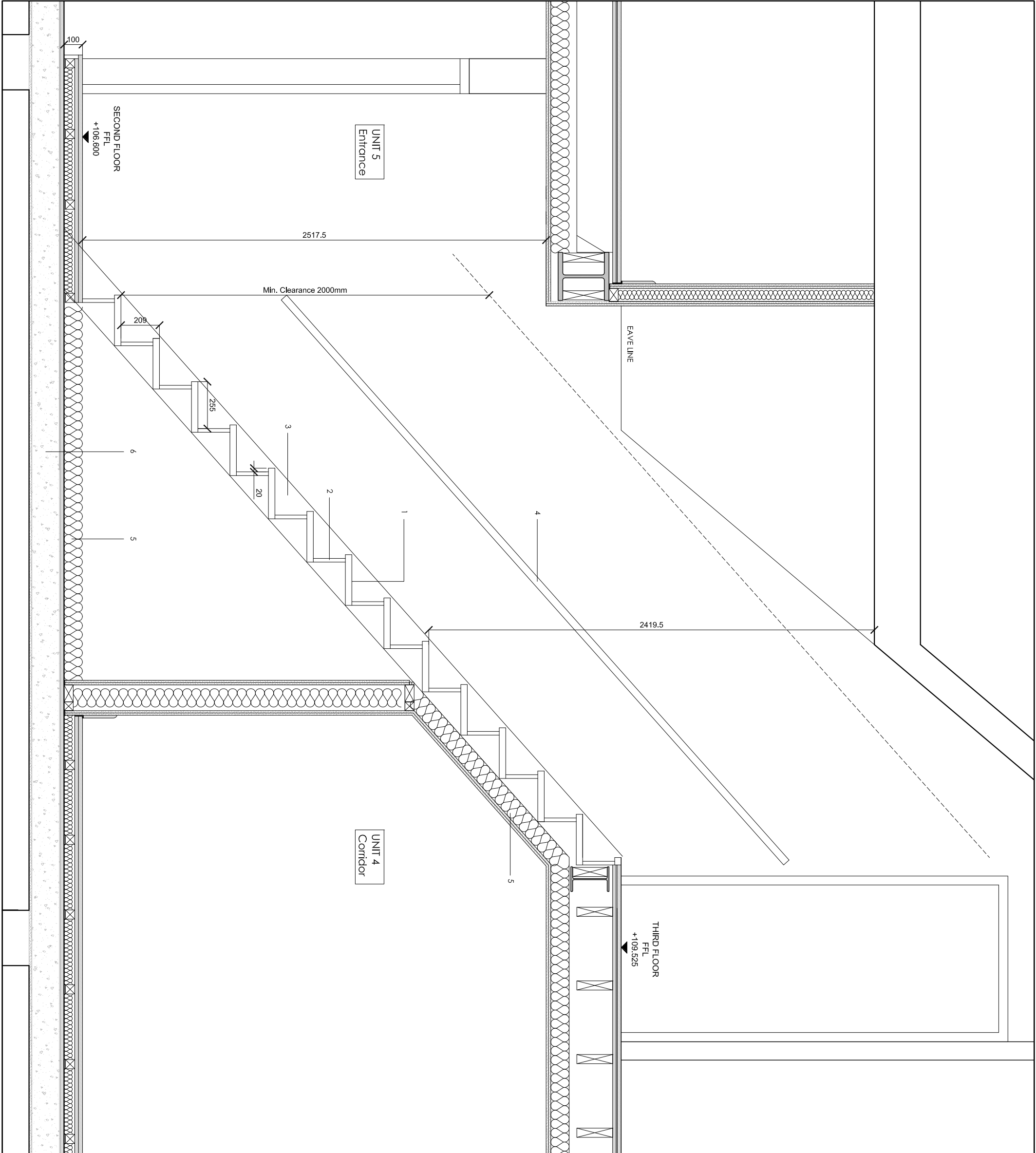
Client: Flametstike Ltd.

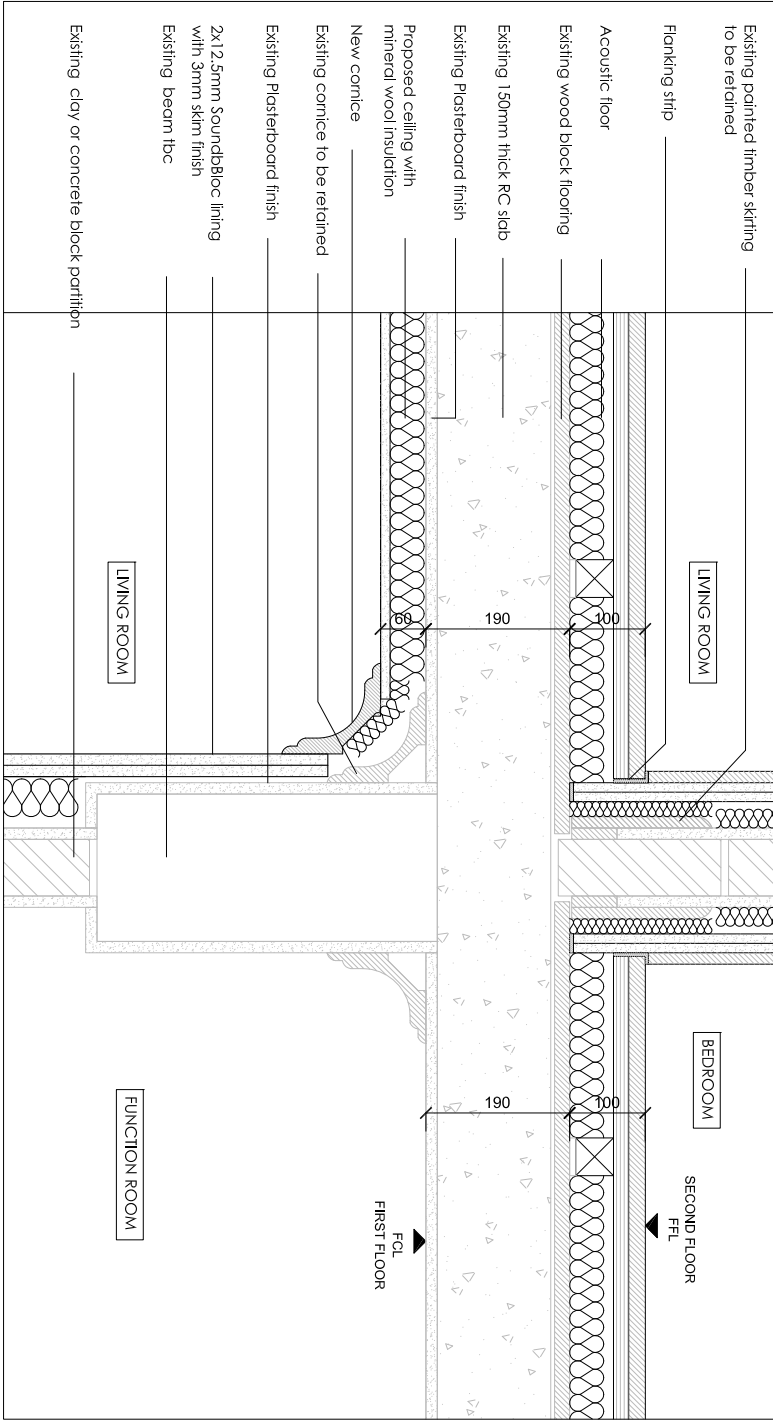
Drawing title: Proposed Stair Layout Unit 5, Section B

Scale: 1:40@A3, 1:20@A1 Date: 19.05.16 Drawn by: GM

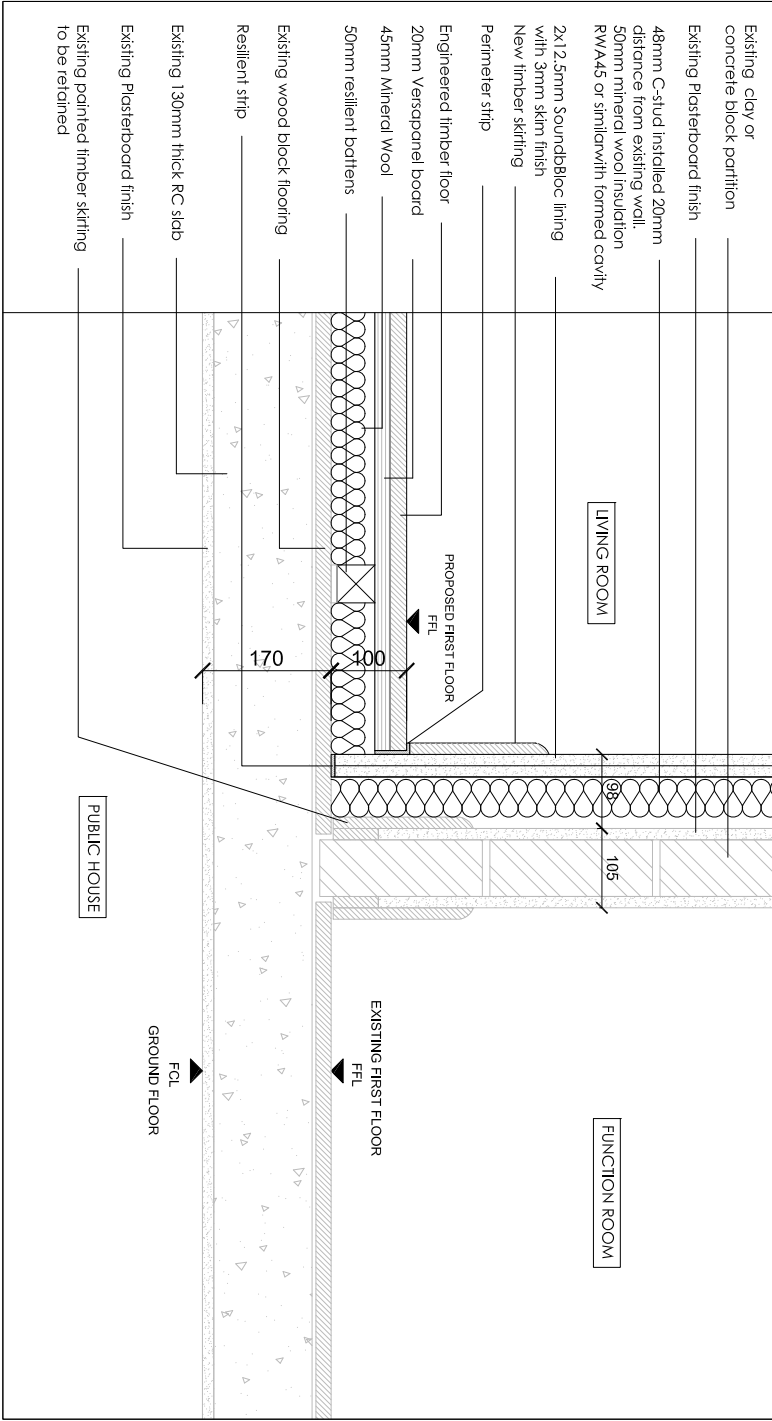
Project number: 1250 Drawing number: WD301

Status: DETAIL DESIGN Revision: /

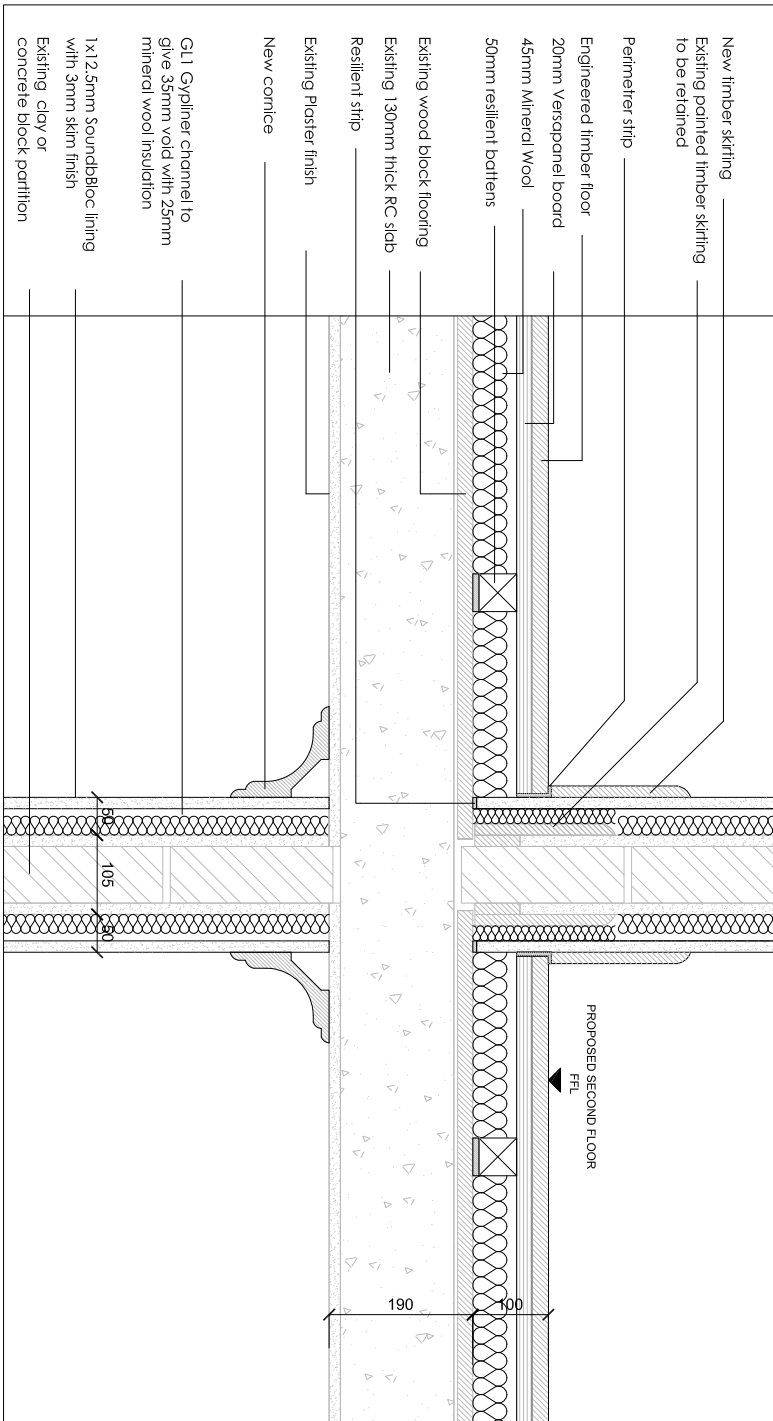




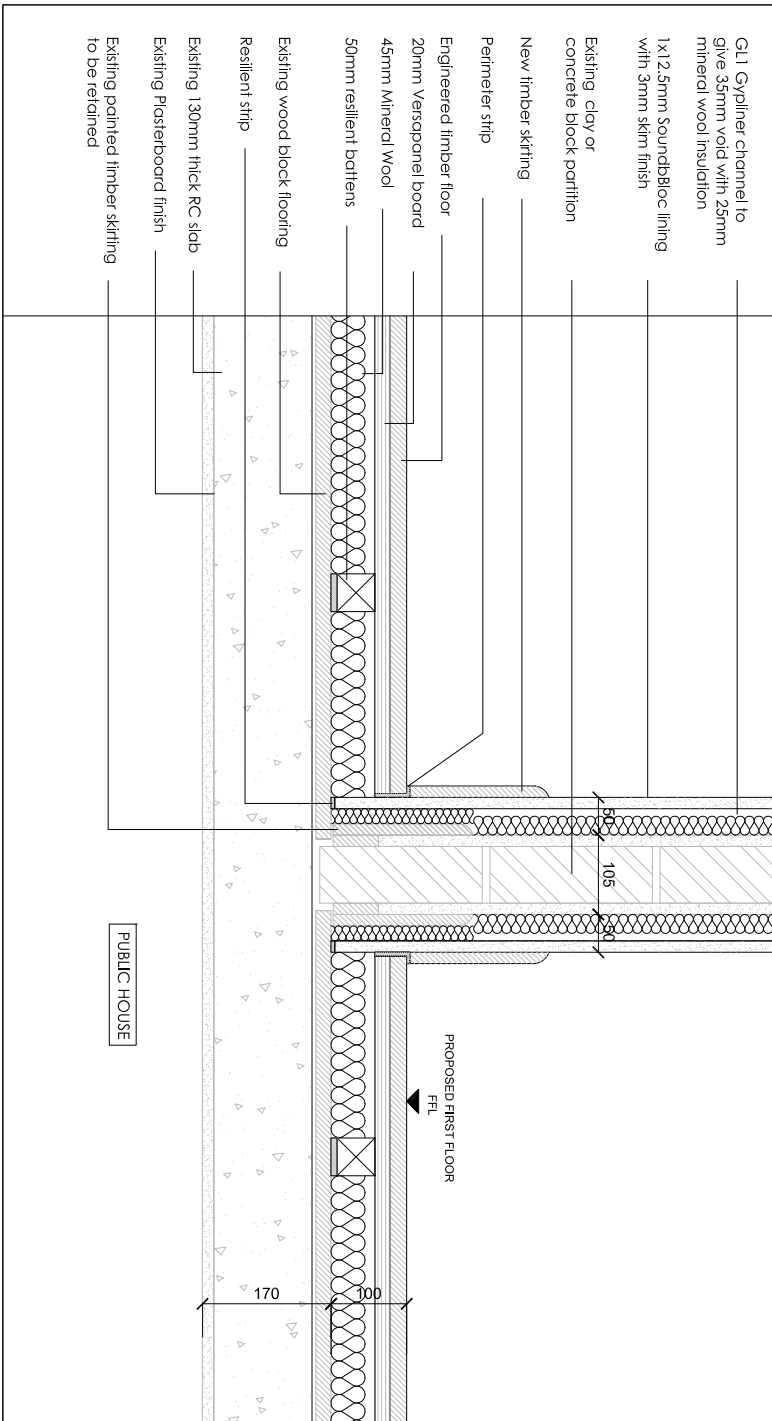
1 SECOND FLOOR PARTITIONS AND FLOOR, ACOUSTIC UPGRADE.
WD305 SCALE 1: 10@A1



2 FIRST FLOOR PARTITIONS AND FLOOR, ACOUSTIC UPGRADE.
WD305 SCALE 1: 10@A1



3 SECOND FLOOR PARTITIONS AND FLOOR, ACOUSTIC UPGRADE.
WD305 SCALE 1: 10@A1



4 FIRST FLOOR PARTITIONS AND FLOOR, ACOUSTIC UPGRADE.
WD305 SCALE 1: 10@A1

Revision / 07.06.16 DETAIL DESIGN

A 14.06.16 DETAIL DESIGN

Initial GM

Notes

- FOLLOW MANUFACTURERS INSTRUCTIONS/RECOMMENDATIONS FOR ALL INSTALLATIONS
- REFER TO RELATIVE CONSULTANTS REPORTS FOR FURTHER DETAILS WHEN APPLICABLE
- TO BE READ IN CONJUNCTION WITH ACOUSTIC REPORT
- TO BE READ IN CONJUNCTION WITH STRUCTURAL ENGINEER DRAWINGS
- TO BE READ IN CONJUNCTION WITH MECHANICAL ENGINEER DRAWINGS
- 1 HOUR FIRE RATING TO ALL STRUCTURAL ELEMENTS.
- 1 HOUR FIRE RATING TO ALL INTERNAL PARTITIONS
- 30 MIN. FIRE RATING TO ALL INTERNAL PARTITIONS
- IF THE MATERIAL IS NOT PRESCRIBED, CONTRACTOR TO PROVIDE PROPOSALS AND SAMPLES FOR APPROVAL PRIOR TO ORDER
- CONTRACTOR TO COMPLY WITH OR BUILD AROUND EXISTING ARCHITRAVES, SKIRTINGS AND COVINGS
- NEW PLASTERBOARD PARTITIONS TO BE BUILT AROUND EXISTING ARCHITRAVES, SKIRTINGS AND COVINGS
- REFER TO GAS WD112, 114 & 116 FOR DETAIL LOCATIONS

mark fairhurst ARCHITECTS

48A Union Street, London, SE1 1TD, T 020 7407 7070, E info@mark-fairhurst.co.uk

Project: Cock Tavern, 23 Phoenix Road, London NW1 1HB

Client: Flamesrike Ltd.

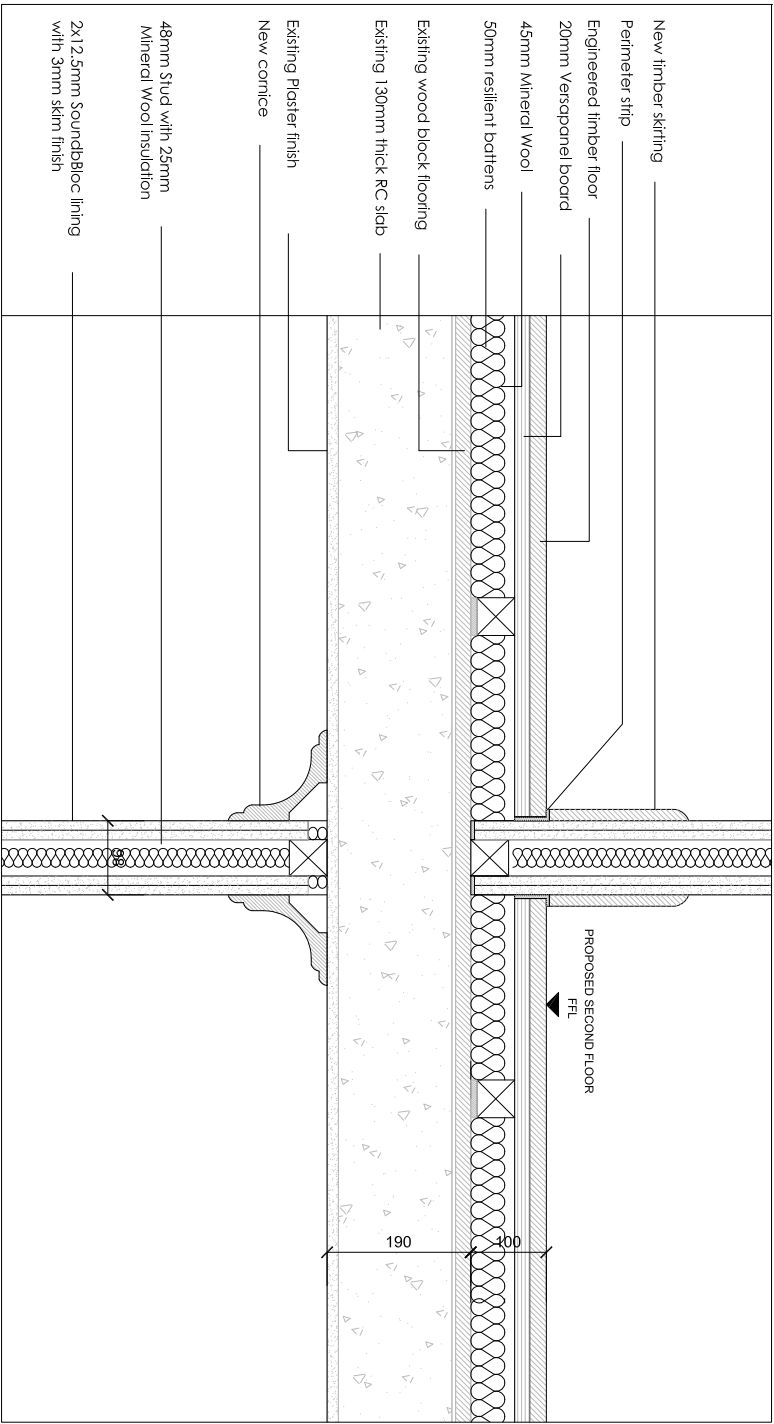
Drawing title: Upgrade to Existing Internal wall & Floor Details

Scale: 1:20@A3, 1:10@A1 Date: Drawn by: GM

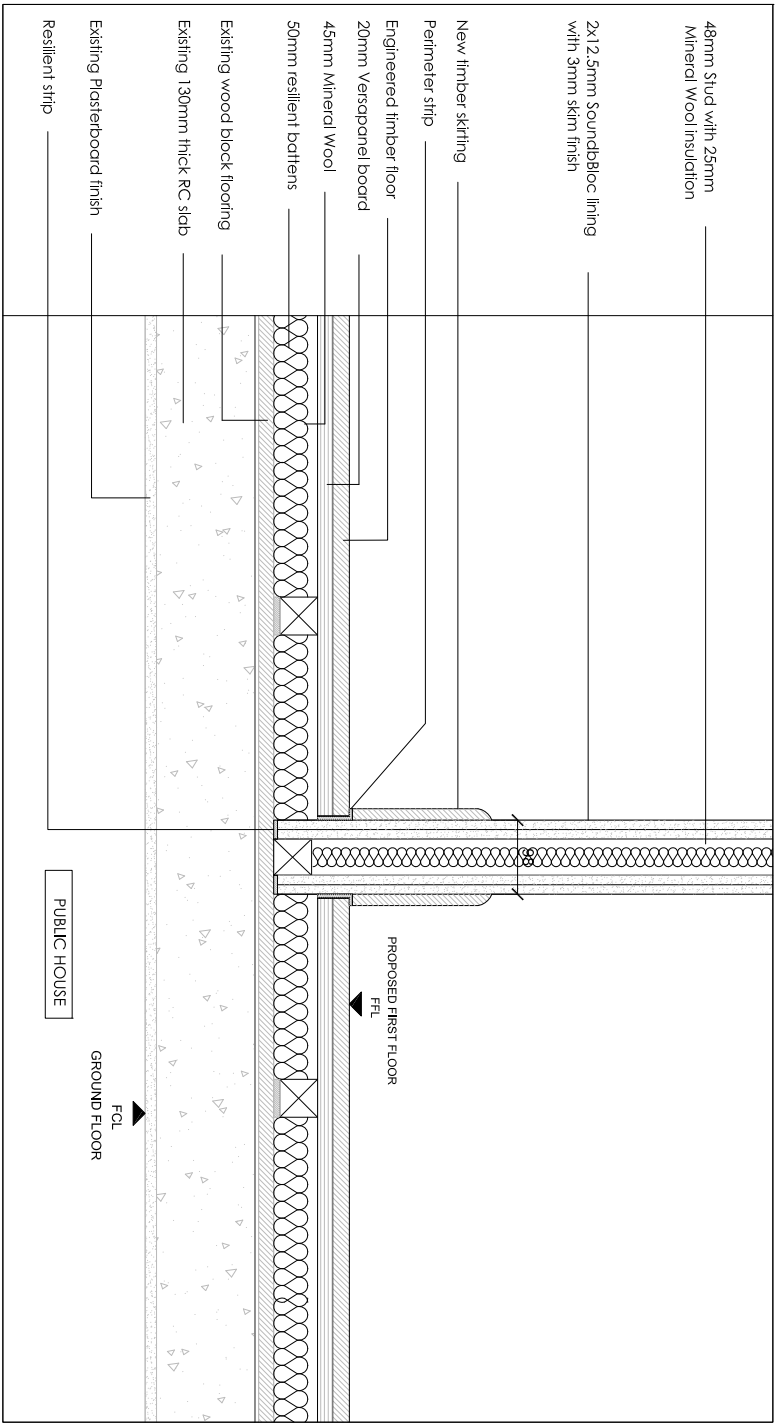
Project number: 1250 Drawing number: WD305

Status: DETAIL DESIGN Revision: A

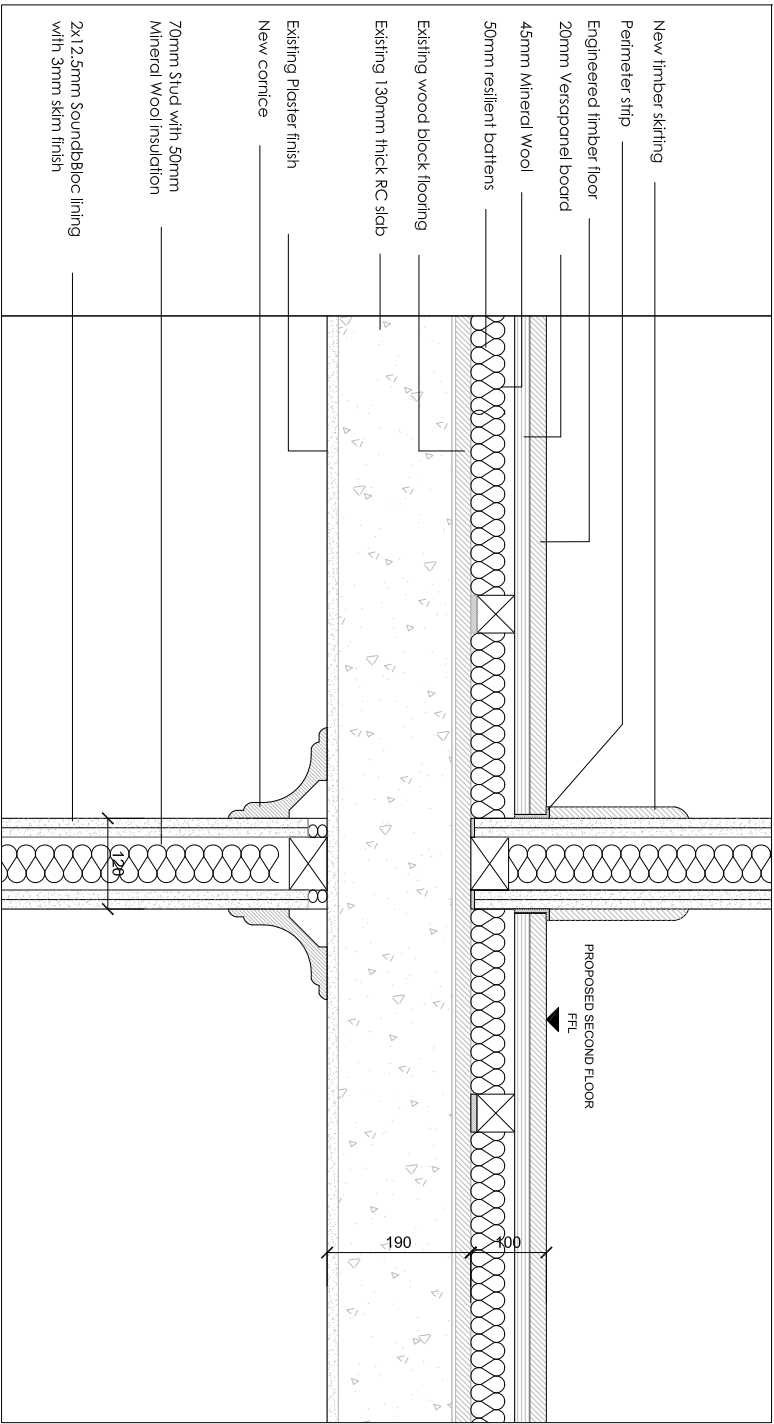
Dimensions based on topographical survey by EPC commercial surveys Ltd
All dimensions must be checked on site and not scaled from this drawing
© Mark Fairhurst Ltd.



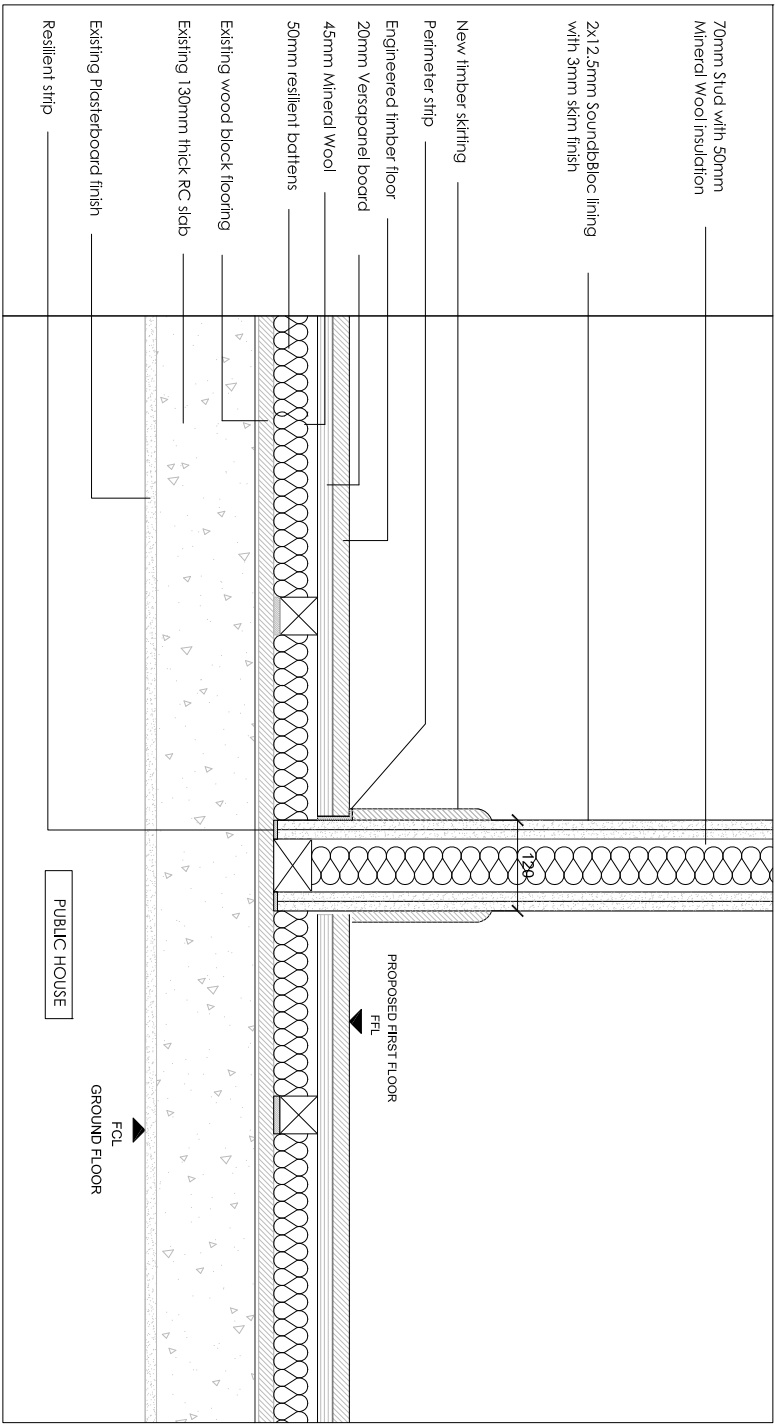
1 SECOND FLOOR PARTITIONS AND FLOOR, ACOUSTIC UPGRADE:
WD309 SCALE 1 : 10@A1



2 FIRST FLOOR PARTITIONS AND FLOOR, ACOUSTIC UPGRADE:
WD309 SCALE 1 : 10@A1



3 SECOND FLOOR PARTITIONS AND FLOOR, ACOUSTIC UPGRADE:
WD309 SCALE 1 : 10@A1



4 FIRST FLOOR PARTITIONS AND FLOOR, ACOUSTIC UPGRADE:
WD309 SCALE 1 : 10@A1

Revision	Date	Reason	Initial
----------	------	--------	---------

/	07.06.16	DETAIL DESIGN	GM
A	14.06.16	DETAIL DESIGN	GM

Notes

- FOLLOW MANUFACTURERS INSTRUCTIONS/RECOMMENDATIONS FOR ALL INSTALLATIONS
- REFER TO RELATIVE CONSULTANT'S REPORTS FOR FURTHER DETAILS WHEN APPLICABLE
- TO BE READ IN CONJUNCTION WITH ACOUSTIC REPORT
- TO BE READ IN CONJUNCTION WITH STRUCTURAL ENGINEER DRAWINGS
- TO BE READ IN CONJUNCTION WITH MECHANICAL ENGINEER DRAWINGS
- 1 HOUR FIRE RATING TO ALL STRUCTURAL ELEMENTS
- 1 HOUR FIRE RATING TO ALL INTERNAL PARTITIONS
- 30 MIN. FIRE RATING TO ALL INTERNAL PARTITIONS
- IF THE MATERIAL IS NOT PRESCRIBED, CONTRACTOR TO PROVIDE PROPOSALS AND SAMPLES FOR APPROVAL PRIOR TO ORDER
- CONTRACTOR TO COMPLY WITH OR BUILDING CONTROL REQUIREMENTS
- NEW PLASTERBOARD PARTITIONS TO BE BUILT AROUND EXISTING ARCHITRAVES, SKIRTINGS AND COVINGS
- REFER TO GAS'S WD11/2, 11/4 & 11/6 FOR DETAIL LOCATIONS

Dimensions based on topographical survey by EPC commercial surveys Ltd
All dimensions must be checked on site and not scaled from this drawing
© Mark Fairhurst Ltd.

mark fairhurst architects

48A, Union Street, London, SE1 1TD. T 020 7407 7070. E info@mark-fairhurst.co.uk

Project: Cock Tavern, 23 Phoenix Road, London NW1 1HB

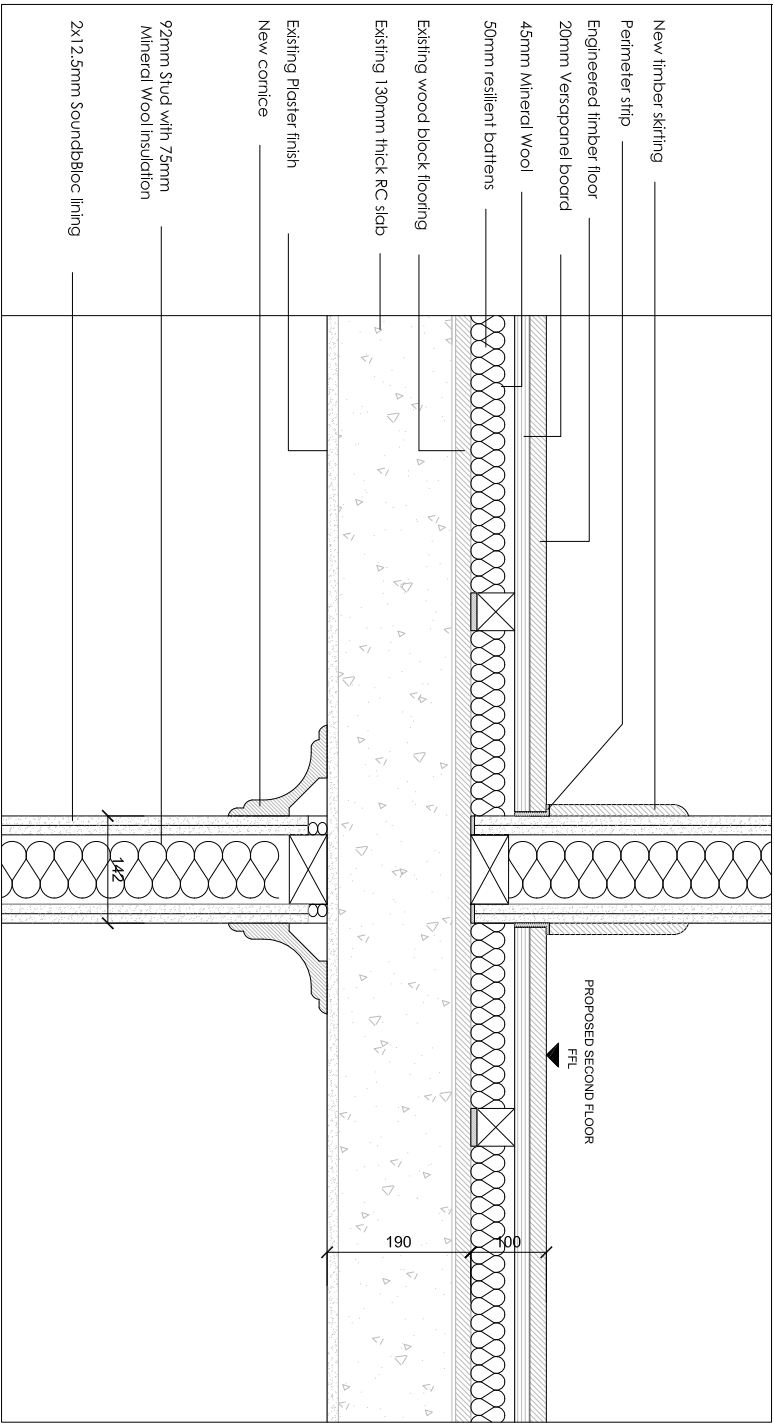
Client: Flameslike Ltd.

Drawing title: Proposed Plasterboard Partitions 1 of 2

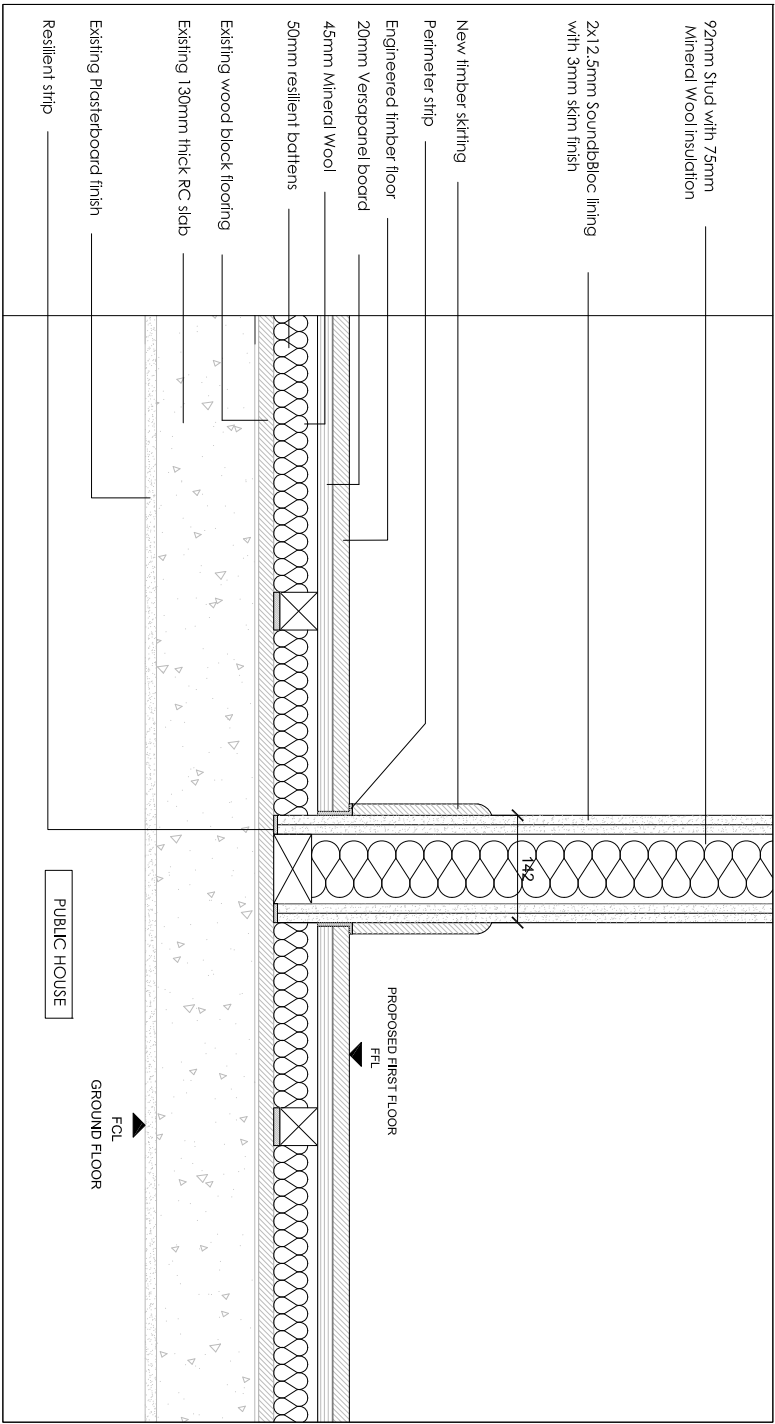
Scale: 1:20@A3, 1:10@A1 Date: Drawn by: GM

Project number: 1250 Drawing number: WD306

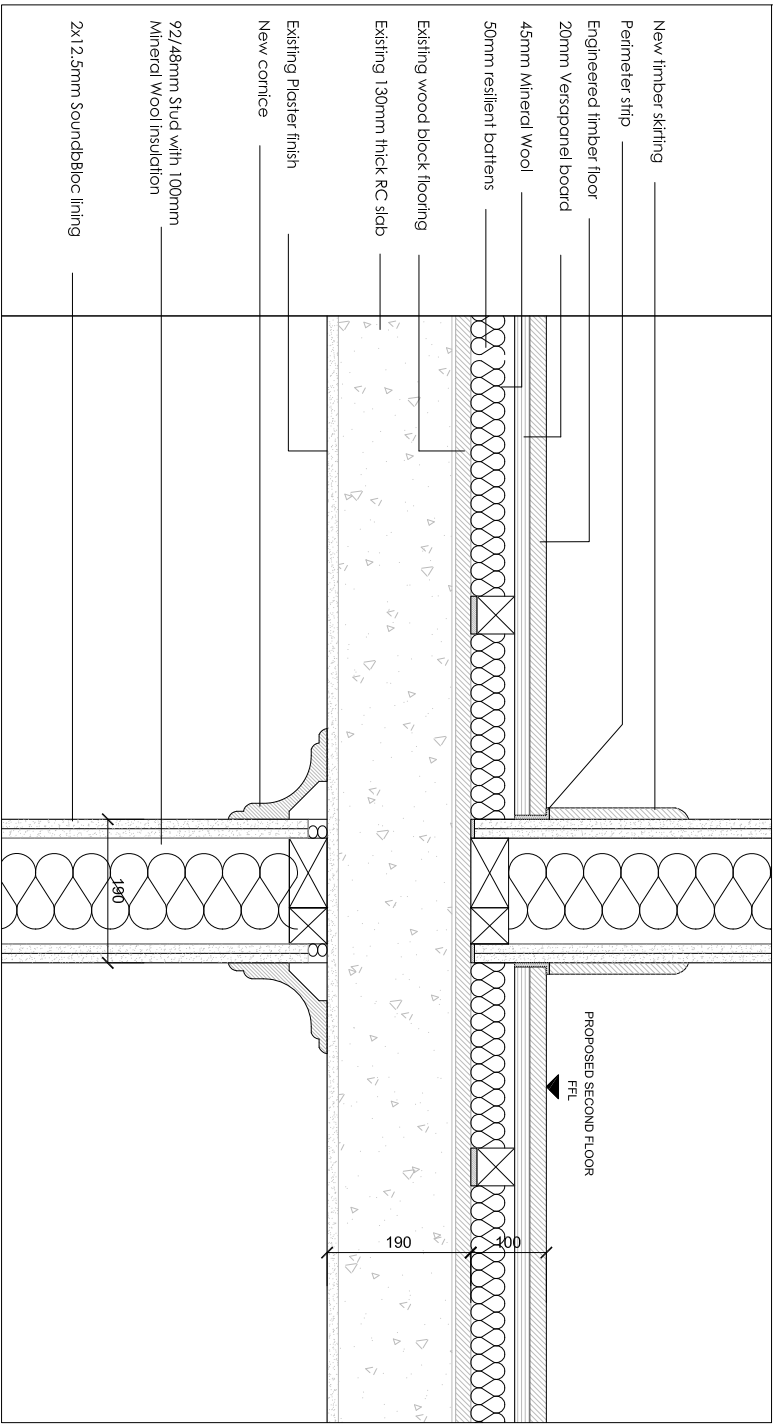
Status: DETAIL DESIGN Revision: A



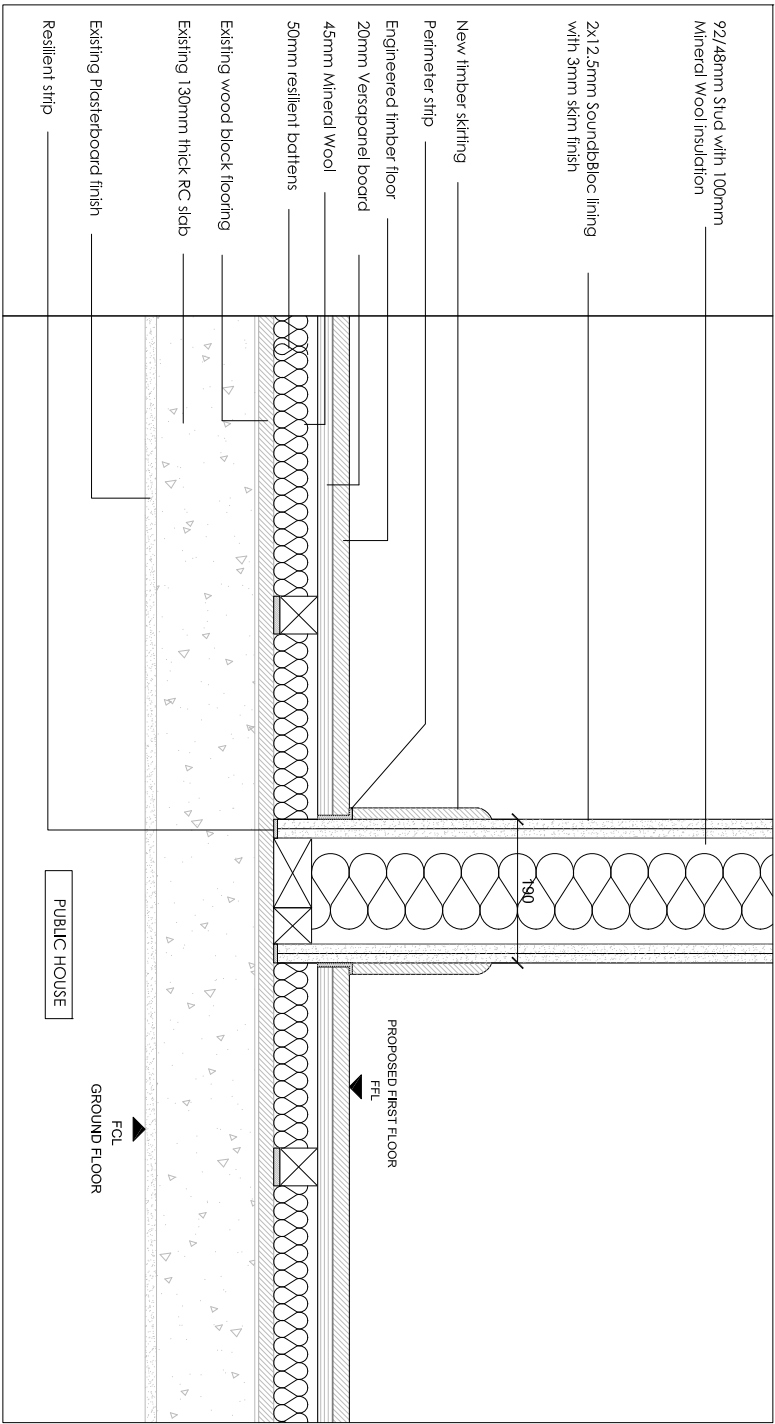
1 SECOND FLOOR PARTITIONS AND FLOOR, ACOUSTIC UPGRADE.
WD309 SCALE 1: 10@A1



2 FIRST FLOOR PARTITIONS AND FLOOR, ACOUSTIC UPGRADE.
WD309 SCALE 1: 10@A1



3 SECOND FLOOR PARTITIONS AND FLOOR, ACOUSTIC UPGRADE.
WD309 SCALE 1: 10@A1



4 FIRST FLOOR PARTITIONS AND FLOOR, ACOUSTIC UPGRADE.
WD309 SCALE 1: 10@A1

Revision	Date	Reason	Initial
----------	------	--------	---------

/	07.06.16	DETAIL DESIGN	GM
A	14.06.16	DETAIL DESIGN	GM

Notes

- FOLLOW MANUFACTURERS INSTRUCTIONS/RECOMMENDATIONS FOR ALL INSTALLATIONS
- REFER TO RELATIVE CONSULTANT'S REPORTS FOR FURTHER DETAILS WHEN APPLICABLE
- TO BE READ IN CONJUNCTION WITH ACOUSTIC REPORT
- TO BE READ IN CONJUNCTION WITH STRUCTURAL ENGINEER DRAWINGS
- TO BE READ IN CONJUNCTION WITH MECHANICAL ENGINEER DRAWINGS
- 1 HOUR FIRE RATING TO ALL STRUCTURAL ELEMENTS
- 1 HOUR FIRE RATING TO ALL INTERNAL PARTITIONS
- 30 MIN. FIRE RATING TO ALL INTERNAL PARTITIONS
- IF THE MATERIAL IS NOT PRESCRIBED, CONTRACTOR TO PROVIDE PROPOSALS AND SAMPLES FOR APPROVAL PRIOR TO ORDER
- CONTRACTOR TO COMPLY WITH OR BUILD AROUND EXISTING ARCHITRAVES, SKIRTINGS AND CORNICES
- NEW PLASTERBOARD PARTITIONS TO BE BUILT AROUND EXISTING ARCHITRAVES, SKIRTINGS AND CORNICES
- REFER TO GAS WD112, 114 & 116 FOR DETAIL LOCATIONS

mark fairhurst architects

48A, Union Street, London, SE1 1TD, T 020 7407 7070, E info@mark-fairhurst.co.uk

Project: Cock Tavern, 23 Phoenix Road, London NW1 1HB

Client: Flamesrike Ltd.

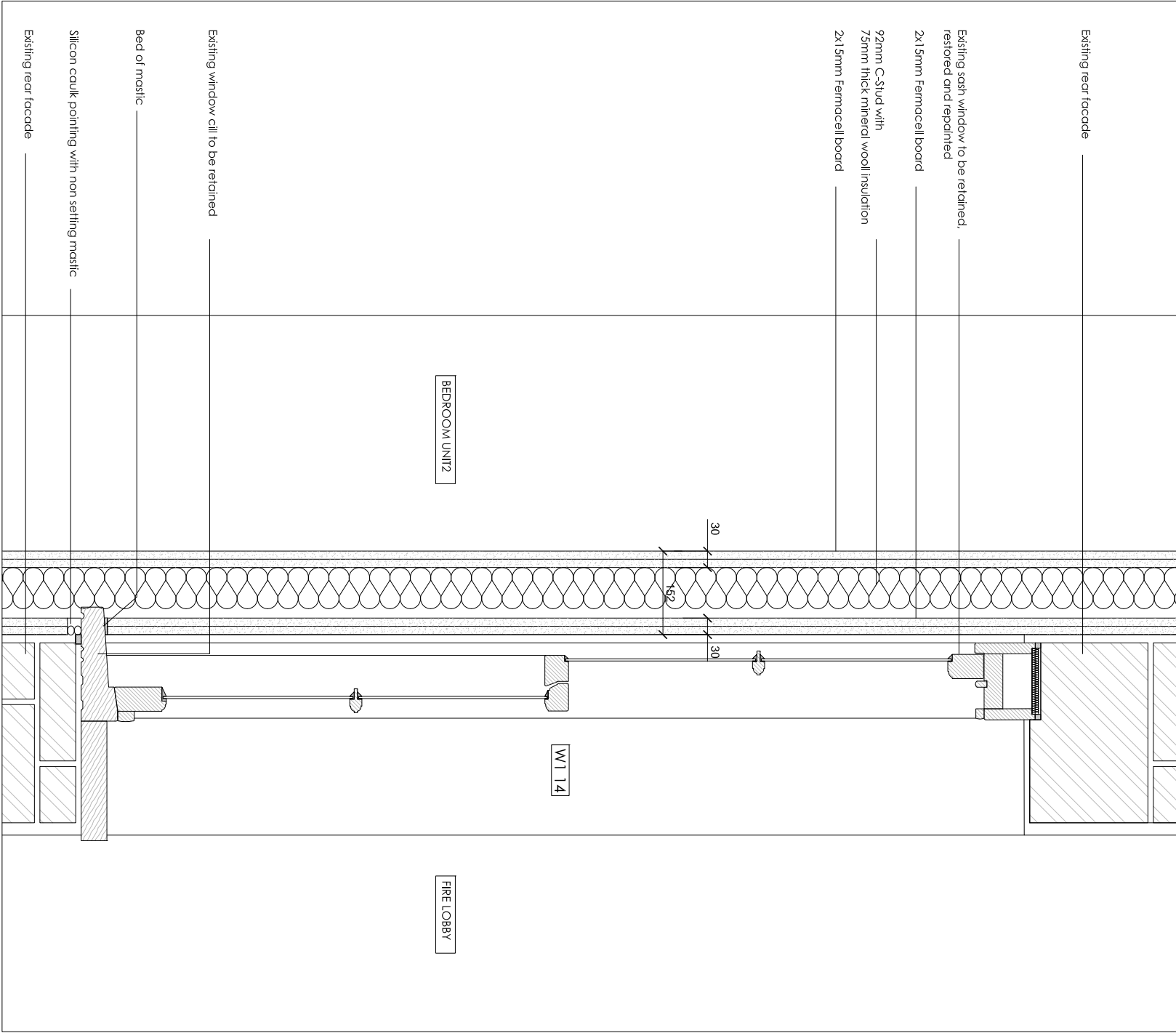
Drawing title: Proposed Plasterboard Partition Details 2 of 2

Scale: 1:20@A3, 1:10@A1 Date: Drawn by: GM

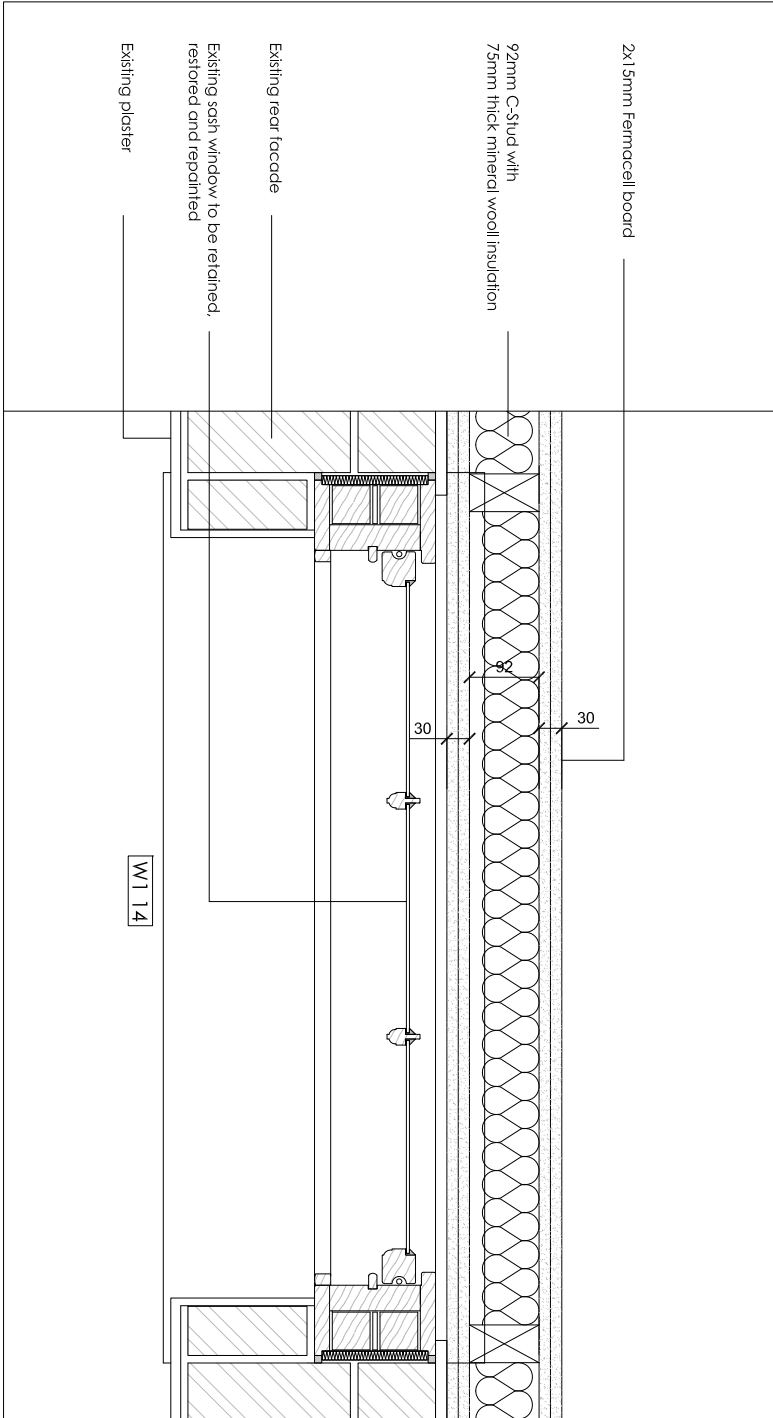
Project number: 1250 Drawing number: WD307

Status: DETAIL DESIGN Revision: A

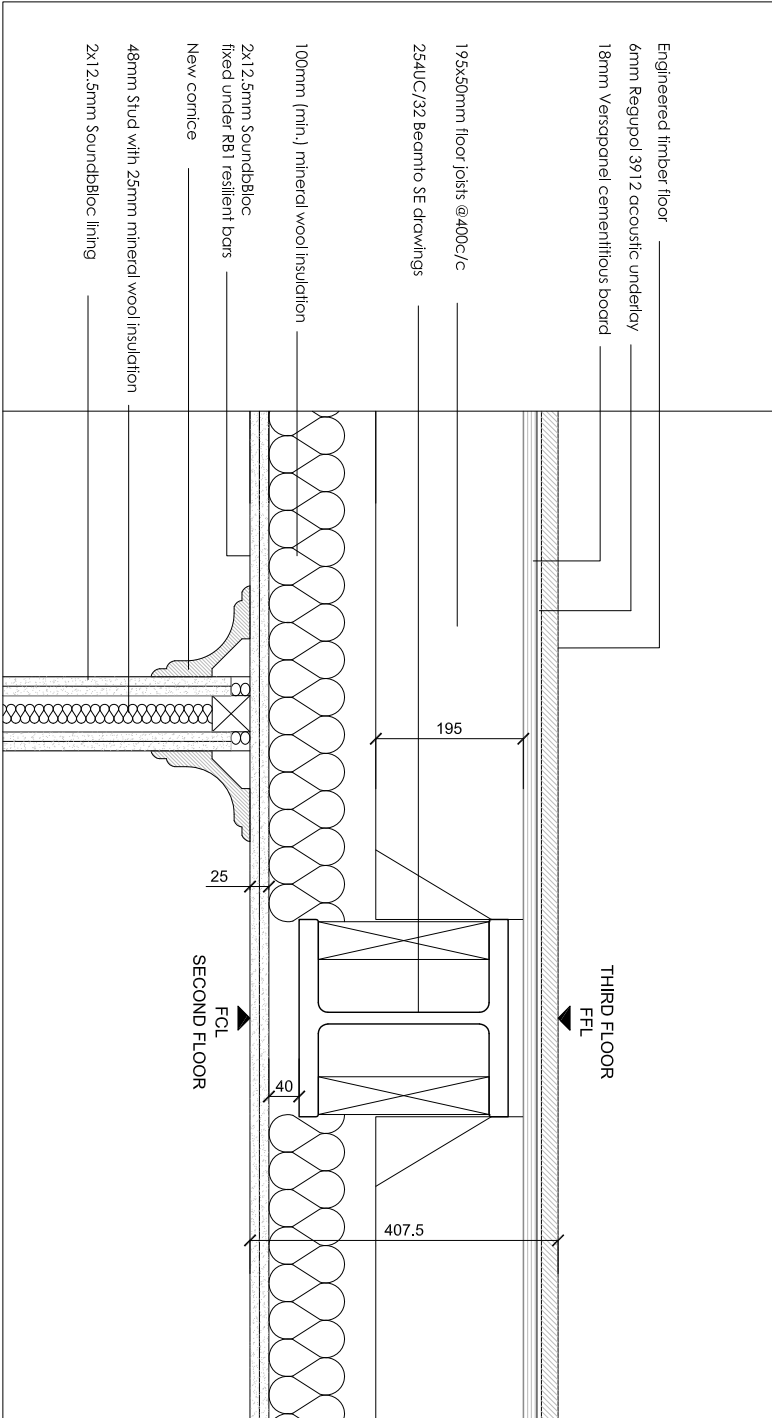
Dimensions based on topographical survey by EPC commercial surveys Ltd
All dimensions must be checked on site and not scaled from this drawing
© Mark Fairhurst Ltd.



1 FIRST FLOOR FUNCTION ROOM WINDOW TO UNIT 2 BEDROOM HEAD AND CILL DETAIL
WD309 SCALE 1:10@A1



2 FIRST FLOOR FUNCTION ROOM WINDOW TO UNIT 2 BEDROOM JAMB DETAIL
WD309



3 THIRD FLOOR ACOUSTIC BUILD UP
WD309 SCALE 1:10@A1

Revision	Date	Reason	Initial	Notes
----------	------	--------	---------	-------

/	07.06.16	DETAIL DESIGN	GM	
A	14.06.16	DETAIL DESIGN	GM	

Dimensions based on topographical survey by EPC commercial surveys Ltd
All dimensions must be checked on site and not scaled from this drawing
© Mark Fairhurst Ltd.

mark fairhurst architects

48A Union Street, London, SE1 1TD. T 020 7407 7070. E info@mark-fairhurst.co.uk

Project: Cock Tavern, 23 Phoenix Road, London NW1 1HB

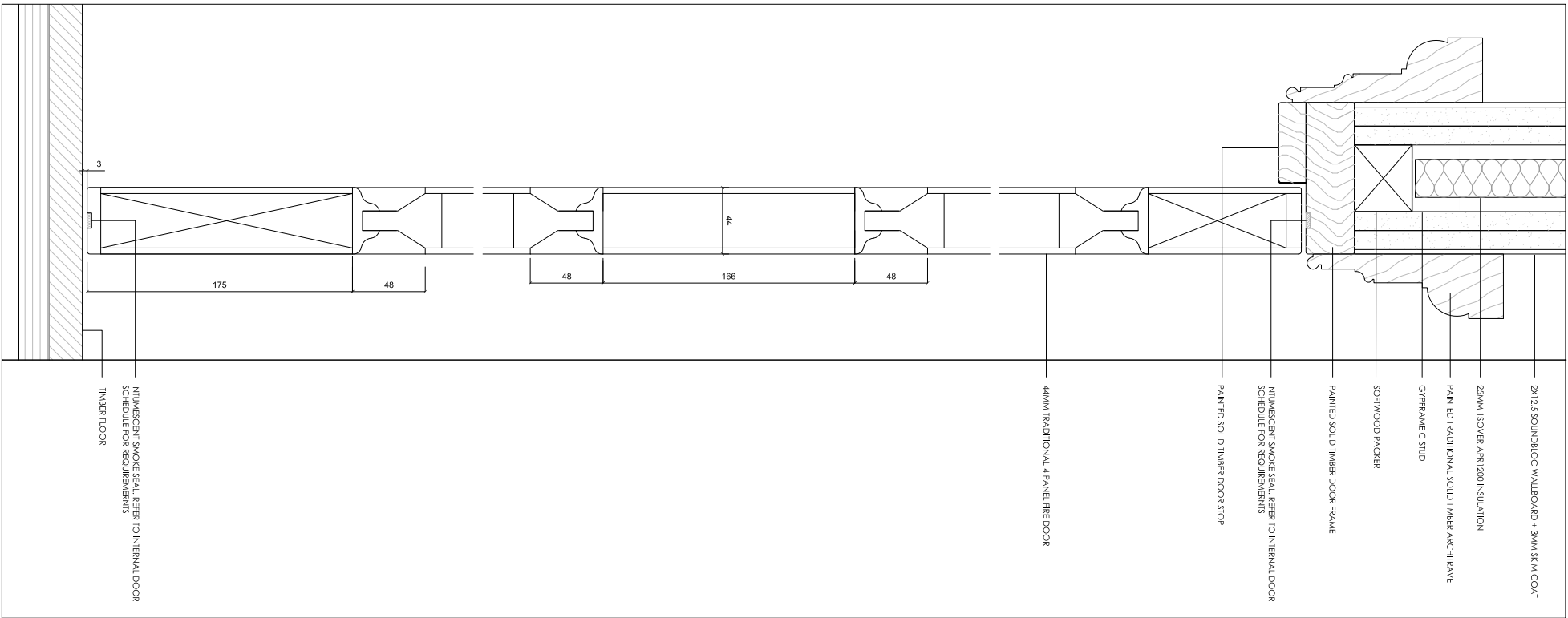
Client: Flameslike Ltd.

Drawing title: Window Ref:W1 14 Detail: Third Floor Build-up Detail

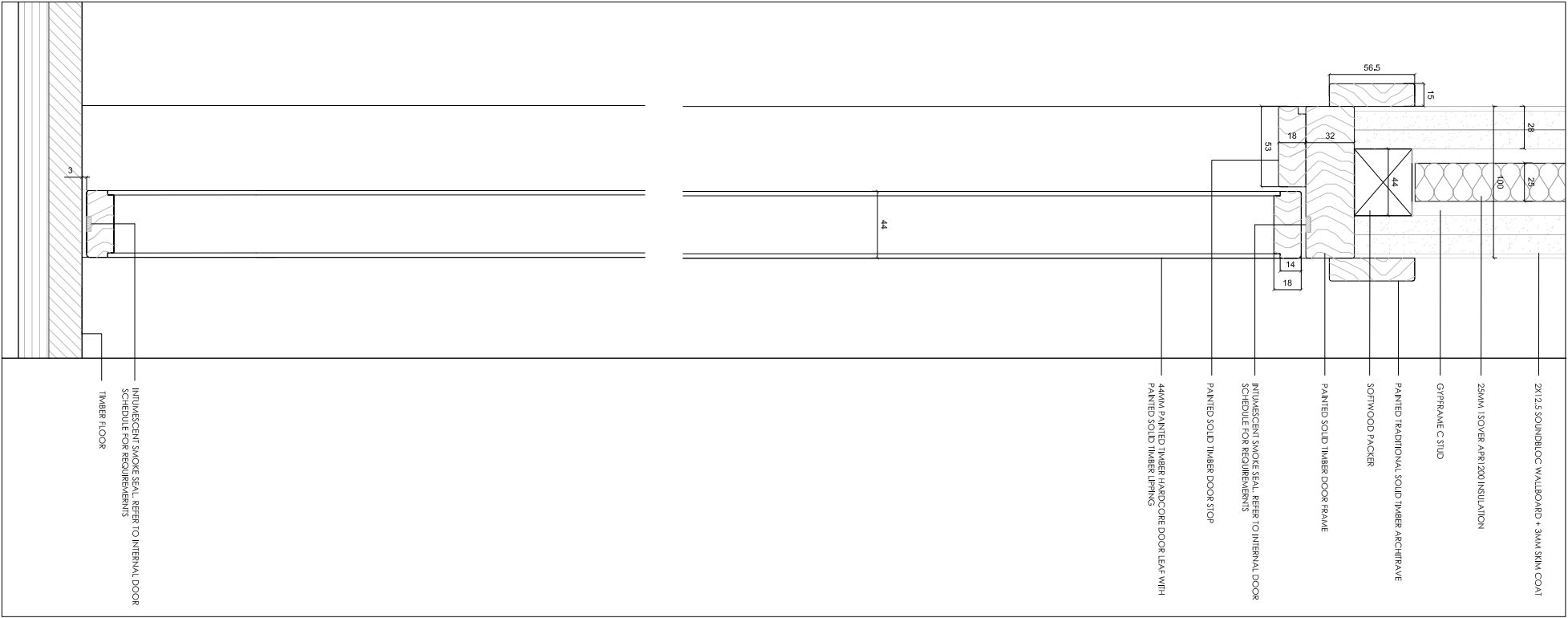
Scale: 1:20@A3, 1:10@A1 Date: Drawn by: GM

Project number: 1250 Drawing number: WD308

Status: DETAIL DESIGN Revision: A



379 Traditional 4 Panel Internal Door FD30 - Typical Head and Cill Detail
SCALE 1: 2@A1



379 Flush Internal Door - Typical Head and Cill Detail
SCALE 1: 2@A1

- Notes
- FOLLOW MANUFACTURERS INSTRUCTIONS/RECOMMENDATIONS FOR ALL INSTALLATIONS
 - REFER TO RELATIVE CONSULTANTS REPORTS FOR FURTHER DETAILS WHEN APPLICABLE
 - TO BE READ IN CONJUNCTION WITH ACOUSTIC REPORT
 - TO BE READ IN CONJUNCTION WITH STRUCTURAL ENGINEER DRAWINGS
 - TO BE READ IN CONJUNCTION WITH MECHANICAL ENGINEER DRAWINGS
 - 1 HOUR FIRE RATING TO ALL STRUCTURAL ELEMENTS.
 - 1 HOUR FIRE RATING TO ALL INTERNAL PARTITIONS BETWEEN UNITS
 - 30 MIN. FIRE RATING TO ALL INTERNAL PARTITIONS
 - IF THE MATERIAL IS NOT PRESCRIBED, CONTRACTOR TO PROVIDE PROPOSALS AND SAMPLES FOR APPROVAL PRIOR TO ORDER
 - CONTRACTOR TO COMPLY WITH OR BUILDING CONTROL REQUIREMENTS
 - NEW PLASTERBOARD PARTITIONS TO BE BUILT AROUND EXISTING ARCHITRAVES, SKIRTINGS AND COVINGS

Revision	Date	Reason	Initial
/	07.06.16	DETAIL DESIGN	GM

Dimensions based on topological survey by EPC commercial surveys Ltd
All dimensions must be checked on site and not scaled from this drawing
© Mark Fairhurst Ltd.

mark fairhurst ARCHITECTS

48A, Union Street, London, SE1 1TD, T 020 7407 7070, E info@mark-fairhurst.co.uk
Project: Cock Tavern, 23 Phoenix Road, London NW1 1HB
Client: Flamesitke Ltd.

Drawing title:	Joinery Details - Internal Door General Arrangements
Scale: 1:20@A1	Date: 07.06.16 Drawn by: GM
Project number: 1250	Drawing number: WD372
Status: DETAIL DESIGN	Revision: /