

Notes

- Existing elements retained
- Existing elements to be removed from previous application
- Existing elements to be removed or altered from this application

Refer to window condition survey for further detail

LEGEND

1. PLAIN TERRACOTTA INTERLOCKING ROOF TILE
2. PAINTED RENDER
3. PAINTED TIMBER SASH WINDOW
4. PAINTED TIMBER WINDOW
5. CONCRETE COPING
6. STONE COPING
7. TERRACOTTA CHIMNEY POT
8. PUB ENTRANCE
9. RESIDENTIAL ENTRANCE
10. PAINTED TIMBER FASCIA
11. PAINTED PLASTIC RAIN PIPE WITH PAINTED CAST IRON HOPPER
12. WALKER HOUSE PROFILE

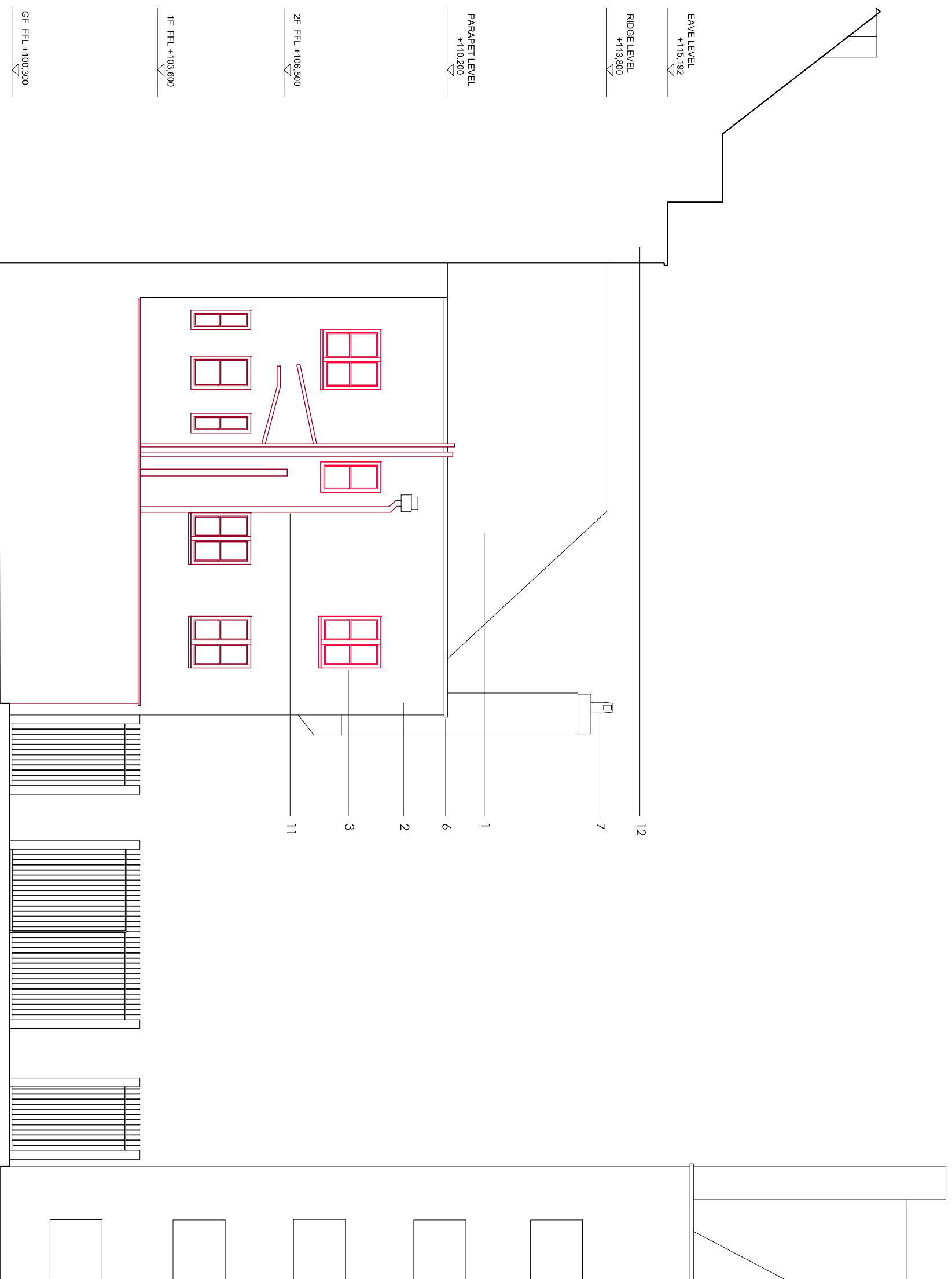
Revision	Date	Reason	Initial
E	04.05.16	Amendments for Listed Building Application	DM

Dimensions based on topological survey by EPC commercial surveys Ltd  
 All dimensions must be checked on site and not scaled from this drawing  
 © Mark Fairhurst Ltd.

**mark fairhurst ARCHITECTS**

48A Union Street, London, SE1 1TD, T:020 7407 7070, E:info@mark-fairhurst.co.uk  
 Project: Cock Tavern, 23 Phoenix Road, London NW1 1HB  
 Client: Flamesrike Ltd.

Drawing title: Existing North East Elevation  
 Scale: 1:100@A3, 1:50@A1 Date: 04.05.16 Drawn by: DM  
 Project number: 1250 Drawing number: PL 110  
 Status: PLANNING Revision: E



BF FFL +97.857

GF FFL +100.300

1F FFL +103.600

2F FFL +106.500

PARAPET LEVEL  
+110.200

RIDGE LEVEL  
+113.800

EAVE LEVEL  
+115.192

