

NOTES:

- DIMENSIONS:** Figured dimensions are to be taken in preference to scaled dimensions. All dimensions are to be verified on site prior to work commencing.
- DISCREPANCIES:** Any discrepancy is to be referred to the consultant before proceeding.
- COPYRIGHT © 2016:** Copyright in this drawing is the property of Michael Jones & Associates LLP and must not be reproduced nor amended nor used for the execution of any works whether in connection with the proposed works for which it is prepared or otherwise without the express consent of Michael Jones & Associates LLP. All rights reserved.
- RELATED DOCUMENTS:** This drawing shall be read in conjunction with the relevant written Specification of Works, accompanying Drawings, Room Data Sheets, Equipment Schedules and all other relevant documents connected to those works shown on this drawing.

KEY PLAN:

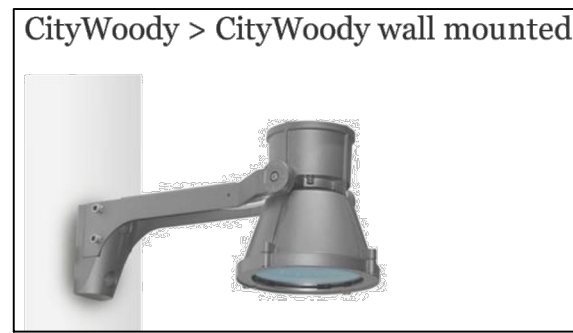
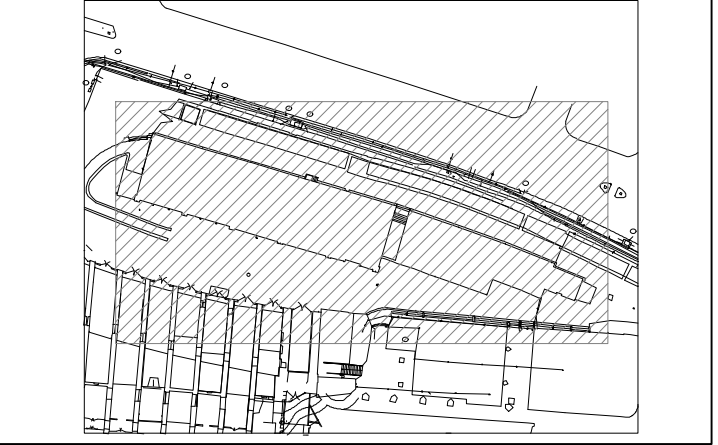


FIG 1 - HIGH LEVEL IGUZZUNI LUMINAIRE



FIG 2 - CCTV DOME CAMERA  
AXIS P3225 LIVE NETWORK CAMERA

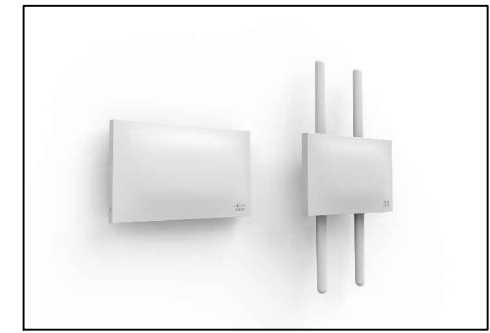


FIG 3 - IP RATED WIFI ACCESS POINT  
CISCO MERAKI MR72



FIG 4 - 2 X 10W IP65 TWINSPOT  
EMERGENCY LUMINAIRE



FIG 5 - STOPCOCK AND WATER METER COVER



FIG 9 - TYPICAL SOIL PIPEWORK 2 SCREW BRACKET,  
DRILLED AND SCREWED INTO BRICKWORK MORTAR  
COURSE.

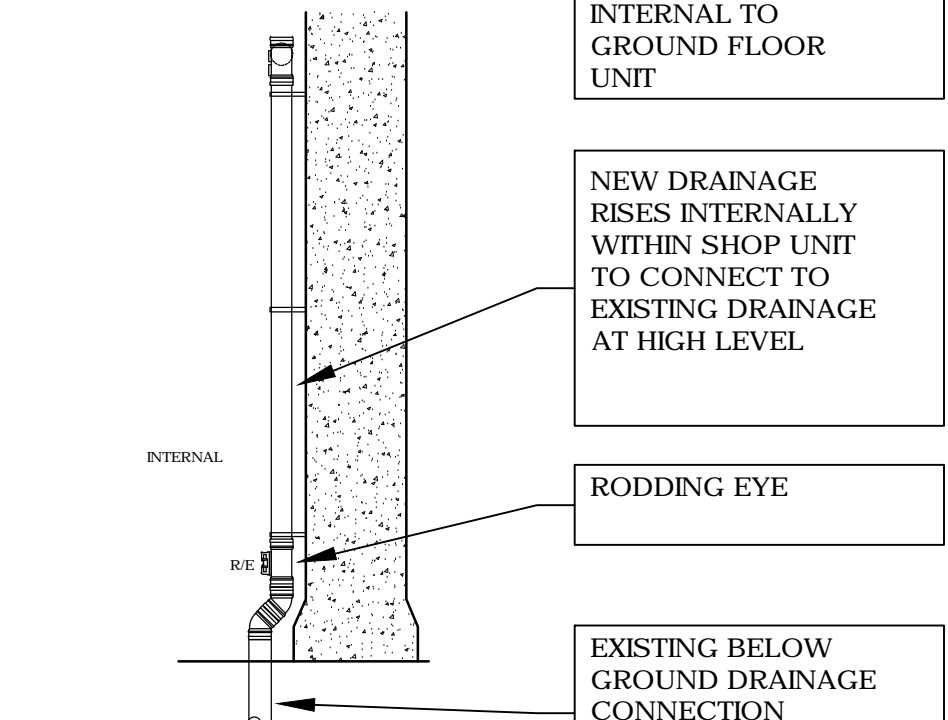


FIG 6 - ABOVE GROUND DRAINAGE ALTERATIONS  
TYPICAL DETAIL - N.T.S



FIG 8 - TYPICAL DETAIL NEW  
DRAINAGE WITHIN GROUND  
FLOOR SHOP UNIT

CABLE TRAY + BASKET RUN INTERNALLY FOR EXTERNAL LIGHTING AND WIFI @ H/L WITHIN THE GROUND FLOOR SHOP UNITS

NEW LED LANTERN LUMINAIRES - SEE FIG 1

NEW IP67 WIFI ACCESS POINT - SEE FIG 3

TWINSPOT LED EMERGENCY LUMINAIRE - SEE FIG 4

EXISTING FLOODLIGHTS REMOVED

NEW DRAINAGE CONNECTION 25mmØ MDPE MCWS AND 50mmØ TELECOMS DUCT TO EACH UNIT

NEW ISOLATOR VALVE AND CHECK METERED MCWS SERVICE BELOW GROUND TO UNIT.

NEW BELOW GROUND 50mmØ TELECOMS DUCT TO UNIT

NEW BELOW GROUND FOUL DRAINAGE TO UNIT. ACTUAL ROUTING AND POSITIONING OF INCOMING SERVICES TO MINIMISE DISRUPTION TO EXISTING BUILDING STRUCTURE. FINAL POSITIONS SUBJECT TO FURTHER ON SITE INVESTIGATION.

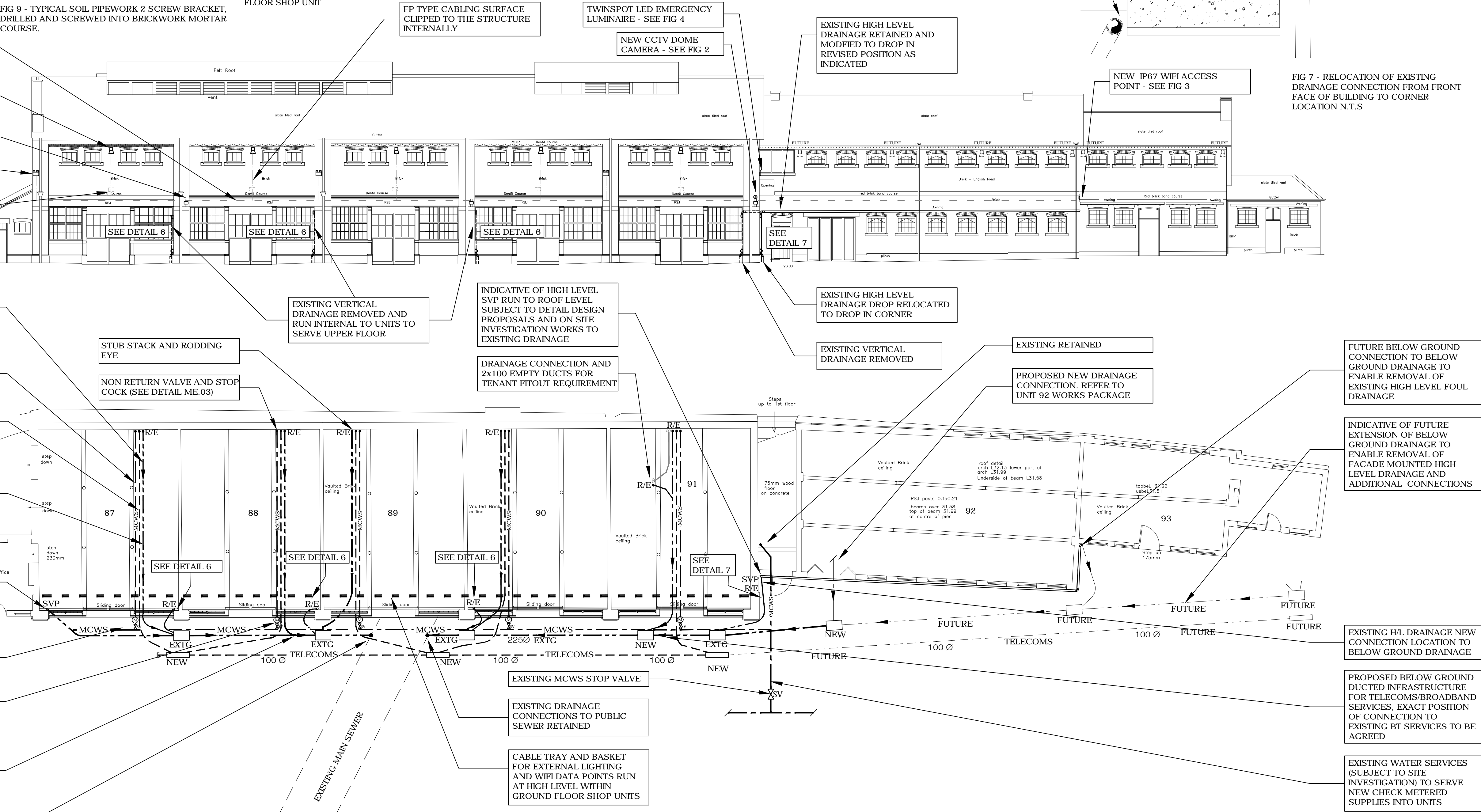
INDICATIVE OF HIGH LEVEL SVP RUN TO ROOF LEVEL SUBJECT TO DETAIL DESIGN PROPOSALS AND ON SITE INVESTIGATION WORKS TO EXISTING DRAINAGE

EXISTING WATER MAIN (SIZE UNKNOWN)

NEW CHECK METER AND ISOLATING VALVE IN PIT - SEE FIG 5

INDICATIVE PROPOSED BELOW GROUND DRAINAGE CONNECTIONS SUBJECT TO DETAIL DESIGN AND FURTHER ON SITE INVESTIGATION

EXISTING DRAINAGE CONNECTIONS TO PUBLIC SEWER RETAINED



NEW SVP DRAINAGE CONNECTING TO DROPPING TO NEW BELOW GROUND DRAINAGE CONNECTION INTERNAL TO GROUND FLOOR SHOP UNIT.

EXISTING EXTERNAL SVP REMOVED

EXISTING BELOW GROUND DRAINAGE MODIFIED/EXTENDED TO SERVE NEW CONNECTION INTERNAL TO GROUND FLOOR UNIT

NEW DRAINAGE RISES INTERNALLY WITHIN SHOP UNIT TO CONNECT TO EXISTING DRAINAGE AT HIGH LEVEL

RODDING EYE

EXISTING BELOW GROUND DRAINAGE CONNECTION EXTENDED TO NEW POSITION INTERNALLY

FP TYPE CABLING SURFACE CLIPPED TO THE STRUCTURE INTERNALLY

TWINSPOT LED EMERGENCY LUMINAIRE - SEE FIG 4

NEW CCTV DOME CAMERA - SEE FIG 2

EXISTING HIGH LEVEL DRAINAGE RETAINED AND MODIFIED TO DROP IN REVISED POSITION AS INDICATED

NEW IP67 WIFI ACCESS POINT - SEE FIG 3

FIG 7 - RELOCATION OF EXISTING DRAINAGE CONNECTION FROM FRONT FACE OF BUILDING TO CORNER LOCATION N.T.S

EXISTING VERTICAL DRAINAGE REMOVED AND RUN INTERNAL TO UNITS TO SERVE UPPER FLOOR

INDICATIVE OF HIGH LEVEL SVP RUN TO ROOF LEVEL SUBJECT TO DETAIL DESIGN PROPOSALS AND ON SITE INVESTIGATION WORKS TO EXISTING DRAINAGE

DRAINAGE CONNECTION AND 2x100 EMPTY DUCTS FOR TENANT FITOUT REQUIREMENT

EXISTING HIGH LEVEL DRAINAGE DROP RELOCATED TO DROP IN CORNER

EXISTING VERTICAL DRAINAGE REMOVED

EXISTING RETAINED

PROPOSED NEW DRAINAGE CONNECTION. REFER TO UNIT 92 WORKS PACKAGE

FUTURE BELOW GROUND CONNECTION TO BELOW GROUND DRAINAGE TO ENABLE REMOVAL OF EXISTING HIGH LEVEL FOUL DRAINAGE

INDICATIVE OF FUTURE EXTENSION OF BELOW GROUND DRAINAGE TO ENABLE REMOVAL OF FACADE MOUNTED HIGH LEVEL DRAINAGE AND ADDITIONAL CONNECTIONS

EXISTING H/L DRAINAGE NEW CONNECTION LOCATION TO BELOW GROUND DRAINAGE

PROPOSED BELOW GROUND DUCTED INFRASTRUCTURE FOR TELECOMS/BROADBAND SERVICES. EXACT POSITION OF CONNECTION TO EXISTING BT SERVICES TO BE AGREED

EXISTING WATER SERVICES (SUBJECT TO SITE INVESTIGATION) TO SERVE NEW CHECK METERED SUPPLIES INTO UNITS

PLANNING ISSUE

D	27th June 2016	Planning Issue
C	27th June 2016	Preliminary Issue
B	22th June 2016	Preliminary Issue
A	20th June 2016	Preliminary Issue
-	14th June 2016	Preliminary Issue
No:	Date:	Amendment:
Revision:		

**Michael Jones & Associates LLP**  
ENGINEERING CONSULTANTS

Crossway House  
8 London Road, Reigate, Surrey, RH2 9HY.  
Tel: +44(0)1737 245610 Fax: +44(0)1737 241142  
e-mail: info@mjasociates.co.uk

Scale: 1:150@A1 Date: June 2016 Drawn: PM Chkd: MJA

Client: Stanley Sidings

Project: Stables Market Camden

Title: Old Horse Hospital Proposed Services